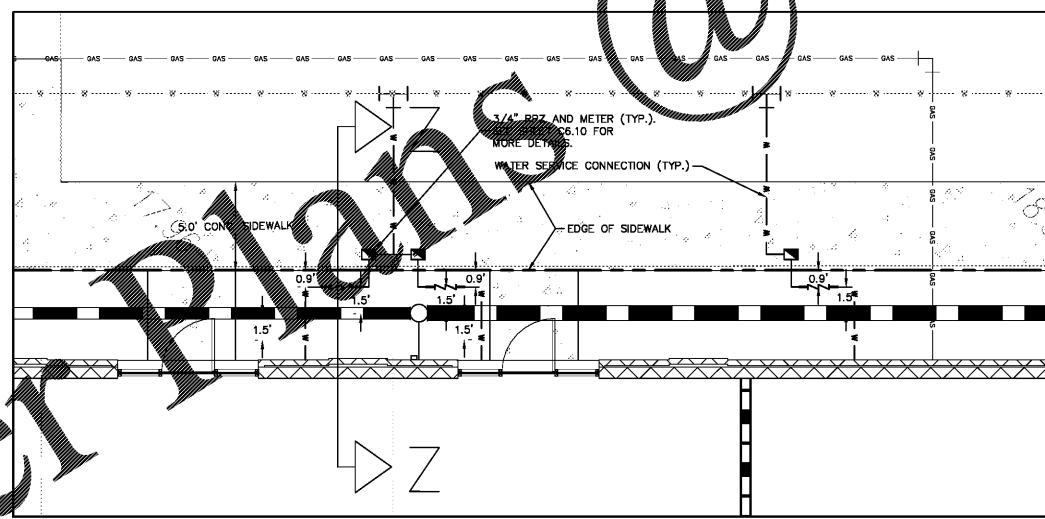
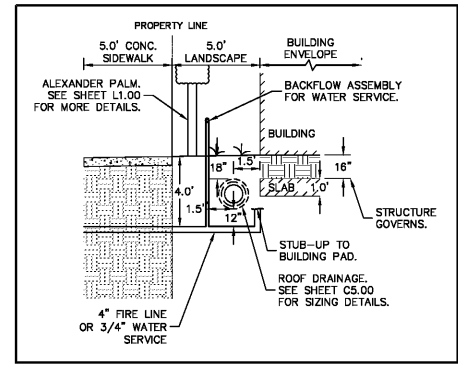


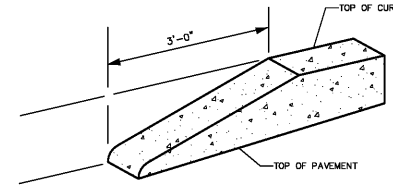
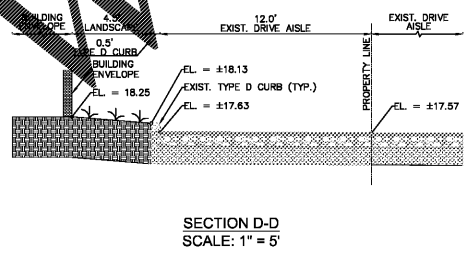
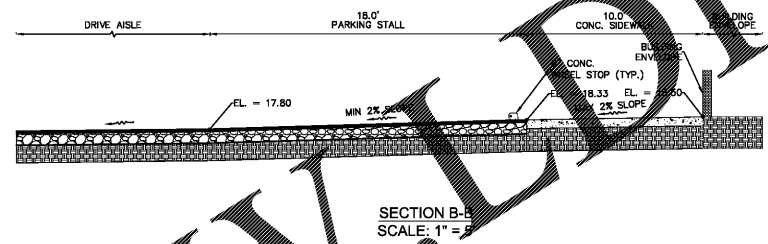
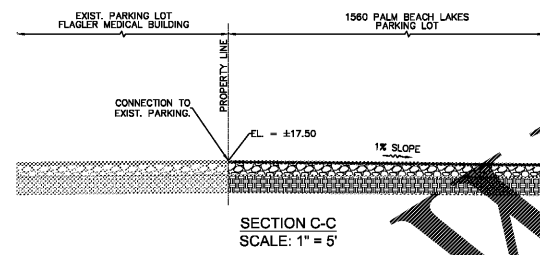
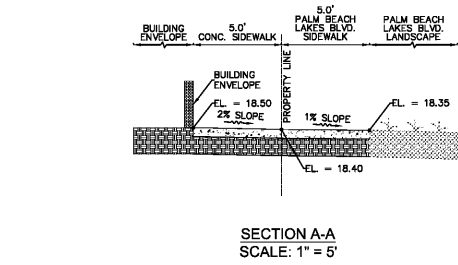
Order Plans @ WWW.KimleyHorn.com
 Title: 1560 Palm Beach Lakes Paving, Grading, and Drainage Details - August 03, 2017 04:52:45pm
 K:\BDC\Civil\40336000 - 1560 Palm Beach Lakes\CADD\PlanSheets\C5.11 PAVING, GRADING, AND DRAINAGE DETAILS.CAD
 This document, including the concepts and designs presented herein, is the property of Kimley-Horn and Associates, Inc. and is to be used only for the specific purpose and client for which it was prepared. Release of and improper reliance on this document without written authorization and adaptation by Kimley-Horn and Associates, Inc. shall be without liability to Kimley-Horn and Associates, Inc.



TYPICAL UTILITY/ ROOF DRAINAGE LAYOUT
SCALE: 1" = 5'



NOTE:
 1. DEPTH OF ROOF DRAINAGE WILL VARY BY LOCATION. CONTRACTOR TO MAINTAIN 18" OF COVER FOR ALL PIPES.
 2. WATER LINE TO MAINTAIN 4' DEPTH AND AT LEAST 6" OF CLEARANCE BELOW ROOF DRAINAGE.



ALL CURBS TO HAVE STANDARD 3' TRANSITION FROM 6" HEIGHT TO FLUSH (0" HEIGHT). A STANDARD TEMPLATE SHALL BE USED AT ALL LOCATIONS TO PROVIDE UNIFORM CURB TRANSITION THROUGHOUT THE PROJECT.

No.	REVISIONS	DATE	BY

Kimley»Horn
 © 2017 KIMLEY-HORN AND ASSOCIATES, INC. 33445
 1615 S CONGRESS AVE. SUITE 201, DELRAY BEACH, FL
 PHONE: 301-330-2345 FAX: 301-863-8175
 WWW.KIMLEY-HORN.COM CA 0000696

LICENSED PROFESSIONAL
 MICHAEL D. SPRUCE, P.E.
 FL LICENSE NUMBER 52776
 DATE: ---

K-HA PROJECT 140336000
 DATE AUGUST 2017
 SCALE AS SHOWN
 DESIGNED BY MDM
 DRAWN BY JRB
 CHECKED BY MDS

PAVING, GRADING, AND DRAINAGE
 AND DRAINAGE
 DETAILS AND
 CROSS SECTIONS
 1560 PALM BEACH LAKES
 PREPARED FOR
 TRICOR INTERNATIONAL CORP.
 WEST PALM BEACH FL

SHEET NUMBER
C5.11