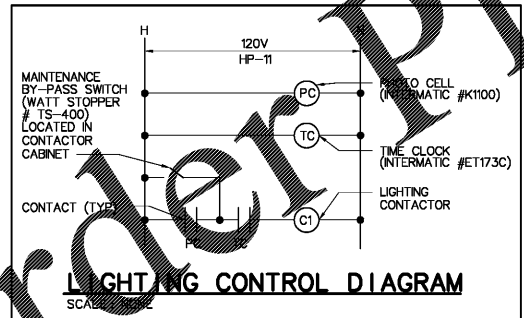
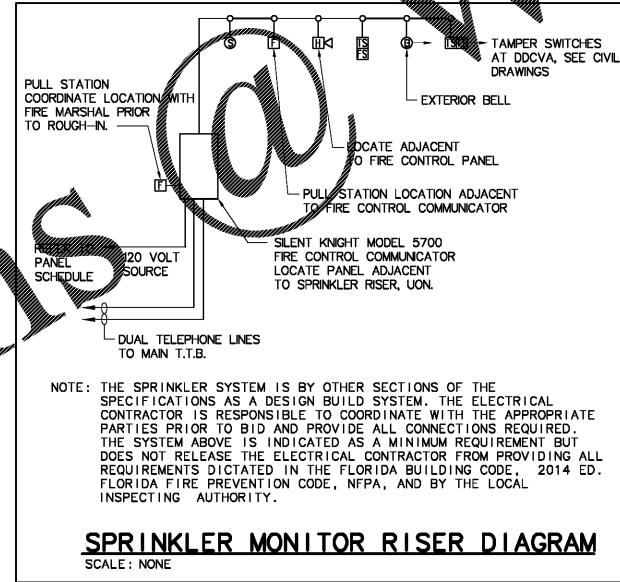
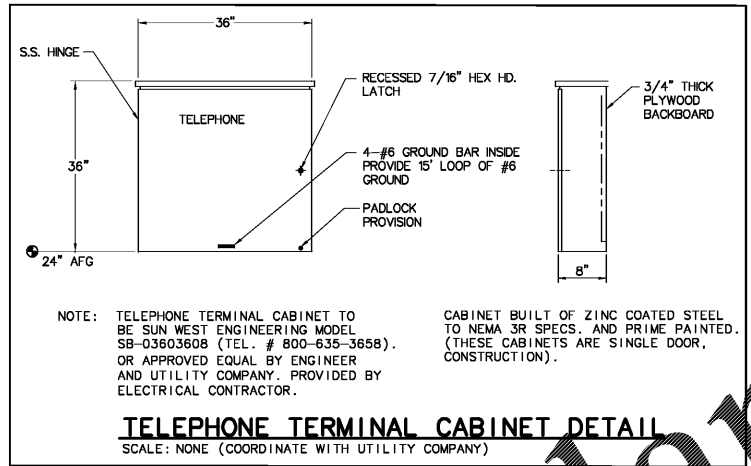
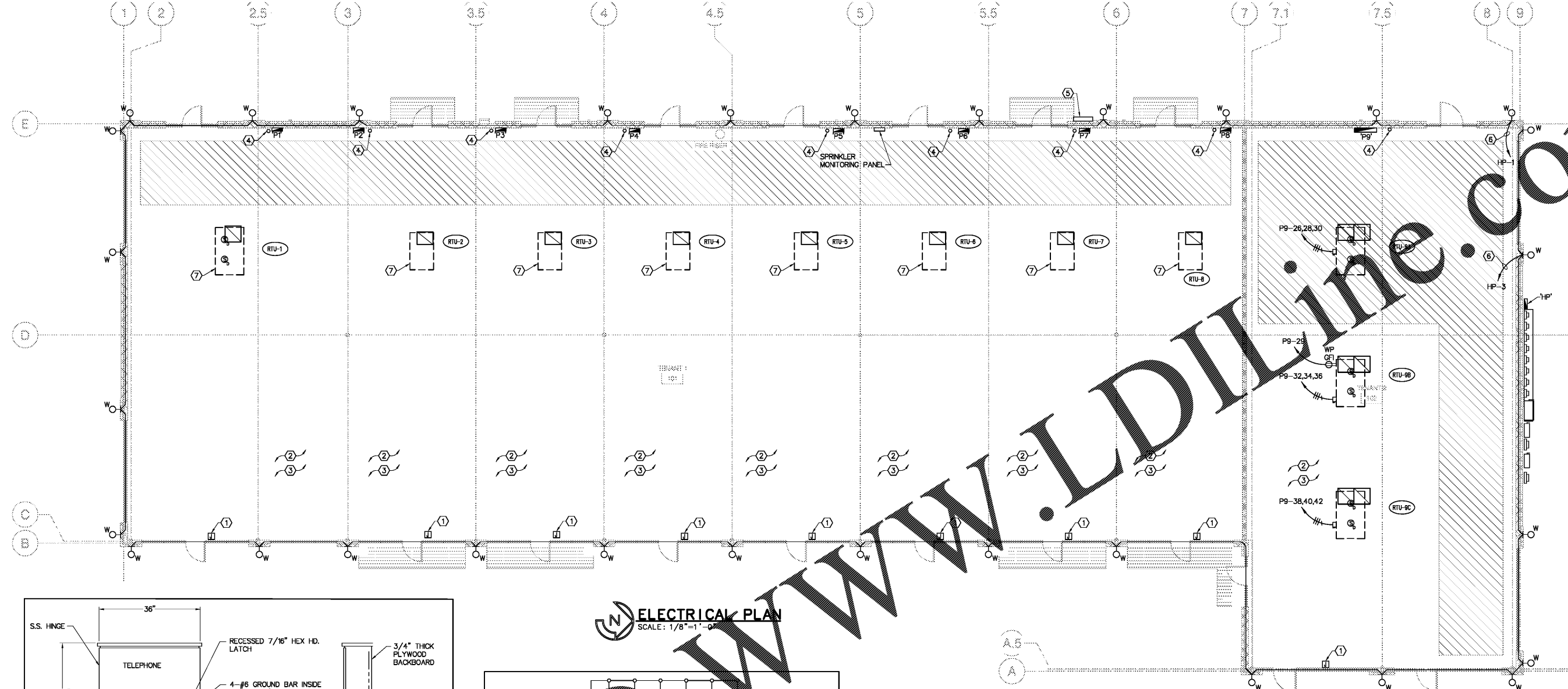


J:\40\03 West Palm Beach Retail Building\CADD\10103 E2.1.dwg, 6/6/2017 10:28:49 AM, Patricia Knippel, PDP1985.ppc



CONTACTOR SCHEDULE

CONTACTOR CABINET	DESIGNATION	# OF POLES	CIRCUITS CONTROLLED	CONTROLLED BY
LCC	C1	6	HP-1,3,5	PC ON / TC OFF

GENERAL NOTE:
1. REFER TO DRAWINGS FOR UNCONTROLLED CIRCUIT REQUIREMENTS, SOME CIRCUITS MAY BE PARTIALLY CONTROLLED.

- NOTES**
- JUNCTION BOX MOUNTED BEHIND FASCIA IN SOFFIT AREA FOR FUTURE TENANT SIGN (VERIFY EXACT LOCATION WITH GENERAL CONTRACTOR). EXTEND 3/4" C WITH PULLSTRING INTO TENANT SPACE ABOVE FUTURE CEILING FOR FUTURE CIRCUITING.
 - SHOW WINDOW RECEPTACLES FOR TENANT SPACE SHALL BE PROVIDED DURING TENANT BUILD-OUT. TENANT BUILD-OUT DOCUMENTS SUBMITTED SEPARATELY.
 - EMERGENCY LIGHTING FOR TENANT SPACE SHALL BE PROVIDED DURING TENANT BUILD-OUT. TENANT BUILD-OUT DOCUMENTS SUBMITTED SEPARATELY.
 - EC SHALL EXTEND (1) 2" UNDERGROUND FROM MAIN TELEPHONE BOARD TO TENANT SPACE FOR FUTURE TELEPHONE SERVICE.
 - TELEPHONE TERMINAL CABINET (TTC). REFER TO DETAIL THIS SHEET FOR DETAIL. EXTEND (2) 4" EMPTY CONDUIT WITH PULL-STRING FROM TTC TO PROPERTY LINE FOR TELEPHONE SERVICE. COORDINATE LOCATION WITH TELCO.
 - ROUTE HOMERUN VIA LIGHTING CONTACTOR(S). REFER TO DIAGRAM THIS SHEET FOR DETAIL.
 - CONNECTION FOR RTU AND RECEPTACLES FOR TENANT SPACE SHALL BE PROVIDED DURING TENANT BUILD-OUT. TENANT BUILD-OUT DOCUMENTS SUBMITTED SEPARATELY.
- GENERAL NOTES**
- ALL EXPOSED CONDUIT SHALL BE LOCATED WITHIN JOIST SPACE AREA OR ATTACHED DIRECTLY TO THE JOIST. CONDUIT SHALL NOT BE SUSPENDED FROM STRUCTURE.
 - EXTEND UNCONTROLLED "HOT" CONDUCTOR TO ALL EMERGENCY LIGHTS, EXIT LIGHTS, AND NIGHT LIGHTS
 - CONTRACTOR SHALL COORDINATE LOCATION AND MOUNTING HEIGHT OF ALL EXTERIOR SOFFIT LIGHTS AND WALLPACKS WITH ARCHITECTURAL DRAWINGS AND DETAIL.

HVAC EQUIPMENT SCHEDULE

UNIT DESIGNATION	WIRE AND CONDUIT		DISCONNECTING MEANS
	FEEDER	BRANCH	
RTU-1,2,3,4,5,6,7 & 8	BY TENANT	BY TENANT	BY TENANT
RTU-9A, 9B & 9C	1" C WITH 3 #4, 1 #6 EG.	1" C WITH 3 #4, 1 #6 EG.	60/3/0/NFPA 3R

GENERAL NOTES:
(1) EC IS ADVISED THAT FUSE REDUCER MAY BE REQUIRED.

MICHAEL BRADY INC.
ARCHITECTURE INTERIORS
1560 PALM BEACH LAKES BLVD
WEST PALM BEACH, FL 33401
PHONE: 561-836-0330
FAX: 561-836-0330
WWW.MICHAELBRADYINC.COM

THE DESIGN PROFESSIONAL DENIES ANY AND ALL RESPONSIBILITY AND LIABILITY FOR PROBLEMS WHICH ARISE FROM FAILURE TO FOLLOW THESE PLANS, SPECIFICATIONS AND THE DESIGN INTENT THEY CONVEY, OR PROBLEMS WHICH ARISE FROM OTHERS FAILURE TO OBTAIN AND/OR FOLLOW THE DESIGN PROFESSIONAL'S GUIDANCE WITH RESPECT TO ANY ERRORS, OMISSIONS, INCONSISTENCIES, AMBIGUITIES OR CONFLICTS WHICH ARE ALLEGED.

COPYRIGHT © MICHAEL BRADY INC. 2017

WEST PALM BEACH RETAIL BUILDING
1560 PALM BEACH LAKES BLVD
WEST PALM BEACH, FL 33401

THIS DRAWING HAS BEEN ISSUED.
FOR REVIEW ONLY
FOR PERMITTING ONLY
SCHEMATIC DESIGN
DESIGN DEVELOPMENT
CONSTRUCTION DOCUMENTS

Drawing Title:
ELECTRICAL PLAN

Date: 05/24/17
Designed By: DS
Drawn By: SW
Reviewed By: DS
Comm. No. 170217
Revisions:

Job Number: 40103
Colwill Engineering
Consulting Engineers, Inc.
Engineering Business No. 9021
4700 East Adamo Drive Tampa, Florida 33606
Tel: 813-841-2000 Fax: 813-841-2404
© 2017 ALL RIGHTS RESERVED

Sheet No. **E2.1**
of