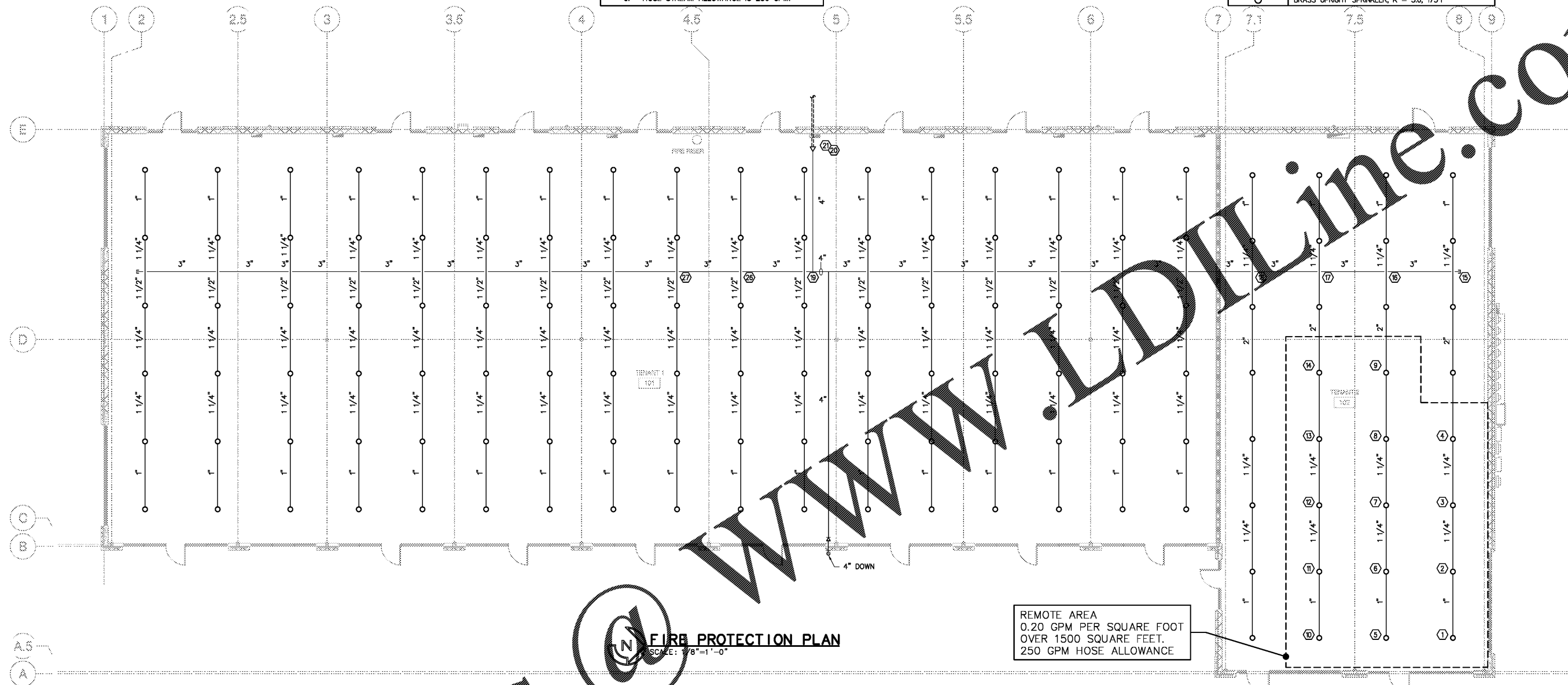


**DESIGN CRITERIA**

- RETAIL SPACES ARE ORDINARY HAZARD GROUP 2.
  - MAXIMUM SPRINKLER COVERAGE IS 130 SQ FT.
  - DENSITY IS 0.20 GPM / SQ FT.
  - HYDRAULIC DESIGN AREA IS 1500 SQ FT.
  - HOSE STREAM ALLOWANCE IS 250 GPM.

FIRE PROTECTION LEGEND	
SYMBOL	DESCRIPTION
⊙	CHROME RECESSED PENDENT SPRINKLER; K = 5.6; 155°F
○	BRASS UPRIGHT SPRINKLER; K = 5.6; 175°F



**FIRE PROTECTION PLAN**  
SCALE: 1/8"=1'-0"

**NOTE**

BY DIRECTION OF THE ARCHITECT, INSTALL BRANCHLINES RUNNING FRONT TO REAR AS SHOWN. PROVIDE TRAPEZE HANGERS AS REQUIRED TO COMPLY WITH NFPA 13 FOR HANGER SPACING.

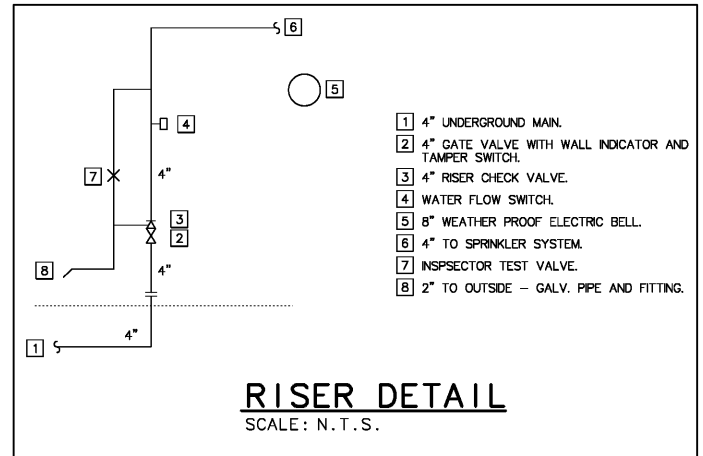
**UNDERGROUND FIRE MAIN NOTES**

- SEE CIVIL DRAWINGS FOR LOCATION OF FIRE MAINS, SHOWN HERE TO GIVE HYDRAULIC REFERENCE POINTS AND POINT OF SERVICE. FIRE PROTECTION CONTRACTOR TO COORDINATE LOCATION OF MAINS AND STUB-UPS FOR SPRINKLER RISERS WITH ALL OTHER CONTRACTORS AND MAKE ADJUSTMENTS AS NECESSARY TO PROVIDE COMPLETE SYSTEM AT NO ADDITIONAL COST TO THE OWNER.
- UNDERGROUND FIRE MAINS TO BE 14" PVC (C-900) OR CLASS 50 DUCTILE IRON (DI). ABOVE GROUND PORTION OF MAINS TO BE CLASS 50 (OR HIGHER) DI. PIPING UNDER THE BUILDING SHALL BE MECHANICALLY JOINT CLASS 53 DI.
- INSTALL FLUSH AND TEST OUTSIDE FIRE MAINS PER NFPA 24 2010, AND AHJ. ALL WORK ASSOCIATED WITH UNDERGROUND FIRE MAIN FROM POINT OF SERVICE TO SPRINKLER RISER SHALL BE PERFORMED BY A CLASS I, II, OR V FIRE PROTECTION CONTRACTOR.
- COMPLY WITH ALL APPLICABLE REQUIREMENTS OF CIVIL DRAWINGS AND SPECIFICATION UNLESS THERE IS A CONFLICT. IN THAT CASE, COMPLY WITH THE MORE STRINGENT OF THE REQUIREMENTS OF NFPA 24 OR AHJ.
- PROVIDE FIRE DEPARTMENT CONNECTIONS OF TYPE AND AT LOCATIONS REQUIRED BY FIRE DEPARTMENT. ADDITIONAL UNDERGROUND PIPE AND FITTINGS MAY BE REQUIRED TO MEET THIS REQUIREMENT. FIRE PROTECTION CONTRACTOR SHALL INCLUDE ALL COST ASSOCIATED WITH PROVIDING FIRE DEPARTMENT CONNECTION IN BID.

**SPRINKLER DRAWING NOTES**

- INSTALL WET PIPE SPRINKLER SYSTEM TO PROVIDE COMPLETE COVERAGE PER 2010 EDITION OF NFPA 13, THE 2010 EDITION OF FLORIDA FIRE PREVENTION CODE, AND LOCAL AUTHORITY HAVING JURISDICTION.
- INSTALL SPRINKLERS NO LESS THAN ONE FOOT FROM LIGHTS, GRILLES, AND T-BARS.
- PIPE AND FITTINGS SHALL BE TYPE SPECIFICALLY IN NFPA 13. SCHEDULE 5 PIPE WHEN PRESS ON FITTINGS IS NOT ALLOWED.
- ALL DEVICES TO BE UL LISTED OR FM APPROVED.
- ALL MATERIAL, METHODS AND DESIGN SHALL BE PER NFPA DOCUMENTS LISTED ABOVE.
- PROVIDE ALL HANGERS INCLUDING TRAPEZE HANGERS AS REQUIRED TO COMPLY WITH NFPA, THE PIPE MANUFACTURER'S RECOMMENDATIONS, AND THE UL LISTING OF THE PIPE. COMPLY WITH NFPA 13 FOR HANGERS ON ARM-OVERS.
- PROVIDE SPARE SPRINKLERS AND SPRINKLER WRENCH IN METAL CABINET PER NFPA 13.
- COORDINATE EXACT LOCATIONS OF SPRINKLERS AND PIPING WITH CEILING, ELECTRICAL, MECHANICAL AND STRUCTURAL ELEMENTS OF BUILDING. MAKE MODIFICATION WITHOUT ADDITIONAL COST TO THE OWNER. IF IT IS NECESSARY TO LOCATE THE SPRINKLERS AT LOCATIONS OTHER THAN AS SHOWN ON THESE DRAWINGS, LOCATE THEM IN AN AESTHETICALLY PLEASING PATTERN WITH CONSIDERATION FOR LIGHTS AND GRILLES. OBTAIN ARCHITECT'S APPROVAL OF SPRINKLER LOCATIONS IN WRITING. THE ARCHITECT HAS FINAL AND ABSOLUTE AUTHORITY TO REJECT LOCATION OF SPRINKLERS FOR AESTHETIC REASONS. AHJ HAS AUTHORITY TO REJECT THEM FOR CODE REASONS. CONTRACTOR SHALL ADVISE ARCHITECT ON SPACING LIMITATIONS OF SPRINKLERS TO MAINTAIN COMPLIANCE WITH NFPA 13 AND THE SPRINKLER UL LISTING.
- PROVIDE ALL DRAINS REQUIRED TO COMPLY WITH NFPA 13
- FLUSH AND TEST SYSTEM IN ACCORDANCE WITH NFPA 13.
- CONTRACTOR SHALL PREPARE SHOP DRAWINGS AND EQUIPMENT SUBMITTALS BASED UPON THESE PLANS AND OBTAIN APPROVAL OF THE ENGINEER OF RECORD AND AUTHORITY HAVING JURISDICTION, PRIOR TO CONSTRUCTION. IF THE DESIGN DEPICTED ON THESE DRAWINGS EXCEEDS THE MINIMUM REQUIREMENTS OF NFPA 13 OR THE AHJ, COMPLY WITH THESE DRAWINGS UNLESS WRITTEN APPROVAL IS REQUESTED OF AND

- OBTAINED FROM THE ENGINEER OF RECORD PRIOR TO BIDDING. IF APPROVAL IS NOT REQUESTED AND THE DEVIATION IS INCORPORATED INTO THE SHOP DRAWINGS, APPROVAL OF SHOP DRAWINGS DUE TO THE FAILURE OF THE ENGINEER OF RECORD TO DETECT THE DEVIATION WILL NOT RELIEVE THE CONTRACTOR OF RESPONSIBILITY TO MEET THIS REQUIREMENT. IN THAT CASE, THE CONTRACTOR, AT HIS OWN EXPENSE, SHALL MAKE ANY MODIFICATIONS NECESSARY TO COMPLY WITH THIS REQUIREMENT.
- IF CONFLICTS EXIST OR ALLOCATED SPACE IS INADEQUATE, CONTRACTOR TO NOTIFY ARCHITECT PRIOR TO BIDDING AND OBTAIN WRITTEN INSTRUCTIONS FOR RESOLUTION.
- SEAL ALL OPENINGS THROUGH FLOORS, CEILINGS AND PARTITIONS TO RE-ESTABLISH THE FIRE RATING OF THAT FLOOR, CEILING OR PARTITION
- ALL PIPING IN AREAS WITH DROPPED CEILINGS SHALL BE CONCEALED ABOVE THE CEILING.
- SPRINKLER SYSTEM SHALL BE INSTALLED BY A CLASS I OR CLASS II FIRE PROTECTION CONTRACTOR.
- CONTRACTOR SHALL OBTAIN ALL REQUIRED PERMITS AND PAY ALL RELATED FEES.
- IF THE UNDERGROUND MAINS ARE INSTALLED BY OTHER THAN THE FIRE PROTECTION CONTRACTOR WHO INSTALLS THE SPRINKLER SYSTEM, THIS CONTRACTOR SHALL OBTAIN PROOF FROM THE GENERAL CONTRACTOR THAT THE UNDERGROUND WAS INSTALLED, FLUSHED AND TESTED BY A CLASS I, II, OR V FIRE PROTECTION CONTRACTOR PRIOR TO CONNECTING TO THAT PIPE.
- SPRINKLER RISER SHALL INCLUDE A BUTTERFLY VALVE, RISER CHECK VALVE, MAIN DRAIN, AND WATER FLOW SWITCH. THE BUTTERFLY VALVE SHALL BE EQUIPPED WITH A TAMPER SWITCH
- INSTALL A FIRE DEPARTMENT CONNECTION OF THE TYPE AND AT LOCATION REQUIRED BY THE LOCAL FIRE DEPARTMENT. INCLUDE SIGNAGE IDENTIFYING THE BUILDING PROTECTED BY EACH FIRE DEPARTMENT CONNECTION.
- ALL SPACES WITH DROPPED CEILINGS SHALL BE EQUIPPED WITH WHITE RECESSED SPRINKLERS.
- UTILITY AND AREAS WITHOUT DROPPED CEILINGS SHALL BE EQUIPPED WITH BRASS UPRIGHT SPRINKLERS.



**RISER DETAIL**  
SCALE: N.T.S.

**MIBI**  
michaelbrady inc.  
ARCHITECTURE INTERIORS  
1560 PALM BEACH LAKES BLVD  
WEST PALM BEACH, FL 33401  
PHONE: 407-566-0380  
FAX: 407-566-0380  
www.michaelbradyinc.com

THE DESIGN PROFESSIONAL DENIES ANY AND ALL RESPONSIBILITY AND LIABILITY FOR PROBLEMS WHICH ARISE FROM FAILURE TO FOLLOW THESE PLANS, SPECIFICATIONS AND THE DESIGN INTENT THEY CONVEY, OR PROBLEMS WHICH ARISE FROM OTHERS FAILURE TO OBTAIN AND/OR FOLLOW THE DESIGN PROFESSIONAL'S GUIDANCE WITH RESPECT TO ANY ORDERS, OMISSIONS, INCONSISTENCIES, AMBIGUITIES OR CONFLICTS WHICH ARE ALLEGED.

COPYRIGHT © MICHAEL BRADY INC. 2017

A NEW DEVELOPMENT FOR:  
**WEST PALM BEACH RETAIL BUILDING**  
1560 PALM BEACH LAKES BLVD  
WEST PALM BEACH, FL 33401

THIS DRAWING HAS BEEN ISSUED:  
 FOR REVIEW ONLY  
 FOR PERMITTING ONLY  
 SCHEMATIC DESIGN  
 DESIGN DEVELOPMENT  
 CONSTRUCTION DOCUMENTS

Drawing Title: FIRE PROTECTION PLAN

Date: 05/24/17

Designed By: LR  
Drawn By: CH  
Reviewed By: LR

Comm. No. 170217

Revisions:

Job Number: 40103  
**Colwill Engineering**  
Consulting Engineers, Inc.  
Engineering Business No. 9021  
4750 East Adamo Drive Tampa, Florida 33606  
Tel: 813-241-2820 Fax: 813-241-2424  
© 2017 ALL RIGHTS RESERVED

Sheet: of  
Sheet No. **FP1.1**