

METAL STUDS FASTENING NOTES
 (UNO.)

- METAL STUDS SHALL BE CONNECTED TO STRUCTURAL STEEL w/ (2) \emptyset 11" + P.D.F.'s
- METAL STUDS SHALL BE CONNECTED TO METAL STUDS / CLIP ANGLES w/ MIN. (4) NO. 12-14 SCREWS
- CONTINUOUS TRACK SHALL BE CONNECTED TO STRUCTURAL STEEL w/ (2) \emptyset 11" + P.D.F.'s AT 24" O.C.
- CONTINUOUS TRACK / STUDS SHALL BE CONNECTED TO CMU w/ (2) 1/4" + TAPCONS AT 24" O.C.
- CONNECT SHEATHING TO METAL STUDS w/ NO. 12-14 SCREWS AT 6" O.C.
- 1/4" GA. CLIP ANGLES SHALL BE CONNECTED TO CMU w/ (2) 1/4" + TAPCONS

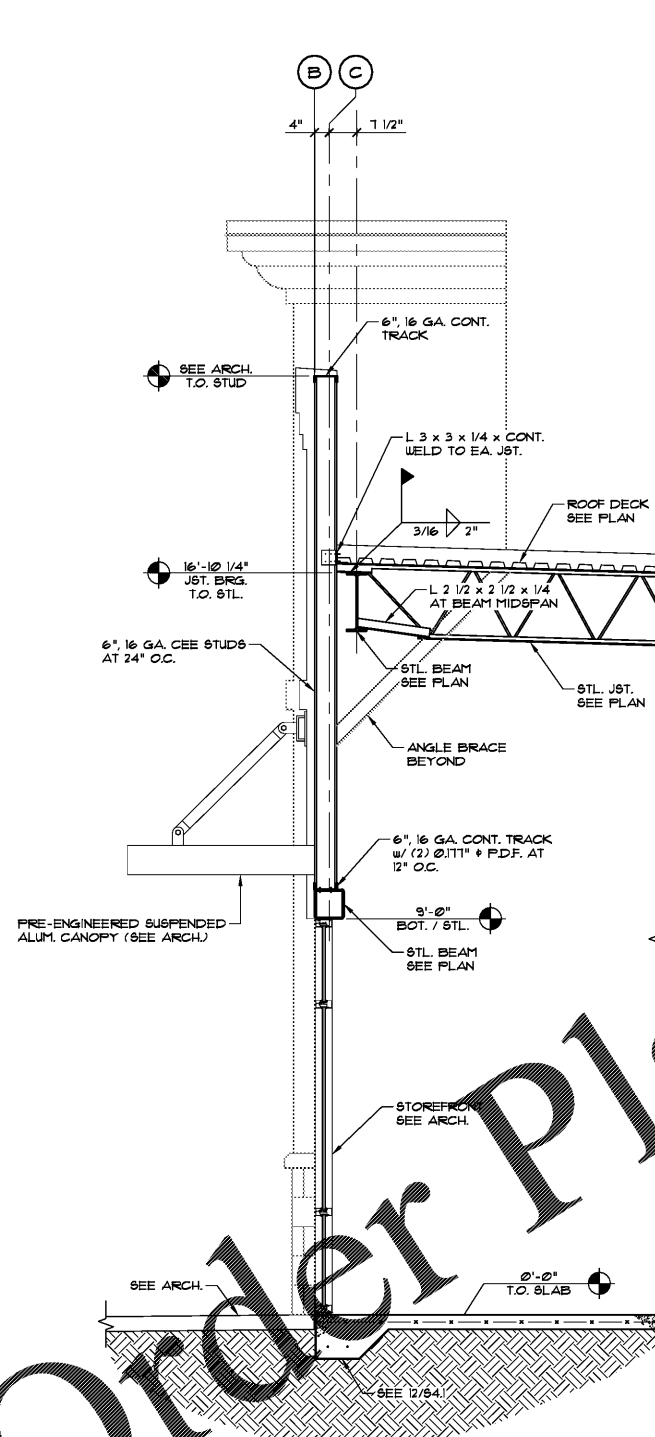
MTL. STUD WELDING NOTE:

WELD TRUSS w/ 3/32" OR 1/8" AUS TYPE 6013 OR 1014 ROD WITH A WELDING HEAT OF 60-160 AMPERES DEPENDING ON GAGE OF MATERIAL AND FIT.

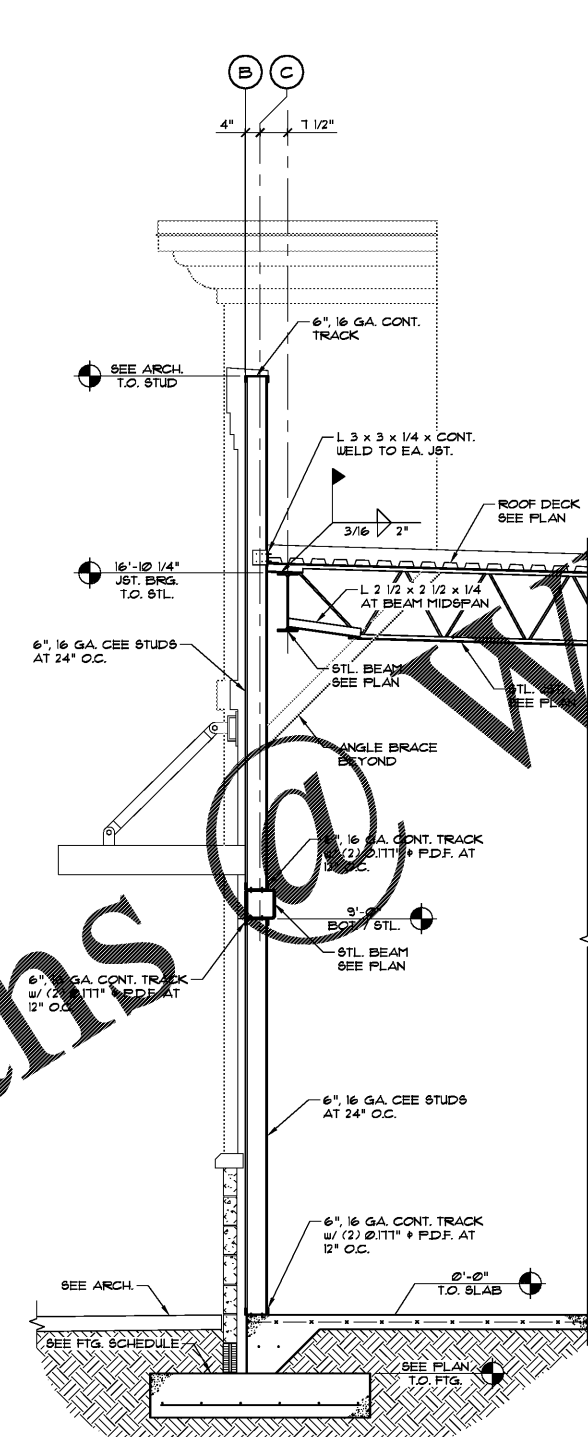
COORDINATE ALL SOFFIT HEIGHTS AND SECTIONS w/ ARCH

COORDINATE ALL DIMENSIONS WITH ARCHITECTURAL DRAWINGS

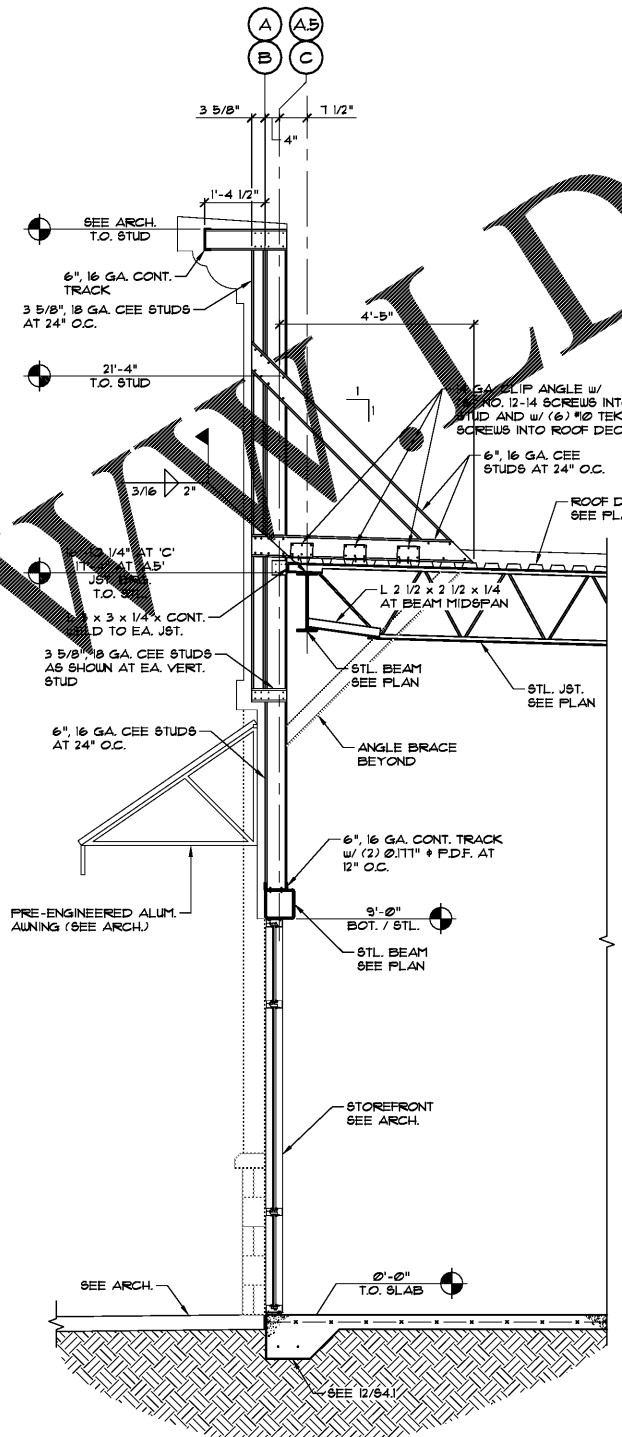
SEE ARCH FOR SHEATHING



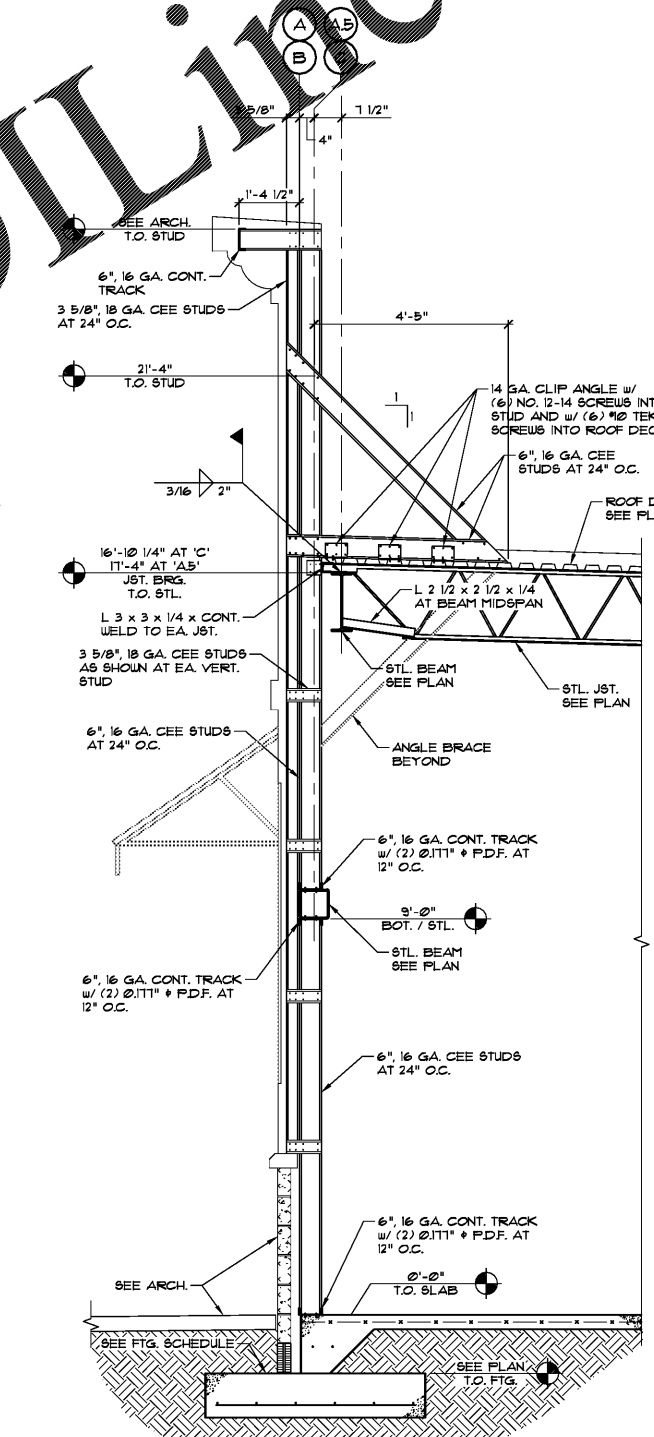
1 SECTION
 S3.1 SCALE: 1/2" = 1'-0"



2 SECTION
 S3.1 SCALE: 1/2" = 1'-0"



3 SECTION
 S3.1 SCALE: 1/2" = 1'-0"



4 SECTION
 S3.1 SCALE: 1/2" = 1'-0"

Order Plans @ WWW.DIline.com