

**FOUNDATION PLAN**  
SCALE: 1/8" = 1'-0"

**FOUNDATION SCHEDULE**

MARK	SIZE	THK.	REINF. ELEVATION	COMMENTS
WF2.0	2'-0" x CONT.	1'-0"	(3) #5 CONT. (BOT.)	
FB.0	6'-0" x 5'-0"	1'-0"	(6) #5 (BOT.)	
F6.0	6'-0" x 6'-0"	1'-4"	(8) #5 (BOT.)	
F6.7	6'-0" x 2'-0"	1'-4"	(8) #5 LONG (BOT.) (3) #5 SHORT (BOT.)	

NOTE: SEE ARCH. DRAWINGS FOR LOCATION OF MASONRY CONTROL JOINTS. SEE 3/84.1. LOCATE M.C.J. AT 34'-0" O.C. (MAX.) AND 2'-0" (MIN.) FROM DOOR OR WINDOW EDGE.

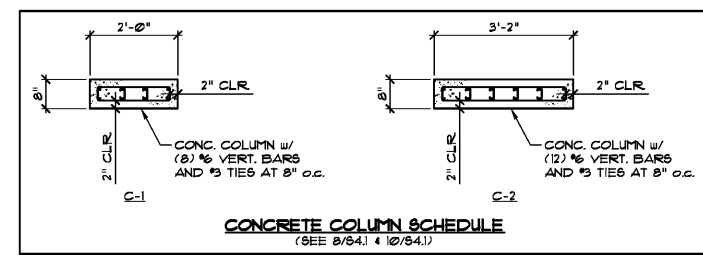
- FOUNDATION PLAN NOTES**
- SLAB ON GRADE TO BE 4" THICK w/ 6" x 6" - W14 x W14 WUF ON VAPOR BARRIER AND COMPACTED FILL (UNO.)
  - TOP OF SLAB = 0'-0" (UNO.)
  - DIMENSIONS ARE TO FACE OF MASONRY AND CENTERLINE OF COLUMNS.
  - CENTER FOOTINGS UNDER CMU WALLS AND COLUMNS.
  - SEE MASONRY LEGEND FOR WALL REINFORCEMENT.
  - SEE ARCH. DRGS. FOR VENEER.
  - TOP OF FOOTING ELEVATION = -1'-4" (UNO.)
  - SEE ARCH. DRGS. FOR SIZE AND LOCATION OF MASONRY OPENINGS (M.O.).
  - STEP FOOTING TO MAINTAIN 1'-0" COVERAGE. (SEE 9/84.1) SEE CIVIL DRGS. FOR FINISH GRADE.
  - PROVIDE 2'-6" x 2'-6" FOUNDATION CORNER BARS AT ALL CORNERS AND INTERSECTIONS (MATCH REINF. BARS)

**MASONRY WALL REINFORCEMENT SCHEDULE**  
(SEE 6/84.1)

WALLS ARE TO BE REINFORCED AS SHOWN BELOW. IN ADDITION VERT. BARS SHALL BE PLACED @ CORNERS, EACH SIDE OF OPENINGS AND INTERSECTIONS. DOVEL INTO FOOTINGS AND TIE BEAMS. HORIZONTAL REINFORCEMENT = 3 GA. @ 16" O.C. NOTE: FILL ALL CELLS SOLID BELOW FINISH FLOOR.

8" CMU WALL w/ #6 VERTICAL BARS AT 24" O.C.  
(NOTE: PROVIDE SAME WALL REINF. ABOVE OPENINGS)

8" CMU WALL w/ #6 VERTICAL BARS AT 8" O.C.



Order Plans @ WWW.LDLINE.COM