

1560 PALM BEACH CENTER PARKWAY  
 SUITE 200  
 LAKE HAVY, FLORIDA 33406  
 PHONE: 407.596.0300  
 FAX: 407.596.0306  
 www.michaelbradyinc.com

**MBI**  
 michaelbrady inc.  
 # FCH126174 P - INT 01018  
 A-33000028

THE DESIGN PROFESSIONAL DENIES ANY AND ALL RESPONSIBILITY AND LIABILITY FOR PROGRAMS WHICH ARISE FROM FAILURE TO FOLLOW THESE PLANS, SPECIFICATIONS AND THE DESIGN INTENT THEY CONVEY, OR PROGRAMS WHICH ARISE FROM OTHERS FAILURE TO OBTAIN AND/OR FOLLOW THE DESIGN PROFESSIONAL'S GUIDANCE WITH RESPECT TO ANY ERRORS, OMISSIONS, INCONSISTENCIES, AMBIGUITIES OR CONFLICTS WHICH ARE ALLEGED.

COPYRIGHT © MICHAEL BRADY INC. 2017

SCOTT D. MALENOCK  
 APR25 10 104990

A NEW DEVELOPMENT FOR:  
**WEST PALM BEACH  
 RETAIL BUILDING**  
 1560 PALM BEACH LAKES BLVD  
 WEST PALM BEACH, FL 33401

THIS DRAWING HAS BEEN ISSUED:  
 FOR REVIEW ONLY  
 FOR PERMITTING ONLY  
 SCHEMATIC DESIGN  
 DESIGN DEVELOPMENT  
 CONSTRUCTION DOCUMENTS

Drawing Title:  
 REFLECTED CEILING  
 PLAN

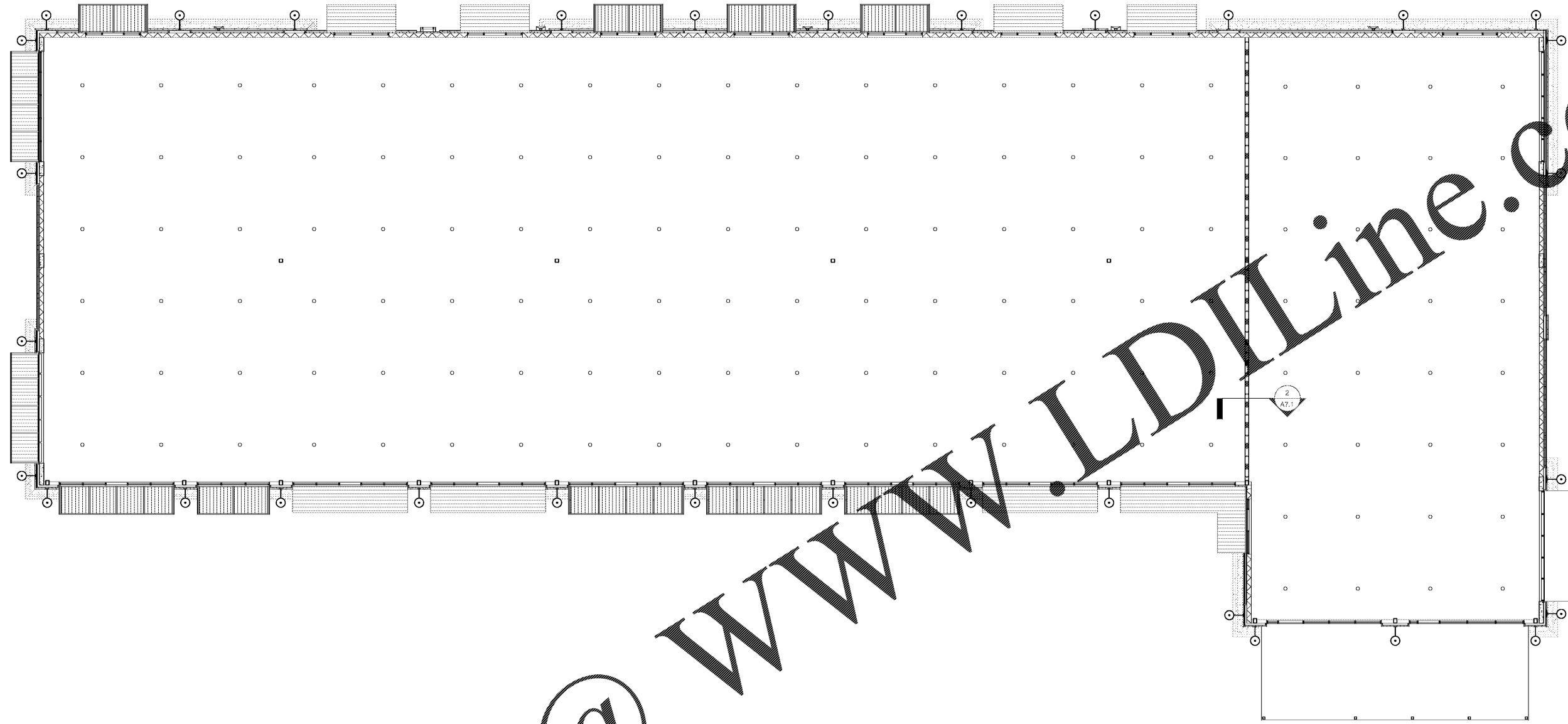
Date: 05/24/17

Designed By: A.L.S.  
 Drawn By: A.L.S.  
 Reviewed By: S.D.M.

Comm. No. 170217

Revisions:

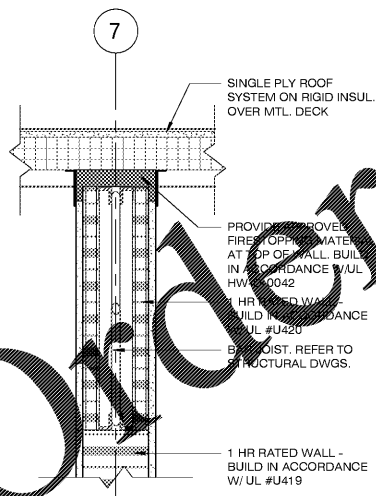
Sheet:  
 No. **A7.1**  
 of



**REFLECTED CEILING PLAN**

SCALE: 1/8" = 1'-0"

1



**ENLARGED DETAIL**

SCALE: 1 1/2" = 1'-0"

2

Order Plans @ [www.LDILine.com](http://www.LDILine.com)