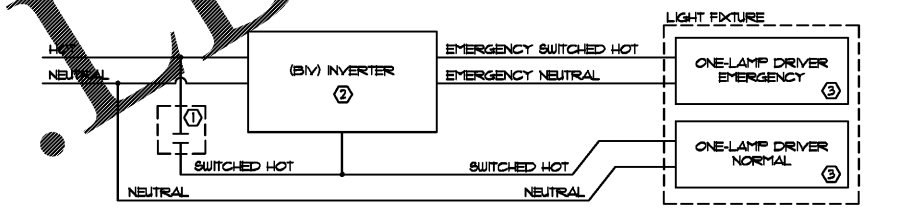
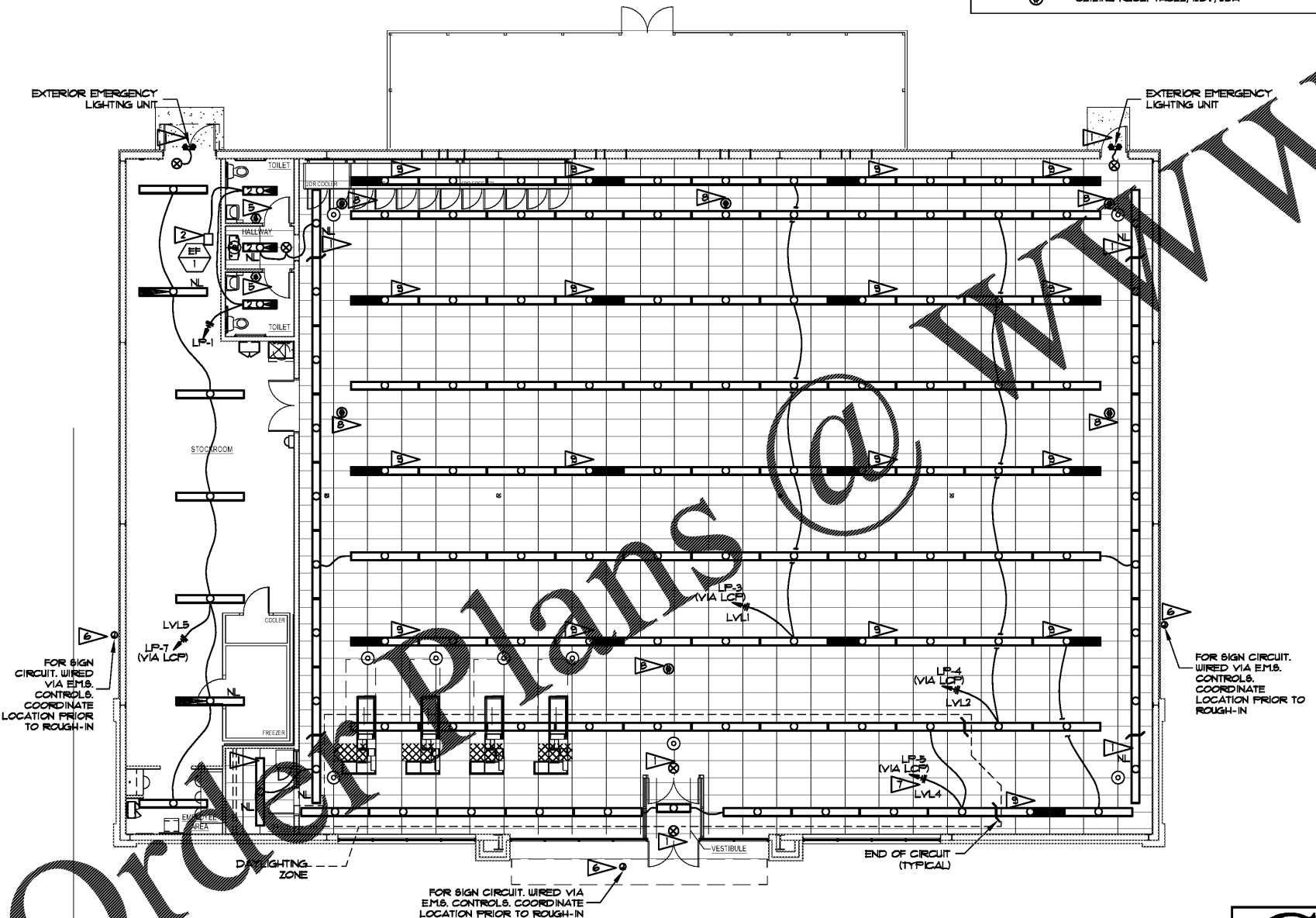


4 SCHEMATIC DIAGRAM: BATHROOM OCCUPANCY SENSOR
 E-2 SCALE: NONE

REFLECTED CEILING LEGEND

	+2'-0"X4'-0" ACOUSTICAL CEILING TILE AND GRID- SEE FINISH NOTE 4.
	GWB - PAINT WHITE UNLESS OTHERWISE NOTED.
	MIRROR PANEL
	DIFFUSER
	RETURN GRILLE
	DOVE
	VENTILATION FAN
	CEILING HEIGHT (ABOVE FINISH FLOOR)
	POWER POLE
	SCD ● CEILING MOUNTED SECURITY CAMERA DOVE
	SCD ◻ WALL MOUNTED SECURITY CAMERA DOVE, MOUNT @ 10'-0" AFF
	○ OCCUPANCY SENSOR. SEE NOTE 5.
	⊕ CEILING RECEPTACLE, 120V, 20A

- LIGHTING PLAN NOTES:**
- ALL EXIT SIGNS, NIGHT LIGHTS, AND EXTERIOR EMERGENCY LIGHTS ARE ON PANEL "LP", CIRCUIT 2. WIRING NOT SHOWN FOR DRAWING CLARITY.
 - SEE MECHANICAL DRAWINGS FOR EXACT LOCATION OF EXHAUST FAN.
 - THE ELECTRICIAN SHALL INSTALL ADDITIONAL WIRE TIE SUPPORTS FROM THE CEILING GRID TO THE STRUCTURE ABOVE FOR SUPPORT OF THE LIGHT FIXTURES CLIPPED ON THE GRID.
 - NOT USED
 - TOILET ROOMS SHALL HAVE OCCUPANCY SENSORS INSTALLED AND CONNECTED AS SHOWN IN DETAIL #4 - SCHEMATIC DIAGRAM ON THIS SHEET. MOUNT ON WALL NEXT TO DOOR INSIDE RESTROOM. LIGHTING OCCUPANCY SENSORS TO BE WIRED INDEPENDENTLY OF THE ENERGY MANAGEMENT SYSTEM VIA CIRCUIT LP-1.
 - ELECTRICAL CONTRACTOR SHALL COORDINATE FINAL JUNCTION BOX LOCATION WITH SIGN VENDOR. JUNCTION BOXES TO BE WITHIN FIVE FEET OF SIGN AND INCLUDE 6" WIPF FOR SIGN VENDOR TO MAKE FINAL CONNECTION. CIRCUITS RP-36, RP-38, & RP-40 SEE FOR BUILDING S.I.P.
 - THE FIRST TWO ROWS OF LIGHT FIXTURES WILL BE PROVIDED WITH INDEPENDENT CONTROL FOR DAY-LIGHTING PER IECC. THESE CIRCUITS SHALL BE ROUTED THROUGH THE LCP FOR DAY-LIGHTING CONTROL.
 - THE DAY-EX OUTLET TO BE MOUNTED IN CEILING TILE AND WIRED TO PANEL "RP", CIRCUIT 1. VERIFY LOCATION PRIOR TO INSTALLATION.
 - NOTED FIXTURE SHALL HAVE ONE LAMP CIRCUITED TO INVERTER AND ONE LAMP CIRCUITED TO NORMAL POWER. CIRCUIT LP-3 SHALL BE USED FOR THESE FIXTURES. THE INVERTER SHALL BE ON LEVEL 1. CONTRACTOR OF THE ENERGY MANAGEMENT SYSTEM. SEE INVERTER WIRING DIAGRAM ON THIS SHEET.



- DUAL VOLTAGE RATED, E.M.S. LVL1 CONTACTOR. CONNECT EITHER 120V OR 277V, NOT BOTH. SELECT PROPER VOLTAGE LEADS ON INPUT AND OUTPUT OF BIV.
 - PROVIDED BY TENANT FOR INSTALLATION BY CONTRACTOR.
 - THE NEUTRAL TO THE NORMAL LAMP AND THE NEUTRAL TO THE EMERGENCY LAMP MUST BE SEPARATE CONDUCTORS AND NOT CONNECTED TO EACH OTHER AT ANY POINT IN THE CIRCUIT, INCLUDING INSIDE THE FIXTURE.
- LIGHT FIXTURE: AS REPRESENTED ON PLANS

2 SCHEMATIC DIAGRAM: INVERTER WIRING (BIV)
 E-2 SCALE: NONE FOR EMPLOYEE LIGHTING CIRCUIT

ANY NEW LIGHTING WILL BE PROVIDED BY TENANT FOR TENANT'S CONTRACTOR INSTALLATION

LIGHT FIXTURE SCHEDULE

FIKT. SYMB.	LIGHT DESCRIPTION	VOLTS	WATTS	LAMP QTY, WATTS, TYPE	LAMPS	MOUNTING	SCHEDULE NOTES
⚡	EMERGENCY LIGHT (EXTERIOR - SEE NOTE 1)	SEE ELEC. PANEL	2	(2) 1 WATT LED		WALL OVER EXTERIOR DOOR	EMERGENCY LIGHT WITH REMOTE BATTERY
⚡	EMERGENCY LIGHT (INTERIOR)	SEE ELEC. PANEL	2	(2) 1 WATT LED		SURFACE	EMERGENCY LIGHT UNIT
⊕	EXIT LIGHT	SEE ELEC. PANEL	5	FURNISHED WITH FIXTURE		CEILING UNLESS OTHERWISE REQUIRED BY CODE	I.E.D. SINGLE-FACE EXIT SIGN W/EMERGENCY BATTERY NOTES: A, C, D, E, F, G
—	8'-0" STRIP LIGHT	SEE ELEC. PANEL	35	(2) 30W LED	FURNISHED WITH FIXTURE	CEILING SURFACE	INTERIOR/EXTERIOR STRIP NOTES: A, C, D, E, F, G
—	8'-0" STRIP LIGHT (EMERGENCY LIGHT)	SEE ELEC. PANEL	35	(2) 30W LED	FURNISHED WITH FIXTURE	CEILING SURFACE	EMERGENCY LIGHT OR INVERTER SYSTEM NOTES: A, C, D, E, F, G
—	8'-0" STRIP LIGHT (EMERGENCY LIGHT)	SEE ELEC. PANEL	35	(2) 30W LED	FURNISHED WITH FIXTURE	CEILING SURFACE	EMERGENCY LIGHT WITH INTEGRAL BATTERY PACK NOTES: A, C, D, E, F, G
—	4'-0" STRIP LIGHT	SEE ELEC. PANEL	18	(1) 30W LED	FURNISHED WITH FIXTURE	CEILING SURFACE	INTERIOR/EXTERIOR STRIP NOTES: A, C, D, E, F, G
—	4'-0" STRIP LIGHT (EMERGENCY LIGHT)	SEE ELEC. PANEL	18	(2) 30W LED	FURNISHED WITH FIXTURE	CEILING SURFACE	EMERGENCY LIGHT WITH INTEGRAL BATTERY PACK NOTES: A, C, D, E, F, G

LIGHT FIXTURE SCHEDULE NOTES:

- DESIGNATED FIXTURE SHALL HAVE LED LAMPS.
- CUT INSULATION (WHEN BATTERY IS USED) OR PROVIDE SHIELD AROUND FIXTURE (WHEN BLOW-IN TYPE IS USED) TO KEEP INSULATION A MINIMUM OF 3" AWAY FROM FIXTURE.
- ATTACH FIXTURE TOY BAR PER SPEC AND BE.
- FIXTURE PROVIDED WITH DUAL VOLTAGE 120/277V POWER SUPPLY. VERIFY VOLTAGE FOR EACH FIXTURE LOCATION.
- EMERGENCY FIXTURE WIRED FROM INVERTER.
- LIGHT FIXTURES DENOTED BY "IN" SHALL REMAIN ON DURING BUSINESS WORKING HOURS.
- WITH NO FINISHED CEILING, LIGHT FIXTURES ABOVE THE SALES FLOOR SHALL BE SUSPENDED @ 12'-0" A.F.F. AND LIGHT FIXTURES ABOVE THE STOCKROOM SHALL BE SUSPENDED @ 10'-0" A.F.F.
- FOR EXISTING FIXTURES THAT ARE TO REMAIN, THE CONTRACTOR SHALL REPLACE ALL EXISTING LAMPS WITH NEW LAMPS PROVIDED BY THE CONTRACTOR.
- EXTERIOR EMERGENCY LIGHTING UNITS TO BE MOUNTED AT 7'-6" AFF FOR ALL SIDE AND REAR DOORS WHICH WILL PLACE THE LIGHT UNDER THE METAL DECK CANOPY.

LIGHTING PLAN
 SCALE: 1/8"=1'-0"
 NORTH

	DOLLAR TREE COLUMBUS, GA LIGHTING PLAN PROJ. NO. 605617 DWG. NO. E-2.1																
391 SPRING HILL AVENUE MOBILE, ALABAMA 36688 (251) 344-7072 / FAX (251) 345-6179	<table border="1"> <tr> <th>REV.</th> <th>DATE</th> <th>BY/CHK</th> <th>DESCRIPTION</th> </tr> <tr> <td> </td> <td> </td> <td> </td> <td> </td> </tr> <tr> <td> </td> <td> </td> <td> </td> <td> </td> </tr> <tr> <td> </td> <td> </td> <td> </td> <td> </td> </tr> </table>	REV.	DATE	BY/CHK	DESCRIPTION												
REV.	DATE	BY/CHK	DESCRIPTION														