

POWER/WIRING INFORMATION FOR HVAC EQUIPMENT				
HVAC*	DISCONNECT SIZE	CONDUIT/WIRE SIZE	FEEDER PANEL	FEEDER BREAKER(S)
RTU-1	PROVIDED WITH UNIT	1-1/4" (3/2" & (1) #6 GND.)	LP	19,21,23
RTU-2	PROVIDED WITH UNIT	1-1/4" (3/2" & (1) #6 GND.)	LP	25,27,29
RTU-3	PROVIDED WITH UNIT	1-1/4" (3/2" & (1) #6 GND.)	LP	31,33,35
RTU-4	PROVIDED WITH UNIT	1" (3/4" & (1) #6 GND.)	LP	37,39,41
H-1	CIRCUIT BREAKER	1/2" (2/2" & (1) #2 GND.)	LP	28,30

SPECIAL NOTE:
 CONTRACTOR SHALL REFER TO THE TEMPERATURE SENSOR MOUNTING DETAIL ON SHEET EM-3 FOR PLACEMENT AND INSTALLATION INSTRUCTIONS PRIOR TO INSTALLING.

POWER/WIRING INFORMATION FOR COOLER/FREEZER EQUIPMENT					
DEVICE*	DISCONNECT SIZE	CONDUIT/WIRE SIZE		FEEDER PANEL	FEEDER BREAKER(S)
C1	JUNCTION BOX • 120" AFF W/10' WHIP	1/2"	(3/2" & (1) #2 GND.**	CF	13
C2	8"x8"x6" JB • 120" AFF W/20' COILED WIRE	1/2"	(2/2" & (1) #2 GND.)	CF	5
F1	JUNCTION BOX • 120" AFF W/10' WHIP	3/4"	(3/2" & (1) #2 GND.**	CF	7,9
F2	JUNCTION BOX • 120" AFF W/10' WHIP	3/4"	(3/2" & (1) #2 GND.**	CF	11,3
F3	8"x8"x6" JB • 120" AFF W/20' COILED WIRE	1/2"	(2/2" & (1) #2 GND.)	CF	15,17
*CF	8"x8"x6" JB • 120" AFF W/20' COILED WIRE	1/2"	(2/2" & (1) #2 GND.)	CF	19

* FOR WALK-IN COOLER/FREEZER LIGHTS
 NOTE: ALL DIMENSIONS ARE TO THE TOP OF THE ASSOCIATED DEVICE. FINAL TERMINATIONS TO COOLER & FREEZER EQUIPMENT IS BY THE EQUIPMENT INSTALLER.
 ** INCLUDES: (2) HOT, (1) NEUTRAL, & (1) GROUND

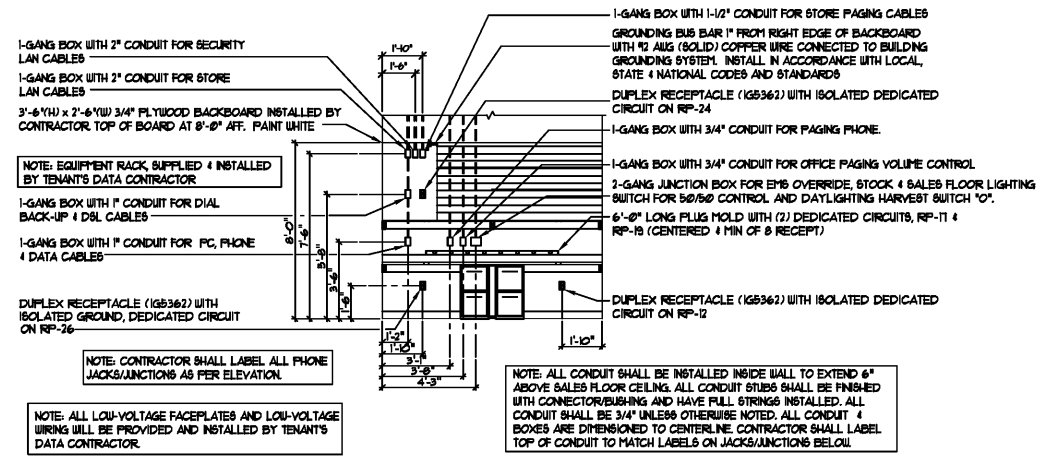
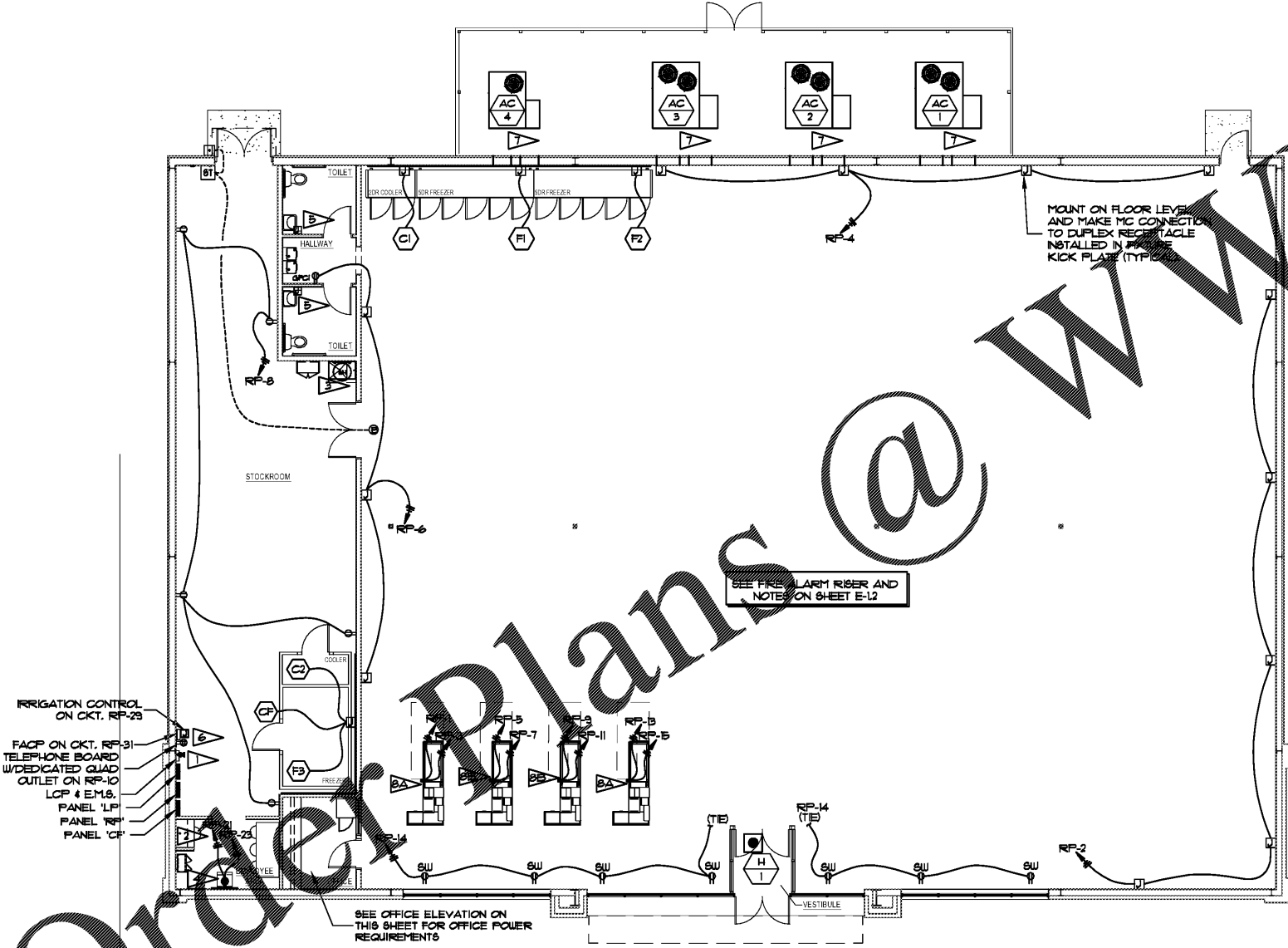
POWER PLAN NOTES:

- CONTRACTOR SHALL REFER TO EMB SHEETS FOR INSTRUCTION AND RESPONSIBILITIES FOR INSTALLING OWNER/DEVELOPER SUPPLIED ENERGY MANAGEMENT SYSTEM PER BID BIDDING AND INSTALLATION.
- FOR EMPLOYEE DESK AREA, PROVIDE AND INSTALL 30" LONG PLUG/SLD WITH (1) 120V, 20A CIRCUIT AND A MINIMUM OF FIVE RECEPTACLES. CENTER THE PLUG/SLD, MOUNT AT 3'-2" AFF, AND CONNECT TO CIRCUIT RP-25. PROVIDE AND INSTALL (1) SINGLE-GANG DATA BOX MOUNTED IN HORIZONTAL CONFIGURATION WITH 3/4" STUB UP. MOUNT DATA DEVICE AT 3'-5" AFF.
- WATER HEATER - UNIT IS 120V, 20A, 1 1/2" C, (2) #10 & (2) #10 GROUND TO PANEL "RP". CIRCUIT 30. PROVIDE LOCKABLE CIRC. BREAKER. COORDINATE ACTUAL LOCATION WITH PLUMBING.
- THE QUAD RECEPTACLE DOWN IS AN ACTUAL SIZE OF TWO DUPLEX RECEPTACLES WITH THE TWO CIRCUITS SHOWN. MOUNT RECEPTACLE AT 18" AFF. LOCATE OUTLET NEXT TO LOCKERS. COORDINATE LOCATION WITH FIXTURES PLAN.
- THE ELECTRIC HAND DRYER ON EACH TOILET ARE PROVIDED BY OWNER/DEVELOPER AS PART OF THE RESTROOM-IN-A-BOX PACKAGE AND ARE TO BE CONNECTED BY THE ELECTRICAL CONTRACTOR TO VULC CIRCUITS RP-18 & RP-20.
- INSTALL 3" CONDUIT FROM TELEPHONE UTILITY INTERFACE AT PROPERTY LINE TO TELEPHONE BACKBOARD (TEB). COORDINATE INTERFACE POINT WITH LOCAL TELEPHONE UTILITY.
- INSTALL AND/OR CONNECT UP/GFCI RECEPTACLE AT HVAC UNIT AS REQUIRED. CONNECT TO CIRCUIT RP-11. UNIT MAY BE SUPPLIED WITH UN-WIRED RECEPTACLE BUILT-IN.
- POWER POLES ARE PROVIDED BY OWNER/DEVELOPER FOR INSTALLATION BY ELECTRICAL CONTRACTOR AND SHALL INCLUDE EITHER ARRANGEMENT 'A' OR 'B' AS NOTED ON THE PLANS.
 A. ONE ISOLATED DEDICATED CIRCUIT, ONE STANDARD RECEPTACLE CIRCUIT, & ONE TELEPHONE CIRCUIT
 B. ONE ISOLATED DEDICATED CIRCUIT & ONE STANDARD RECEPTACLE CIRCUIT

ELECTRICAL LEGEND

- | | |
|--|--|
| EM& ENERGY MANAGEMENT SYSTEM | ● BELL, 4" DIAMETER SINGLE MAGNET VERTICALLY TYPE 34 VAC, 30 VA EDWARDS # 55-608. MOUNT ABOVE CEILING. |
| ⊙ CEILING RECEPTACLE, 120V, 20A | ⊙ FIRE ALARM FULL STATION |
| ⊙ DUPLEX RECEPTACLE, 120V, 20A | ⊙ FIRE ALARM REMOTE ANNUNCIATOR |
| ⊙ DUPLEX RECEPTACLE, 20A, 125 VOLT, WITH ISOLATED GROUND, HUBBLE #G-5262 | ⊙ WALL MOUNTED FIRE ALARM HORN/STROBE (BOTTOM AT 80" AFF) |
| GFI ⊙ DUPLEX RECEPTACLE, 120V, 20A, GROUND FAULT INTERRUPT CIRCUIT | ⊙ CEILING MOUNTED FIRE ALARM HORN/STROBE |
| UP ⊙ DUPLEX RECEPTACLE, 120V, 20A, GROUND FAULT INTERRUPT CIRCUIT WITH WEATHERPROOF COVER | ⊙ WALL MOUNTED FIRE ALARM STROBE (BOTTOM AT 80" AFF) |
| SW ⊙ DUPLEX RECEPTACLE, 120V, 20A, ABOVE WINDOW IN WALL OR IN CEILING, BUT WITHIN 12" OF TOP OF WINDOW | ⊙ DUCT SMOKE DETECTOR |
| ⊙ JUNCTION BOX | ⊙ FIRE ALARM SMOKE DETECTOR |
| ⊙ PUSHBUTTON MOUNT 4" AFF UNLESS OTHERWISE NOTED. | → HOME RUN ARROWHEAD - NUMBER OF ARROWHEADS INDICATES NUMBER OF CIRCUITS. |
| BT ⊙ SIGNAL TRANSFORMER MOUNT 9'-0" AFF IN STOCKROOM | ⊙ TURN-LOCK FLUSH RECEPTACLE: 20A, 125 VOLT, MOUNT 6" AFF. |
| ▲ TELEPHONE OUTLET: PROVIDE AND INSTALL ALL NECESSARY CONDUIT, CABLE, DEVICE BOXES AND PLATES, RUN TO BACKBOARD, CONNECTION BY OWNER/DEVELOPER'S CONTRACTOR. COORDINATE LOCATION WITH OWNER/DEVELOPER. | ⊙ QUADREPLEX RECEPTACLE |

2 DOOR CHIME SCHEMATIC DIAGRAM
 E-1 SCALE: NONE



OFFICE ELEVATION - ELECTRICAL & DATA
 SCALE: 1/4" = 1'-0"

Order Plans @

POWER PLAN
 SCALE: 1/8" = 1'-0"
 NORTH

	REV. DATE	DESCRIPTION	
	07/10/17	DRN CHK	
3901 SPRING HILL AVENUE MOBILE, ALABAMA 36688 (251) 344-7972 / FAX (251) 345-9179			POWER PLAN
DOCUMENT CONTROL			PROJ. NO. 605617 DWG. NO. E-1.1