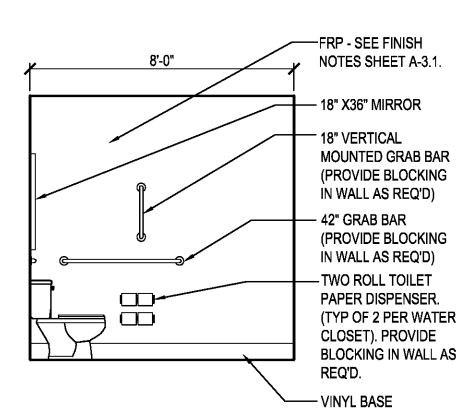
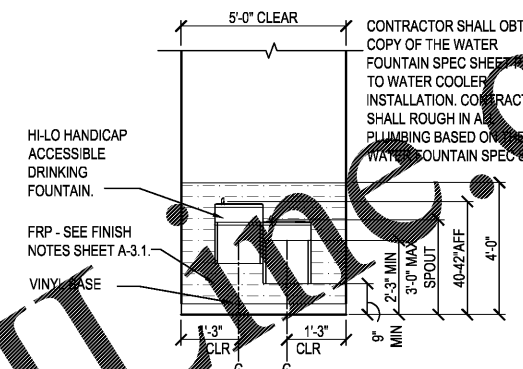


A TOILET ELEVATION
A-2.4 SCALE: 3/8" = 1'-0"

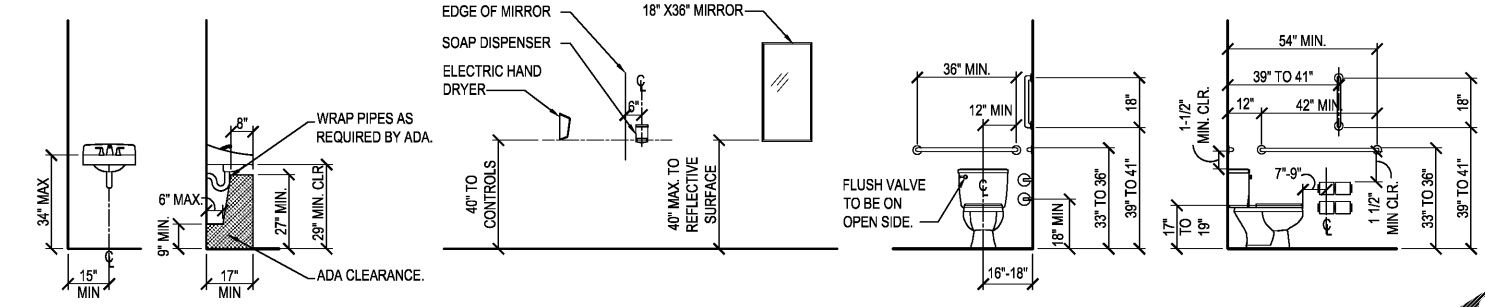


B TOILET ELEVATION
A-2.4 SCALE: 3/8" = 1'-0"

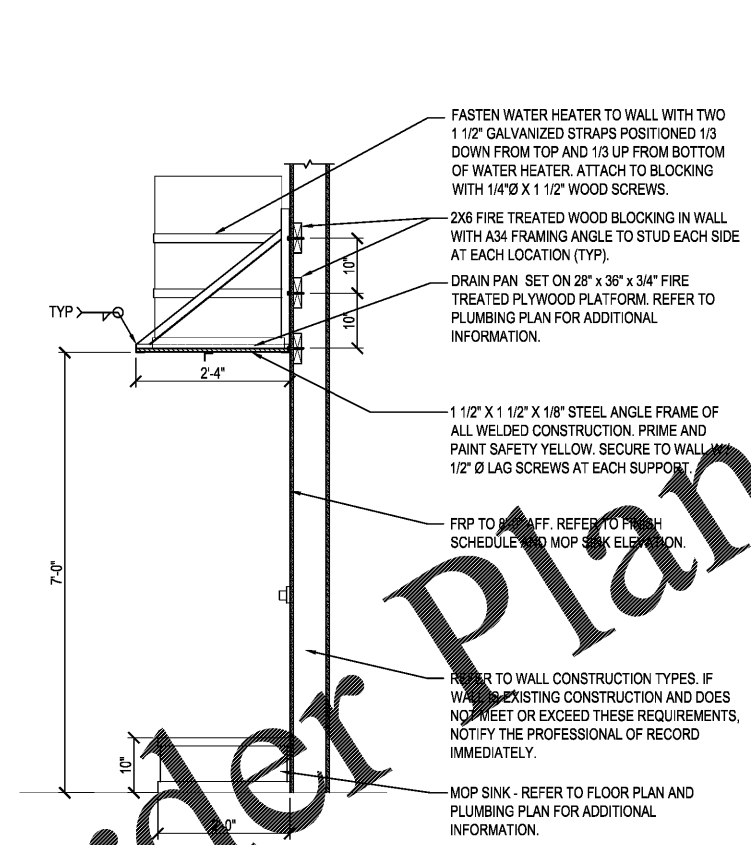
NOTE:
TOILET ACCESSORIES ARE DOLLAR TREE SUPPLIED - INCLUDING GRAB BARS, TOILET PAPER DISPENSER, MIRROR, HAND DRYER, AND SLATWALL.
THE ELECTRIC HAND DRYER WILL NOT EXTEND MORE THAN 4" FROM THE WALL ON WHICH IT IS MOUNTED UNLESS IT HAS A LEADING EDGE AT OR BELOW 27" ABOVE FINISHED FLOOR.
FLUSH CONTROLS SHALL BE LOCATED ON THE OPEN SIDE OF THE WATER CLOSET.
CONTRACTOR SHALL COMPLY WITH PLANS AND HANDICAPPED CODES AND LAWS. CONTRACTOR SHALL VERIFY COMPLIANCE TO FLOOR PLAN, ENLARGED PLANS AND ELEVATIONS THIS SET. NOTIFY CONSTRUCTION PM WITH ANY DISCREPANCIES.



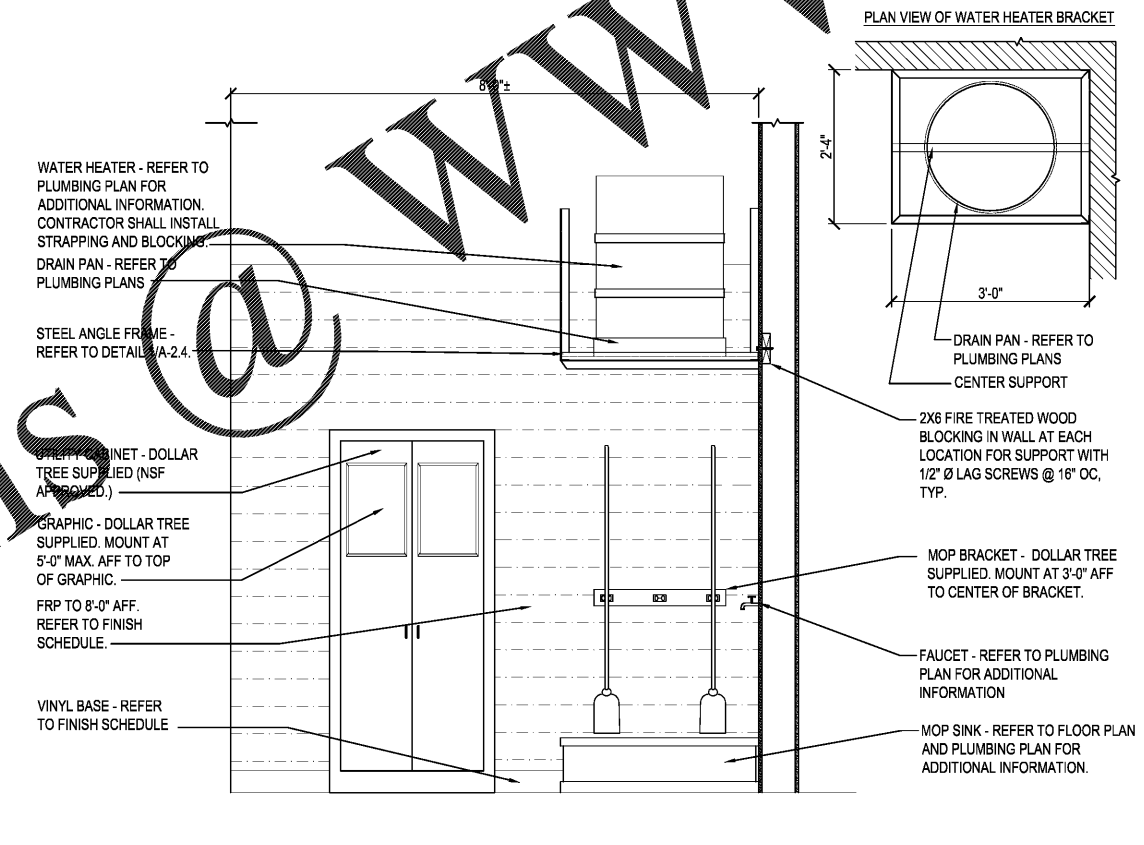
DRINKING FOUNTAIN ELEVATION
A-2.4 SCALE: 3/8" = 1'-0"



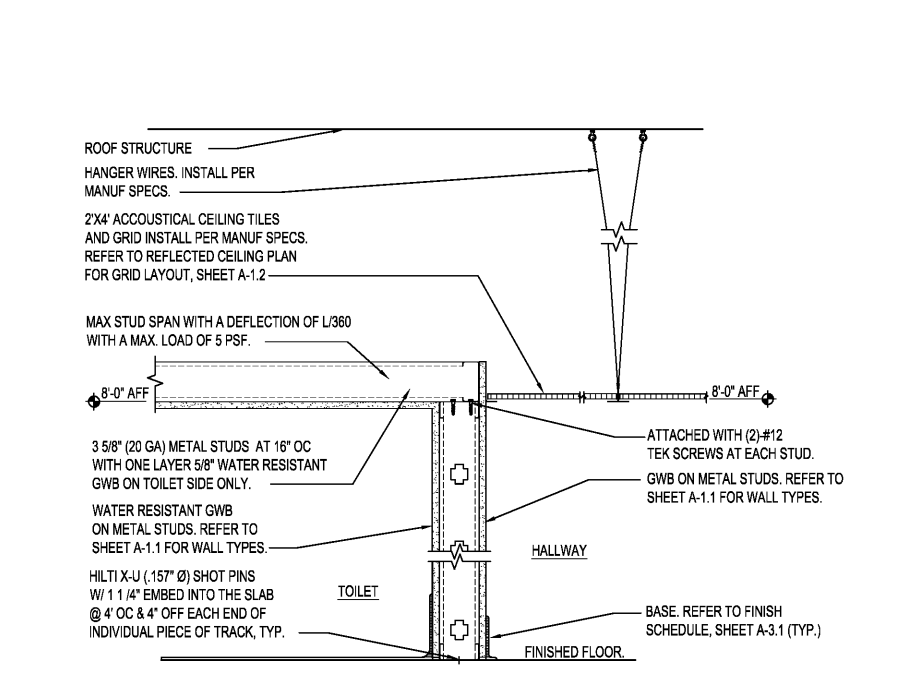
C TYPICAL ACCESSIBILITY CLEARANCES
A-2.4 SCALE: 3/8" = 1'-0"



D WATER HEATER MOUNTING DETAIL
A-2.4 SCALE: 3/4" = 1'-0"



E MOP SINK AND UTILITY CABINET ELEVATION
A-2.4 SCALE: 3/4" = 1'-0"



2 CEILING DETAIL @ TOILET / HALLWAY
A-2.4 SCALE: 1 1/2" = 1'-0"

Order Plans

	COLUMBUS, GA TOILET ROOM DETAILS & ELEVATIONS	
	PROJ. NO. 17138-73	DWG. NO. A-2.4

REV.	DATE	BY	CHK	DESCRIPTION

	3801 SPRING HILL AVENUE MOBILE, ALABAMA 36608 (251) 344-7073 / FAX (251) 345-9179
--	---