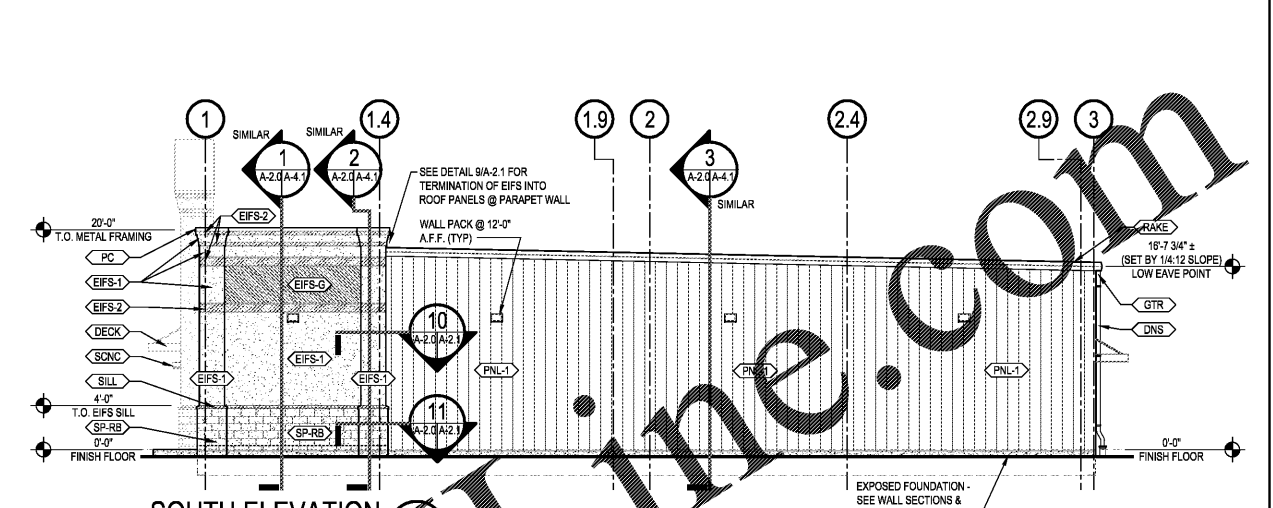
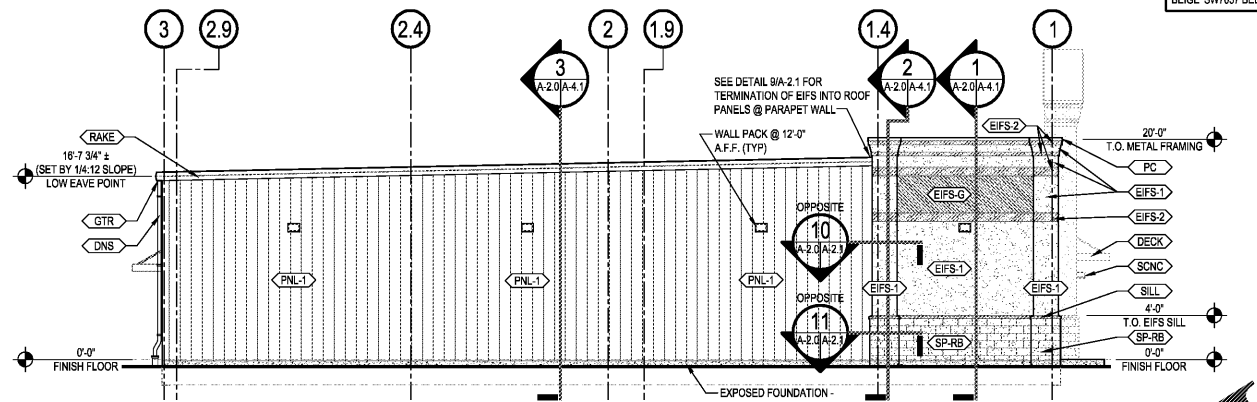


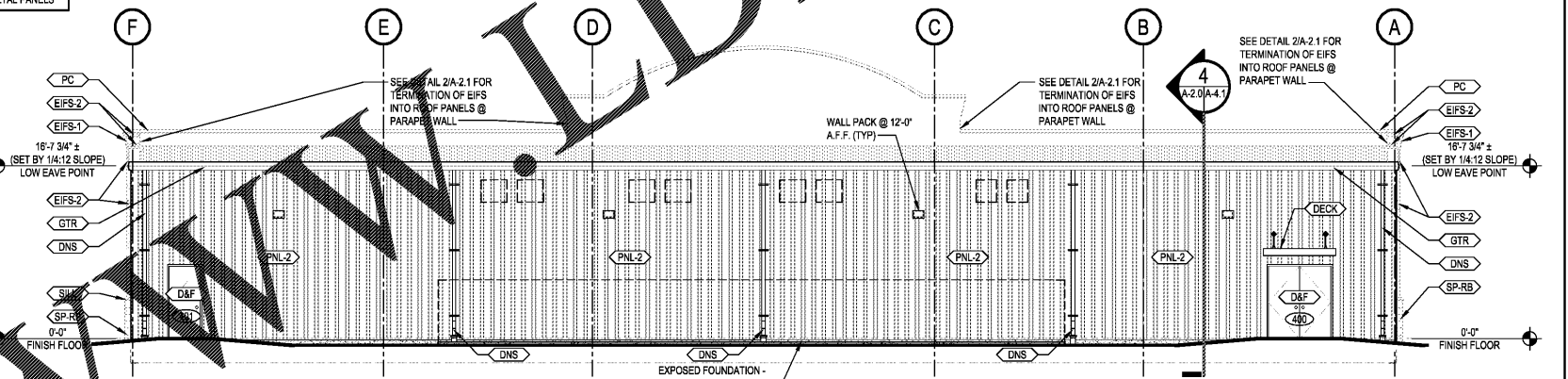
WEST ELEVATION
SCALE: 1/8"=1'-0"
A-2.0



SOUTH ELEVATION
SCALE: 1/8"=1'-0"
A-2.0



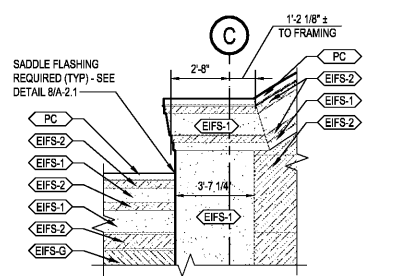
NORTH ELEVATION
SCALE: 1/8"=1'-0"
A-2.0



EAST ELEVATION
SCALE: 1/8"=1'-0"
A-2.0

ELEVATION LEGEND

KEYNOTE	HATCH	DESCRIPTION	COLOR
SP-RB	[Hatch]	SPLIT FACED CMU VENEER - RUNNING BOND	SHERWIN WILLIAMS - 'VIRTUAL TAUPE' - SW7039
EIFS-1	[Hatch]	EIFS - COLOR 1 (FINISH - PRODUCT STO 310)	STO 'SANDSTONE' 93860 (NA10-0052)
EIFS-2	[Hatch]	EIFS - COLOR 2 (FINISH - PRODUCT STO 310)	STO 'SMOKED PUTTY' 93240 (NA10-0053)
EIFS-G	[Hatch]	EIFS - ACCENT COLOR (FINISH - PRODUCT STOLIT 1300)	STO 'SILVER' 93925 (NA10-0054)
PNL-1	[Hatch]	1 3/4" 22 GAUGE MBCI DESIGNER SERIES METAL WALL PANEL (PROVIDED BY METAL BUILDING MANF.)	MBCI SIGNATURE 200 - 'LIGHT STONE'
PNL-2	[Hatch]	1 1/8" 28 GAUGE ALUMINUM METAL WALL PANEL (PROVIDED BY METAL BUILDING MANF.)	MBCI SIGNATURE 200 - 'LIGHT STONE'
SILL	[Hatch]	3 3/8" x 3 3/8" EIFS SILL PANEL - SEE DETAIL 7/A-2.0	STO 'SMOKED PUTTY' 93240 (NA10-0053)
RAKE	[Hatch]	MULTIPLY RAKE TRIM (PROVIDED BY METAL BUILDING MANF.)	MBCI SIGNATURE 200 - 'LIGHT STONE'
PC	[Hatch]	2 1/2" KYNAR COATED METAL COPING (PROVIDED BY METAL BUILDING MANF.)	SHERWIN WILLIAMS - 'ENVY' - SW6925
DNS	[Hatch]	GALVANIZED METAL DOWNSPOUT (SIZED & PROVIDED BY METAL BUILDING MANF.)	MBCI SIGNATURE 200 - 'LIGHT STONE'
GTR	[Hatch]	GALVANIZED METAL GUTTER (SIZED & PROVIDED BY METAL BUILDING MANF.)	MBCI SIGNATURE 200 - 'LIGHT STONE'
DECK	[Hatch]	3'-0" METAL DECK CANOPY - HANGER ROD SUPPORTED W/ 8" FASGA - SUPPLIED & INSTALLED BY SIGN VENDOR - GC TO PROVIDE & INSTALL WALL BOLTS (SEE SPECS) (SEE A-1.0 FOR LENGTHS & APPLICABLE DETAILS)	SHERWIN WILLIAMS - 'ENVY' - SW6925
SCNC	[Hatch]	LS1 LED PATRIOT WALL SCENCE @ 8'-8" A.F.F. (SEE ELECTRICAL)	BRZ - 'BRONZE'
D&F	[Hatch]	STEEL DOOR & HOLLOW METAL FRAME	SHERWIN WILLIAMS 'BALANCED BEIGE' SW7037
A	[Symbol]	STOREFRONT TYPE (REFER TO SHEET A-3.0)	PAINTING NOTES: (1) COAT OF S-W LOXON BLOCK SURFACER A24W200 (OR EQUAL). (2) COATS OF S-W COMPLEX XL ELASTOMERIC HIGH BUILD ENCLOSURE COATING, A5-400 SERIES (OR EQUAL)
SD	[Symbol]	DOOR NUMBER (REFER TO SHEET A-3.1)	METAL- (2) COATS OF S-W METALTEX ACRYLIC SEMI-GLOSS (B42 SERIES) LINTELS- PAINT STOREFRONT LINTELS PER 'METAL' NOTE ABOVE WITH SHERWIN WILLIAMS 'BALANCED BEIGE' SW7037 AFTER PRIMING WITH (1) COAT OF S-W PRO INDUSTRIAL PRO-CRYL UNIVERSAL PRIMER (B66-310 SERIES)



ENLARGED ELEVATION
SCALE: 1/4"=1'-0"
A-2.0

NOTES:
1. HVAC ENCLOSURE FENCE NOT SHOWN FOR CLARITY - SEE OUTLINE ABOVE FOR LOCATION & SEE DETAIL 6/T-4
2. HVAC UNITS & DUCTWORK NOT SHOWN FOR CLARITY - SEE OUTLINES ABOVE FOR PENETRATION LOCATIONS
3. MECHANICAL SHROUD SHALL BE PAINTED W/ SHERWIN WILLIAMS 'BALANCED BEIGE' SW7037 AS CALLED FOR IN SPECIFICATIONS

Order Plans @

<p>3801 SPRING HILL AVENUE MOBILE, ALABAMA 36608 (251) 944-7073 / FAX (251) 945-9179</p>	<p>REV. DATE DRN CHK</p>	<p>DESCRIPTION</p>	<p>STATE OF GEORGIA REGISTERED PROFESSIONAL ARCHITECT 1983A G 5947 JAMES G. GIBBS ARCHITECT</p>	<p> DOLLAR TREE</p> <p>COLUMBUS, GA EXTERIOR ELEVATIONS</p>
	<p>8-8-17</p>	<p>LOG</p>	<p>DOCUMENT CONTROL</p>	<p>PROJ. NO. 1605-84 DWG. NO. A-2.0</p>