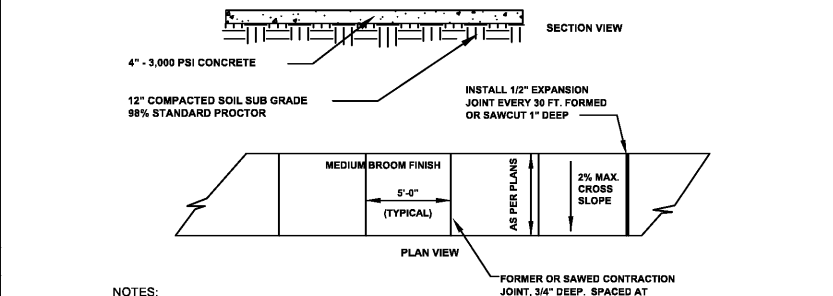
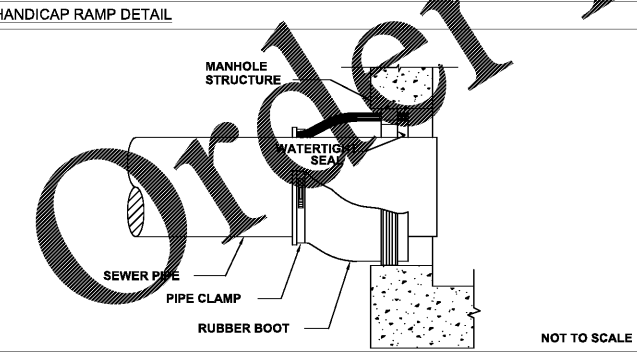
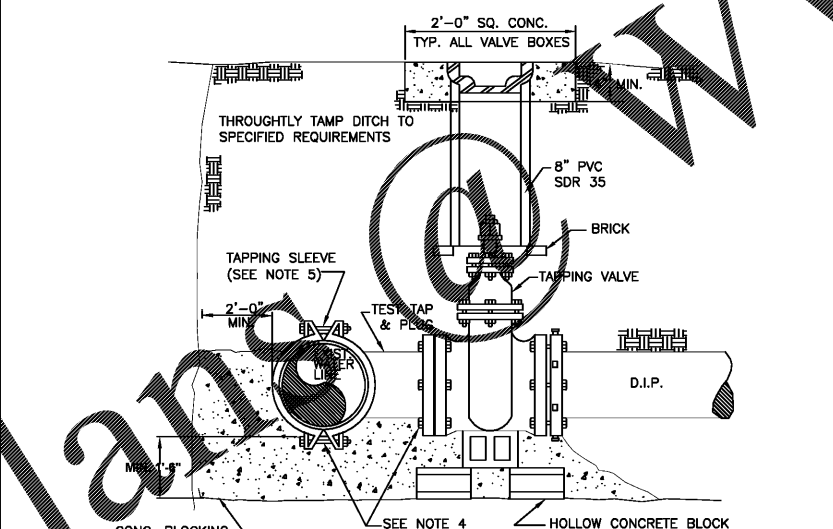


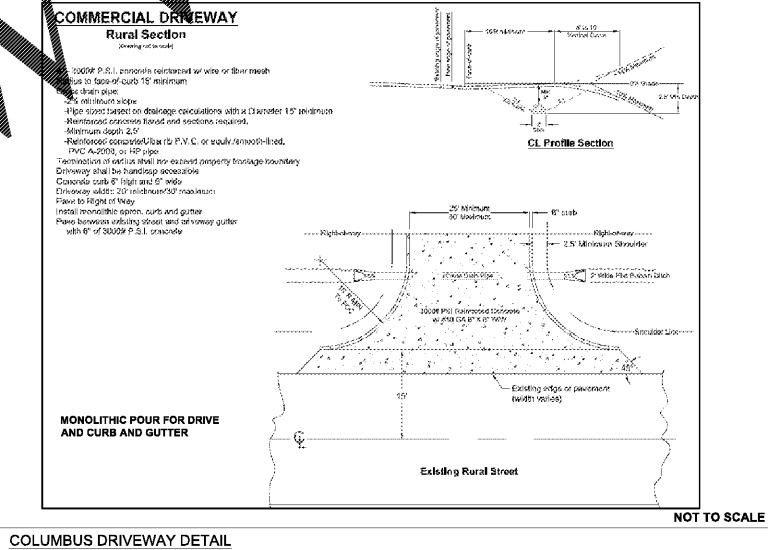
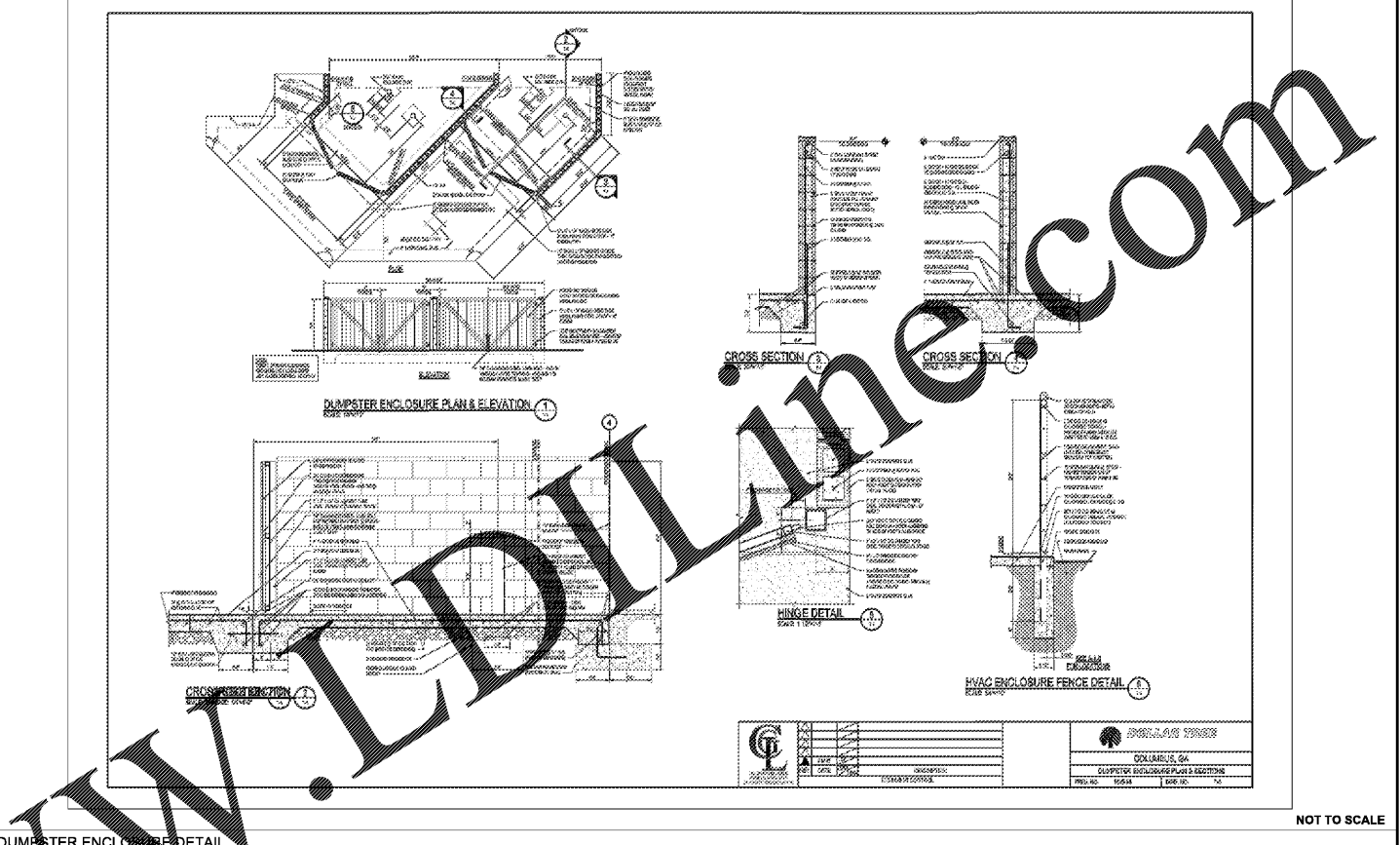
- NOTES:**
- HANDICAP RAMP CONSTRUCTION SHALL CONFORM TO ALL FEDERAL, STATE, AND LOCAL CODES AND SPECIFICATIONS.
 - SURFACES SHALL MEET THE GUIDELINES OF THE ADA STANDARDS FOR ACCESSIBILITY, APPENDIX A, PART 36.
 - THE SLOPE OF THE GUTTER MUST NOT EXCEED 1:20 ADJACENT TO THE RAMP.
 - DETECTABLE WARNING SHALL CONSIST OF RAISED TRUNCATED DOMES WITH A DIAMETER OF NOMINAL 2.35 INCHES, HEIGHT OF NOMINAL 0.2 INCHES AND A CENTER TO CENTER SPACING OF NOMINAL 2.35 INCHES AND SHALL CONTRAST VISUALLY WITH ADJOINING SURFACES. IF THE SIDEWALK AND RAMP ARE CONSTRUCTED OF CONCRETE, THE WARNING AREA SHALL BE RED BRICK IN COLOR. IF THE SIDEWALK AND RAMP ARE CONSTRUCTED OF RED BRICK, THE WARNING AREA SHALL BE GRAY IN COLOR. THE COLOR USED TO PROVIDE CONTRAST SHALL BE AN INTEGRAL PART WALKING SURFACE.
 - BRICK PAVERS SHALL BE SET IN A WET MORTAR BED. THE BED SHALL BE PLACED ON CONCRETE. THE CONCRETE SHALL BE A MINIMUM OF FOUR INCHES THICK.



- NOTES:**
- ALL CONSTRUCTION SHALL CONFORM TO THE COLUMBUS CONSOLIDATED GOVERNMENT SPECIFICATIONS.
 - ADA COMPLIANT HANDICAP RAMPS SHALL BE INSTALLED AT EACH INTERSECTION OR DESIGNATED CROSSWALK LOCATION AND MUST MEET OR EXCEED THE MOST CURRENT ADA STANDARDS AND THE COLUMBUS CONSOLIDATED GOVERNMENT SPECIFICATIONS AT THE TIME OF CONSTRUCTION.
 - CONTRACTOR TO INSTALL 1/2" WIDE AND 1/4" DEEP MOLED JOINT EVERY 5 FEET OR AS SHOWN ON THE PLAN. CONTRACTOR IS TO INSTALL 1/2" PRE-MOLDED EXPANSION JOINT MATERIAL THAT IS TRIM FLUSH WITH CONCRETE TOP EVERY 30' FEET, BETWEEN CONCRETE POURS OR AS SHOWN ON THE PLANS.
 - ALL SIDEWALKS SHALL MEET ADA STANDARDS.



- NOTES:**
- TEMPORARILY SUPPORT TAPPING SADDLE AND VALVE, THEN APPLY STANDARD HYDROSTATIC TEST.
 - IF NO LEAKS, POUR INDICATED PERMANENT CONCRETE BLOCK AND SUPPORT PAD.
 - MAKE TAP, LINE EXTENSION AND BACKFILL.
 - COVER GLAND AND BOLTS WITH HEAVY POLYETHYLENE SHEETING TO KEEP CONCRETE FROM BONDING. TYPICAL WHENEVER BOLTS OR GLAND MAY BE "WRAPPED-UP" IN CONCRETE.
 - COAT TAPPING SLEEVE AND BOLTS WITH AN APPROVED BITUMASTIC COATING BEFORE POURING CONCRETE. TYPICAL FOR ALL STEEL INCLUDING RODS, COUPLINGS, STRAPS AND OTHER BURIED STEEL. SEE NOTE 5, DWG A-25 FOR COATING REQUIREMENTS.



enc CIVIL MARINE ENVIRONMENTAL

DOLLAR TREE

GEORGIA
REGISTERED PROFESSIONAL ENGINEER
08/04/2011
LOEL DAVID WOMACK

REV.	DATE	DRN	CHK	DESCRIPTION

DOCUMENT CONTROL

PROJ. NO. 17-7039 DWG. NO. C-8.0

CONSTRUCTION DETAILS

COLUMBUS, GA

PROJ. NO. 17-7039 DWG. NO. C-8.0