

STANDARD TYPE A-24

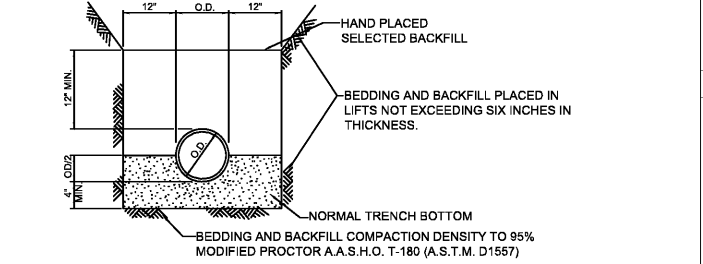
PITCHED TYPE B-24

NOTES:

1. PITCHED GUTTER TO BE USED IN ALL CASES WHERE PAVEMENT IS SLOPED AWAY FROM CURB.
2. CURB AND GUTTER IS TO BE CONSTRUCTED IN 10 FOOT LENGTHS.
3. 1/2" EXPANSION JOINTS SHALL BE PROVIDED AT INTERVALS NOT TO EXCEED 50 FEET AT THE ENDS AND MID POINTS OF RETURNS, AND AT ANY POINT WHERE NEW CURB AND GUTTER ABUT OTHER CONCRETE STRUCTURES.
4. 5' LONG TRANSITIONS SHALL BE PROVIDED BETWEEN NORMAL GUTTER AND PITCHED GUTTER UNLESS OTHERWISE NOTED ON THE PLANS.
5. 30" CURB AND GUTTER TO BE USED IN DOT PAVING SECTIONS.
6. TRANSITION ALL 30" CURB AND GUTTER TO 24" INSIDE RADII OF TURNS.

NOT TO SCALE

24" REGULAR CURB AND GUTTER

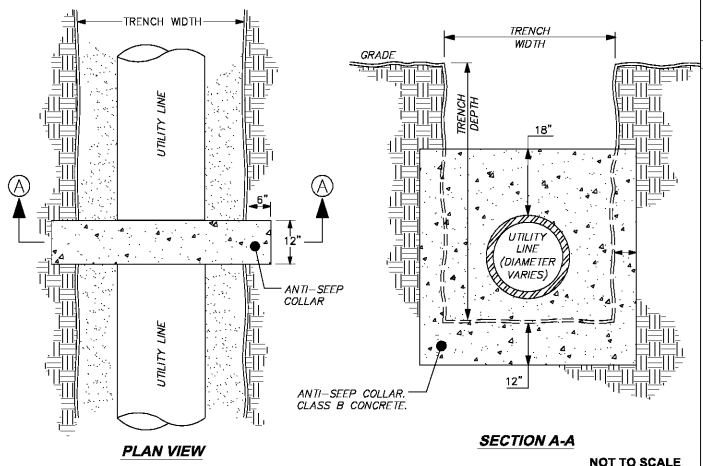


NOTES:

1. ALL BEDDING FOR PVC GRAVITY SEWER PIPE WILL BE IN COMPLIANCE WITH (A.S.T.M. D2321-74).
2. NORMALLY CLEAN BACKFILL SHALL BE AS A 6" MIN. BEDDING. HOWEVER, WHERE UNSTABLE TRENCH BOTTOM CONDITIONS ARE ENCOUNTERED, AS DETERMINED BY THE INSPECTING ENGINEER A SUFFICIENT DEPTH OF THE UNSTABLE SOIL SHALL BE REMOVED AND REPLACED WITH 1/4" - 3/4" CRUSHED STONE, GRAVEL (U.S.C.S SOIL CLASSIFICATION - CLASS ONE) OR CRUSHED SHELL TO THE SPRING LINE OF THE PIPE TO STABILIZE THE PIPE BEDDING. WHEN DRY UNSUITABLE MATERIAL (IE. HARDPAN) IS ENCOUNTERED AT THE TRENCH BOTTOM, GRADED SANDS MAY BE USED FOR PIPE BEDDING.

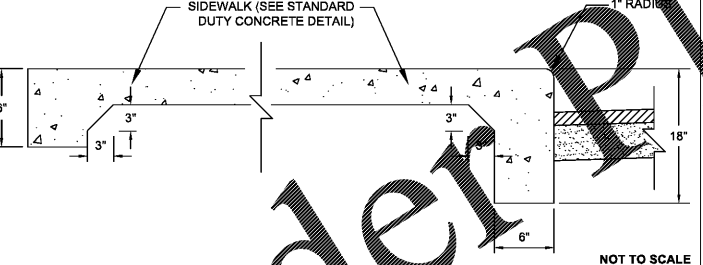
NOT TO SCALE

SANITARY SEWER PIPE BEDDING DETAIL



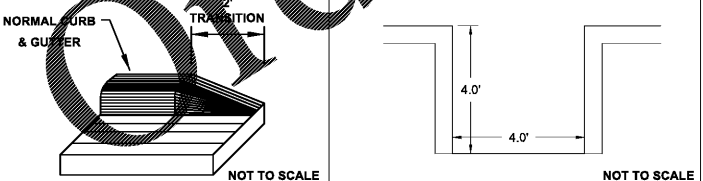
NOT TO SCALE

ANTISEEP COLLAR DETAIL



NOT TO SCALE

INTEGRAL CURB & SIDEWALK DETAIL

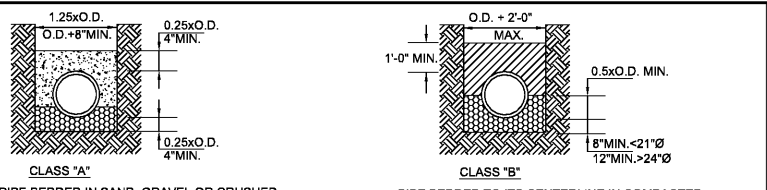


NOT TO SCALE

CURB AND GUTTER TRANSITION TO GRADE



NOT TO SCALE



CLASS "A"

CLASS "B"

PIPE BEDDED IN SAND, GRAVEL OR CRUSHED STONE TO A DEPTH OF 1/4 PIPE DIAMETER OR 4" MINIMUM 4" MINIMUM. PLACE 1500 PSI (MIN.) CONCRETE TO 1/4 OF PIPE DIAMETER ABOVE PIPE INVERT TO 6" ABOVE TOP OF PIPE.

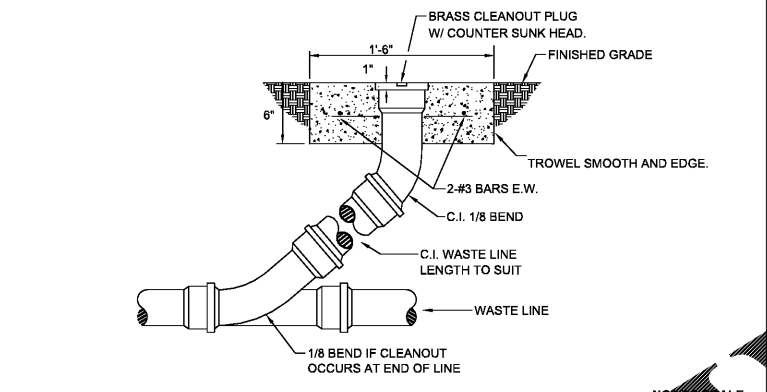
PIPE BEDDED TO ITS CENTERLINE IN COMPACTED GRANULAR MATERIAL, 4" MINIMUM UNDER PIPE. COMPACTED GRANULAR OR SELECT MATERIAL ** TO 1'-0" ABOVE TOP OF PIPE. (APPROXIMATELY 90% STANDARD PROCTOR, AASHTO T-99.)

PIPE BEDDING DETAIL

NOTE: ** "LOOSE SOIL" OR "SELECT MATERIAL" IS DEFINED AS NATIVE SOIL EXCAVATED FROM THE TRENCH, FREE OF ROCKS, FOREIGN MATERIAL AND FROZEN EARTH.

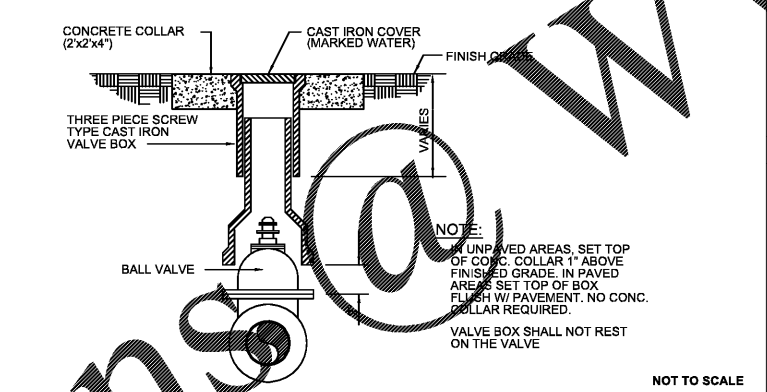
NOT TO SCALE

PIPE BEDDING DETAIL



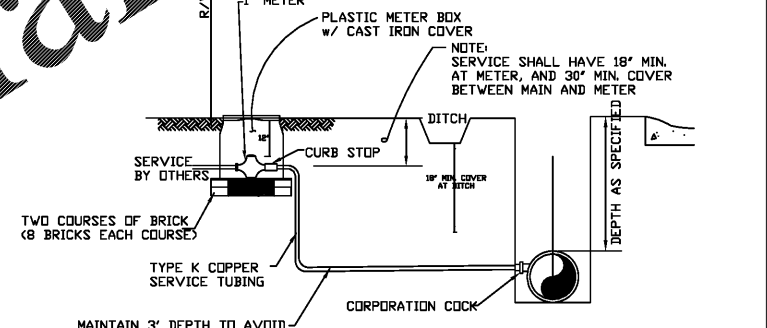
NOT TO SCALE

CLEAN OUT DETAIL



NOT TO SCALE

VALVE BOX DETAIL

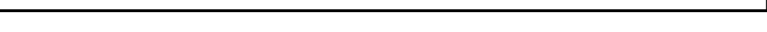


NOTES:

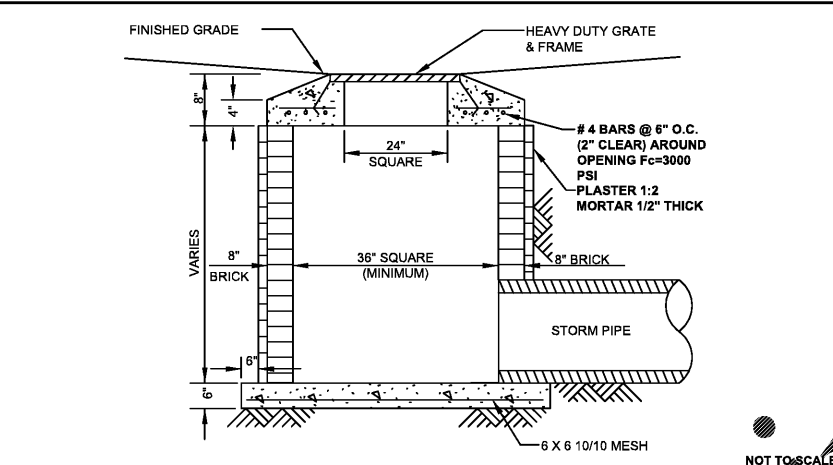
1. SERVICE LINE SHALL BE 1' FROM MAIN TO METER
2. USE ALL FLARE JOINTS
3. INSTALLATION SHALL ALLOW ADEQUATE ROOM TO REMOVE AND/OR REPAIR METER
4. METER BOX SHALL BE APPROXIMATELY 18" x 24"
5. TYPE K COPPER SERVICE LINE MUST BE CONTINUOUS FROM METER TO MAIN
6. NEW WATER MAIN SUBJECT TO 250LB PRESSURE TEST FOR TWO HOURS.

NOT TO SCALE

1" WATER METER INSTALLATION DETAIL

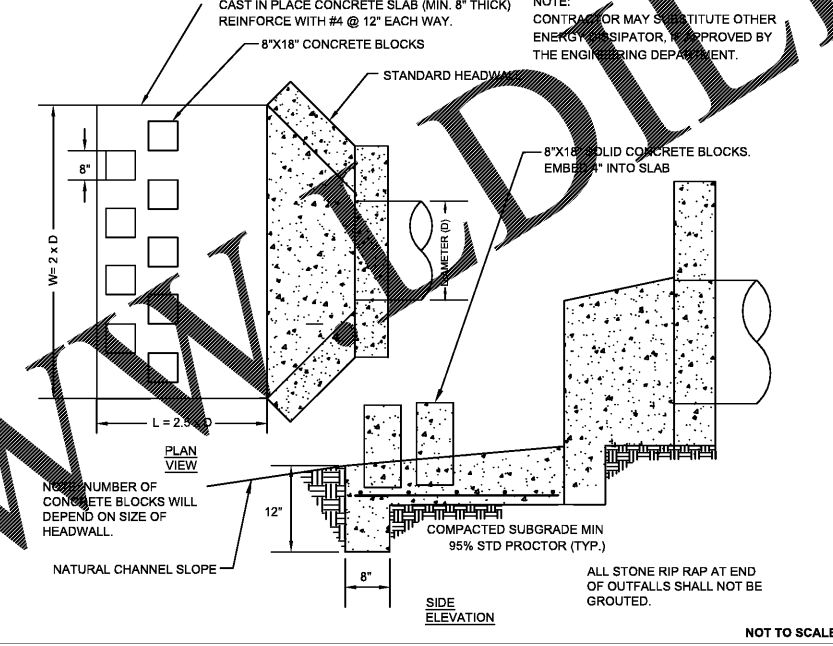


NOT TO SCALE



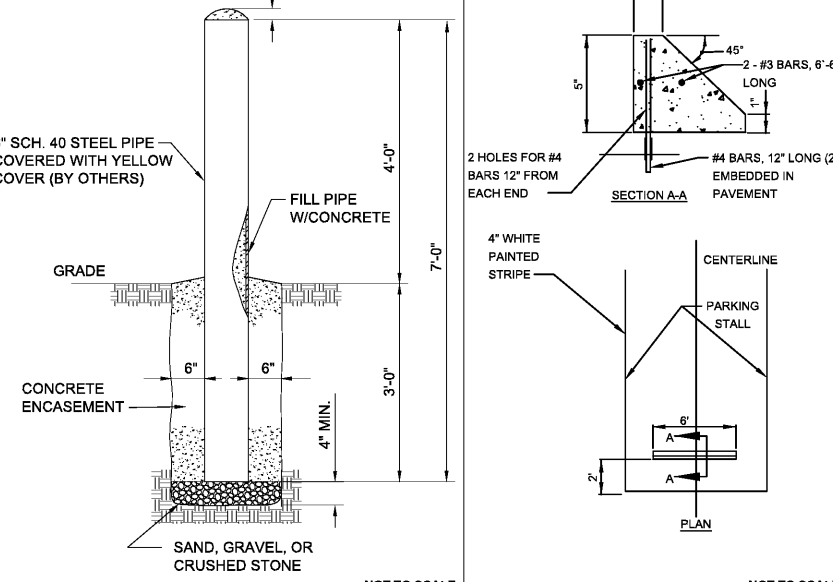
NOT TO SCALE

GRATE INLET DETAIL



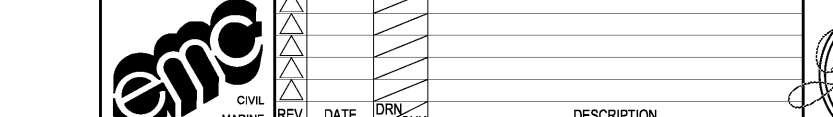
NOT TO SCALE

ENERGY DISSIPATING HEADWALL



NOT TO SCALE

BOLLARD DETAIL

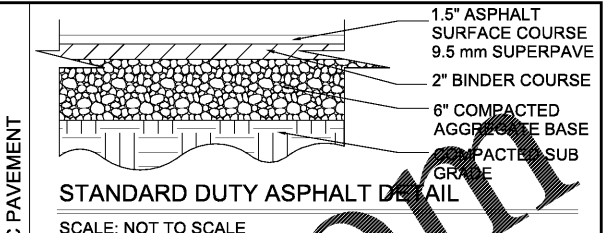


NOT TO SCALE

WHEEL STOP DETAIL

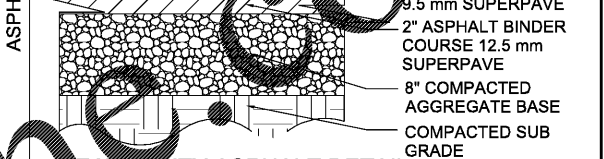


NOT TO SCALE



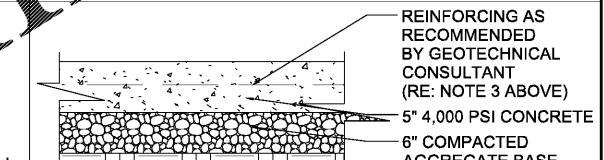
NOT TO SCALE

STANDARD DUTY ASPHALT DETAIL



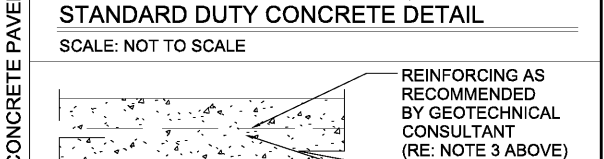
NOT TO SCALE

HEAVY DUTY ASPHALT DETAIL



NOT TO SCALE

STANDARD DUTY CONCRETE DETAIL



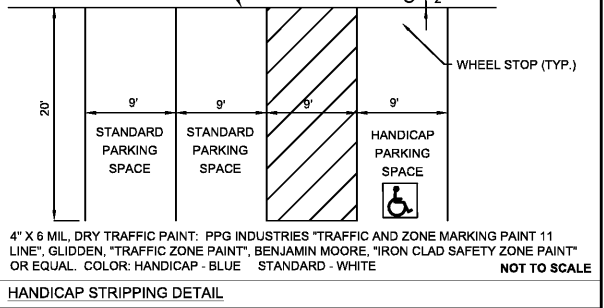
NOT TO SCALE

HEAVY DUTY CONCRETE DETAIL



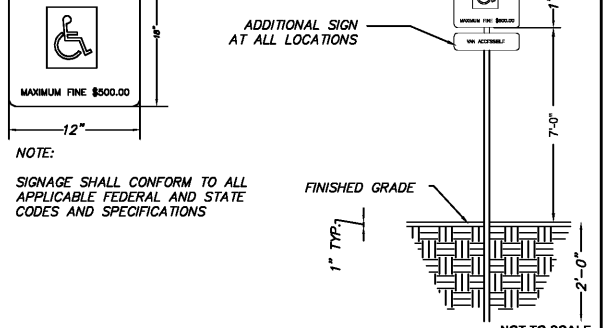
NOT TO SCALE

PARKING STALL STRIPING



NOT TO SCALE

HANDICAP STRIPING DETAIL



NOT TO SCALE

HANDICAP SIGN DETAIL

enc CIVIL MARINE ENVIRONMENTAL

REV. DATE DRN. CHK. DESCRIPTION

DOCUMENT CONTROL

GEORGIA PROFESSIONAL ENGINEER LICENSE NO. 2020141 EXPIRES 06/04/2017 JUEL DAVID WOMACK

DOLLAR TREE

COLUMBUS, GA

CONSTRUCTION DETAILS

PROJ. NO. 17-7039 DWG. NO. C-7.0