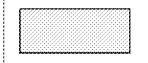
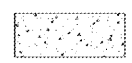


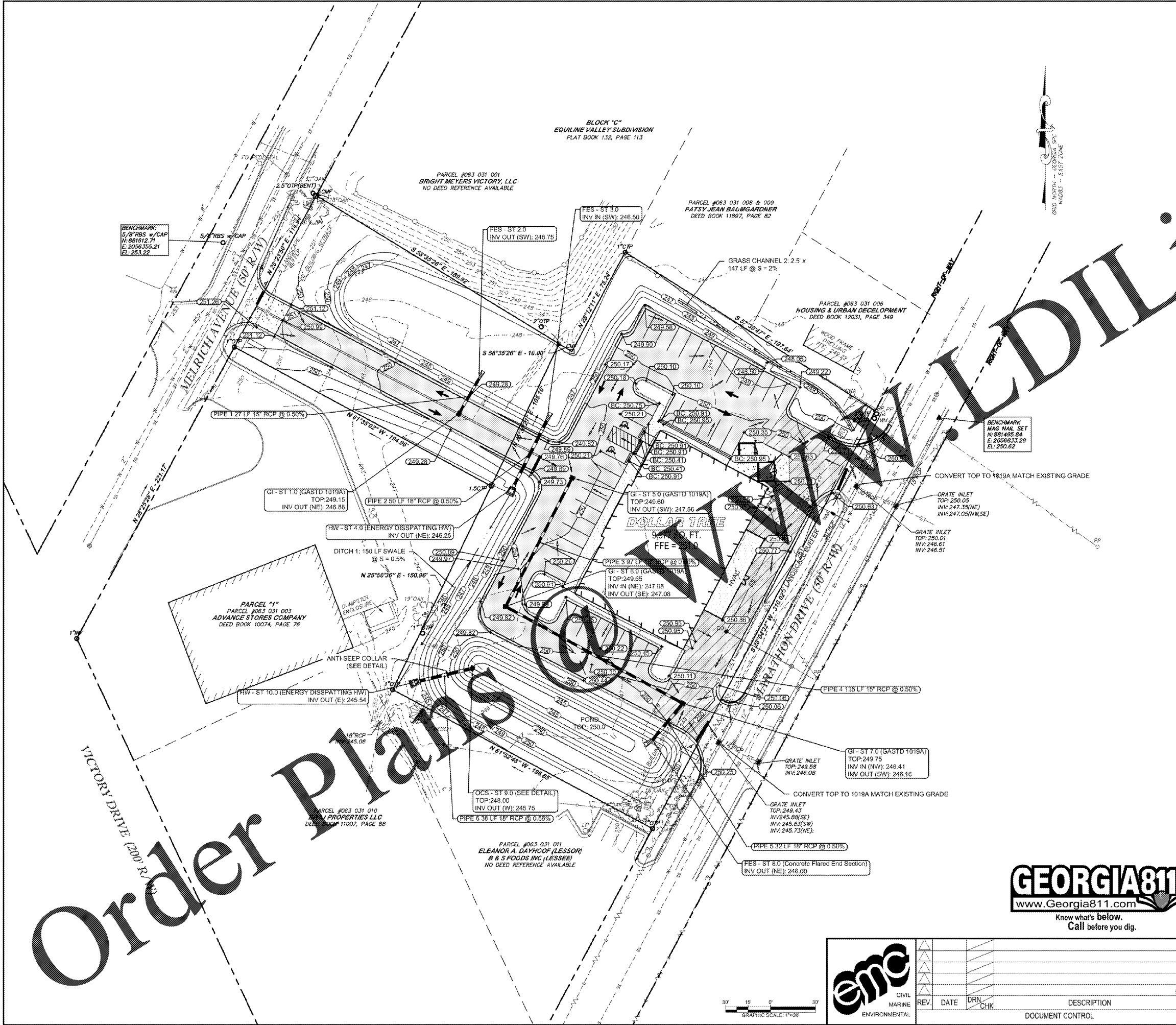


- PAVING, GRADING, AND DRAINAGE NOTES:**
- ENTIRE SITE SHALL BE DRESSED TO UNIFORM, WELL DRAINED AND VISUALLY APPEALING SURFACE WITH A MINIMUM TOPSOIL LAYER OF FOUR INCHES.
  - MAXIMUM LONGITUDINAL SLOPE ON ALL ACCESSIBLE SIDEWALK SHALL BE 5.00%. MAXIMUM SIDEWALK CROSS SLOPE IS 2%. MAXIMUM SIDEWALK LONGITUDINAL SLOPE IS 5%. MAXIMUM PAVEMENT SLOPE IN HANDICAP PARKING AREA AND ALLEYS SHALL BE 5%. MAXIMUM HANDICAP RAMP SLOPE IS 12H:1V.
  - IT SHALL BE THE CONTRACTOR'S RESPONSIBILITY TO ENSURE THE SITE IS ADA ACCESSIBLE AS REQUIRED BY FEDERAL, STATE AND LOCAL GOVERNMENT.
  - FINISH GRADE ELEVATIONS INDICATE TOP OF PAVEMENT UNLESS OTHERWISE NOTED.
  - REFER TO DETAILS FOR PAVEMENT TYPICAL SECTION.
  - SITE SHALL BE GRADED UNIFORMLY FOR POSITIVE DRAINAGE AS SHOWN FROM THE ELEVATIONS, PROPOSED CONTOURS, AND THE DRAINAGE SLOPE ARROWS.

- UTILITY NOTES:**
- THE LOCATION OF ALL EXISTING UNDERGROUND UTILITIES AS SHOWN HEREON ARE BASED ON ABOVE-GROUND STRUCTURES AND IS APPROXIMATE AND SHOWN FOR INFORMATIONAL PURPOSES ONLY. NO CERTIFICATION IS MADE AS TO THE ACCURACY OR COMPLETENESS OF THIS INFORMATION.
  - ADDITIONAL BURIED UTILITIES / STRUCTURES MAY BE ENCOUNTERED. NO EXCAVATIONS WERE MADE DURING THE PROGRESS OF THIS SURVEY TO LOCATE BURIED UTILITIES / STRUCTURES.
  - BEFORE EXCAVATIONS ARE BEGUN, GIVE THREE WORKING DAYS NOTICE TO THE UTILITIES PROTECTION CENTER AT 1-800-282-7411 PRIOR TO ANY EXCAVATION IN ORDER THAT UNDERGROUND UTILITIES MAY BE LOCATED AND PROTECTED.

**HATCH LEGEND:**

	LIGHT DUTY PAVEMENT		CONCRETE PAVEMENT
	HEAVY DUTY PAVEMENT		CONCRETE SIDEWALK



Order Plans



<b>enc</b> CIVIL MARINE ENVIRONMENTAL	REV.	DATE	DRN CHK	DESCRIPTION
DOCUMENT CONTROL				



**DOLLAR TREE**

COLUMBUS, GA

**PAVING, GRADING, & DRAINAGE PLAN**

PROJ. NO. 17-7039      DWG. NO. C-5-0

