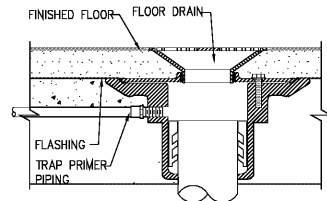
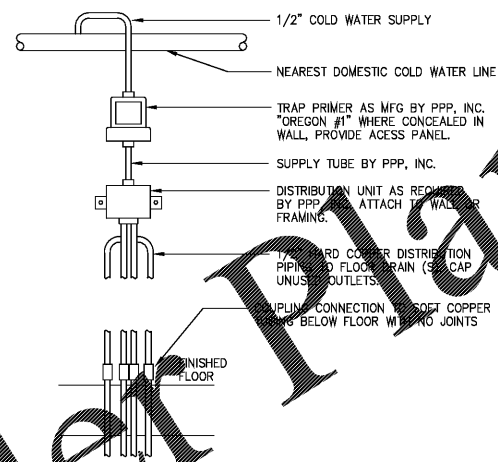


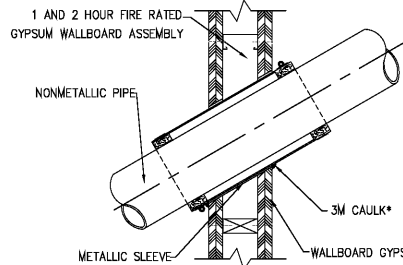
LAVATORY CARRIER
NOT TO SCALE



TRAP PRIMER CONNECTION DETAIL
NOT TO SCALE



TRAP PRIMER DETAIL (OPTION 1)
NOT TO SCALE



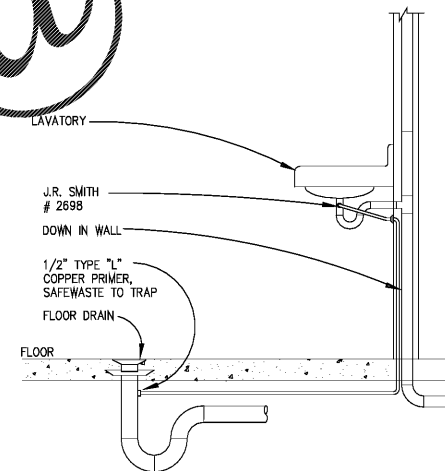
1 AND 2 HOUR FIRE RATED PENETRATION FOR PLASTIC PIPE
NOT TO SCALE

1. WALL ASSEMBLY - THE FIRE RATED GYPSUM WALLBOARD / STUD WALL ASSEMBLY SHALL BE CONSTRUCTED OF THE MATERIALS AND IN THE MANNER SPECIFIED IN THE INDIVIDUAL U300 OR U400 SERIES WALL AND PARTITION DESIGNS IN THE UL FIRE RESISTANCE DIRECTORY AND SHALL INCLUDE THE FOLLOWING CONSTRUCTION FEATURES:
A. STUDS - WALL FRAMING MAY CONSIST OF EITHER WOOD STUDS OR STEEL CHANNEL STUDS. WOOD STUDS TO CONSIST OF NOM 2 BY 4 IN. LUMBER SPACED 16 IN. OG. STEEL STUDS TO BE MM 3-1/2 IN. WIDE AND SPACED MAX. 24 IN. OG.
B. WALLBOARD GYPSUM* - THICKNESS, TYPE, NUMBER OF LAYERS AND FASTENERS AS REQUIRED IN THE INDIVIDUAL WALL AND PARTITION DESIGN. DIAM OF OPENING IS MAX. 1/2 IN. LARGER THAN THE OUTSIDE DIAM OF STEEL SLEEVE (ITEM 3A). THE HOURLY F RATING OF THE FIRESTOP SYSTEM IS EQUAL TO THE HOURLY FIRE RATING OF THE WALL ASSEMBLY IN WHICH IT IS INSTALLED. THE T RATINGS ARE 0 AND 1/2 HR WHEN INSTALLED IN 1 HR AND 2 HR RATED WALLS, RESPECTIVELY.

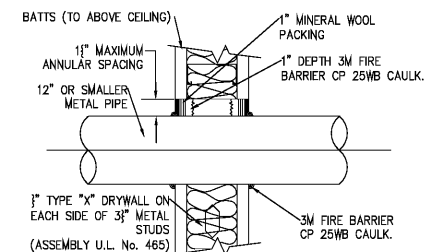
2. THROUGH PENETRANTS - ONE NONMETALLIC PIPE OR CONDUIT TO BE CENTERED WITHIN THE FIRESTOP SYSTEM. PIPE OR CONDUIT TO BE RIGIDLY SUPPORTED ON BOTH SIDES OF FLOOR OR WALL ASSEMBLY. THE PIPE OR CONDUIT MAY BE INSTALLED AT AN ANGLE NOT GREATER THAN 45 DEGREES FROM PERPENDICULAR. THE FOLLOWING TYPES AND SIZES OF NONMETALLIC PIPES OR CONDUITS MAY BE USED:
A. NOM 4 IN. DIAM (OR SMALLER) SCHEDULE 40 SOLID CORE OR CELLULAR CORE POLYVINYL CHLORIDE (PVC) PIPE.
B. NOM 4 IN. DIAM (OR SMALLER) SDR17 CHLORINATED POLYVINYL CHLORIDE (PVC) PIPE.
C. NOM 4 IN. DIAM (OR SMALLER) SCHEDULE 40 (OR HEAVIER) SOLID CORE OR CELLULAR CORE ACRYLONITRILE BUTADIENE STYRENE (ABS) PIPE.

3. FIRESTOP SYSTEM - THE FIRESTOP SYSTEM SHALL CONSIST OF THE FOLLOWING:
A. METALLIC SLEEVE - CYLINDRICAL SLEEVE FABRICATED FROM MM 0.019 IN. THICK (26 GAUGE) GALV SHEET STEEL AND HAVING A MM 1 IN. LAP ALONG THE LONGITUDINAL SEAM. SLEEVE TO EXTEND A MM OF 2 IN. BEYOND BOTH SIDES OF THE WALL. THE INSIDE DIAM OF THE SLEEVE SHALL BE LARGER THAN OUTSIDE DIAM OF NONMETALLIC PIPE OR CONDUIT SUCH THAT AN ANNULAR SPACE WILL BE PRESENT BETWEEN THE STEEL SLEEVE AND THE PIPE AROUND THE ENTIRE CIRCUMFERENCE OF THE PIPE TO ACCOMMODATE THE LAYER(S) OF WRAP STRIPS (ITEM 3B). THE ANNULAR SPACE BETWEEN THE OUTSIDE OF THE WRAP STRIP LAYER(S) AND THE INSIDE OF THE SLEEVE SHALL BE MIN. 0 IN. TO MAX. 1/4 IN. THE ANNULAR SPACE BETWEEN THE OUTSIDE OF THE SLEEVE AND THE PERIPHERY OF THE OPENING SHALL BE MIN. 0 IN. TO MAX. 1/2 IN.
B. FILL VOID OR CAVITY MATERIALS* - WRAP STRIP - NOM 1/4 IN. THICK INTUMESCENT ELASTOMERIC MATERIAL FACED ON ONE SIDE WITH ALUMINUM FOIL, SUPPLIED IN 2 IN. WIDE STRIPS. NOM 2 IN. WIDE STRIPS TIGHTLY WRAPPED AROUND NONMETALLIC PIPE (FOIL SIDE EXPOSED) AND SLID INTO SLEEVE ON BOTH SIDES OF WALL SUCH THAT THE OUTER EDGES OF WRAP STRIPS ARE FLUSH WITH THE OUTER EDGES OF THE SLEEVE. FOR NOM 1/2 IN. TO NOM 1-1/2 IN. DIAM PIPES, A MIN. OF ONE LAYER OF WRAP STRIP IS REQUIRED. FOR NOM 2, 2-1/2 IN. AND 3 IN. DIAM PIPES, A MIN. OF TWO LAYERS OF WRAP STRIP IS REQUIRED. FOR NOM 3-1/2 IN. AND 4 IN. DIAM PIPES, A MIN. OF THREE LAYERS OF WRAP STRIP IS REQUIRED. EACH LAYER OF WRAP STRIP TO BE INSTALLED WITH BUTTED SEAM WITH BUTTED SEAMS IN SUCCESSIVE LAYERS STAGGERED. WRAP STRIP LAYERS HELD IN POSITION USING ALUMINUM FOIL TAPE. STEEL SLEEVE TO BE TIED TO WALL ASSEMBLY WITH A MIN. 1/2 IN. WIDE STAINLESS STEEL HOSE CLAMP SHALL BE INSTALLED AROUND THE OUTSIDE OF THE SLEEVE OVER THE CENTER OF THE WRAP STRIPS AT BOTH ENDS OF THE SLEEVE.
C. FILL VOID OR CAVITY MATERIALS* - CAULK - MIN. THICKNESS OF 1/4 IN. AND 1-1/4 IN. FOR 1 AND 2 HR RATED WALL ASSEMBLIES, RESPECTIVELY, APPLIED WITH ANNULUS BETWEEN METALLIC SLEEVE AND PERIPHERY OF THE OPENING, FLUSH WITH BOTH SURFACES OF WALL ASSEMBLY. AT THE POINT OF CONTACT LOCATION BETWEEN SLEEVE AND GYPSUM WALLBOARD, A MIN. 1/4 IN. DIAM BEAD OF CAULK SHALL BE APPLIED AT THE SLEEVE/WALLBOARD INTERFACE ON BOTH SURFACES OF WALL ASSEMBLY. A MIN. 1/4 IN. BEAD OF CAULK SHALL ALSO BE APPLIED OVER THE OUTER EDGES OF THE WRAP STRIPS AND WITHIN THE ANNULAR SPACE BETWEEN THE WRAP STRIP AND SLEEVE ON BOTH SIDES OF THE SLEEVE.

1 AND 2 HOUR FIRE RATED PENETRATION FOR PLASTIC PIPE
NOT TO SCALE



TRAP PRIMER DETAIL (OPTION 2)
NOT TO SCALE



APPLICATION DETAILS

1. INSTALL THE FIRESTOP SYMMETRICALLY ON BOTH SIDES OF THE WALL ASSEMBLY
2. MINIMUM ANNULAR SPACE REQUIREMENT IS ZERO, POINT CONTACT. MAXIMUM ANNULAR SPACE ALLOWABLE (FOR 12" PIPE) IS 3/16-5/16 IN.
3. RECESS A NOMINAL 1 INCH THICKNESS OF LIGHTLY PACKED MINERAL WOOL SAFING 1" FROM THE WALL SURFACE.
4. FILL THE ANNULAR SPACE AROUND THE PIPE WITH A MINIMUM 1" -IN. DEPTH OF 3M FIRE BARRIER CP 25 CAULK.

1 HR FIRE RATED PENETRATION FOR METALLIC PIPE
NOT TO SCALE



OFFICE OF TAMP
CONTRACT ADMINISTRATION
DEPARTMENT
PLANNING AND DESIGN DIVISION
305 E. JACKSON STREET 4 NORTH
TAMPA, FLORIDA 33602
p. 813. 274. 8466 - f. 813. 274. 8080
urc www.tampagov.net

James E. Jackson, Jr., AIA, NOMA
City Architect
Edward D. Rice, AIA
Project Architect
Kevin L. Henka, AIA
Project Architect
Thomas A. Hester, Sr., AIA, NOMA
Project Architect
David R. Pagitt
Supervisor, Architectural Drafting
Kinsey C. Tillman
Drafting Technician
Jerry P. Sanders
Drafting Technician
Byron K. Thomas, LEED AP
Drafting Technician

MEP CONSULTANT
GRINER ENGINEERING, INC.
1628 1st AVENUE NORTH
ST. PETERSBURG, FL 33713

STRUCTURAL CONSULTANT
BILLER REINHART
STRUCTURAL GROUP, INC.
4014 GUNN HWY. SUITE 240
TAMPA, FL 33713

CIVIL CONSULTANT
B M CIVIL LLC
12315 WYCLIFF PLACE
TAMPA, FL 33626

LANDSCAPE CONSULTANT
DAVID CONNER & ASSOCIATES
1509 W. SWANN AVENUE SUITE 255
TAMPA, FL 33606

FIRE STATION 23
20770 TROUT CREEK DR.
TAMPA, FL 33647

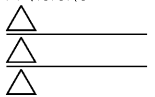
DPW FILE NUMBER

DPW NUMBER
17-C-00037

ISSUE DATE
07-28-2017

DRAWN BY

REVISIONS



SEAL

Joseph H. Griner III, P.E., FL. 39491

SCALE: N.T.S.

PLUMBING DETAILS

SHEET NUMBER

P-7.2

X OF X



GRINER
GRINER ENGINEERING, INC.
1628 First Avenue North
St. Petersburg, Florida 33713
Phone: (727)-822-2335
Fax: (727)-821-3361
Certificate of Authorization #3173

Date	06-15-2017
Drawn	JL
Designed	JL
EOR	JHG
Job no.	17049