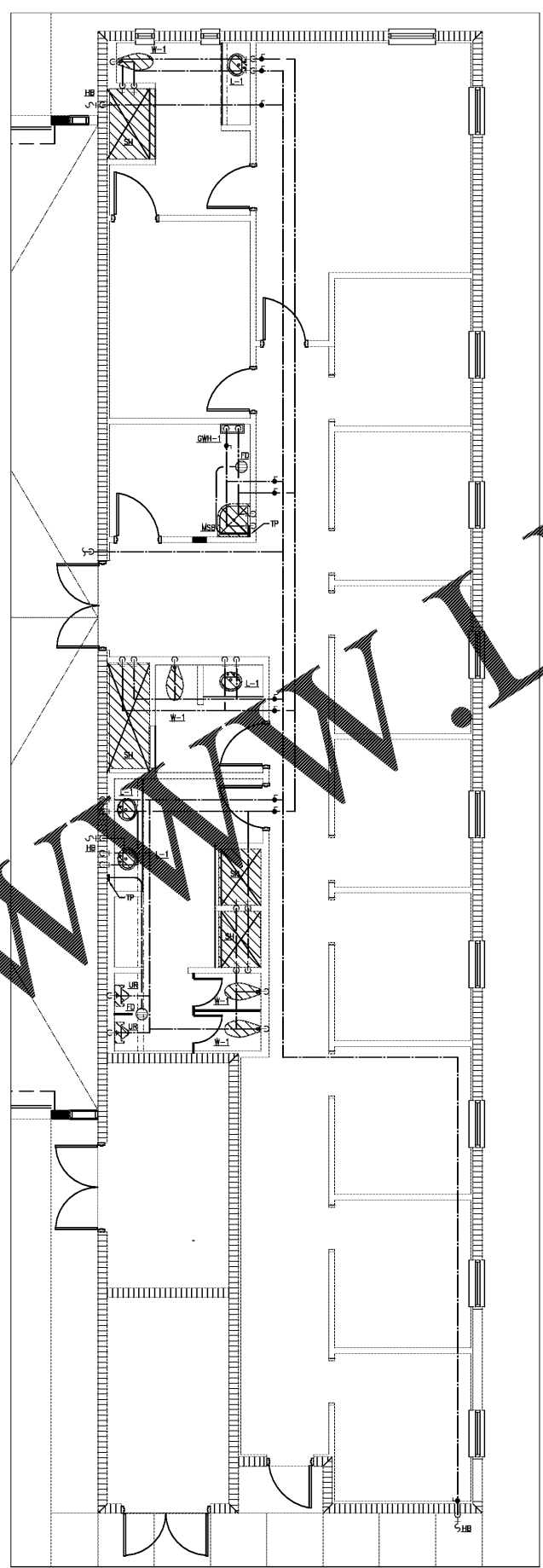
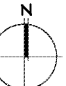
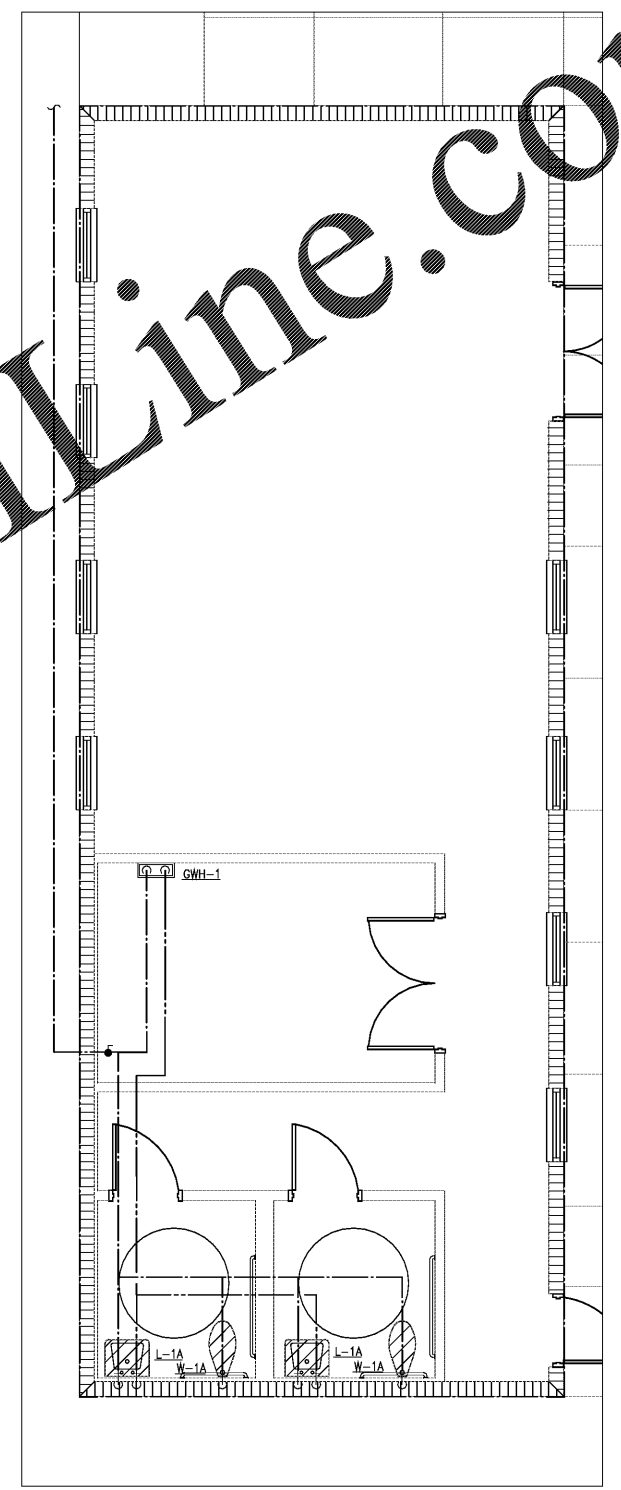

PARTIAL SUPPLY PLAN 1
 SCALE: 1/4" = 1'-0"




PARTIAL SUPPLY PLAN 2
 SCALE: 1/4" = 1'-0"



P-4.0
PARTIAL SUPPLY PLAN 3

 GRINER GRINER ENGINEERING, INC. 1628 First Avenue North St. Petersburg, Florida 33713 Phone: (727)-822-2335 Fax: (727)-821-3361 Certificate of Authorization #3173		Date	06-15-2017
		Drawn	JL
		Designed	JL
		EOR	JHG
		Job no.	17049


CITY OF TAMPA
 CONTRACT ADMINISTRATION
 DEPARTMENT
 PLANNING AND DESIGN DIVISION
 205 E. JACKSON STREET 4 NORTH
 TAMPA, FLORIDA 33602
 p: 813. 274. 8466 - f: 813. 274. 8080
 ur: www.tampagov.net

James E. Jackson, Jr. AIA, NOMA
 City Architect
 Edward D. Rice, AIA
 Project Architect
 Kevin L. Henika, AIA
 Project Architect
 Thomas A. Hester, Sr., AIA, NOMA
 Project Architect
 David R. Pagitt
 Supervisor, Architectural Drafting
 Kinsey C. Tillman
 Drafting Technician
 Jerry P. Sanders
 Drafting Technician
 Byron K. Thomas, LEED AP
 Drafting Technician

MEP CONSULTANT
GRINER ENGINEERING, INC.
 1628 1st. AVENUE NORTH
 ST. PETERSBURG, FL 33713

STRUCTURAL CONSULTANT
BILLER REINHART
 STRUCTURAL GROUP, INC.
 4014 GUNN HWY. SUITE 240
 TAMPA, FL 33713

CIVIL CONSULTANT
B M CIVIL LLC
 12315 WYCLIFF PLACE
 TAMPA, FL 33626

LANDSCAPE CONSULTANT
DAVID CONNER & ASSOCIATES
 1503 W. SWANN AVENUE SUITE 255
 TAMPA, FL 33606

FIRE STATION 23
 20770 TROUT CREEK DR.
 TAMPA, FL 33647

DPW FILE NUMBER

DPW NUMBER
 17-C-00037

ISSUE DATE
 07-28-2017

DRAWN BY

REVISIONS

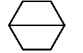
▲	_____
▲	_____
▲	_____

SEAL

Joseph H. Griner III, P.E. FL. 39491
 SCALE: 1/4" = 1'-0"

ENLARGED PARTIAL
PLUMBING SUPPLY PLANS

SHEET NUMBER

P-4.1
 X OF X


Order Plans @

WWW.LDILine.com