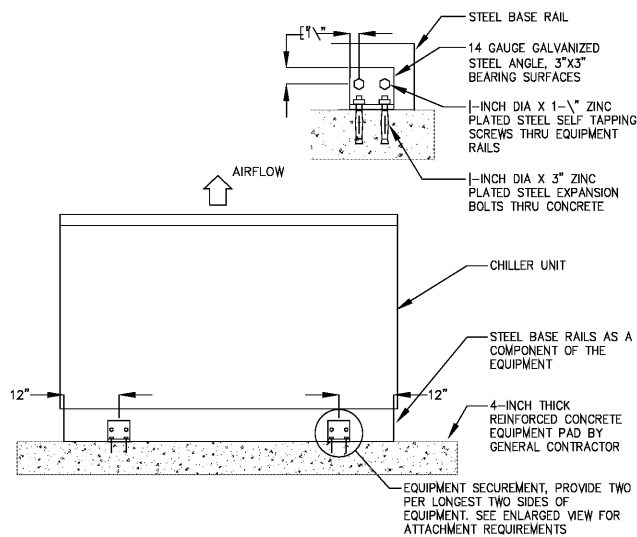
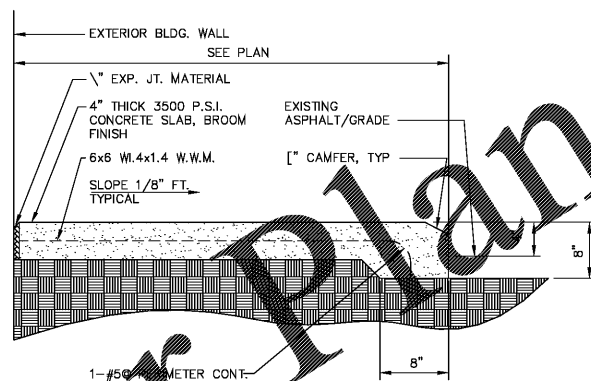


VAV BOX DETAIL
NOT TO SCALE



CONCRETE PAD UNIT TIE-DOWN DETAIL
NOT TO SCALE



CONCRETE PAD DETAIL
NOT TO SCALE

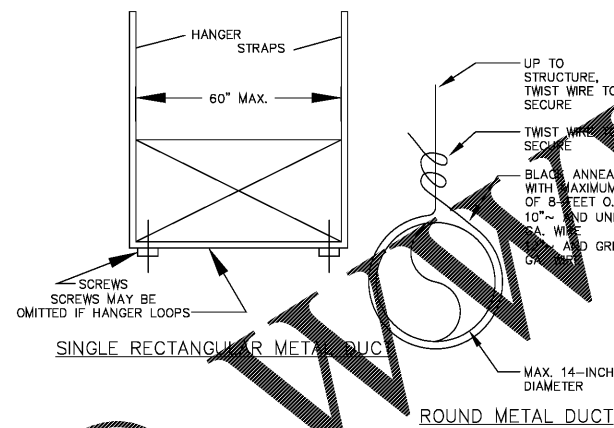
**RECTANGULAR DUCT HANGERS
MINIMUM SIZE**

MAXIMUM HALF OF DUCT PERIMETER	Pair at 10 ft. Spacing		Pair at 8 ft. Spacing		Pair at 5 ft. Spacing		Pair at 4 ft. Spacing	
	STRAP	WIRE/ROD	STRAP	WIRE/ROD	STRAP	WIRE/ROD	STRAP	WIRE/ROD
P/2 = 30"	1" x 22 ga.	10 ga. (136")	1" x 22 ga.	10 ga. (136")	1" x 22 ga.	10 ga. (106")	1" x 22 ga.	10 ga. (106")
P/2 = 72"	1" x 18 ga.	3/8"	1" x 20 ga.	1/4"	1" x 22 ga.	1/4"	1" x 22 ga.	1/4"
P/2 = 96"	1" x 16 ga.	3/8"	1" x 18 ga.	3/8"	1" x 20 ga.	3/8"	1" x 22 ga.	1/4"
P/2 = 120"	1 1/2" x 16 ga.	1/2"	1" x 16 ga.	3/8"	1" x 18 ga.	3/8"	1" x 20 ga.	1/4"
P/2 = 168"	1 1/2" x 16 ga.	1/2"	1" x 16 ga.	1/2"	1" x 16 ga.	3/8"	1" x 18 ga.	3/8"
P/2 = 192"	1 1/2" x 16 ga.	1/2"	1" x 16 ga.	1/2"	1" x 16 ga.	3/8"	1" x 16 ga.	3/8"
P/2 = 192" up	SPECIAL ANALYSIS REQUIRED							

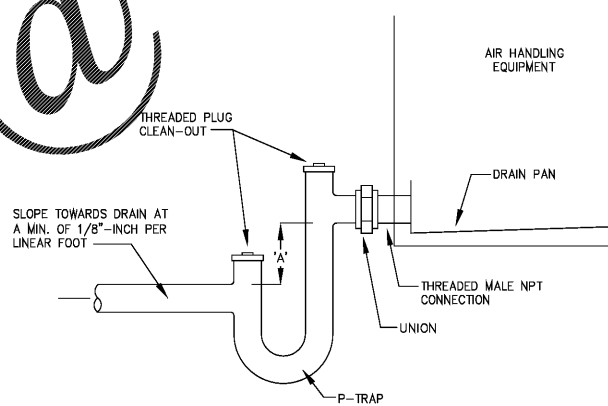
WHEN STRAPS ARE LAP JOINED USE THESE MINIMUM FASTENERS:

STRAP	SINGLE HANGER MAXIMUM ALLOWABLE LOAD	
	STRAP	WIRE OR ROD (Dia.)
1" x 16, 20, 22 ga. - two #10 or one #11 bolt	1" x 22 ga. - 250 lbs.	0.105" - 80lbs
1" x 18 ga. - two #10 dia.	1" x 20 ga. - 320 lbs.	0.135" - 120 lbs.
1" x 18 ga. - two #11 dia.	1" x 18 ga. - 420 lbs.	0.162" - 160 lbs.
Place fasteners in series, not side by side.	1" x 16 ga. - 700 lbs.	1" - 180 lbs.
	1 1/2" x 16 ga. - 1100 lbs.	1" - 1250 lbs.
		1" - 2000 lbs.
		1" - 3000 lbs.

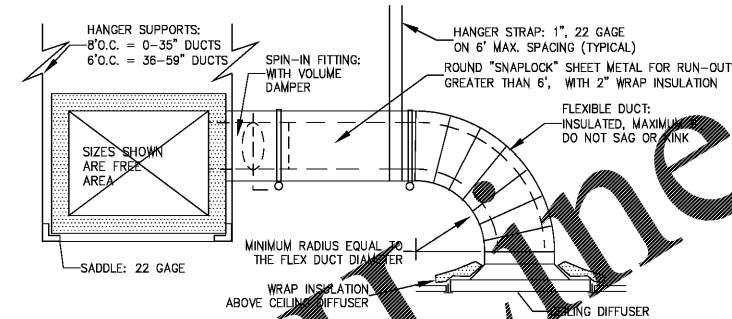
NOTES:
1. Dimensions other than gauge are in inches.
2. Tables allow for duct weight, 1 lb./ft. insulation weight and normal reinforcement and trapeze weight, but no external loads.
3. For custom design of hangers, designers may consult SMACNA's rectangular industrial duct standards, the AISI Cold Formed Steel Design Manual and the AISI Steel Construction Manual.
4. Straps are galvanized steel; other materials are uncoated steel.
5. Allowable loads for P/2 assume that ducts are 16 ga. maximum, except that when maximum duct dimension (W) is over 60" then P/2 maximum is 1.25 W.
6. For upper attachments see Fig. 4-2.
7. For lower attachments see Fig. 4-4.
8. For trapeze sizes see Table 4-3 and Fig. 4-5.
9. 12, 10 or 8 ga. wire is steel of black annealed, bright basic or galvanized type.



DUCTWORK SUPPORT DETAILS
NOT TO SCALE

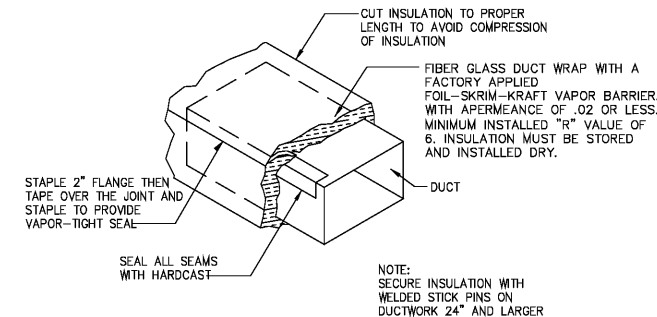


CONDENSATE DRAIN TRAP DETAIL
NOT TO SCALE



- NOTES:
1. HANGER SUPPORTS SHALL BE AS NOTED ABOVE FOR DUCTS UP TO 24\"/>
 - ELBOWS SHALL BE SQUARE NECK (SAME SIZE AND OUTLET DIMENSION) WITH 2\"/>
 - OFFSETS SHALL NOT EXCEED 30 DEGREE ANGLE, AND SHALL NOT REDUCE THE FREE AREA OF THE DUCT.
 - TRANSITIONS SHALL NOT EXCEED 1:3 RATIO (4\"/>
 - RECTANGULAR BRANCH CONNECTIONS SHALL BE 45 DEGREE ENTRY TYPE, WITH METAL SLEEVE & CLINCH LOCK CONNECTION. ENTRY LENGTH SHALL BE 25% OF BRANCH DUCT WIDTH.
 - ROUND BRANCH DUCT CONNECTIONS SHALL BE WITH "FLEXMASTER" FLDE SPIN-IN FITTINGS, WITH SCOOP, DAMPER AND HANDLE.
 - FLEXIBLE ROUND DUCT SHALL INCLUDE: HELIX COIL FLEXIBLE DUCTING, A 1-1/2\"/>

SUPPLY DIFFUSER RUNOUT DETAIL
NOT TO SCALE



DUCT INSULATION DETAIL
NOT TO SCALE



CITY OF TAMPA
CONTRACT ADMINISTRATION
DEPARTMENT
PLANNING AND DESIGN DIVISION
105 E. JACKSON STREET 4 NORTH
TAMPA, FLORIDA 33602
p: 813. 274. 8456 - f: 813. 274. 8080
url: www.tampagov.net

James E. Jackson, Jr. AIA, NOMA
City Architect
Edward D. Rice, AIA
Project Architect
Kevin L. Henika, AIA
Project Architect
Thomas A. Hester, Sr., AIA, NOMA
Project Architect
David R. Pagitt
Supervisor, Architectural Drafting
Kinsey C. Tillman
Drafting Technician
Jerry P. Sanders
Drafting Technician
Byron K. Thomas, LEED AP
Drafting Technician

MEP CONSULTANT
GRINER ENGINEERING, INC.
1628 1st. AVENUE NORTH
ST. PETERSBURG, FL 33713

STRUCTURAL CONSULTANT
BILLER REINHART
STRUCTURAL GROUP, INC.
4014 GUNN HWY. SUITE 240
TAMPA, FL 33713

CIVIL CONSULTANT
B M CIVIL LLC
12315 WYCLIFF PLACE
TAMPA, FL 33626

LANDSCAPE CONSULTANT
DAVID CONNER & ASSOCIATES
1509 W. SWANN AVENUE SUITE 255
TAMPA, FL 33606

FIRE STATION 23
20770 TROUT CREEK DR.
TAMPA, FL 33647

DPW FILE NUMBER

DPW NUMBER
17-C-00037

ISSUE DATE
07-28-2017

DRAWN BY

REVISIONS
▲
▲
▲

SEAL

Joseph H. Griner III, P.E. FL. 39491

SCALE: N.T.S.

MECHANICAL DETAILS

SHEET NUMBER

M-6.0

X OF X



GRINER ENGINEERING, INC.
1628 First Avenue North
St. Petersburg, Florida 33713
Phone: (727)-822-2335
Fax: (727)-821-3361
Certificate of Authorization #3173

Date	06-15-2017
Drawn	JL
Designed	JL
EOR	JHG
Job no.	17049

Order Plans