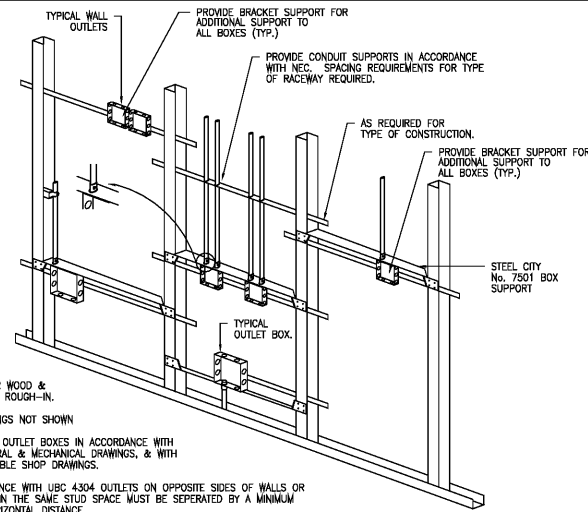


NOTE:  
TYPICAL CONDUITS SHOWN. SEE PLAN  
FOR CONDUIT SIZE AND ACTUAL NUMBER.

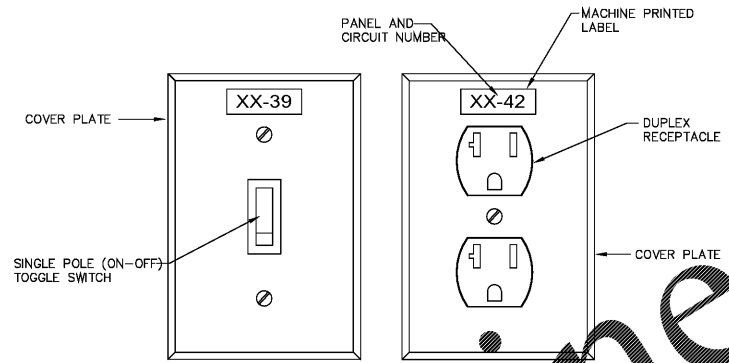
**SUPPORT FOR MULTIPLE CONDUIT STUB-UPS**

NOT TO SCALE



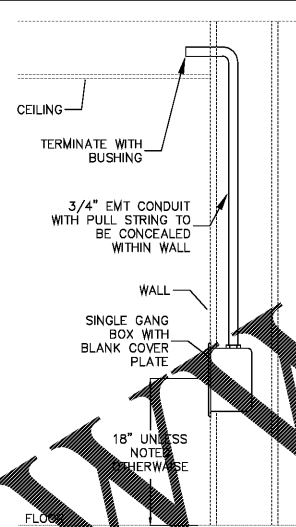
**BACK TO BACK ELECTRICAL OUTLETS DETAIL**

NOT TO SCALE



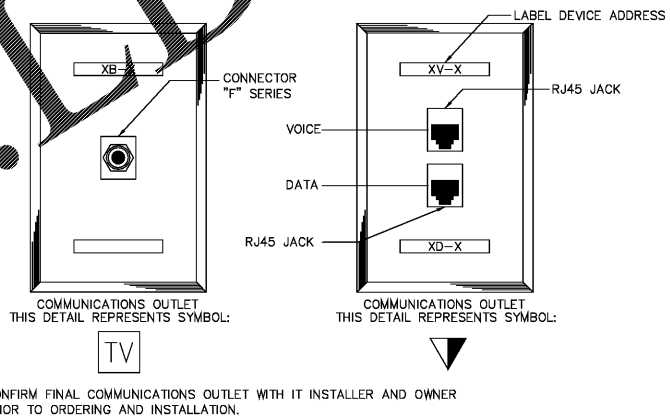
**RECEPTACLE AND LIGHT SWITCH ID PLATE DETAIL**

NOT TO SCALE



**VOICE/DATA DROP DETAIL**

NOT TO SCALE



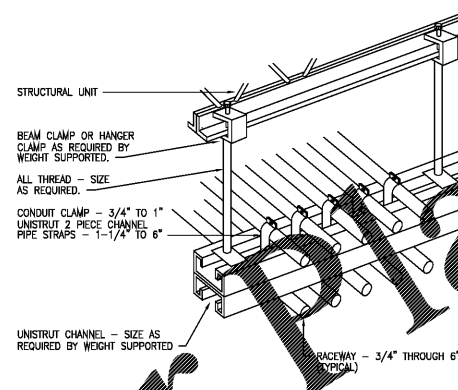
**COMMUNICATION OUTLET DETAILS**

NOT TO SCALE

- NOTES:
1. TYPICAL FOR WOOD & METAL STUD ROUGH-IN.
  2. PLASTER RINGS NOT SHOWN.
  3. LOCATE ALL OUTLET BOXES IN ACCORDANCE WITH ARCHITECTURAL & MECHANICAL DRAWINGS, & WITH ALL APPLICABLE SHOP DRAWINGS.
  4. IN ACCORDANCE WITH UBC 4304 OUTLETS ON OPPOSITE SIDES OF WALLS OR PARTITIONS IN THE SAME STUD SPACE MUST BE SEPERATED BY A MINIMUM OF 24\"/>

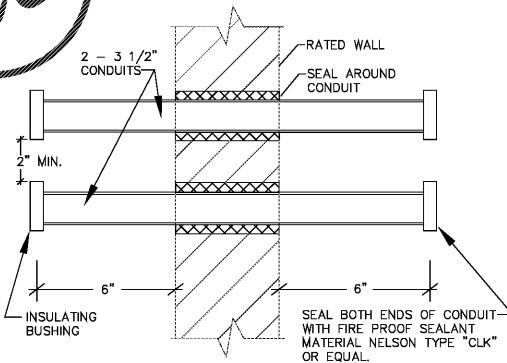
**TYPICAL ROUGH-IN REQUIREMENTS**

NOT TO SCALE



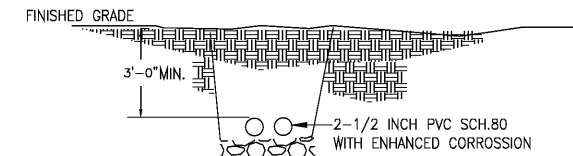
**TYPICAL CONDUIT RACK DETAIL**

NOT TO SCALE



**DETAIL FOR CABLE BUNDLE CONDUIT PENETRATION OF RATED WALL**

NOT TO SCALE



- NOTE:
1. CONTRACTOR SHALL TRENCH AND INSTALL UNDERGROUND SERVICE AS SHOWN.
  2. COMPLY WITH ALL APPLICABLE CODES AND SPC STANDARDS.

**TRENCHING DETAIL**

NOT TO SCALE



OFFICE OF TAMPA  
CONTRACT ADMINISTRATION  
DEPARTMENT  
PLANNING AND DESIGN DIVISION  
105 E. JACKSON STREET 4 NORTH  
TAMPA, FLORIDA 33602  
p: 813. 274. 8456 - f: 813. 274. 8080  
url: www.tampagov.net

James E. Jackson, Jr. AIA, NOMA  
City Architect  
Edward D. Rice, AIA  
Project Architect  
Kevin L. Henika, AIA  
Project Architect  
Thomas A. Hester, Sr., AIA, NOMA  
Project Architect  
David R. Pagitt  
Supervisor, Architectural Drafting  
Kinsey C. Tillman  
Drafting Technician  
Jerry P. Sanders  
Drafting Technician  
Byron K. Thomas, LEED AP  
Drafting Technician

MEP CONSULTANT  
GRINER ENGINEERING, INC.  
1628 1st. AVENUE NORTH  
ST. PETERSBURG, FL 33713

STRUCTURAL CONSULTANT  
BILLER REINHART  
STRUCTURAL GROUP, INC.  
4014 GUNN HWY. SUITE 240  
TAMPA, FL 33713

CIVIL CONSULTANT  
B M CIVIL LLC  
12315 WYCLIFF PLACE  
TAMPA, FL 33626

LANDSCAPE CONSULTANT  
DAVID CONNER & ASSOCIATES  
1503 W. SWANN AVENUE SUITE 255  
TAMPA, FL 33606

FIRE STATION 23  
20770 TROUT CREEK DR.  
TAMPA, FL 33647

DPW FILE NUMBER

DPW NUMBER  
17-C-00037

ISSUE DATE  
07-28-2017

DRAWN BY

REVISIONS  
△  
△  
△

SEAL

Jose A Rosario, P.E. FL. 74457

SCALE: N.T.S.

ELECTRICAL DETAILS 3/4

SHEET NUMBER

E4.3

X OF X



**GRINER**  
GRINER ENGINEERING, INC.  
1628 First Avenue North  
St. Petersburg, Florida 33713  
Phone: (727)-822-2335  
Fax: (727)-821-3361  
Certificate of Authorization #3173

Date	06-15-2017
Drawn	HH
Designed	HH
EOR	JAR
Job no.	17049

ELECTRICAL DETAILS  
SCALE: N.T.S.

Order Plans