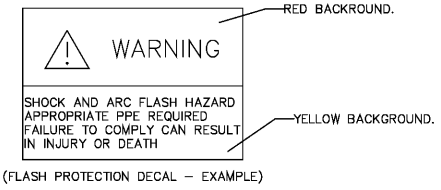


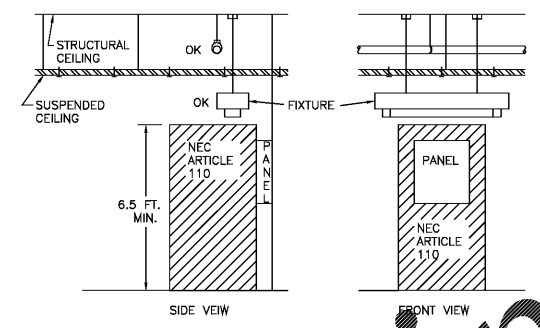
- NOTES:
1. NEW NAMEPLATES MUST BE INSTALLED ON ALL ELECTRICAL PANELS. TEMPORARY NAMEPLATES ARE NOT ACCEPTABLE.
 2. THE AMPERAGE RATING ENGRAVED ON THE NAMEPLATE SHALL BE THE RATING OF THE MAIN OVER-CURRENT PROTECTION DEVICE, ITS TRIP DEVICE SETTING, OR DESIGN BUS CAPACITY IN THE ABSENCE OF A MAIN OVER-CURRENT DEVICE, NOT THE SWITCHBOARD OR PANELBOARD BUS RATING.

TYPICAL PANELBOARD NAMEPLATE DETAIL
NOT TO SCALE

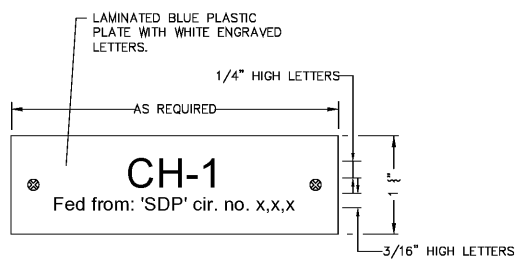


CONTRACTOR SHALL PROVIDE DECAL 1-1/2" x 2-1/2" WITH 3/16" LETTERING STATING THE ABOVE. DECAL SHALL BE LOCATED ON THE OUTSIDE OF ALL SWITCHBOARDS, PANEL BOARDS AND DISCONNECT SWITCHES. DECAL SHALL BE RED AND YELLOW BACKGROUND WITH BLACK LETTERING WITH A CLEAR PLASTIC LAMINATE TOP COVER OVER DECAL.

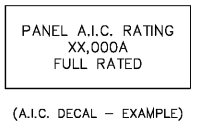
FLASH PROTECTION DECAL
NOT TO SCALE



PANEL AND SWITCHBOARD CLEARANCE
NOT TO SCALE

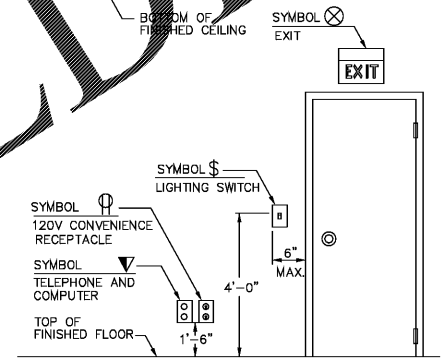


TYPICAL HVAC CHILLER UNIT NAMEPLATE DETAIL
NOT TO SCALE



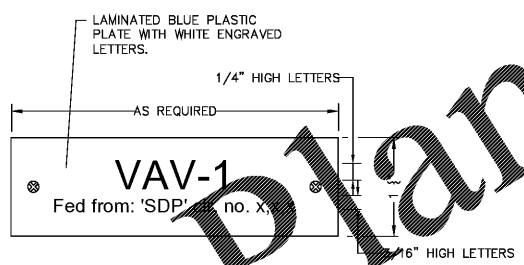
NOTE:
1. CONTRACTOR SHALL PROVIDE DECAL 1-1/2" x 2-1/2" WITH 3/16" LETTERING STATING THE A.I.C. RATING OF EACH PANEL. THIS DECAL SHALL BE LOCATED ON THE INSIDE OF PANEL DOOR. DECAL SHALL BE WHITE BACKGROUND WITH BLACK LETTERING WITH A CLEAR PLASTIC LAMINATE TOP COVER OVER DECAL.

A.I.C. IDENTIFICATION DECAL
NOT TO SCALE

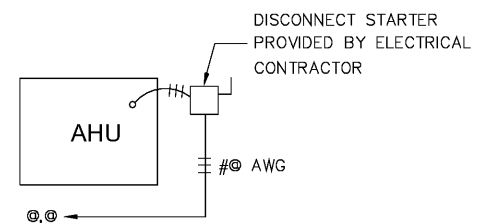


NOTE:
VERIFY HEIGHTS SHOWN COMPLY WITH LOCAL BUILDING CODE. ALL DEVICE HEIGHTS GIVEN THROUGHOUT THIS DRAWING SET SHALL BE TO BOTTOM OF OUTLET BOX, UNLESS NOTED OTHERWISE.

TYPICAL DEVICE MOUNTING HEIGHT
NOT TO SCALE



TYPICAL HVAC UNIT NAMEPLATE DETAIL
NOT TO SCALE



GENERAL NOTES

1. VERIFY NAMEPLATE RATINGS, LOCATIONS AND POINT OF POWER CONNECTIONS PRIOR TO ROUGH-IN.
2. DO NOT LOCATE DISCONNECT SWITCHES ON EQUIPMENT HOUSING. WALL OR TRUSS MOUNT OR USE STRUT.
3. EQUIPMENT REQUIREMENTS ARE FOR MANUFACTURER AND MODEL NUMBER LISTED ON MECHANICAL PLANS. THE MECHANICAL CONTRACTOR SHALL BEAR ANY ADDITIONAL COSTS INCURRED IF ALTERNATE EQUIPMENT IS USED.
4. CONTRACTOR TO CONNECT TO EQUIPMENT VIA FLEX CONDUIT FOR INDOOR LOCATIONS; SEAL-TITE FLEX CONDUIT FOR OUTDOOR LOCATIONS.

TYPICAL HVAC AIR HANDLING UNIT CONNECTION DETAIL
NOT TO SCALE



OFFICE OF TAMPA
CONTRACT ADMINISTRATION
DEPARTMENT OF
PLANNING AND DESIGN DIVISION
305 E. JACKSON STREET 4 NORTH
TAMPA, FLORIDA 33602
p: 813. 274. 8456 - f: 813. 274. 8080
url: www.tampagov.net

James E. Jackson, Jr., AIA, NOMA
City Architect
Edward D. Rice, AIA
Project Architect
Kevin L. Henka, AIA
Project Architect
Thomas A. Hester, Sr., AIA, NOMA
Project Architect
David R. Pagitt
Supervisor, Architectural Drafting
Kinsey C. Tillman
Drafting Technician
Jerry P. Sanders
Drafting Technician
Byron K. Thomas, LEED AP
Drafting Technician

MEP CONSULTANT
GRINER ENGINEERING, INC.
1628 1st AVENUE NORTH
ST. PETERSBURG, FL 33713

STRUCTURAL CONSULTANT
BILLER REINHART
STRUCTURAL GROUP, INC.
4014 GUNN HWY. SUITE 248
TAMPA, FL 33713

CIVIL CONSULTANT
B M CIVIL LLC
12315 WYCLIFF PLACE
TAMPA, FL 33626

LANDSCAPE CONSULTANT
DAVID CONNER & ASSOCIATES
1503 W. SWANN AVENUE SUITE 255
TAMPA, FL 33606

FIRE STATION 23
20770 TROUT CREEK DR.
TAMPA, FL 33647

DPW FILE NUMBER

DPW NUMBER
17-C-00037

ISSUE DATE
07-28-2017

DRAWN BY

REVISIONS
△
△
△

SEAL

Jose A Rosario, P.E. FL. 74457

SCALE: N.T.S.

ELECTRICAL DETAILS 2/4

SHEET NUMBER

E4.2

X OF X

GRINER
GRINER ENGINEERING, INC.
1628 First Avenue North
St. Petersburg, Florida 33713
Phone: (727)-822-2335
Fax: (727)-821-3361
Certificate of Authorization #3173

Date	06-15-2017
Drawn	HH
Designed	HH
EOR	JAR
Job no.	17049

Order Plans

ELECTRICAL DETAILS
SCALE: N.T.S.