



CITY OF TAMPA
CONTRACT ADMINISTRATION
DEPARTMENT
PLANNING AND DESIGN DIVISION
105 E. JACKSON STREET 4 NORTH
TAMPA, FLORIDA 33602
P: 813. 274. 8456 - F: 813. 274. 8080
URL: www.tampagov.net

James E. Jackson, Jr. AIA, NOMA
City Architect
Edward D. Rice, AIA
Project Architect
Kevin L. Henika, AIA
Project Architect
Thomas A. Hester, Sr., AIA, NOMA
Project Architect
David R. Pagitt
Supervisor, Architectural Drafting
Kinsey C. Tillman
Drafting Technician
Jerry P. Sanders
Drafting Technician
Byron K. Thomas, LEED AP
Drafting Technician

MEP CONSULTANT
GRINER ENGINEERING, INC.
1628 1st AVENUE NORTH
ST. PETERSBURG, FL 33713

STRUCTURAL CONSULTANT
BILLER REINHART
STRUCTURAL GROUP, INC.
4014 GUNN HWY. SUITE 248
TAMPA, FL 33713

CIVIL CONSULTANT
B M CIVIL LLC
12315 WYCLIFF PLACE
TAMPA, FL 33626

LANDSCAPE CONSULTANT
DAVID CONNER & ASSOCIATES
1503 W. SWANN AVENUE SUITE 255
TAMPA, FL 33606

FIRE STATION 23
20770 TROUT CREEK DR.
TAMPA, FL 33647

DPW FILE NUMBER

DPW NUMBER
17-C-00037

ISSUE DATE
07-28-2017

DRAWN BY

REVISIONS
02-21-2014
[Symbol]
[Symbol]
[Symbol]

SEAL

Jose A Rosario, P.E. FL. 74457

SCALE: 1/8" = 1'-0"

ELECTRICAL
POWER PLAN

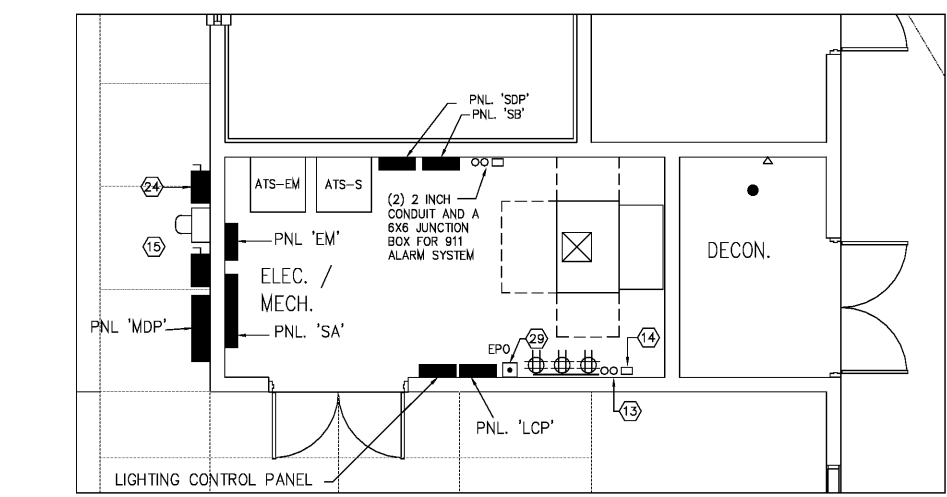
SHEET NUMBER

E2.2

X OF X

ELECTRICAL KEY NOTES:

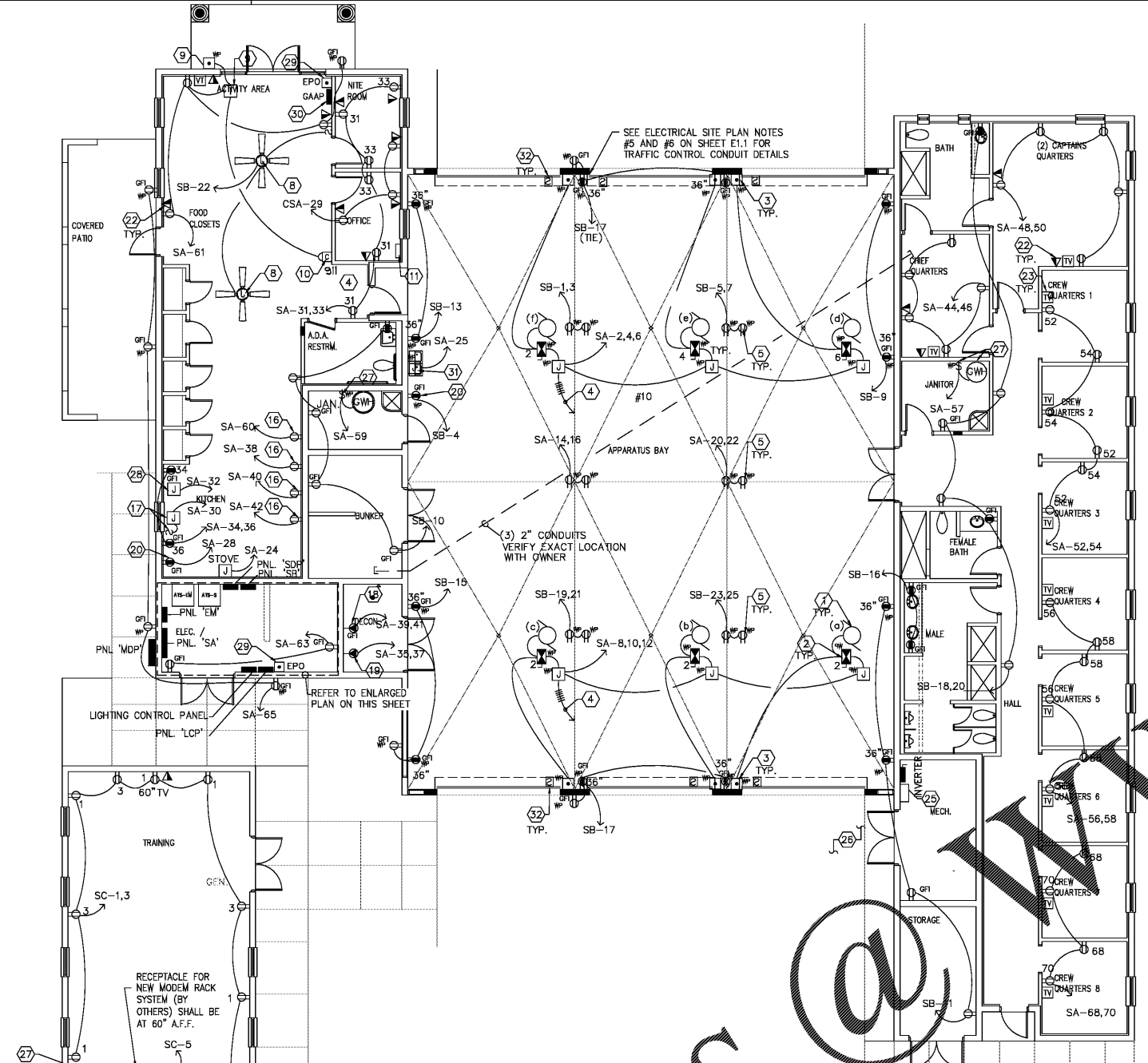
- OVERHEAD DOOR MOTOR. COORDINATE FINAL LOCATION PRIOR TO ROUGH-IN.
- NEMA SIZE "0" REVERSING COMBINATION STARTER IN NEMA 3R ENCLOSURE. CEILING MOUNT ADJACENT TO OVERHEAD DOOR MOTOR. FUSE PER UNIT NAMEPLATE. (TYP. OF 6).
- OVERHEAD DOOR UP-DOWN PUSH-BUTTON CONTROL STATION MOMENTARY CONTACT. FACTORY PAINT RED (SQUARE D CLASS 90001 - TYPE B) NEMA 3R ENCLOSURE SURFACE MOUNT 48" AFF. (TYP. OF 6).
- ROUTE CONTROL CONDUCTORS IN 1/2" C TO MOMENTARY CONTACT PUSH BUTTONS IN CONTROL PANEL LOCATED AT OFFICE #113 CONNECT TO DOOR MOTOR STARTER "UP CONTACTS" ONLY. SEE CONTROL PANEL DETAIL.
- PROVIDE 20A DUPLEX WITH SWIVEL HOOK BY HUBBELL 6"-0" AFF SUSPEND FROM J-BOX MOUNTED AT CEILING WITH #10 "SO" DROP CORD WITH STRAIN RELIEF AT J-BOX AND OUTLET. COORDINATE FINAL LOCATION AND REQUIREMENTS WITH ARCHITECT AND OWNER PRIOR TO ROUGH-IN.
- PROVIDE EXTERIOR 150 KW GENERATOR, 208/120V, 3PH, DUAL FUEL SOURCE (GAS AND LP) WITH OVERSIZE ALTERNATOR. SEE ELECTRICAL RISER DIAGRAM ON SHEET E3.1 FOR REQUIREMENTS.
- PROVIDE FINAL CONNECTION TO GENERATOR PANEL. THE GENERATOR PANEL IS PROVIDED BY THE GENERATOR MANUFACTURER, AND SERVES THE GENERATOR BATTERY CHARGER, HEATERS AND LIGHT/RECEPTACLES.
- PROVIDE 48" PADDLE FAN (HUNTER OR EQUIVALENT) WITH LISTED OUTLET BOX SECURELY MOUNTED TO STRUCTURE. COORDINATE EXACT LOCATION, COLOR AND STYLE WITH ARCHITECT PRIOR TO ROUGH-IN. PRE-WIRE SHALL INCLUDE SWITCH LEG FOR FAN.
- 120V - 10 VAC TRANSFORMER (EDWARDS #590) MOUNT ABOVE AND PUSH BUTTON (EDWARDS #603) MOUNTED FLUSH IN WALL 48" AFF.
- DOOR CHIME 10 VAC (EDWARDS C210W) MOUNTED AT 84" AFF. EXTEND 24V WIRING TO CHIME TRANSFORMER AND PUSH BUTTON. REFER TO SHEET E3.1 FOR DETAILS.
- JUNCTION BOX MOUNT IN WALL FOR LIGHTS, BELLS AND OVERHEAD DOOR MOTORS. PROVIDE FLEXIBLE CONNECTIONS TO CONTROL PANEL IN DESKTOP. COORDINATE EXACT LOCATION PRIOR TO ROUGH-IN. SEE CONTROL PANEL DETAIL AND SCHEDULE ON SHEET E3.1.
- PROVIDE 8"W X 8"H X 3/4" THICK PLYWOOD BACKBOARD WITH BOTTOM AT 18" AFF. PAINT TOP SIDES AND EDGES WITH FIRE RESISTANT PAINT OR PROVIDE FIRE TREATED PLYWOOD. PROVIDE #1/0 CU GROUND TIED INTO BUILDING ELECTRODE GROUNDING SYSTEM.
- PROVIDE (2)-2" EMPTY CONDUIT WITH PULL-WIRE TO 5' OUTSIDE PROPERTY LINE FOR INCOMING TELEPHONE SERVICE AND CITY COMPUTER SYSTEM. COORDINATE EXACT ROUTING OF CONDUIT WITH LOCAL TELEPHONE COMPANY AND OWNER PRIOR TO ROUGH-IN AND MAKE FIELD ADJUSTMENTS AS NECESSARY.
- PROVIDE (1)-2" EMPTY CONDUIT WITH PULL-WIRE TO 5' OUTSIDE PROPERTY LINE FOR INCOMING SPECTRUM BROADBAND SERVICE. COORDINATE EXACT ROUTING OF CONDUIT WITH SPECTRUM COMPANY PRIOR TO ROUGH-IN AND MAKE FIELD ADJUSTMENTS AS NECESSARY.
- 3 PHASE DISCONNECT SAFETY SWITCH, METER AND CT CABINET PER UTILITY COMPANY SPECIFICATIONS.
- PROVIDE RECEPTACLE FOR REFRIGERATOR. COORDINATE EXACT LOCATION WITH OWNER PRIOR TO ROUGH-IN.
- PROVIDE FINAL CONNECTION TO GARBAGE DISPOSAL WITH 1/2" FLEXIBLE METAL CONDUIT. PROVIDE A SINGLE POLE SWITCH ADJACENT TO SINK ABOVE COUNTER FOR CONTROL. COORDINATE WITH PLUMBING CONTRACTOR FOR DRAWINGS.
- PROVIDE 20 AMP, 230 VOLT WASHER RECEPTACLE WITH A SINGLE GANG STAINLESS STEEL COVER PLATE MOUNTED AT 48" AFF. EXTEND 4 #12 IN 3/4" CONDUIT TO PANEL.
- PROVIDE 30 AMP, 230 VOLT DRYER RECEPTACLE WITH A SINGLE GANG STAINLESS STEEL COVER PLATE MOUNTED AT 48" AFF. EXTEND 4 #10 IN 3/4" CONDUIT TO PANEL.
- PROVIDE 20 AMP RECEPTACLE FOR ICE MACHINE. COORDINATE EXACT LOCATION AND EXTEND 3#12 IN 3/4" CONDUIT TO PANEL.
- NEW JUNCTION BOX FOR 911 CIRCUITS FROM 'EM' PANEL. RUN 1 #12, 1 #12 EG -1/2" C AND EXTEND AS NEEDED.
- PROVIDE SINGLE GANG BOX 18" AND EXTEND A 3/4" CONDUIT TO ACCESSIBLE CEILING SPACE AND TERMINATE WITH A PLASTIC BUSHING. FURNISH WITH PULLSTRING FOR TELCOMMABLES.
- PROVIDE A SINGLE GANG BOX 18" AND EXTEND A 3/4" C FROM JUNCTION BOX TO ACCESSIBLE CEILING SPACE AND TERMINATE WITH A PLASTIC BUSHING. FURNISH WITH PULLSTRING FOR TELCOMMABLES.
- NEW 60A, 4 POLE, NEMA 4X DISCONNECT SWITCH MOUNT ADJACENT TO ELECTRIC METER FOR PHOTOVOLTAIC SYSTEM. COORDINATE EXACT REQUIREMENTS WITH UTILITY COMPANY AND PHOTOVOLTAIC SYSTEM INSTALLER.
- PROVIDE INVERTERS FOR PHOTOVOLTAIC SYSTEM.
- COORDINATE ELECTRICAL EQUIPMENT IN ELECTRICAL/MECHANICAL ROOMS WITH MECHANICAL CONTRACTOR AND DRAWINGS PRIOR TO ROUGH-IN. CONTRACTOR SHALL FIELD VERIFY THE EXACT EQUIPMENT LAYOUTS PRIOR TO ORDERING OF THE EQUIPMENT AND PROVIDE CLEARANCE AS REQUIRED PER NEC.
- PROVIDE WP HP RATED DISCONNECT AND FINAL CONNECTION TO GAS WATER HEATER. COORDINATE FINAL REQUIREMENTS WITH PLUMBING CONTRACTOR AND DRAWINGS PRIOR TO ROUGH-IN.
- PROVIDE FINAL CONNECTION TO DISHWASHER WITH 1/2" FLEXIBLE METAL CONDUIT. EXTEND 3 #12 IN 3/4" CONDUIT TO PANEL.
- GENERATOR EMERGENCY STOP SWITCH, LOCATE ADJACENT TO FIRE ALARM CONTROL PANEL IN NEMA 3R BOX, ENGRAVED PLATE WITH 1/4" WHITE ENGRAVED LETTERS ON RED LAMINATED PLASTIC UNDER STOP SWITCH TO READ "GENERATOR EMERGENCY STOP". SURFACE MOUNT SWITCH 4'-6". REFER TO SHEET E3.1 FOR ADDITIONAL REQUIREMENTS.
- GENERATOR ANNUNCIATOR PANEL. REFER TO SHEET E3.1 FOR ADDITIONAL REQUIREMENTS. COORDINATE FINAL LOCATION WITH AUTHORITY HAVING JURISDICTION PRIOR TO ROUGH-IN.
- PROVIDE FINAL CONNECTION TO ELECTRICAL WATER COOLER. COORDINATE EXACT LOCATION AND REQUIREMENTS WITH PLUMBING CONTRACTOR. REFER TO PLUMBING SCHEDULE.
- PROVIDE WP JUNCTION BOX AT 12" AFF AND RACEWAY FOR GARAGE DOOR SWITCHES. COORDINATE FINAL LOCATION AND REQUIREMENTS WITH GARAGE DOOR INSTALLER AND OWNER.



ENLARGED MECH/ELECTRICAL ROOM (109)
SCALE: 1/4" = 1'-0"

GRINER
GRINER ENGINEERING, INC.
1628 First Avenue North
St. Petersburg, Florida 33713
Phone: (727)-822-2335
Fax: (727)-821-3361
Certificate of Authorization #3173

Date	06-15-2017
Drawn	HH
Designed	HH
EOR	JAR
Job no.	17049



ELECTRICAL POWER PLAN
SCALE: 1/8" = 1'-0"

GENERAL POWER NOTES:

- COORDINATE ALL ELECTRICAL WORK WITH ARCHITECT AND OWNER PRIOR TO BID AND ROUGH-IN.
- COORDINATE EXACT DEVICE AND EQUIPMENT LOCATIONS, MOUNTING HEIGHTS AND POWER REQUIREMENTS WITH ARCHITECT/OWNER AND M.F.R CUT SHEETS PRIOR TO ROUGH-IN.
- ALL POWER/LOW VOLTAGE OUTLETS SHALL BE LABELED WITH PANEL AND CIRCUIT NUMBER. COORDINATE WITH OWNER.
- EVERY CIRCUIT AND CIRCUIT MODIFICATION SHALL BE LEGIBLY IDENTIFIED AS TO ITS CLEAR, EVIDENT, AND SPECIFIC PURPOSE OR USE, NOT LIMITED TO LIGHTS AND RECEPTACLES.
- WHEREVER THE WORD "PROVIDE" IS USED, IT SHALL MEAN "FURNISH AND INSTALL COMPLETE AND READY FOR USE."
- BRANCH CIRCUIT SHALL BE MINIMUM 2# 12 AND 1# 12 E.G IN 3/4" C UNLESS OTHERWISE NOTED.
- ALL CONVENIENCE OUTLETS IN KITCHEN AREA TO BE GFCI.
- REFER TO ELECTRICAL DRAWINGS AND PANEL SCHEDULES FOR WIRE SIZES REQUIREMENTS.

Order Plans @