

**GENERAL LIGHTING NOTES:**

- COORDINATE ALL ELECTRICAL WORK WITH ARCHITECT AND OWNER AND GENERAL CONTRACTOR PRIOR TO BID AND ROUGH-IN.
- COORDINATE EXACT LIGHTS AND EQUIPMENT LOCATION WITH ARCHITECT AND OWNER PRIOR TO BID AND ROUGH-IN.
- EVERY CIRCUIT AND CIRCUIT MODIFICATION SHALL BE LEGIBLY IDENTIFIED AS TO ITS CLEAR, EVIDENT, AND SPECIFIC PURPOSE OR USE, NOT LIMITED TO LIGHTS AND RECEPTACLES.
- WHEREVER THE WORD "PROVIDE" IS USED, IT SHALL MEAN "FURNISH AND INSTALL COMPLETE AND READY FOR USE."
- BRANCH CIRCUIT SHALL BE MINIMUM 2# 12 AND 1# 12 E.G IN 3/4" C UNLESS OTHERWISE NOTED.
- CONNECT ALL EMERGENCY LIGHTS, EXIT SIGNS AND NIGHT LIGHTS TO EMERGENCY PANEL "EM".
- ALL BRANCH CIRCUIT BREAKERS SERVING EMERGENCY, EXIT AND NIGHT LIGHT FIXTURES SHALL BE PROVIDED WITH PERMANENT LOCK ON DEVICES.
- ALL CONDUITS SHALL BE RUN PARALLEL ABOVE THE DROP CEILING IN CLEAN AND NEAT MANNER. ALL EXPOSE CONDUITS SHALL BE PAINTED. MATCH FINISH IN THE AREA. COORDINATE WITH ARCHITECT AND OWNER FOR FINAL DIRECTIONS.

**ELECTRICAL KEY NOTES:**

- PROPOSED LOCATION FOR LIGHTING CONTROL SYSTEM MASTER OVER-RIDE DIGITAL SWITCH AT CONTROL PANEL IN OFFICE, CONNECT PER MANUFACTURER'S INSTRUCTIONS. THE SWITCH SHALL TURN ON ALL LIGHTS WHICH ARE CONTROLLED BY LIGHTING CONTROL PANELS.
- PROVIDE DIGITAL LIGHTING SWITCHES AS MANUFACTURED BY LCD WITH CONTROL ZONES AS SHOWN ON DRAWINGS. CONTROL SWITCHES SHALL PROVIDE ON-OFF AND OVER-RIDE FUNCTIONS FOR THIS SPACES HOURS OF OPERATIONS. REFER TO ELECTRICAL LIGHTING PLAN FOR DIGITAL SWITCHES LOCATIONS AND SWITCH LEGEND. COORDINATE PROGRAMMING OF THE LIGHTING CONTROL SYSTEM WITH THE OWNER.
- NOT USED.
- PROVIDE CEILING MOUNTED OCCUPANCY SENSOR. LOCATE AND CONNECT OCCUPANCY SENSOR PER MFR RECOMMENDATIONS. REFER TO OCCUPANCY SCHEDULE ON THIS SHEET AND ELECTRICAL DETAIL SHEET E4.1.
- ROUTE HOMERUN: VIA RELAY IN LIGHTING CONTROL SYSTEM PANEL TO BE PHOTOCELL-OPERATED PHOTOCELL-OFF.
- PROVIDE SLAVE LIGHTING CONTROL PANEL WITH 4 RELAYS MANUFACTURED BY BODINE OR APPROVED EQUAL. MOUNT PANEL ABOVE LAY-IN CEILING (TOTAL OF 6). REFER TO ELECTRICAL SHEET E5.2 FOR ADDITIONAL REQUIREMENTS.
- MASTER LIGHTING CONTROL PANEL WITH 4 RELAYS MANUFACTURED BY BODINE OR APPROVED EQUAL. REFER TO ELECTRICAL SHEET E5.2 FOR ADDITIONAL REQUIREMENTS.
- NIGHT LIGHT (NL) AND EXIT SIGN SHALL BE CONNECTED DIRECT TO EMERGENCY PANEL "EM".
- COORDINATE FINAL FIXTURE LOCATION WITH MECHANICAL EQUIPMENT AND CONTRACTOR. IF REQUIRED MAKE FIELD ADJUSTMENT.
- PROVIDE LIGHTING FIXTURE REFER TO LIGHTING FIXTURE SCHEDULE ON ELECTRICAL SHEET E5.1 FOR ADDITIONAL REQUIREMENTS.
- PROVIDE HOMERUN RELAY IN LIGHTING CONTROL SYSTEM PANEL. CONTROL DURING NORMAL BUSINESS HOURS COORDINATE WITH OWNER.
- TWO SWITCHES LESS FROM SLAVE PANEL FOR STEP LIGHTING CONTROL (50% AND 100% LIGHT CONTROL). REFER TO PER MFR EXACT REQUIREMENTS.
- EXTERIOR WALL MOUNTED LIGHT FIXTURE. MOUNT FIXTURE AT 7'-8 1/4" (C.L.-AFF). FIELD VERIFY PRIOR TO INSTALLATION.
- ENTIRE BRANCH CIRCUIT SHALL BE 2 #10 AND 1 #10 E.G IN 3/4" C.
- OFFICE, ADA RESTROOM, STORAGE, BUNKER, ELECTRICAL/MECHANICAL AND DECON ROOMS SHALL BE CONNECTED TO NORMAL BRANCH CIRCUIT SA-7 AND EMERGENCY BRANCH CIRCUIT EM-7 VIA GENERATOR TRANSFER DEVICE (GTD) BY BODINE OR APPROVED EQUAL. REFER TO DETAILS ON SHEET E.4.1 FOR REQUIREMENTS.
- MECHANICAL, BATHS AND STORAGE ROOMS SHALL BE CONNECTED TO NORMAL BRANCH CIRCUIT SA-11 AND EMERGENCY BRANCH CIRCUIT EM-11 VIA GENERATOR TRANSFER DEVICE (GTD) BY BODINE OR APPROVED EQUAL. REFER TO DETAILS ON SHEET E.4.1 FOR REQUIREMENTS.
- MECHANICAL, BATHS SHALL BE CONNECTED TO NORMAL BRANCH CIRCUIT SC-15 AND EMERGENCY BRANCH CIRCUIT EM-15 VIA GENERATOR TRANSFER DEVICE (GTD) BY BODINE OR APPROVED EQUAL. REFER TO DETAILS ON SHEET E.4.1 FOR REQUIREMENTS.
- FOR 911 ALARM SYSTEM, CONTRACTOR SHALL PROVIDE CONDUITS WITH PULL STRINGS AND JUNCTION BOXES. WIRING, SPEAKERS AND LIGHTING FIXTURES BY OTHERS. 911 LIGHTS SHALL BE COORDINATE WITH THE OH DOOR TRACKS.
- CONTRACTOR TO COORDINATE LIGHTING FIXTURE TYPE (D) IN APPARATUS BAY AREA WITH THE OH DOOR MOTORS AND TRACKS.

**LIGHTING CONTROL PANELS**

- LM24** MASTER CONTROL PANEL  
24 RELAYS, UL924 LISTED FOR EMERGENCY LIGHTING  
MASTER PANEL WITH TIMECLOCK
- LM4** SLAVE CONTROL PANEL  
4 RELAYS  
SLAVE PANEL (NO TIMECLOCK)
- 1B** 1-BUTTON DIGITAL SWITCH WITH OVERRIDE
- 2B** 2-BUTTON DIGITAL SWITCH WITH OVERRIDE
- 4B** 4-BUTTON DIGITAL SWITCH WITH OVERRIDE
- MB** MASTER OVER-RIDE BUTTONS

**SENSOR LEGEND:**

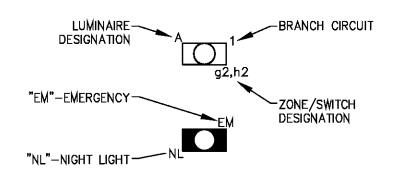
- OS1** WALL MOUNTED DUAL TECH WALL SWITCH OCCUPANCY SENSOR # OSD-PDT-WH BY SENSOR SWITCH. PROJECT WITH MANUAL OVER-RIDE SWITCH.
- DSS** CEILING MOUNTED DUAL TECH LOW VOLTAGE OCCUPANCY SENSOR # CM-PDT-10 BY SENSOR SWITCH, WITH POWER PACK (PP).

**SENSOR NOTES:**

- PROVIDE SENSORS MANUFACTURED BY SENSOR SWITCH OR APPROVED EQUAL.
- PROVIDE A POWER PACK IF NEEDED. POWER PACK IS CONTROLLED BY LOW VOLTAGE SENSOR. LOCATED PP AT ACCESSIBLE CEILING.
- ADDITIONAL SENSORS MAY BE REQUIRED TO PROVIDE COMPLETE COVERAGE DEPENDING ON PARTITION HEIGHT/PLACEMENT, FURNITURE PLACEMENT, EQUIPMENT HEIGHT/PLACEMENT AND SHELVING HEIGHT/PLACEMENT. CONSULT MFR REPRESENTATIVE PRIOR TO ROUGH-IN.
- SENSOR MASKING KITS MAY BE REQUIRED TO LIMIT COVERAGE DEPENDING ON YOUR REQUIREMENTS. CONSULT MFR REPRESENTATIVE PRIOR TO ROUGH-IN.
- ALL SENSORS AND EQUIPMENT SHALL FAIL SAFE IN ON FUNCTION IN EVENT OF A DEVICE/ELECTRONICS FAILURE
- ELECTRICAL CONTRACTOR SHALL SUBMIT TO ENGINEER FOR REVIEW AND APPROVAL A COMPLETE OCCUPANCY SENSOR PACKAGE WHICH INCLUDES SENSOR COVERAGE AND LAYOUTS IN FLOOR PLAN, RISER AND WIRING DIAGRAMS, MANUFACTURER CUT SHEETS AND INSTALLATION INSTRUCTIONS.

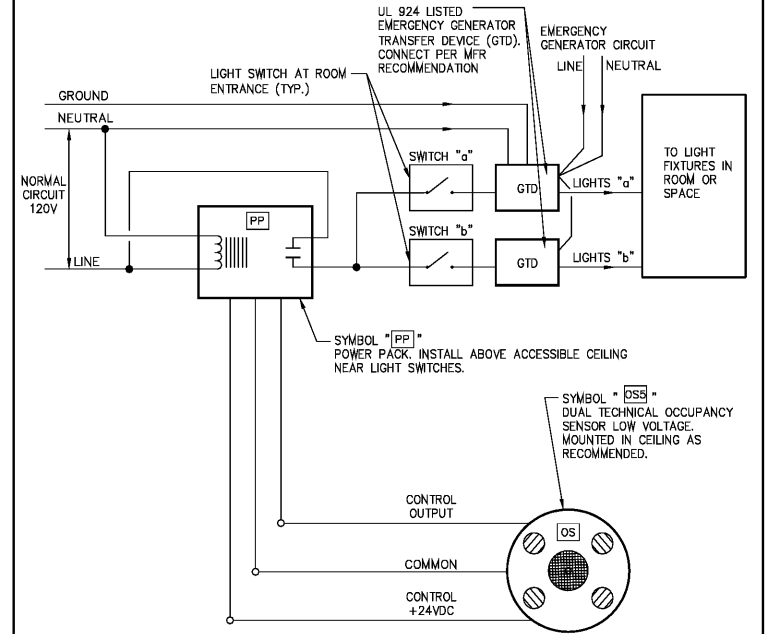
**LIGHTING CONTROL NOTES:**

- PROVIDE LIGHTING CONTROL PANELS MANUFACTURED BY LIGHTING CONTROL DESIGN (LCD) OR APPROVED EQUAL.
- SINGLE GANG SWITCHES WILL BE LOCATED AT SPECIFIC LOCATIONS FOR LOCAL OVERRIDE OF LIGHTING (SEE PLANS).
- THE MASTER CONTROL PANEL SHALL BE UL924 LISTED FOR EMERGENCY LIGHTING AND FAIL SAFE IN ON FUNCTION IN EVENT OF A DEVICE/ELECTRONICS FAILURE (EMERGENCY LIGHTS SHALL OPERATE).

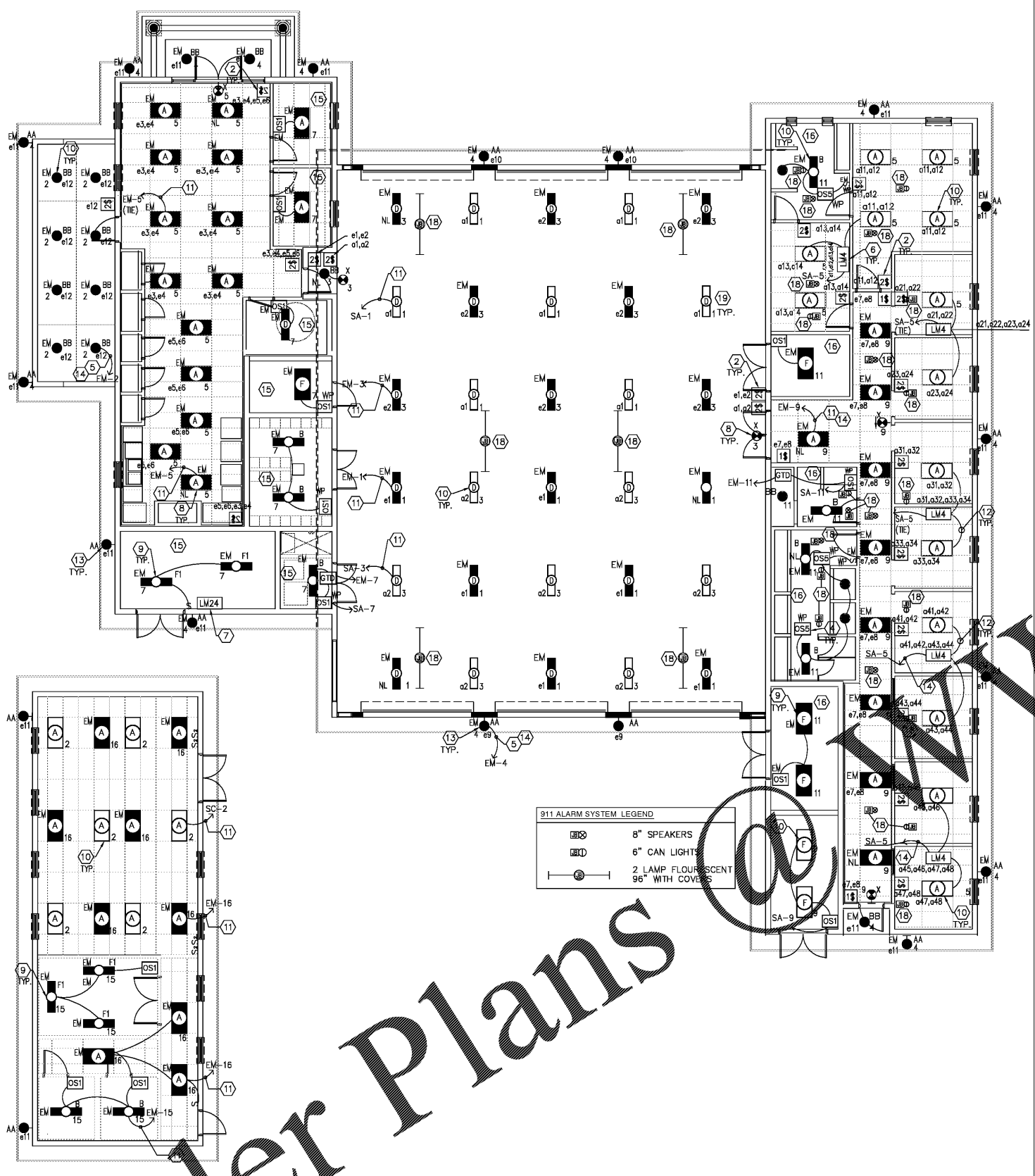


- ALL NORMAL BRANCH CIRCUITS TERMINATED AT PANEL 'SA' OR 'SC'  
- ALL EMERGENCY BRANCH CIRCUITS TERMINATED AT PANEL 'EM'

LIGHT FIXTURE DESIGNATIONS  
NOT TO SCALE



**LIGHTING CONTROL DIAGRAM-CEILING MOUNTED SENSOR AND GENERATOR TRANSFER DEVICE (GTD)**  
NOT TO SCALE



**ELECTRICAL LIGHTING PLAN**  
SCALE: 1/8" = 1'-0"

Order Plans



GRINER ENGINEERING, INC. 1628 First Avenue North St. Petersburg, Florida 33713 Phone: (727)-822-2335 Fax: (727)-821-3361 Certificate of Authorization #3173	Date: 06-15-2017 Drawn: HH Designed: HH EOR: JAR Job no.: 17049
--	---



**OFFICE OF TAMPA**  
CONTRACT ADMINISTRATION  
DEPARTMENT  
PLANNING AND DESIGN DIVISION  
105 E. JACKSON STREET 4 NORTH  
TAMPA, FLORIDA 33602  
P: 813. 274. 8456 - F: 813. 274. 8080  
url: www.tampagov.net

James E. Jackson, Jr. AIA, NOMA  
City Architect  
Edward D. Rice, AIA  
Project Architect  
Kevin L. Henka, AIA  
Project Architect  
Thomas A. Hester, Sr., AIA, NOMA  
Project Architect  
David R. Pagitt  
Supervisor, Architectural Drafting  
Kinsey C. Tillman  
Drafting Technician  
Jerry P. Sanders  
Drafting Technician  
Byron K. Thomas, LEED AP  
Drafting Technician

**MEP CONSULTANT**  
GRINER ENGINEERING, INC.  
1628 1st. AVENUE NORTH  
ST. PETERSBURG, FL 33713

**STRUCTURAL CONSULTANT**  
BILLER REINHART  
STRUCTURAL GROUP, INC.  
4014 GUNN HWY. SUITE 248  
TAMPA, FL 33713

**CIVIL CONSULTANT**  
B M CIVIL LLC  
12315 WYCLIFF PLACE  
TAMPA, FL 33626

**LANDSCAPE CONSULTANT**  
DAVID CONNER & ASSOCIATES  
1503 W. SWANN AVENUE SUITE 255  
TAMPA, FL 33606

**FIRE STATION 23**  
20770 TROUT CREEK DR.  
TAMPA, FL 33647

**DPW FILE NUMBER**

**DPW NUMBER**  
17-C-00037

**ISSUE DATE**  
07-28-2017

**DRAWN BY**

**REVISIONS**


**SEAL**

Jose A Rosario, P.E. FL. 74457

**SCALE:** 1/8" = 1'-0"

**ELECTRICAL LIGHTING PLAN**

**SHEET NUMBER**

E2.1

X OF X

