

**GENERAL NOTES**

- KEY NOTES**
- CONCRETE APRON WITH EXPANSION JOINTS AS SHOWN, INDICATING PANELS. SEE PANEL DETAIL SHEET A-2.1
  - SAW CUT CONTROL JOINTS IN CROSS PATTERN
  - NEW TRAINING ROOM
  - EXPANSION JOINTS
  - 5' SIDEWALK WITH CONTROL JOINTS AT 5'-0" O. C. AND EXPANSION JOINTS AT 25'-0" O. C. - PROVIDE MEDIUM BROOM FINISH WITH 3" SMOOTH TROWEL EDGE AND BROOM FINISH CHECKER BOARD. COORDINATE IN FIELD DURING LAYOUT WITH C.O.T. ARCHITECT.
  - FLAGPOLE. LOCATE IN CENTER OF 5'x10' AREA
  - NEW FIRE STATION
  - REGULAR SPACES. (SEE CIVIL DWGS.)
  - HANDICAP SPACES. (SEE CIVIL DWGS.)
  - INSTALL NEW FIRE HYDRANT (SEE CIVIL DRAWINGS)
  - FOUR STEEL WEDGES WELDED TO SLEEVE EACH 90 DEGREES TO CENTER POLE TYP.
  - ACCESS DRIVE - SEE CIVIL DRAWINGS
  - WATER SERVICE CONNECTION LOCATION - 15' x 20' CLEAR - SEE CIVIL DRAWINGS
  - POWER TRANSFORMER - SEE CIVIL AND ELECTRICAL DRAWINGS
  - PROPERTY LINE
  - FINISH GRADE
  - L.F. TANK FOR EMERGENCY GENERATOR
  - HYAC CHILLER - SEE MECHANICAL DWGS.
  - 3/4" DIAMETER STEEL GROUND SPIKE
  - DUMPSTER - SEE CIVIL DWGS.
  - 6'-0" SIDEWALK AND 5'-0" SIDEWALK ALONG WEST SIDE, PROVIDE CONTROL JOINTS AT 5'-0" O.C. AND EXPANSION JOINTS AT 25'-0" O.C. - VERIFY IN FIELD FOR EXACT LOCATIONS
  - STEEL SUPPORT PLATE 6" SQUARE WELDED TO SPIKE
  - SITE LIGHTING - SEE ELECTRICAL DWGS.
  - EXISTING TREES ON SITE TO REMAIN
  - 8" THICK CONCRETE APRON, COORDINATE WITH CIVIL DWGS.
  - EMERGENCY GENERATOR
  - CONCRETE SIDEWALK SEE CIVIL DRAWINGS
  - 10' BUFFER
  - 15' BUFFER
  - ASPHALT PARKING LOT SEE CIVIL DWGS.
  - 16GA. CORRUGATED GALVANIZED STEEL FOUNDATION SLEEVE.
  - DRY SAND TAMPED IN AFTER PLUMBING.
  - FOUR HARDWOOD WEDGES (TYP.).
  - SEALANT (TYP.).
  - SPUN ALUMINUM FLASH COLLAR
  - 35'+ HIGH, CONE TAPERED ALUMINUM FLAG POLE.
  - CONCRETE SLAB WITH 1-#5 REBAR FOUR SIDES. SEE CIVIL DRAWINGS.
  - 3/4" EXPANSION JOINT MATERIAL.
  - EXISTING CONCRETE SIDEWALK



**CITY OF TAMPA**  
CONTRACT ADMINISTRATION  
DEPARTMENT  
PLANNING AND DESIGN DIVISION  
305 E. JACKSON STREET 4 NORTH  
TAMPA, FLORIDA 33602  
P: 813.274.8455 - F: 813.274.8080  
WWW.TAMPA.GOV

James E. Jackson, J. AIA, NOMA  
City Architect  
Edward D. Rios, AIA  
Project Architect  
Kevin L. Harlow, AIA  
Project Architect  
Thomas A. Hester, Sr., AIA, NOMA  
Project Architect  
Kasey C. Tillman  
Drafting Technician  
Jarry P. Sanders  
Drafting Technician  
Byron K. Thomas, LEED GA  
Drafting Technician

**MEP CONSULTANT**  
GRINER ENGINEERING, INC.  
1628 1st. AVE. NORTH  
ST. PETERSBURG, FL 33713

**STRUCTURAL CONSULTANT**  
BILLER REINHART  
STRUCTURAL GROUP, INC.  
4014 GUNN HWY. SUITE 248  
TAMPA, FL 33713

**CIVIL CONSULTANT**  
B M CIVIL LLC  
12315 WYCLIFF PLACE  
TAMPA, FL 33626

**LANDSCAPE CONSULTANT**  
DAVID CONNER + ASSOC.  
15025 W. SWANN AVE. SUITE 255  
TAMPA, FL 33626

**FIRE STATION 23**  
20770 CROSS CREEK DR.  
TAMPA, FL 33627

**DPW FILE NUMBER**

**DPW NUMBER**  
17-C-00037

**ISSUE DATE**  
JULY 28, 2017

**DRAWN BY**  
KINBEY TILLMAN

**REVISIONS**

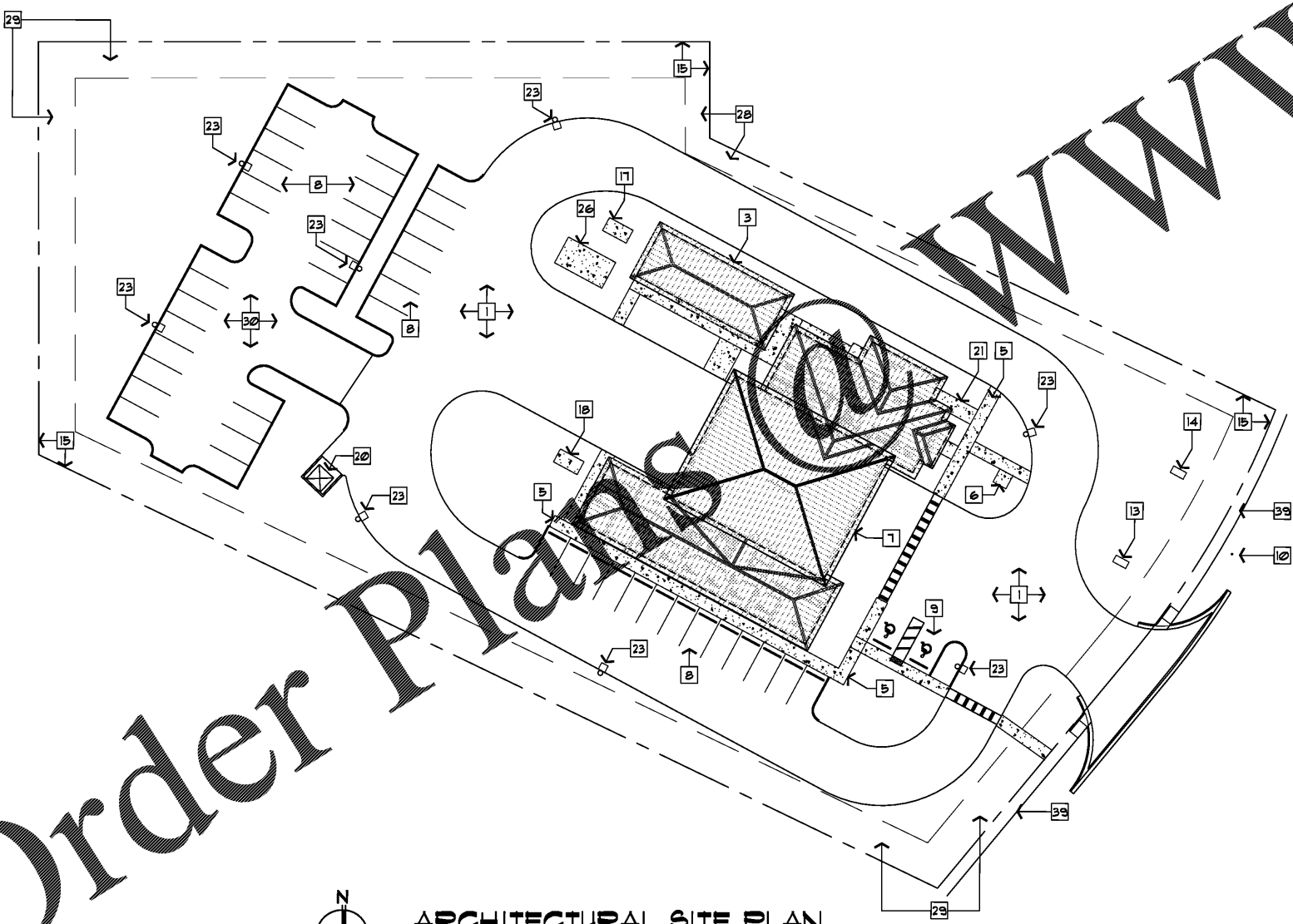

**SEAL**

**SCALE:**

**SHEET NAME**

**SHEET NUMBER**  
A-11

X OF X



**ARCHITECTURAL SITE PLAN**  
SCALE 1" = 30'-0"



Order Plans

WWW.LDILLING.COM