

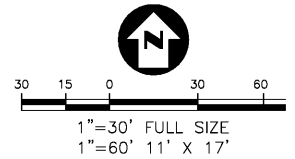
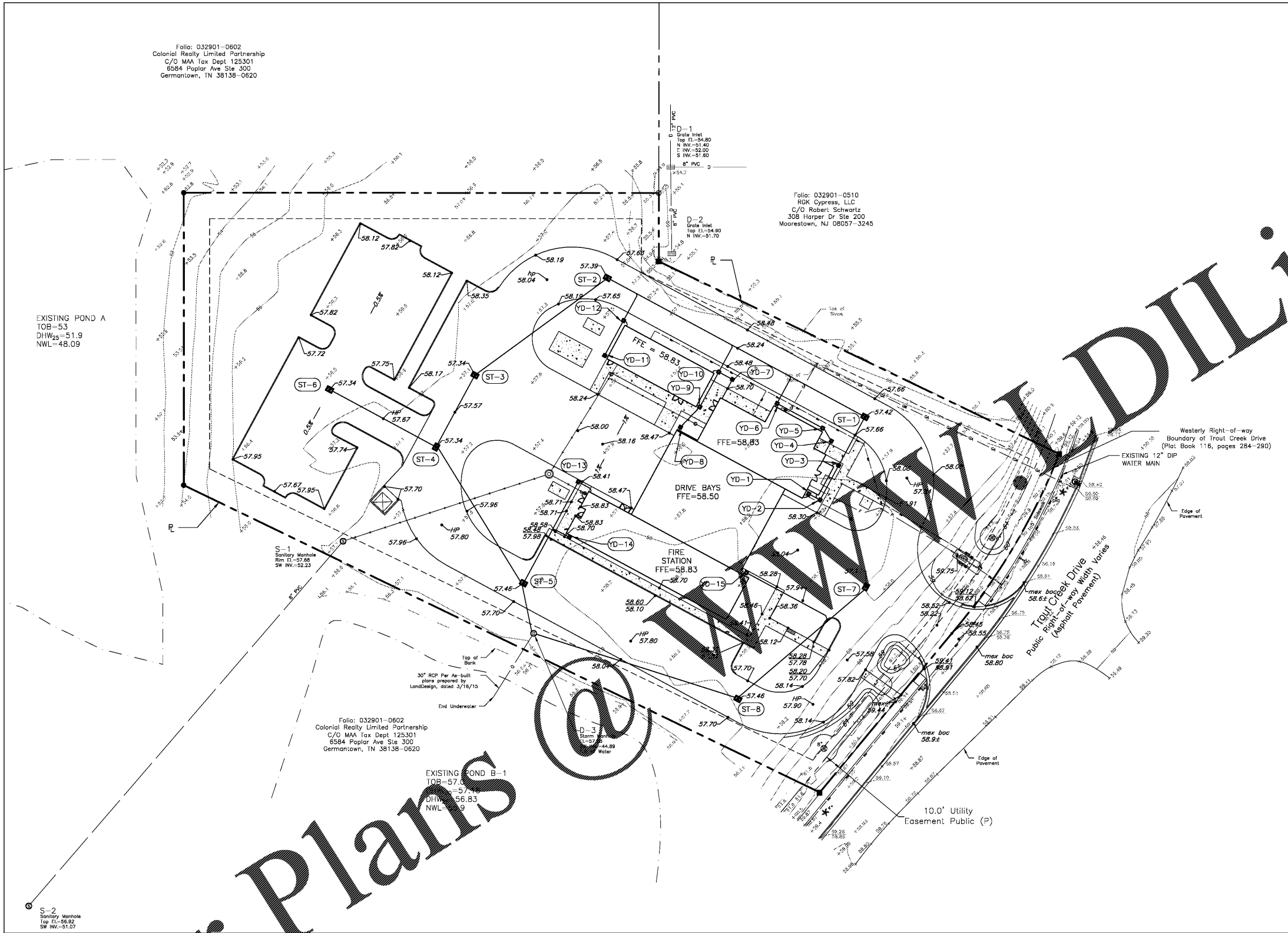
Folio: 032901-0602  
 Colonial Realty Limited Partnership  
 C/O MAA Tax Dept. 125301  
 6584 Poplar Ave Ste 300  
 Germantown, TN 38138-0620

Folio: 032901-0510  
 RGK Cypress, LLC  
 C/O Robert Schwartz  
 308 Harper Dr Ste 200  
 Moorestown, NJ 08057-3245

Folio: 032901-0602  
 Colonial Realty Limited Partnership  
 C/O MAA Tax Dept. 125301  
 6584 Poplar Ave Ste 300  
 Germantown, TN 38138-0620

EXISTING POND B-1  
 TOB=57.0  
 DIW=56.83  
 NWL=56.9

EXISTING POND A  
 TOB=53  
 DIW=51.9  
 NWL=48.09



**PAVING, GRADING AND DRAINAGE NOTES:**

1. UNLESS DESIGNATED OTHERWISE ALL ELEVATIONS REFERENCE FINISHED LOT ELEVATIONS. BACK OF CURB ELEVATIONS SHALL BE EQUAL TO THE FINISHED PAVEMENT ELEVATION PLUS THE HEIGHT OF THE MARKED CURB.
2. CENTER OF CONCRETE BURNING BOARD (WHEEL STOP) SHALL BE SET 30" FROM END OF PARKING STALL.
3. UNLESS DESIGNATED OTHERWISE ALL CURB SHOWS SHALL BE TYPE D PER FDOT STD INDEX 300.
4. DETECTABLE WARNING SURFACE (DWS) SHALL BE IN ACCORDANCE WITH FDOT DESIGN STANDARD INDEX 304. THE DWS SYSTEM SHALL CONSIST OF A PRODUCT ON THE FDOT QUALIFIED PRODUCT LIST FOR SPECIFICATION SECTION 527. COLOR SHALL BE RED.
5. UNLESS OTHERWISE NOTED CONSTRUCT SIDEWALK IN ACCORDANCE WITH FDOT STD INDEX 310



**CITY OF TAMPA**  
 CONTRACT ADMINISTRATION  
 DEPARTMENT  
 PLANNING AND DESIGN DIVISION  
 100 E JACKSON STREET 4 NORTH  
 TAMPA, FLORIDA 33602  
 P: 813.274.8466 - F: 813.274.8080  
 WWW.TAMPA.GOV

James E. Jackson, J. AIA, NOMA  
 City Architect  
 Edward D. Rice, AIA  
 Project Architect  
 Kevin L. Hurdin, AIA  
 Project Architect  
 Thomas A. Hester, Sr., AIA, NOMA  
 Project Architect

Krazy C. Tillman  
 Drafting Technician  
 Jerry P. Sanders  
 Drafting Technician  
 Byron K. Thomas, LEED AP  
 Drafting Technician

**MEP CONSULTANT**  
 GRINER ENGINEERING, INC.  
 1628 1st AVENUE NORTH  
 ST. PETERSBURG, FL 33713

**STRUCTURAL CONSULTANT**  
 BILLER REINHART  
 STRUCTURAL GROUP, INC.  
 4014 GUNN HWY. SUITE 248  
 TAMPA, FL 33713

**CIVIL CONSULTANT**  


**LANDSCAPE CONSULTANT**  
 DAVID CONNER & ASSOCIATES  
 1509 W. SWANN AVENUE  
 SUITE 255  
 TAMPA, FL 33606


**FIRE STATION 23**  
 20770 TROUT CREEK DR.  
 TAMPA, FL 33647


**DPW FILE NUMBER**

**DPW NUMBER**  
 17-C-00037

**ISSUE DATE**  
 ???

**DRAWN BY**  
 JAM

**REVISIONS**  



**SEAL**  


Jesus A. Merly, PE FL Reg No. 58113  
 Elevations shown within this plan set are based on North American Vertical Datum (NAVD 1988)

**PAVING, GRADING AND DRAINAGE PLAN**

**SHEET NUMBER:**  
 C-2

**Order Plans**

CALL 48 HOURS BEFORE YOU DIG  
 IT'S THE LAW! DIAL 811  
  
 Know what's below. Call before you dig.  
 SUNSHINE STATE ONE CALL OF FLORIDA, INC.