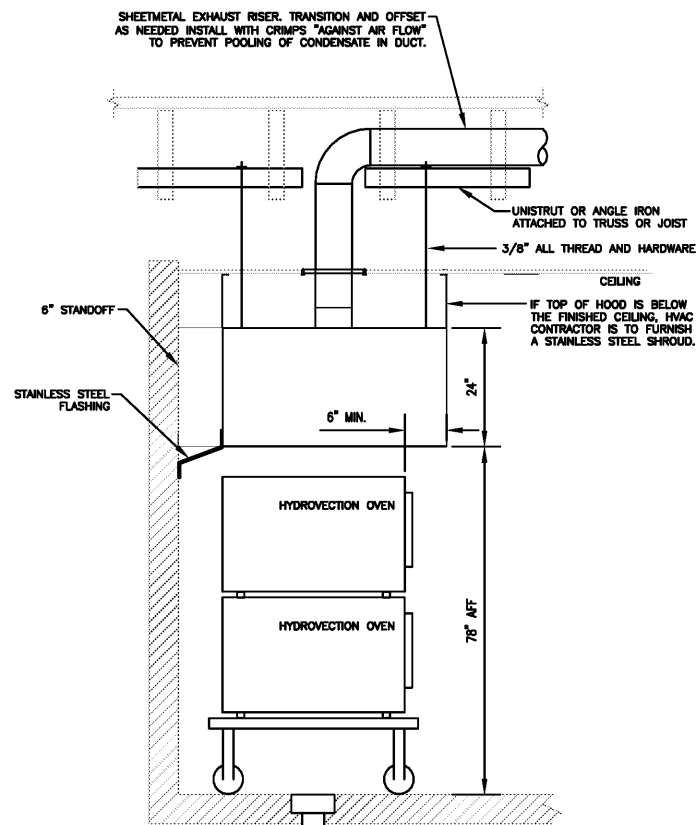


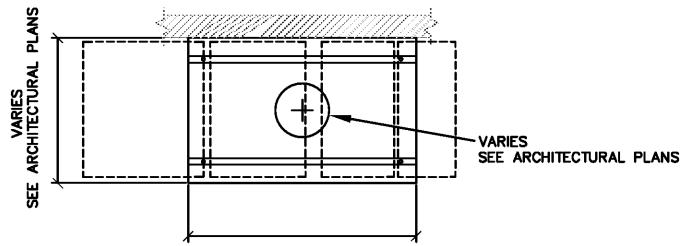
PLAN VIEW



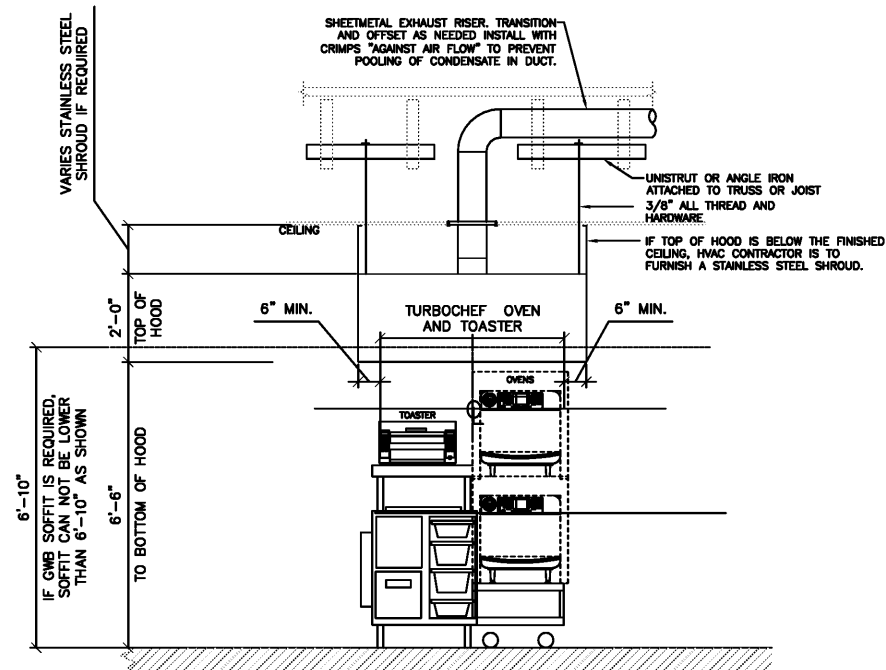
ELEVATION VIEW

4 OVEN HOOD - ELEVATION & PLAN

NONE



PLAN VIEW



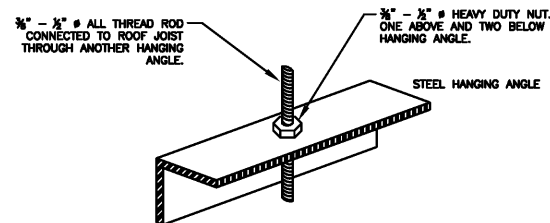
ELEVATION VIEW

5 SANDWICH HOOD - ELEVATION & PLAN

NONE

GENERAL NOTES

- A. ALL ELECTRICAL "FIELD" CONNECTIONS AND RELATED INTERCONNECTIONS BY CONTRACTOR.
- B. ALL PLUMBING "FIELD" CONNECTIONS AND RELATED INTERCONNECTIONS BY CONTRACTOR.
- C. ALL ASSOCIATED HANGER MATERIALS BY CONTRACTOR.
- D. ANY LIGHTS SHOWN INSTALLED BY THE MANUFACTURER, AND FACTORY PREWIRED PER THE PLANS, INTERCONNECTIONS BETWEEN HOODS AND TO SWITCHES BY CONTRACTOR.
- E. SEISMIC RESTRAINTS ARE RESPONSIBILITY OF CONTRACTOR.
- F. CONTRACTOR ASSUMES ALL RELATED RESPONSIBILITY FOR VERIFICATION OF DIMENSIONAL DATA CONTAINED ON THESE DOCUMENTS FOR ACCURACY, INTEGRATION, AND ADMINISTRATION OF CODE REQUIREMENTS IN EFFECT PRIOR TO ANY RELEASE FOR PRODUCTION OF EQUIPMENT SHOWN.
- G. SIGNED AND "APPROVED" COPIES OF THIS DOCUMENT MUST BE RECEIVED BY THE FACTORY PRIOR TO COMMENCEMENT OF FABRICATION.
- H. NOMINAL HOOD DIMENSIONS AS SHOWN ON DRAWINGS.
- I. THE HOODS INDICATED SHALL BE CAPTIVE-AIRE MODEL VHB OR APPROVED EQUAL. THE HOOD SHALL BE SINGLE WALL TYPE HOOD WITH NO BUILT-IN MAKE-UP AIR CAPABILITIES. THE HOOD COMPONENTS SHALL BE FABRICATED OF TYPE 304 STAINLESS STEEL WITH A #3 OR #4 POLISH, ON ALL EXPOSED SURFACES. THE HOOD SHALL BE PROVIDED WITH HANGING ANGLES ON EACH END OF THE HOOD. NOMINAL HOOD DIMENSIONS SHALL BE AS SHOWN ON DRAWINGS.



6 HANGING ANGLE DETAIL

NONE

HOODS SHALL BE BUILT IN COMPLIANCE WITH

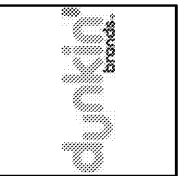


NFPA #96
NSF
UL 710 & ULC710 STANDARDS
E.T.L. LISTED 3054804-001

EXHAUST FAN AND GRILL WITH METAL CEILING TILES OVER THE OVENS AND TOASTERS IS THE MINIMUM REQUIREMENT PER DBI STANDARDS. THE ARCHITECT / ENGINEER IS RESPONSIBLE IN DETERMINING IF AN ACTUAL HOOD IS THE MINIMUM REQUIRED PER LOCAL JURISDICTION.

No.	Date	Description

This Drawing and all associated designs are the property of COPELAND ARCHITECTURE and shall be returned upon completion of work. Use or copy is permitted by contract only. Unauthorized use will be prosecuted.



A NEW DARK ROAST STORE
DUNKIN' DONUTS
for
SHULER DEVELOPMENT
STORE #357147
4880-4890 PORT ROYAL ROAD
SPRING HILL, TN 37174



EDWARD L. COPELAND, AIA
4511 CHAMBLEE DUNWOODY ROAD, SUITE E-1
ATLANTA, GEORGIA 30338
PH. 770.551.9525 FAX 770.551.9524
WWW.COPELANDARCHITECTURE.COM

DRAWN BY:	SP
CHECKED BY:	CAH
DATE:	06/22/17
SCALE:	
C.A. COMMISSION NUMBER:	1704
SHEET NAME:	MECHANICAL DETAILS

SHEET NUMBER
M1.2

WILLIAM F. BELL
Engineer
TN REG. # 105518
1702 Sheep Cliff Road
Hiwassee, GA 30546
(404) 897-7602