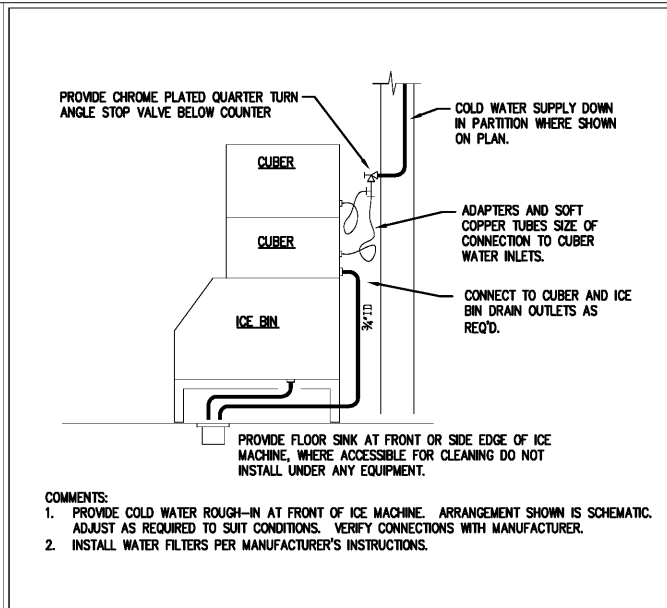


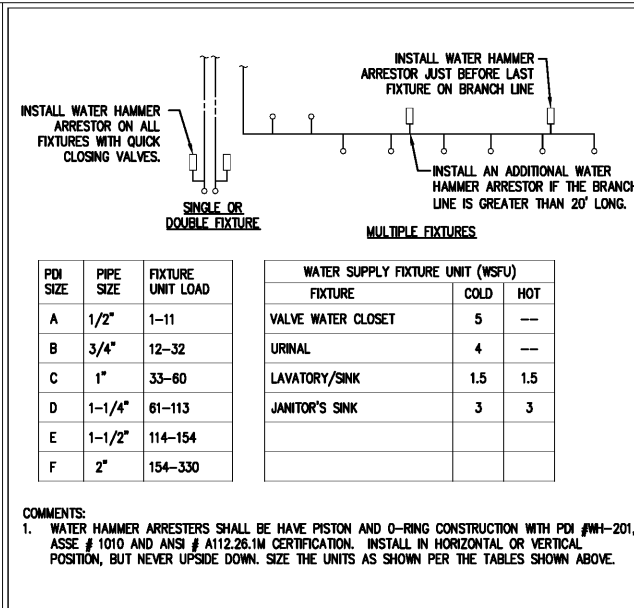
COMMENTS:
1. ARRANGEMENT SHOWN IS SCHEMATIC. ADJUST AS REQUIRED TO SUIT CONDITIONS. VERIFY CONNECTIONS WITH MANUFACTURER.

1 BEVERAGE WATER PIPING SCHEMATIC



COMMENTS:
1. PROVIDE COLD WATER ROUGH-IN AT FRONT OF ICE MACHINE. ARRANGEMENT SHOWN IS SCHEMATIC. ADJUST AS REQUIRED TO SUIT CONDITIONS. VERIFY CONNECTIONS WITH MANUFACTURER.
2. INSTALL WATER FILTERS PER MANUFACTURER'S INSTRUCTIONS.

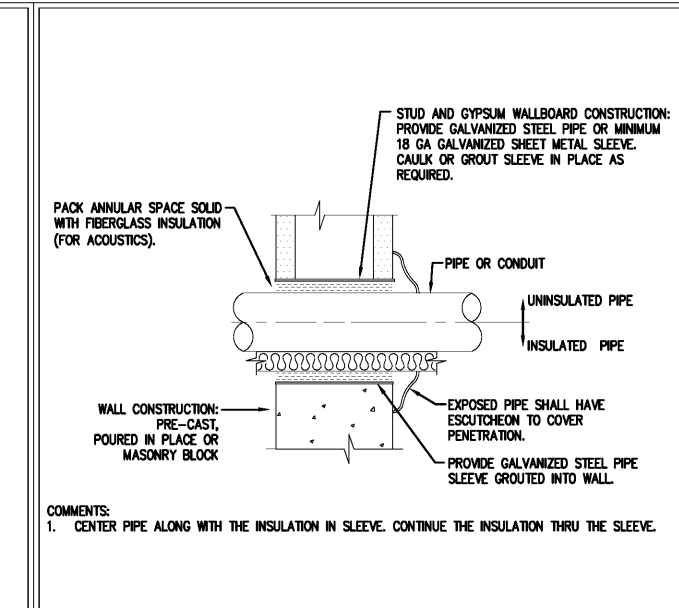
2 ICE MACHINE PIPING SCHEMATIC



PDI SIZE	PIPE SIZE	FIXTURE UNIT LOAD	WATER SUPPLY FIXTURE UNIT (WSFU)	
			FIXTURE	
A	1/2"	1-11	VALVE WATER CLOSET	5 ---
B	3/4"	12-32	URINAL	4 ---
C	1"	33-60	LAVATORY/SINK	1.5 1.5
D	1-1/4"	61-113	JANITOR'S SINK	3 3
E	1-1/2"	114-154		
F	2"	154-330		

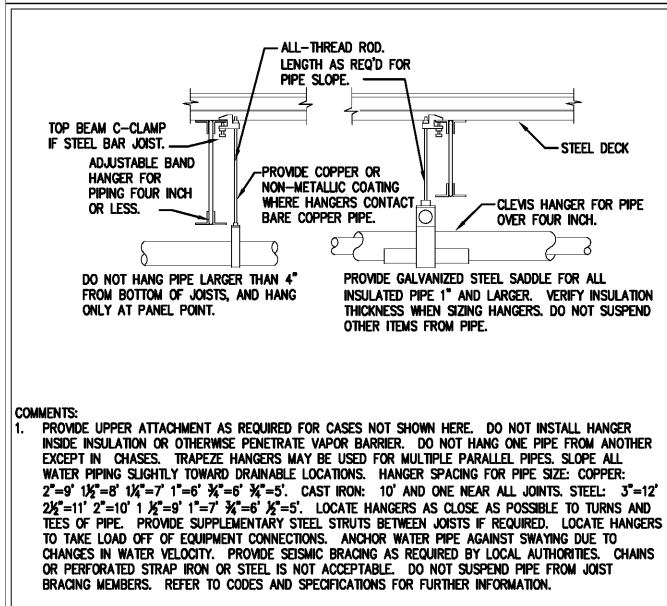
COMMENTS:
1. WATER HAMMER ARRESTERS SHALL BE HAVE PISTON AND O-RING CONSTRUCTION WITH PDI #WH-201, ASSE # 1010 AND ANSI # A112.28.1M CERTIFICATION. INSTALL IN HORIZONTAL OR VERTICAL POSITION, BUT NEVER UPSIDE DOWN. SIZE THE UNITS AS SHOWN PER THE TABLES SHOWN ABOVE.

3 WATER HAMMER ARRESTER DETAIL



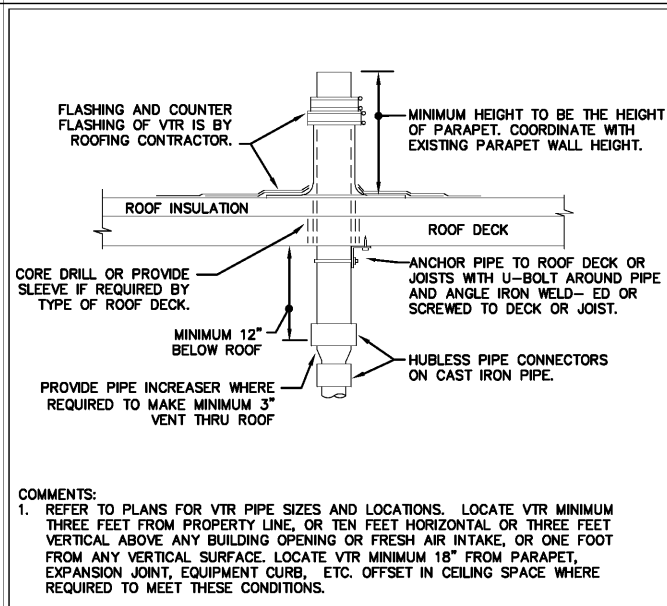
COMMENTS:
1. CENTER PIPE ALONG WITH THE INSULATION IN SLEEVE. CONTINUE THE INSULATION THRU THE SLEEVE.

4 PIPE PENETRATION (NON-RATED WALL)



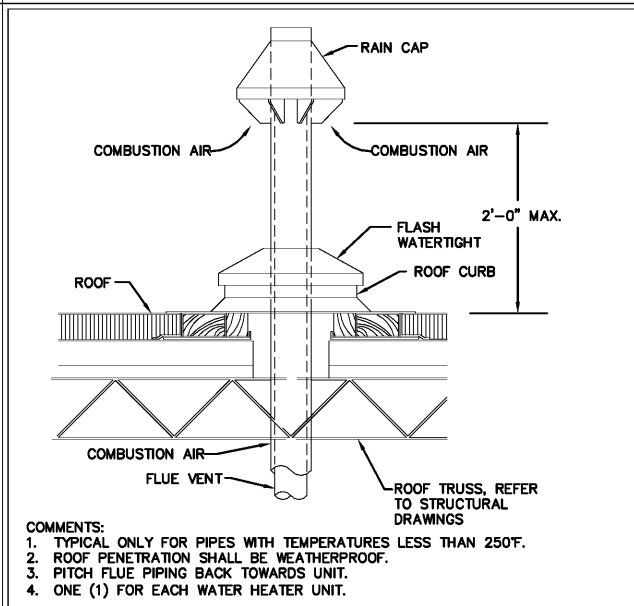
COMMENTS:
1. PROVIDE UPPER ATTACHMENT AS REQUIRED FOR CASES NOT SHOWN HERE. DO NOT INSTALL HANGER INSIDE INSULATION OR OTHERWISE PENETRATE VAPOR BARRIER. DO NOT HANG ONE PIPE FROM ANOTHER EXCEPT IN CHASES. TRAPEZE HANGERS MAY BE USED FOR MULTIPLE PARALLEL PIPES. SLOPE ALL WATER PIPING SLIGHTLY TOWARD DRAINABLE LOCATIONS. HANGER SPACING FOR PIPE SIZE: COPPER: 2"-9" 1 1/2"=8" 1 1/4"=7" 1"=6" 3/4"=6" 3/4"=5". CAST IRON: 10" AND ONE NEAR ALL JOINTS. STEEL: 3"-12" 2 1/2"=11" 2"=10" 1 1/2"=9" 1"=7" 3/4"=6" 3/4"=5". LOCATE HANGERS AS CLOSE AS POSSIBLE TO TURNS AND TEES OF PIPE. PROVIDE SUPPLEMENTARY STEEL STRUTS BETWEEN JOISTS IF REQUIRED. LOCATE HANGERS TO TAKE LOAD OFF OF EQUIPMENT CONNECTIONS. ANCHOR WATER PIPE AGAINST SWAYING DUE TO CHANGES IN WATER VELOCITY. PROVIDE SEISMIC BRACING AS REQUIRED BY LOCAL AUTHORITIES. CHAINS OR PERFORATED STRAP IRON OR STEEL IS NOT ACCEPTABLE. DO NOT SUSPEND PIPE FROM JOIST BRACING MEMBERS. REFER TO CODES AND SPECIFICATIONS FOR FURTHER INFORMATION.

5 PIPE HANGER DETAIL



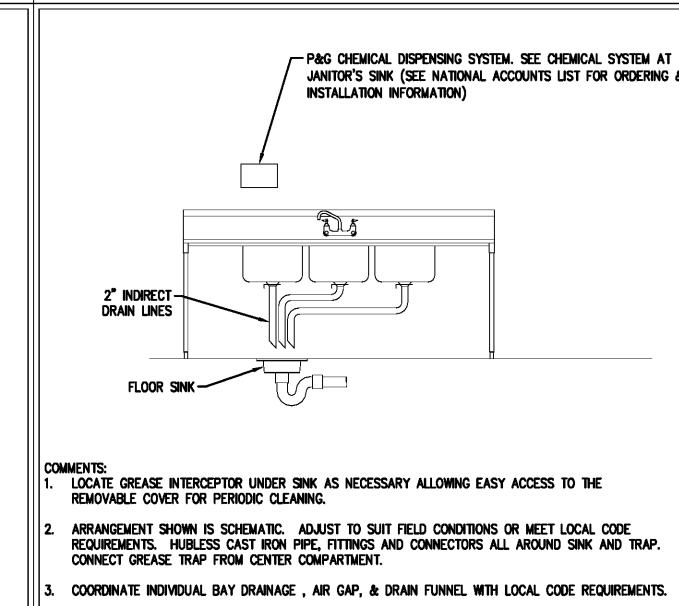
COMMENTS:
1. REFER TO PLANS FOR VTR PIPE SIZES AND LOCATIONS. LOCATE VTR MINIMUM THREE FEET FROM PROPERTY LINE, OR TEN FEET HORIZONTAL OR THREE FEET VERTICAL ABOVE ANY BUILDING OPENING OR FRESH AIR INTAKE, OR ONE FOOT FROM ANY VERTICAL SURFACE. LOCATE VTR MINIMUM 18" FROM PARAPET, EXPANSION JOINT, EQUIPMENT CURB, ETC. OFFSET IN CEILING SPACE WHERE REQUIRED TO MEET THESE CONDITIONS.

6 VENT THRU ROOF (VTR) DETAIL



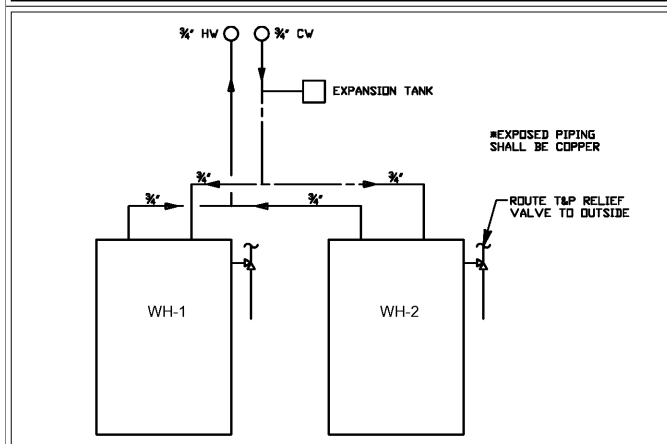
COMMENTS:
1. TYPICAL ONLY FOR PIPES WITH TEMPERATURES LESS THAN 250°F.
2. ROOF PENETRATION SHALL BE WEATHERPROOF.
3. PITCH FLUE PIPING BACK TOWARDS UNIT.
4. ONE (1) FOR EACH WATER HEATER UNIT.

7 CONCENTRIC VENT DETAIL

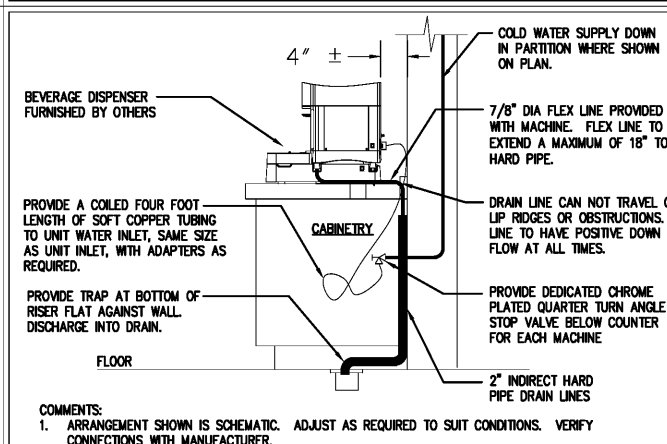


COMMENTS:
1. LOCATE GREASE INTERCEPTOR UNDER SINK AS NECESSARY ALLOWING EASY ACCESS TO THE REMOVABLE COVER FOR PERIODIC CLEANING.
2. ARRANGEMENT SHOWN IS SCHEMATIC. ADJUST TO SUIT FIELD CONDITIONS OR MEET LOCAL CODE REQUIREMENTS. HUBLESS CAST IRON PIPE, FITTINGS AND CONNECTORS ALL AROUND SINK AND TRAP. CONNECT GREASE TRAP FROM CENTER COMPARTMENT.
3. COORDINATE INDIVIDUAL BAY DRAINAGE, AIR GAP, & DRAIN FUNNEL WITH LOCAL CODE REQUIREMENTS.

8 3 COMPARTMENT SINK DETAIL

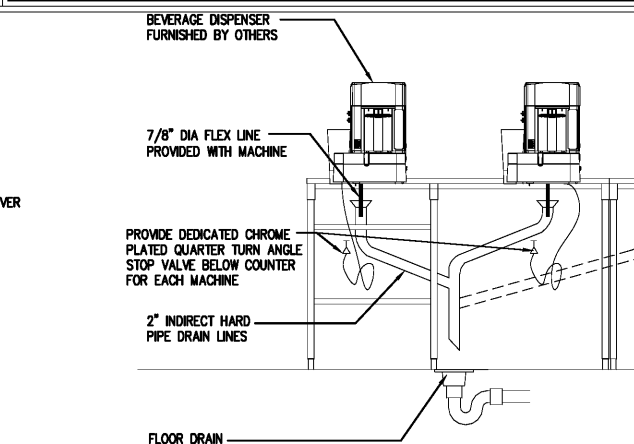


9 WATER HEATER PIPING DETAIL



COMMENTS:
1. ARRANGEMENT SHOWN IS SCHEMATIC. ADJUST AS REQUIRED TO SUIT CONDITIONS. VERIFY CONNECTIONS WITH MANUFACTURER.

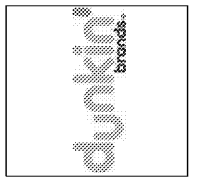
10 BEVERAGE W/ FLOOR DRAIN PIPING SCHEMATIC @ ISLAND OASIS (IO)



11 BEVERAGE W/ FLOOR DRAIN PIPING SCHEMATIC @ ISLAND OASIS (IO)

No.	Date	Description

This Drawing and all associated designs are the property of COPELAND ARCHITECTURE and shall be returned upon completion of work. Use or copy is permitted by contract only. Unauthorized use will be prosecuted.



A NEW DARK ROAST STORE
DUNKIN' DONUTS
for
SHULER DEVELOPMENT
STORE #357147
4880-4890 PORT ROYAL ROAD
SPRING HILL, TN 37174



EDWARD L. COPELAND, AIA
4511 CHAMBLEE DUNWOODY ROAD, SUITE E-1
ATLANTA, GEORGIA 30338
PH. 770.551.9525 FAX 770.551.9524
WWW.COPELANDARCHITECTURE.COM

DRAWN BY: SP
CHECKED BY: CAH
DATE: 06/22/17
SCALE:
C.A. COMMISSION NUMBER 1704
SHEET NAME PLUMBING DETAILS

SHEET NUMBER
P1.1

WILLIAM F. BELL
Engineer
TN REG. # 105518
1702 Sheep Cliff Road
Hawesee, GA 30056
(404) 897-7602