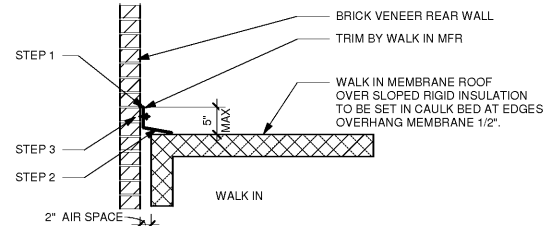
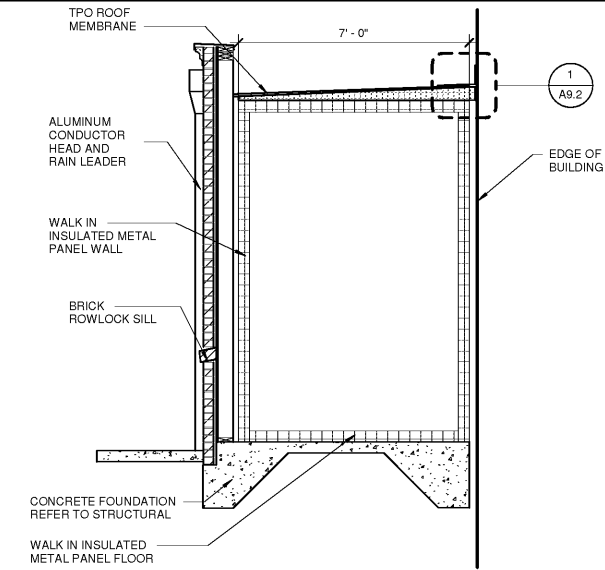


NOTE: IT IS IMPORTANT TO HOLD THE 5' OVERLAY ON ALL SIDES OF WALK-IN TO FULLY COVER HORIZONTAL SEAM BETWEEN WALL AND CEILING.

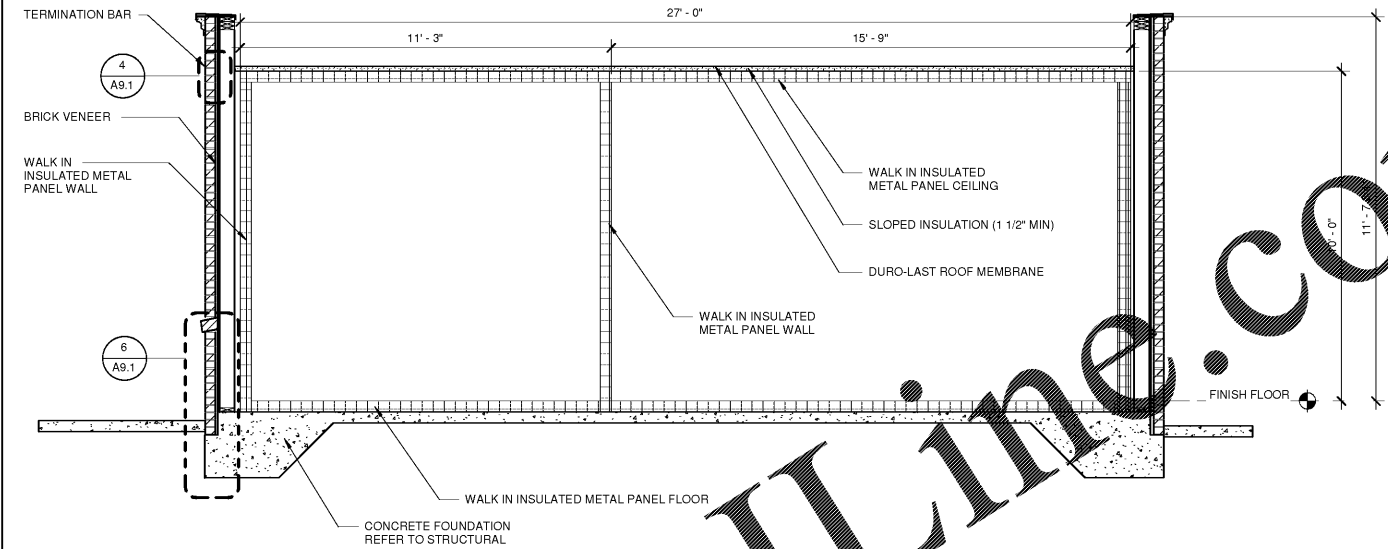


STEP #1 - PRIOR TO WALK-IN BEING INSTALLED THE G.C. WILL SAW CUT AND FASTEN ON SITE BUILDING FLASHING 5" ABOVE THE AREA WHERE THE WALK-IN WILL BE INSTALLED.
 STEP #2 - BUILDING FLASHING TO BE SEALED ON BENT OVER TOP OF MEMBRANE ROOF MATERIAL DURING WALK-IN INSTALLATION.
 STEP #3 - BUILDING FLASHING SECURED TO BUILDING WALL WITH TRIM BEING PROVIDED BY WALK IN MFG.

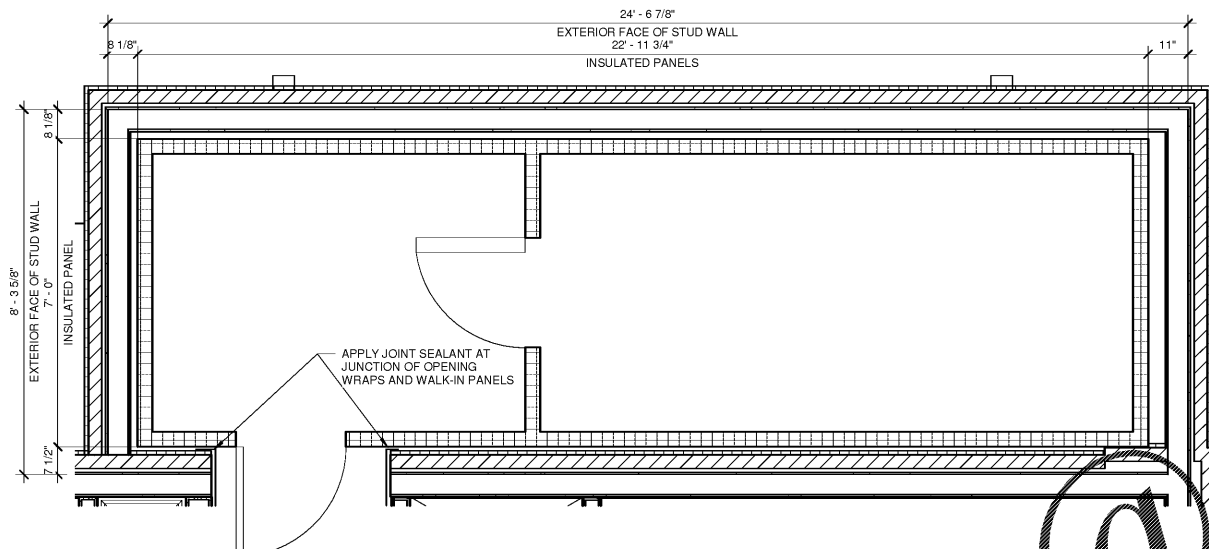
1 WALK IN DETAIL
A9.2 3/4" = 1'-0"



2 WALK IN SECTION
A9.2 3/8" = 1'-0"



3 WALK IN SECTION
A9.2 3/8" = 1'-0"

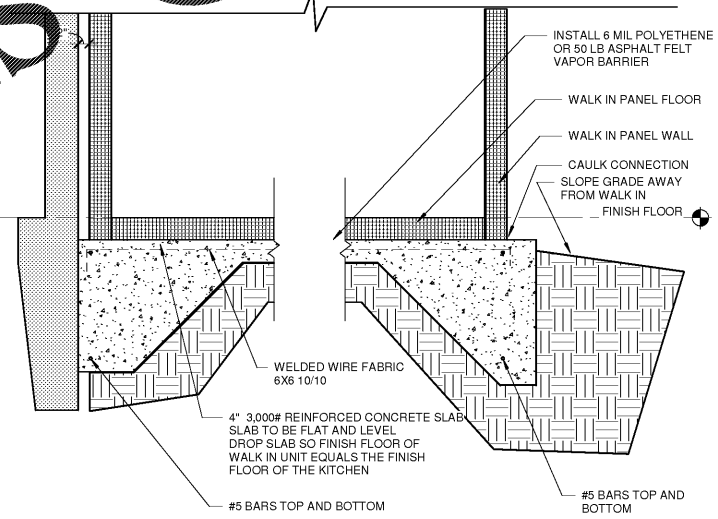


4 ENLARGED PLAN - WALK IN
A9.2 1/2" = 1'-0"

DETAILS FOR DOOR OPENING THROUGH BUILDING WALLS

DOOR HEIGHT	OPENING HEIGHT
66"	72"
72"	78"
78"	84"
84"	90"
90"	96"
96"	102"
102"	108"

A	B	C	D	E	F	G	H	J	K
24'	12"	48"	24"	24 1/2"	35 1/2"	17 3/4"	17 3/4"	20 1/2"	28 1/2"
26'	15"	48"	24"	33"	38"	18 3/4"	18 3/4"	21 1/2"	29"
30'	15"	48"	24"	40 1/2"	47 1/2"	20"	20 1/2"	25 1/2"	33"
36'	18"	48"	24"	43 1/2"	52"	23"	23 1/2"	28 1/2"	37 1/2"
42'	18"	48"	24"	50 1/2"	59 1/2"	26"	26 1/2"	32 1/2"	41 1/2"
48'	24"	48"	30"	57 1/2"	66 1/2"	29 1/2"	29 1/2"	36 1/2"	45 1/2"
60'	30"	48"	36"	64 1/2"	73 1/2"	32 1/2"	32 1/2"	40 1/2"	49 1/2"



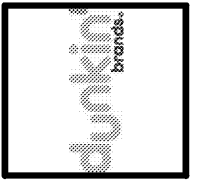
7 GENERIC WALK IN SLAB
A9.2 3/4" = 1'-0"

IF OTHER WALK IN SUPPLIER IS USED REFER TO SUPPLIER SPECIFICATIONS
 DETAIL 034C
 DRAWN 4/11/97
 REVISED 2/5/98
 REVISED 7/30/98
 REVISED 3/24/03
 (60)

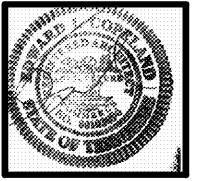
6 NORLAKE WALK IN DOOR DIMENENSIONS
A9.2 N.T.S.

No.	Date	Description

Design and all associated design is the property of COPELAND ARCHITECTURE and shall be returned upon completion of work. Use or copy is permitted by contract only. Unauthorized use will be prosecuted.



A NEW DARK ROAST STORE
 DUNKIN' DONUTS
 for
 SHULER DEVELOPMENT
 STORE 357147
 4880-4890 PORT ROYAL ROAD
 SPRING HILL, TN 37174



WALK IN DETAILS
 EDWARD L. COPELAND, AIA
 4511 CHAMBLEE DUNWOODY ROAD, SUITE E-1
 ATLANTA, GEORGIA 30338
 PH. 770.551.9525 FAX 770.551.9524
 WWW.COPELANDARCHITECTURE.COM

DRAWN BY: Designer
 CHECKED BY: Checker
 DATE: 07/07/17
 SCALE: AS NOTED
 C.A. COMMISSION NUMBER 1704
 SHEET NAME WALK IN DETAILS

SHEET NUMBER
A9.2