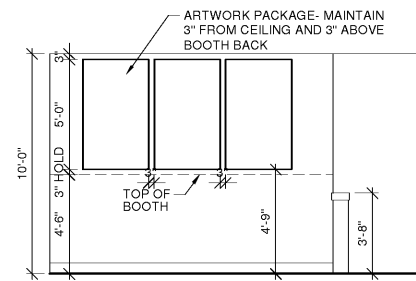
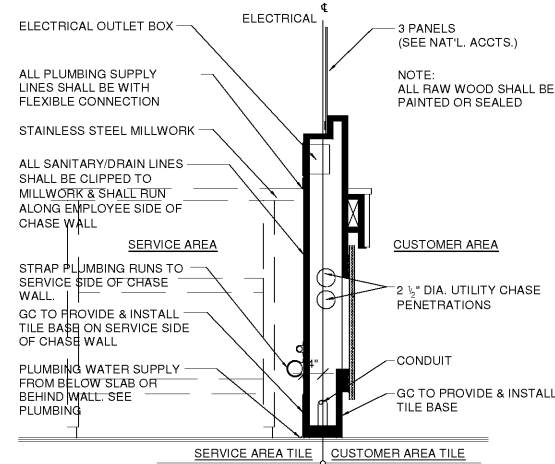


1 ADA SIGNAGE
A8.2 1 1/2" = 1'-0"

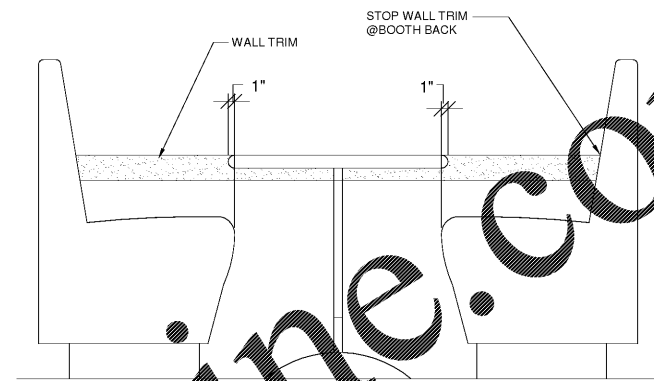


- NOTES:
- ARTWORK SHOULD ALWAYS BE PLACED 42" FROM FLOOR TO BOTTOM OF ARTWORK ON OPEN WALLS
 - ARTWORK TO BE INSTALLED WITH 3" SPACING BETWEEN PANELS
 - ARTWORK SHOULD ALWAYS BE PLACED 3" FROM TOP OF BOOTH
 - DEFAULT HEIGHT FOR ARTWORK IS 5'
 - USE 4' HIGH ARTWORK FOR CEILING HEIGHTS BELOW 8'-9"
 - USE 6' HIGH ARTWORK FOR CEILING HEIGHTS ABOVE 10'-6"
 - STORES THAT CANNOT ACCOMMODATE THIS MINIMUM WILL NOT HAVE ARTWORK

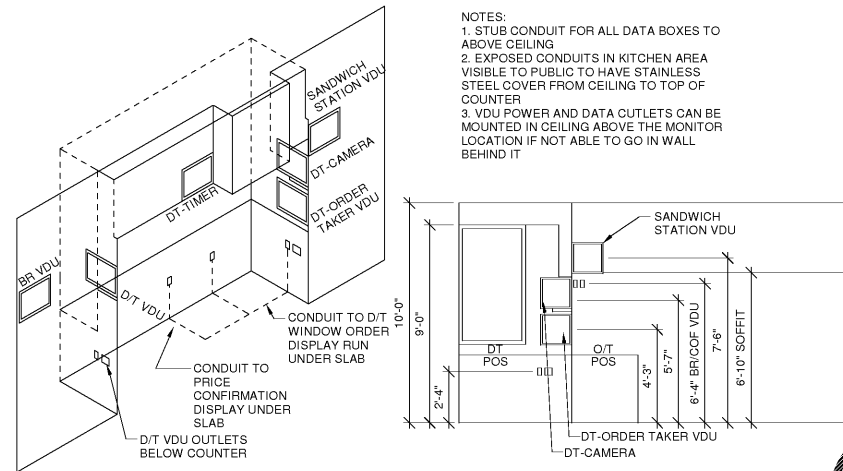
2 DETAIL AT ARTWORK
A8.2 1/4" = 1'-0"



3 MILLWORK CHASE DETAIL
A8.2 1" = 1'-0"

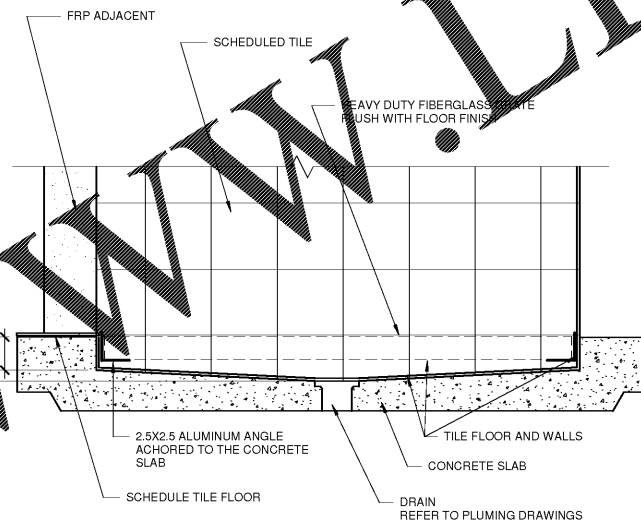


4 DETAIL AT BOOTH SEATING
A8.2 1" = 1'-0"



- NOTES:
- STUB CONDUIT FOR ALL DATA BOXES TO ABOVE CEILING
 - EXPOSED CONDUITS IN KITCHEN AREA VISIBLE TO PUBLIC TO HAVE STAINLESS STEEL COVER FROM CEILING TO TOP OF COUNTER
 - VDU POWER AND DATA OUTLETS CAN BE MOUNTED IN CEILING ABOVE THE MONITOR LOCATION IF NOT ABLE TO GO IN WALL BEHIND IT

5 DRIVE THRU AREA ISO
A8.2 1/4" = 1'-0"

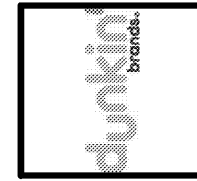


6 CART WASH DETAIL
A8.2 1 1/2" = 1'-0"

Order Plans @

No.	Date	Description

Design and all associated design documents are the property of COPELAND ARCHITECTURE and shall be returned upon completion of work. Use or copy is permitted by contract only. Unauthorized use will be prosecuted.



A NEW DARK ROAST STORE
DUNKIN' DONUTS
for
SHULER DEVELOPMENT
STORE 357147
4880-4890 PORT ROYAL ROAD
SPRING HILL, TN 37174



DETAILS - INTERIOR
EDWARD L. COPELAND, AIA
4511 CHAMBLEE DUNWOODY ROAD, SUITE E-1
ATLANTA, GEORGIA 30338
PH. 770.551.9525 FAX 770.551.9524
WWW.COPELANDARCHITECTURE.COM

DRAWN BY: Designer
CHECKED BY: Checker
DATE: 07/07/17
SCALE: AS NOTED
C.A. COMMISSION NUMBER 1704

SHEET NAME
DETAILS - INTERIOR
SHEET NUMBER
A8.2