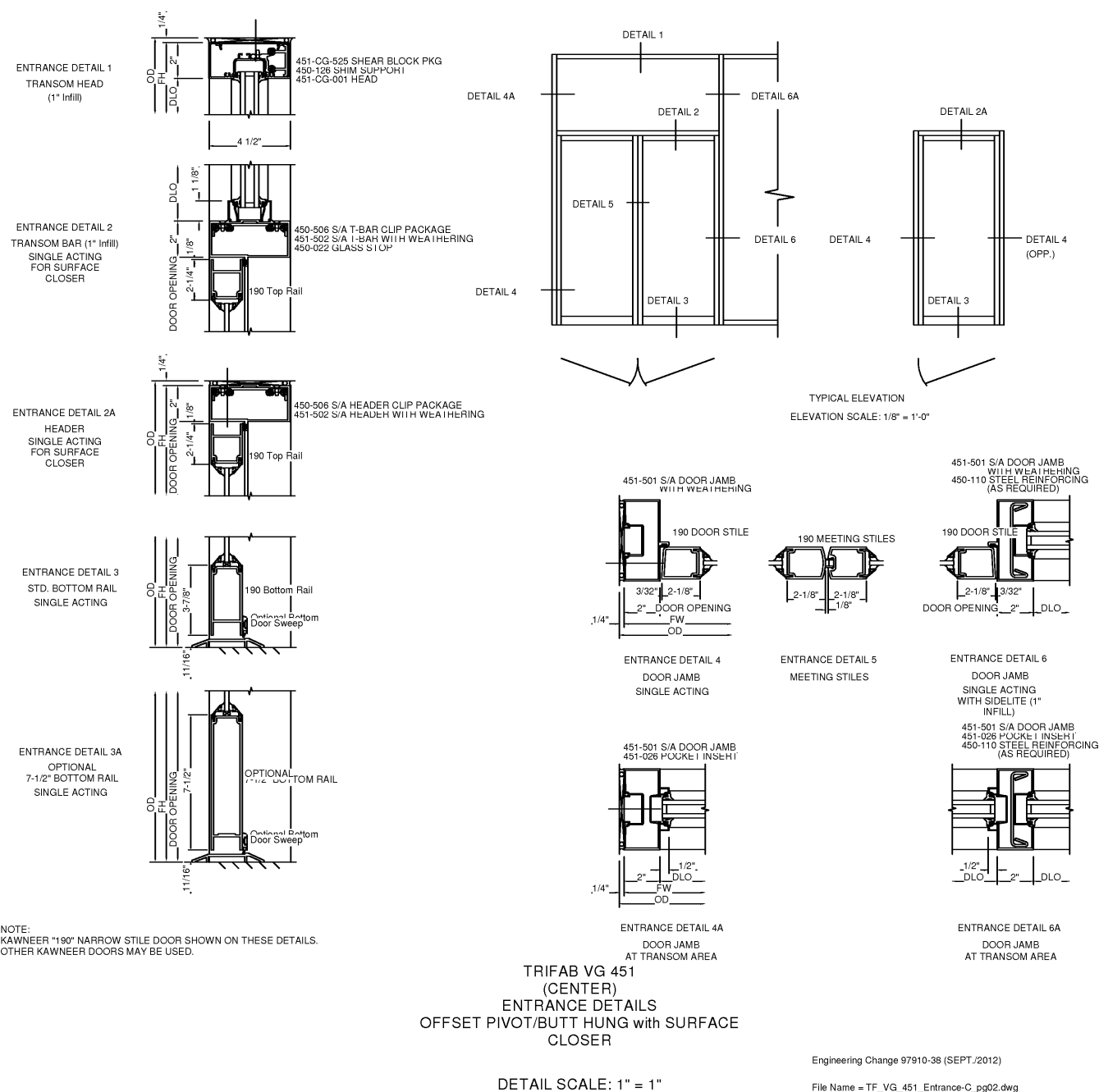


1
A7.3 KAWNEER TRIFAB 451
3" = 1'-0"

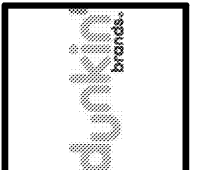


2
A7.3 KAWNEER TRIFAB 451 - ENTRANCE
3" = 1'-0"

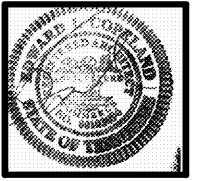
- STORE FRONT SYSTEM NOTES:**
1. ALUMINUM STORE FRONT SYSTEM TO BE KAWNEER TRIFAB 451 OR APPROVED ALTERNATE.
 2. THE GLAZING WILL BE 1" INSULATED GLASS PANELS.
 3. ALUMINUM STORE FRONT SYSTEM TO BE ANODIZED BRONZE

No.	Date	Description

This Drawing and all associated designs are the property of COPELAND ARCHITECTURE and shall be returned upon completion of work. Use or copy is permitted by contract only. Unauthorized use will be prosecuted.



A NEW DARK ROAST STORE
DUNKIN' DONUTS
for
SHULER DEVELOPMENT
STORE 357147
4880-4890 PORT ROYAL ROAD
SPRING HILL, TN 37174



STOREFRONT SYSTEM
EDWARD L. COPELAND, AIA
4511 CHAMBLEE DUNWOODY ROAD, SUITE E-1
ATLANTA, GEORGIA 30338
PH. 770.551.9525 FAX 770.551.9524
WWW.COPELANDARCHITECTURE.COM

DRAWN BY:
Designer
CHECKED BY:
Checker
DATE:
07/07/17
SCALE:
AS NOTED
C.A. COMMISSION NUMBER
1704

SHEET NAME
STOREFRONT SYSTEM

SHEET NUMBER

A7.3