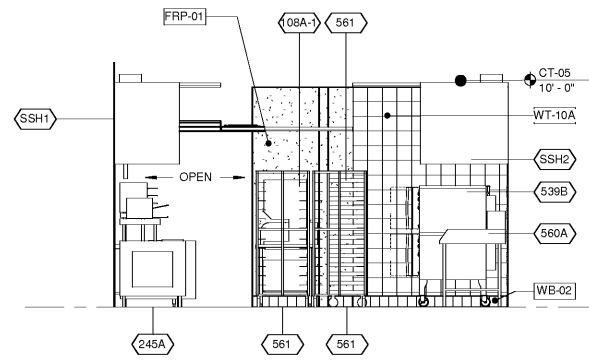
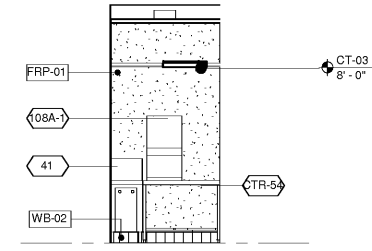


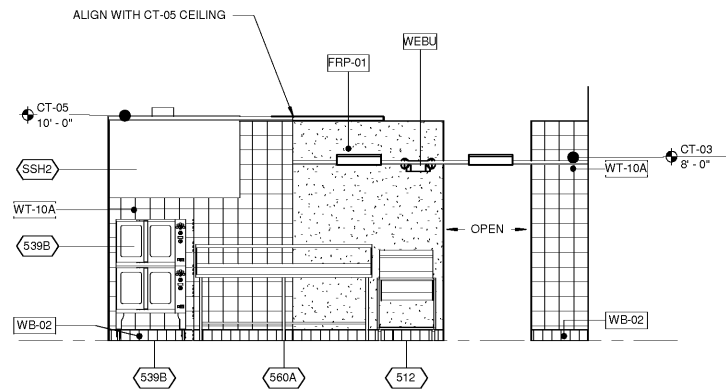
1 INTERIOR ELEVATION - KITCHEN
A6.3 1/4" = 1'-0"



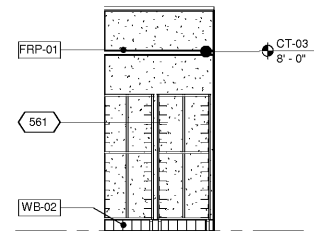
2 INTERIOR ELEVATION - KITCHEN
A6.3 1/4" = 1'-0"



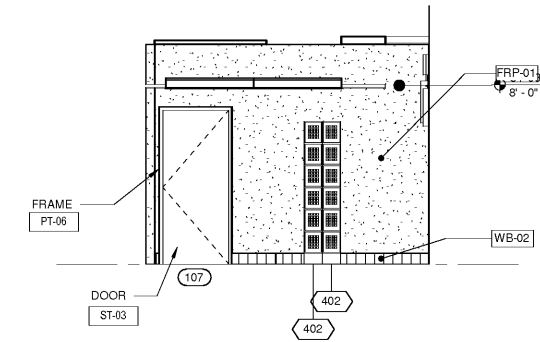
3 INTERIOR ELEVATION - KITCHEN - ICB
A6.3 1/4" = 1'-0"



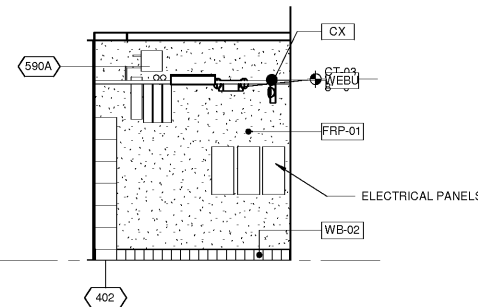
4 INTERIOR ELEVATION - KITCHEN - FINISHING TABLE
A6.3 1/4" = 1'-0"



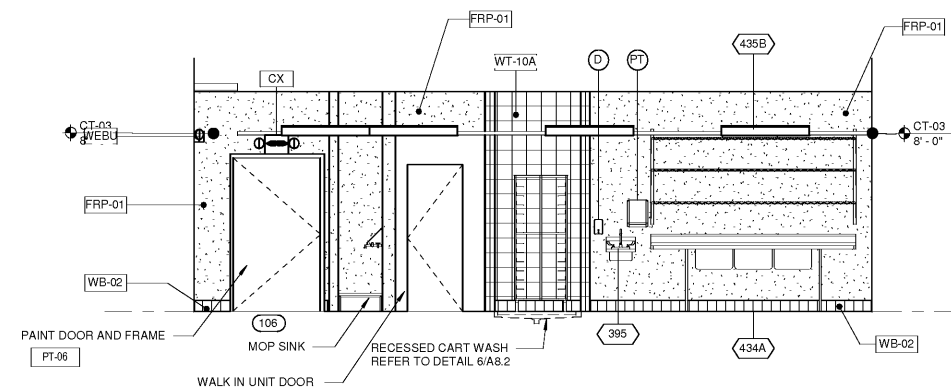
5 INTERIOR ELEVATION - KITCHEN - OVEN AREA
A6.3 1/4" = 1'-0"



6 INTERIOR ELEVATION - KITCHEN - OFFICE DOOR
A6.3 1/4" = 1'-0"



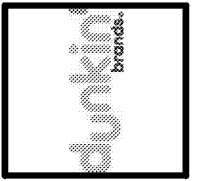
7 INTERIOR ELEVATION - KITCHEN - ELECTRICAL PANELS
A6.3 1/4" = 1'-0"



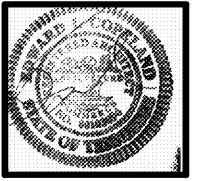
8 INTERIOR ELEVATION - KITCHEN - SINK AREA
A6.3 1/4" = 1'-0"

No.	Date	Description

The Drawing and all associated designs are the property of COPELAND ARCHITECTURE and shall be returned upon completion of work. Use or copy is permitted by contract only. Unauthorized use will be prosecuted.



A NEW DARK ROAST STORE
DUNKIN' DONUTS
for
SHULER DEVELOPMENT
STORE 357147
4880-4890 PORT ROYAL ROAD
SPRING HILL, TN 37174



INTERIOR ELEVATIONS
EDWARD L. COPELAND, AIA
4511 CHAMBLEE DUNWOODY ROAD, SUITE E.1
ATLANTA, GEORGIA 30338
PH. 770.551.9525 FAX. 770.551.9524
WWW.COPELANDARCHITECTURE.COM

DRAWN BY: RMG
CHECKED BY: ELC
DATE: 07/07/17
SCALE: AS NOTED
C.A. COMMISSION NUMBER 1704

SHEET NAME
INTERIOR ELEVATIONS

SHEET NUMBER

A6.3

RELEASED FOR CONSTRUCTION