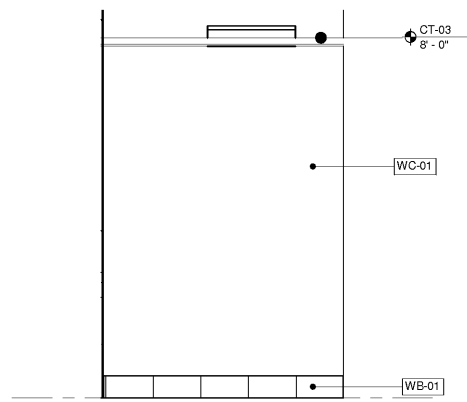
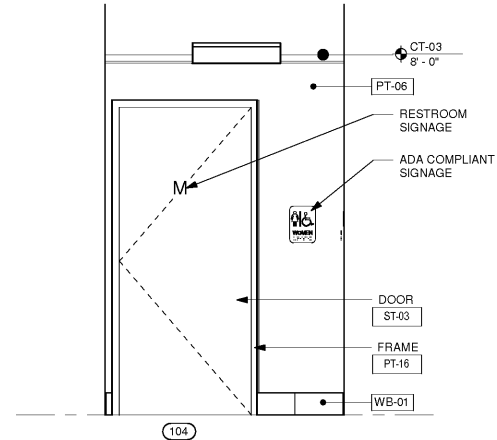


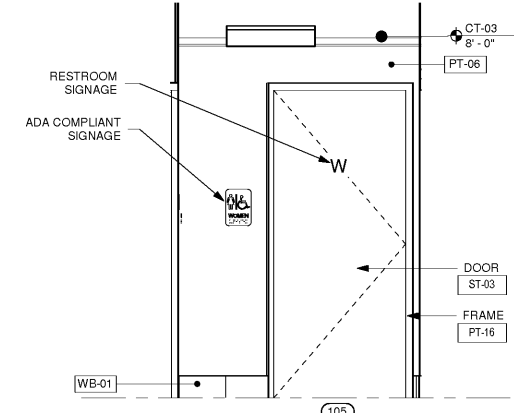
1 INTERIOR ELEVATION - VESTIBULE
A6.1 1/2" = 1'-0"



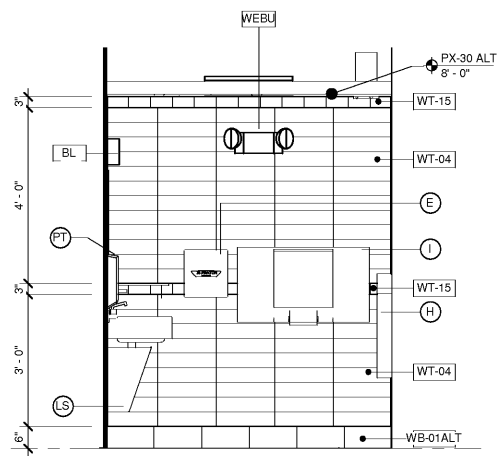
2 INTERIOR ELEVATION - VESTIBULE
A6.1 1/2" = 1'-0"



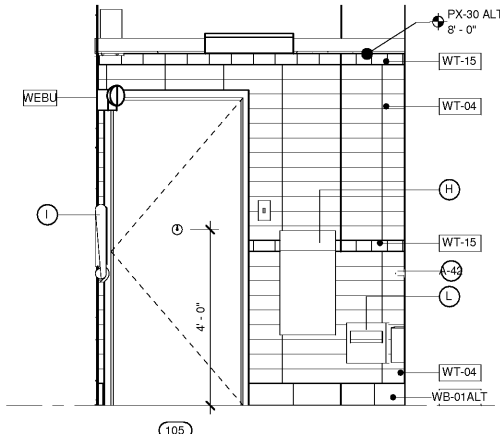
3 INTERIOR ELEVATION - VESTIBULE
A6.1 1/2" = 1'-0"



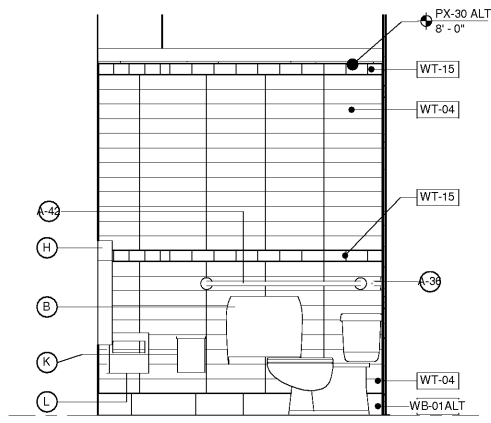
4 INTERIOR ELEVATION - VESTIBULE
A6.1 1/2" = 1'-0"



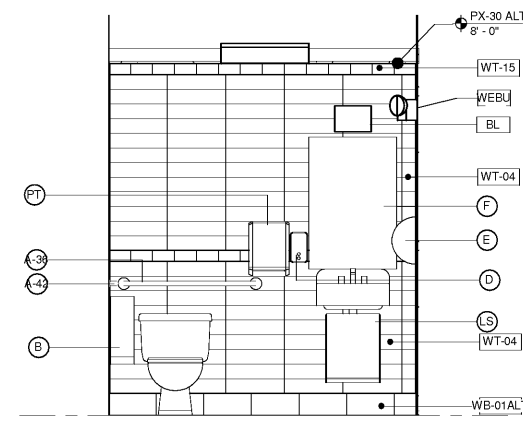
5 INTERIOR ELEVATION - WOMEN'S RESTROOM
A6.1 1/2" = 1'-0"



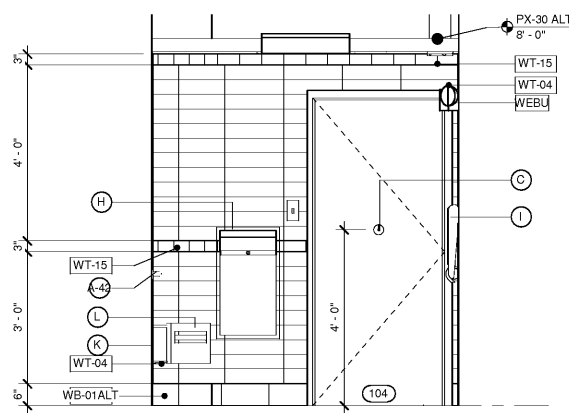
6 INTERIOR ELEVATION - WOMEN'S RESTROOM
A6.1 1/2" = 1'-0"



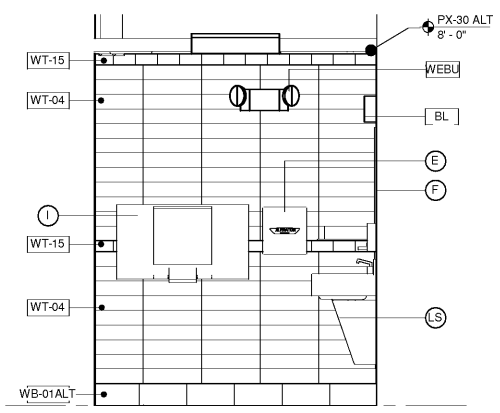
7 INTERIOR ELEVATION - WOMEN'S RESTROOM
A6.1 1/2" = 1'-0"



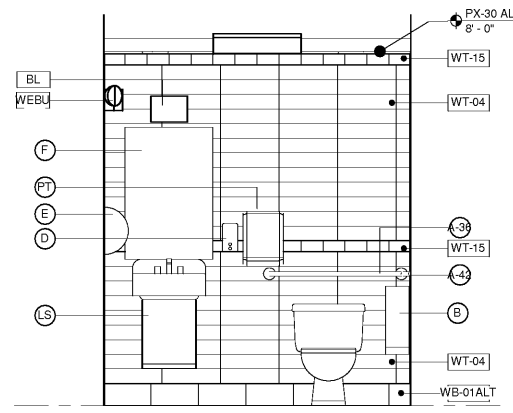
8 INTERIOR ELEVATION - WOMEN'S RESTROOM
A6.1 1/2" = 1'-0"



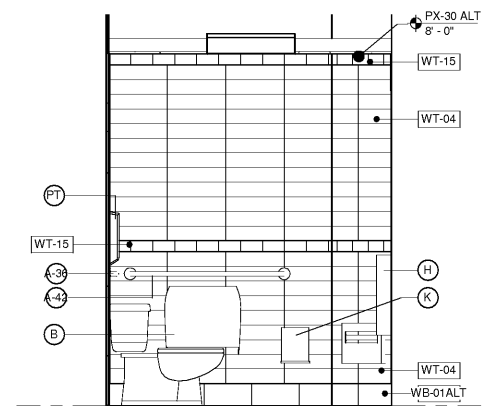
9 INTERIOR ELEVATION - MEN'S RESTROOM
A6.1 1/2" = 1'-0"



10 INTERIOR ELEVATION - MEN'S RESTROOM
A6.1 1/2" = 1'-0"



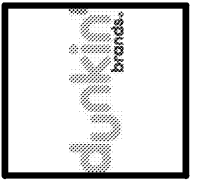
11 INTERIOR ELEVATION - MEN'S RESTROOM
A6.1 1/2" = 1'-0"



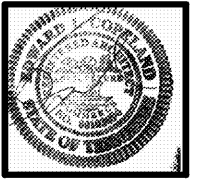
12 INTERIOR ELEVATION - MEN'S RESTROOM
A6.1 1/2" = 1'-0"

No.	Date	Description

This Drawing and all associated designs are the property of COPELAND ARCHITECTURE and shall be returned upon completion of work. Use or copy is permitted by contract only. Unauthorized use will be prosecuted.



A NEW DARK ROAST STORE
DUNKIN' DONUTS
for
SHULER DEVELOPMENT
STORE 357147
4880-4890 PORT ROYAL ROAD
SPRING HILL, TN 37174



INTERIOR ELEVATIONS
EDWARD L. COPELAND, AIA
4511 CHAMBLEE DUNWOODY ROAD, SUITE E.1
ATLANTA, GEORGIA 30338
PH. 770.551.9525 FAX 770.551.9524
WWW.COPELANDARCHITECTURE.COM

DRAWN BY:	RMG
CHECKED BY:	ELC
DATE:	07/07/17
SCALE:	AS NOTED
C.A. COMMISSION NUMBER	1704

SHEET NAME
INTERIOR ELEVATIONS

SHEET NUMBER

A6.1

RELEASED FOR CONSTRUCTION