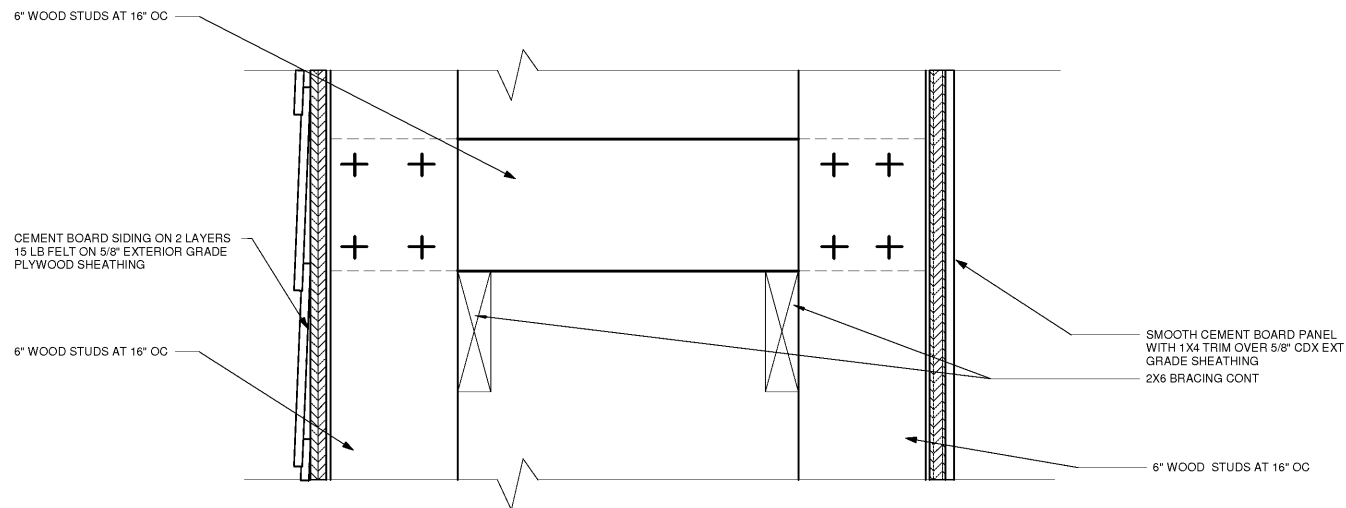
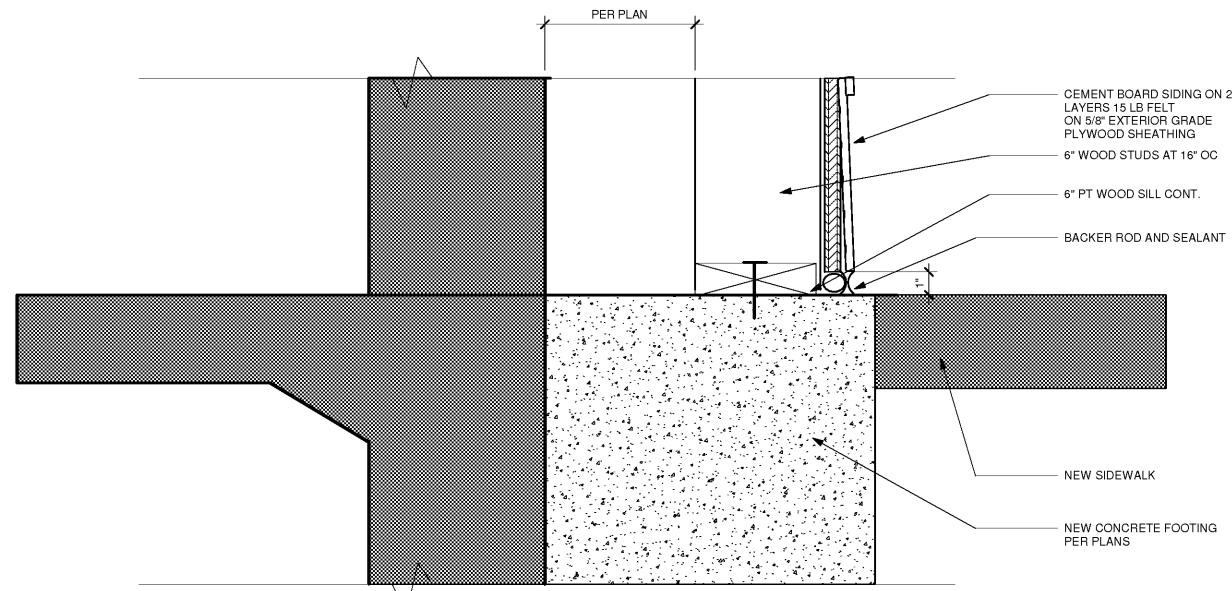


1 SECTION DETAIL
A4.3 3" = 1'-0"



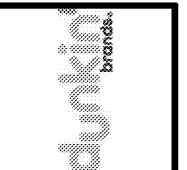
2 SECTION DETAIL
A4.3 3" = 1'-0"



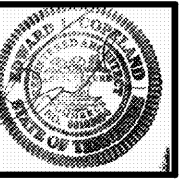
3 SECTION DETAIL
A4.3 3" = 1'-0"

No.	Date	Description

This Drawing and all associated designs are the property of COPELAND ARCHITECTURE and shall be returned upon completion of work. Use or copy is permitted by contract only. Unauthorized use will be prosecuted.



A NEW DARK ROAST STORE
for
DUNKIN' DONUTS
SHULER DEVELOPMENT
STORE 357147
4880-4890 PORT ROYAL ROAD
SPRING HILL, TN 37174



SECTION DETAILS
EDWARD L. COPELAND, AIA
4511 CHAMBLEE DUNWOODY ROAD, SUITE E.1
ATLANTA, GEORGIA 30338
PH. 770.551.9525 FAX 770.551.9524
WWW.COPELANDARCHITECTURE.COM

DRAWN BY:	RMG
CHECKED BY:	ELC
DATE:	07/07/17
SCALE:	AS NOTED
C.A. COMMISSION NUMBER:	1704
SHEET NAME:	SECTION DETAILS
SHEET NUMBER:	A4.3

RELEASED FOR CONSTRUCTION