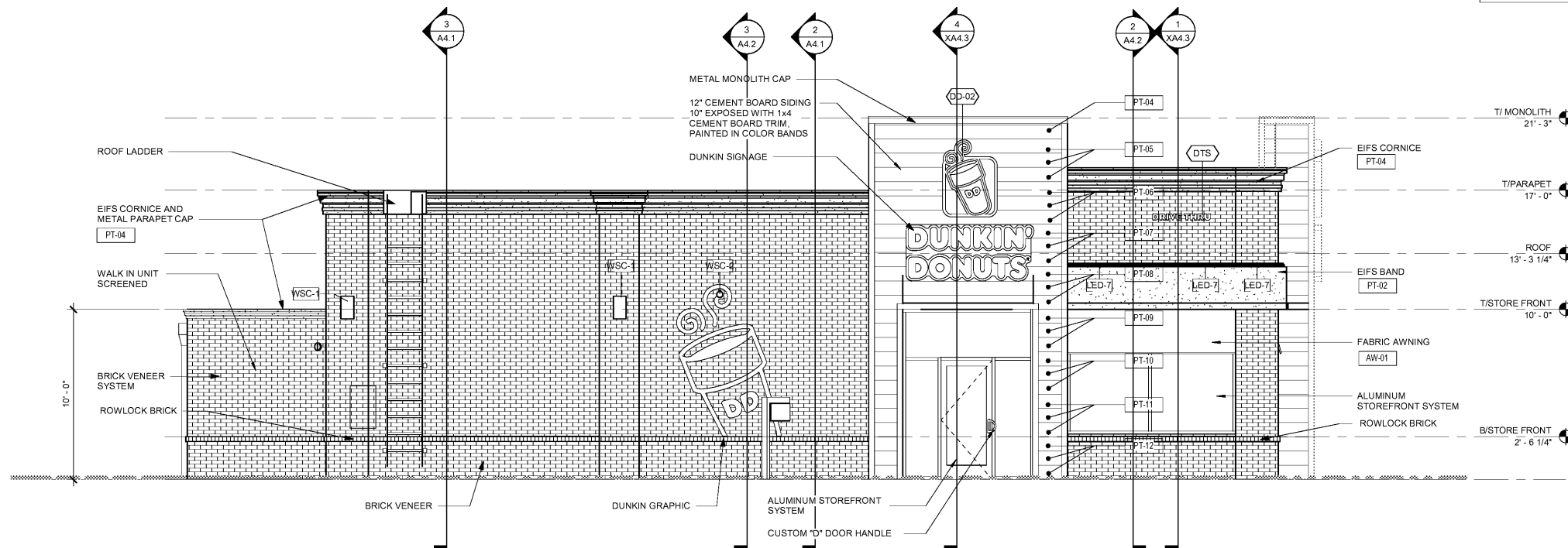


1 EXTERIOR ELEVATION - REAR NEW WORK
1/4" = 1'-0"

| EXTERIOR FINISH MATERIAL SCHEDULE | | | | | |
|-----------------------------------|--------------------|------------------|----------------------|--|---|
| CODE | MATERIAL | MANUFACTURER | PRODUCT NUMBER | DESCRIPTION | REMARKS |
| AW-01 | AWNING | ARLON | DD FRESH BREW AWNING | BROWN AWNING WITH FRESH BREW MESSAGE | STANDARD AWNING FOR FRESH BREW DESIGNS WITH ORANGE BAND |
| AW-01 ALT | AWNING | ARLON | DD FRESH BREW AWNING | BROWN AWNING - PLAIN MATERIAL | STANDARD PLAIN MATERIAL FOR FIELD ERADICATION OF CUP ICON AND COFFEE & MORE MESSAGE |
| AW-02 | AWNING | ARLON | DD FRESH BREW AWNING | ORANGE AWNING WITH FRESH BREW MESSAGING | ALTERNATE AWNING FOR FB DESIGNS WHERE ORANGE BAND IS NOT ALLOWED OR PRACTICAL TO OVERALL DESIGN |
| AW-02 ALT | AWNING | ARLON | DD FRESH BREW AWNING | ORANGE AWNING - PLAIN MATERIAL | STANDARD PLAIN MATERIAL FOR FIELD ERADICATION OF CUP ICON AND COFFEE & MORE MESSAGE |
| AW-03 | AWNING | ARLON | BR FLAVORS AWNING | PINK AWNING | STANDARD AWNING FOR BR FLAVOR DESIGNS W/BLEU BAND |
| BC-01 | BOLLARD COVER | IDEA SHIELD | BC1-CC-4-52-S | 4"W X 52"H ORANGE BOLLARD SLEEVE | |
| BR-01 | BRICK - CHADWICK | ACME | | MODULAR SIZE BRICK VENEER | DARK BUFF MORTAR |
| BR-02 | BRICK - BROOKSTONE | ACME | | MODULAR SIZE BRICK VENEER | DARK BUFF MORTAR |
| EIFS-02 | EIFS | DRYVIT SYSTEMS | DUDO-10-1020 | PAINT COLORS TO MATCH MONOLITH SCHEME | *ALTERNATE MATERIAL TO HARDPLANK BOARDS ON MONOLITH |
| EIFS-03 | EIFS | DRYVIT SYSTEMS | DUDO-10-1020 | MATCH SHERWIN WILLIAMS 7536 "BITTERSWEET STEM" | |
| EIFS-04 | EIFS | DRYVIT SYSTEMS | DUDO-10-1020 | MATCH SHERWIN WILLIAMS #6811 HONORABLE BLUE | BLUE BAND MATERIAL |
| EIFS-05 | EIFS | DRYVIT SYSTEMS | DUDO-10-1020 | MATCH SHERWIN WILLIAMS 7006 "EXTRA WHITE" | *ALTERNATE BUILDING MATERIAL TO HARDPLANK SIDING (BR SEGMENT OF COMBO ONLY). |
| PT-01 | PAINT | SHERWIN WILLIAMS | 6372 | "INVITING IVORY" | SATIN |
| PT-02 | PAINT | SHERWIN WILLIAMS | 6884 | "OBSTINATE ORANGE" | SATIN |
| PT-03 | PAINT | SHERWIN WILLIAMS | 6140 | "MODERATE WHITE" | SATIN |
| PT-04 | PAINT | SHERWIN WILLIAMS | 6099 | "SAND DOLLAR" | SATIN |
| PT-05 | PAINT | SHERWIN WILLIAMS | 7536 | "BITTERSWEET STEM" | SATIN |
| PT-06 | PAINT | SHERWIN WILLIAMS | 7724 | "CANOE" | SATIN |
| PT-07 | PAINT | SHERWIN WILLIAMS | 6117 | "SMOKEY TOPAZ" | SATIN |
| PT-08 | PAINT | SHERWIN WILLIAMS | 6096 | "JUTE BROWN" | SATIN |
| PT-09 | PAINT | SHERWIN WILLIAMS | 6097 | "STURDY BROWN" | SATIN |
| PT-10 | PAINT | SHERWIN WILLIAMS | 6090 | "JAVA" | SATIN |
| PT-11 | PAINT | SHERWIN WILLIAMS | 6069 | "FRENCH ROAST" | SATIN |
| PT-12 | PAINT | SHERWIN WILLIAMS | 6006 | "BLACK BEAN" | SATIN |
| PT-13 | PAINT | SHERWIN WILLIAMS | 7006 | "EXTRA WHITE" | SATIN |

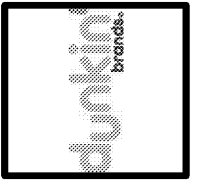
NOTE:
1. ALL SIGNAGE TO BE PERMITTED SEPARATELY
2. ALL AWNING AND CANOPIES ATTACHED TO THE EXTERIOR OF THE BUILDING SHALL HAVE A STRUCTURAL FRAME OF NON COMBUSTIBLE MATERIAL. AWNINGS ARE PROVIDED AND INSTALLED BY SIGN CONTRACTOR AND WILL BE DETAILED IN THE SIGNAGE PERMIT SUBMITTAL.



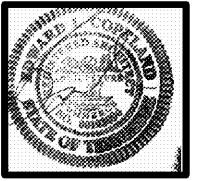
2 EXTERIOR ELEVATION - SIDE NEW WORK
1/4" = 1'-0"

| No. | Date | Description |
|-----|------|-------------|
| | | |
| | | |
| | | |

The Drawing and all associated designs are the property of COPELAND ARCHITECTURE and shall be returned upon completion of work. Use or copy is permitted by contract only. Unauthorized use will be prosecuted.



A NEW DARK ROAST STORE
DUNKIN' DONUTS
for
SHULER DEVELOPMENT
STORE 357147
4880-4890 PORT ROYAL ROAD
SPRING HILL, TN 37174



EXTERIOR ELEVATIONS - NEW WORK
EDWARD L. COPELAND, AIA
4511 CHAMBLEE DUNWOODY ROAD, SUITE E.1
ATLANTA, GEORGIA 30338
PH. 770.951.9525 FAX 770.551.9524
WWW.COPELANDARCHITECTURE.COM

DRAWN BY: RMG
CHECKED BY: ELC
DATE: 07/07/17
SCALE: AS NOTED
C.A. COMMISSION NUMBER 1704
SHEET NAME: EXTERIOR ELEVATIONS - NEW WORK
SHEET NUMBER

A3.2

RELEASED FOR CONSTRUCTION