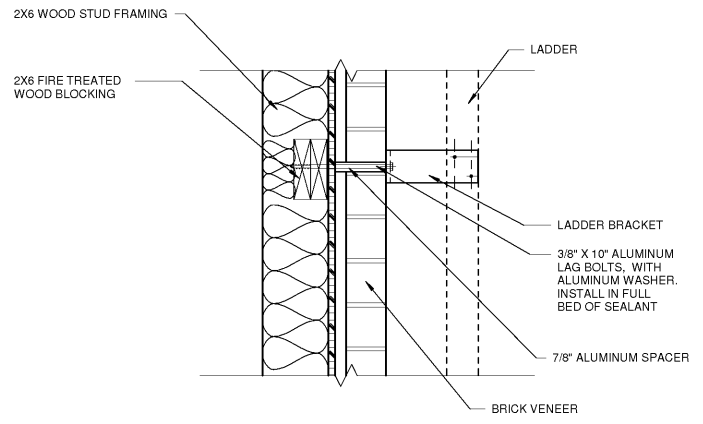
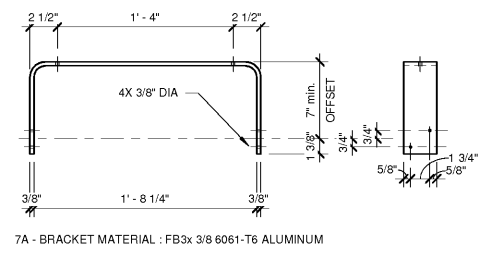


1 ROOF LADDER-ALACO 561
1/2" = 1'-0"



2 ROOF LADDER - 561 BRACKET CONNECTION
1 1/2" = 1'-0"



3 ROOF LADDER - 561 BRACKET
1 1/2" = 1'-0"

Manufacturer
ALACO Ladder Co.
5167 G Street, Chino, CA 91710-5143
Phone: (888) 310-7040 Fax: (909) 591-7565
E-mail: sales@alacoladder.com Web Site: www.alacoladder.com

Product Description
BASIC USE
Model 561 fixed wall ladders provide permanent exterior roof access. They are ideal for chimneys, towers, vats, antennas, tanks, water treatment plants, refineries and other industrial or marine applications. For ladders in excess of 20' (6.1m), cages and rest platforms are available. Security doors are offered.

CONSTRUCTION & MATERIALS
ALACO aluminum ladders and their components are fabricated from 6061-T6 aluminum alloy for added safety, strength and long-lasting durability, with no painting required.
Model 561 fixed wall ladders include side rails with 1-1/8" (29 mm) round rungs that are serrated and secured with cast aluminum connectors, 4 solid rivets and 3/8" (9.5 mm) thick brackets mounted to the walls.
Model 561 accessories include the following items:
Cages - These cages consist of 1/4" x 2" (6.4 x 51 mm) hoops and seven 3/16" x 1-1/2" (4.8 x 38 mm) vertical bars, with solid riveted connections.
Rest Platform - These platforms consist of GripStrut® floors, 4" (102 mm) high toe boards, 1-1/4" (32 mm) round serrated tube guard railings and cast aluminum railing fittings.
Security Doors - These doors are fabricated from 0.188" (4.8 mm) thick aluminum sheets, with securing piano hinges and hasps.
Note - Cages are required for wall ladders when installations are in excess of 20' (6.1 m) in height. Platforms are required for ladders over 30' (9.2 m).

TYPE
Fixed Wall Ladders- Model 561- Handrails over roof
SIZES
Height- Exceeding 20' (6.1 m) installed with cage; over 30' (9.2 m) installed with cages and rest platforms.
Width- 20-1/4" (514 mm)

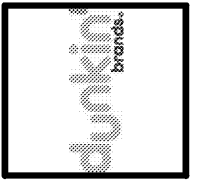
FINISHES & COATINGS
Mill finish is standard on aluminum ladders.
Factory applied paint coatings and chem-film treatment for field applied primers are available upon request.
Custom coatings and surface treatments are also offered.

Installation
PREPARATORY WORK
Handle and store product according to ALACO recommendations.

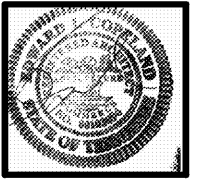
METHODS
Model 561 Fixed Aluminum Ladder Standard Assembly
Install top of the top rung, level with top of access/egress level or landing platform, served by the ladder stepping-off surface and space rungs 12" (305 mm) on centers to bottom rung. Note - Bottom rung height from ground will vary depending on roof height.
Install parapet railing 42" (1067 mm) above top rung, then extend horizontally and return to roof or the rear of the parapet.
Complete installation recommendations for all product models are available from the manufacturer.

No.	Date	Description

This Drawing and all associated designs are the property of COPELAND ARCHITECTURE and shall be returned upon completion of work. Use or copy is permitted by contract only. Unauthorized use will be prosecuted.



A NEW DARK ROAST STORE
DUNKIN' DONUTS
for
SHULER DEVELOPMENT
STORE 357147
4880-4890 PORT ROYAL ROAD
SPRING HILL, TN 37174



ROOF DETAILS
EDWARD L. COPELAND, AIA
4511 CHAMBLEE DUNWOODY ROAD, SUITE E.1
ATLANTA, GEORGIA 30338
PH. 770.551.9525 FAX 770.551.9524
WWW.COPELANDARCHITECTURE.COM

DRAWN BY:
Designer
CHECKED BY:
Checker
DATE:
07/07/17
SCALE:
AS NOTED
C.A. COMMISSION NUMBER
1704

SHEET NAME
ROOF DETAILS

SHEET NUMBER
A2.3