

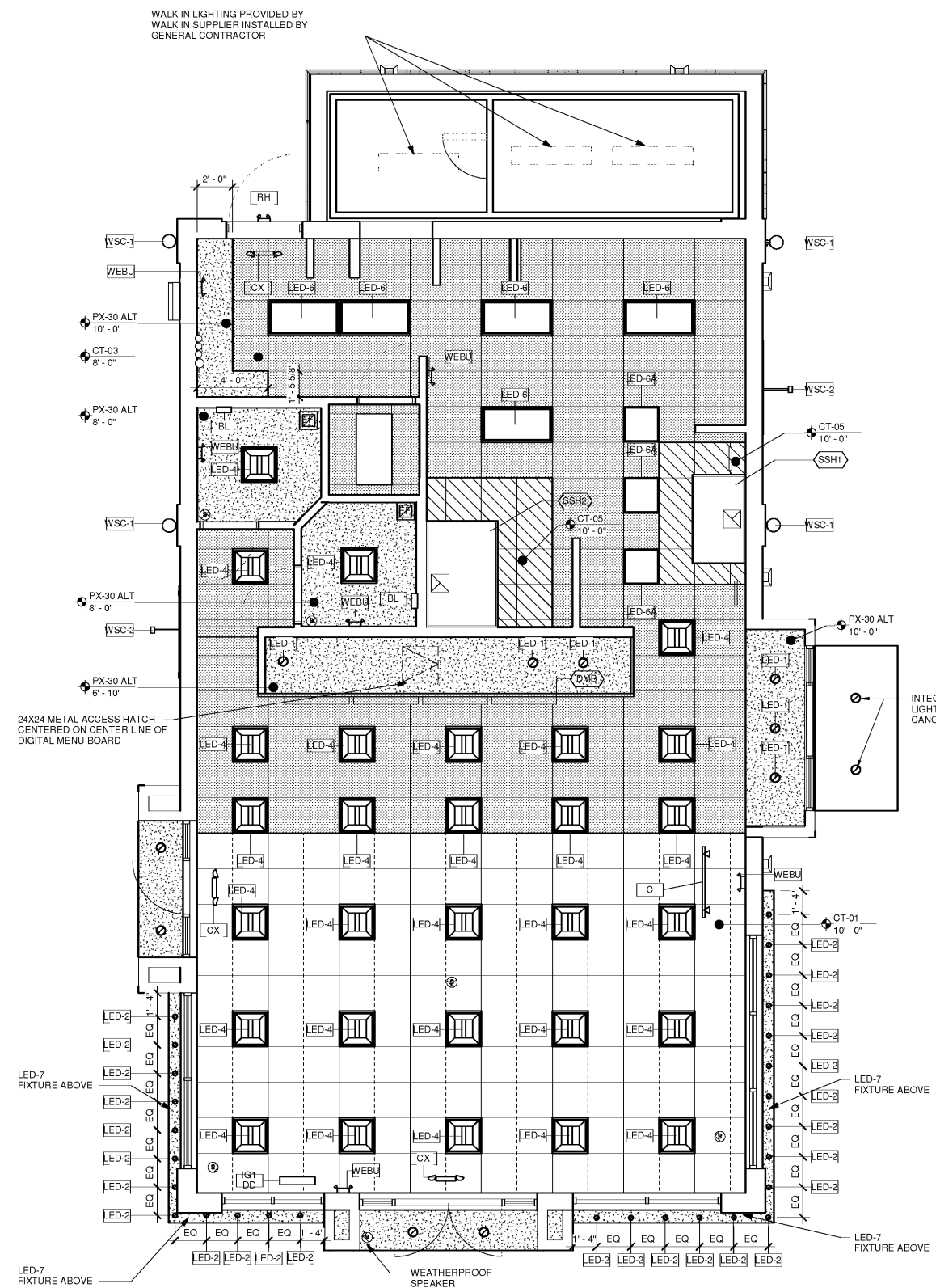
LIGHTING FIXTURE SCHEDULE			
Type Mark	DESCRIPTION	MANUFACTURER	MODEL
BL	BATHROOM WALL SCONCE	MINKA	ML-505-84-PL
C	TRACK HEAD - OPEN STYLE	HALO	L703MB W/1-W LED LAMP
CX	COMBO LED EXIT/(2) HEAD EBU	EXITRONIX	VEX-U-BP-WH-EL90-R
IG1 DD			IG1- DD
LED-1	LED DOWN LIGHT W/RC-6 HOUSING	CREE	VL6-1027120-SP1/VL6A-SP1
LED-2	EXTERIOR 3" FIXTURE	CONSTRAST LIGHTING	CA2550/REFRE2550/CA2550-01
LED-4	LED 2X2 RECESSED FIXTURE	CREE	VL22-3235-SP-1
LED-6	LED 2X4 RECESSED FIXTURE (BACKROOM ONLY)	METALUX	2GR-LD1-48-UNIV-L835-CD1-U
LED-6A	2X2 BOH LED	METALUX	22GR-LD4-48-F1-UNIV-L835CD1-U
LED-7	LED EXTERIOR STRIP LIGHT	SLOAN	701912 C175 (48" LONG)
RH	2 HEAD EMERGENCY LIGHT	EX	ZIP-2
WEBU	2 HEAD EMERGENCY LIGHT	EXITRONIX	LL50H
WSC-1	EXTERIOR BLACK UP/DN SCONCE W/ LENS	SLP	8340-10/9008-12
WSC-2	SIGNLITE FIXTURE W/18" ARM W/LAMP	COOPER	H-HDMR16/18-1-119/50W/LV-BCM-M/B011 2830

- LIGHTING SCHEDULE NOTES**
1. PROVIDE ALL FIXTURES COMPLETE WITH LAMPS. REFER TO NATIONAL ACCOUNT SOURCE INFO FOR LAMP SPECS & VILLA LIGHTING RE-LAMPING PROGRAM.
 2. ALL INCANDESCENT LAMPS SHALL BE RATED 130 VOLTS.
 3. ALL BALLASTS SHALL BE HIGH POWER FACTOR. FLUORESCENT BALLASTS FOR T8 LAMPS TO BE ADVANCED MANUFACTURED OPTIMUM WATT MIZER, EXCEPT OUTDOOR FIXTURES TO BE ZERO-DEGREE MAGNETIC BALLASTS.
 4. PROVIDE HOLD DOWN CLIPS FOR EACH CORNER OF FLUORESCENT GRID TROFFERS.
 5. PROVIDE ALL REQUIRED MOUNTING OR HANGING HARDWARE.
 6. COORDINATE AND VERIFY ALL FIXTURE INFORMATION, TYPES AND FINAL LOCATIONS WITH THE REFLECTED CEILING PLAN.
 7. LAMPS SHALL BE AS MANUFACTURED BY SYLVANIA, WESTINGHOUSE, GENERAL ELECTRIC, OR APPROVED EQUAL.
 8. A DESIGNATION OF (E) INDICATES AN EXISTING LIGHT FIXTURE
 9. SHADED AREA INDICATES VINYL CLAD CEILING TILES
 10. PROVIDE TRIM KITS AS REQUIRED

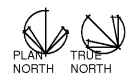
CEILING SCHEDULE				
Type Mark	DESCRIPTION	MANUFACTURER	PRODUCT	REMARKS
CT-01	2'x4' FINE FISSURED SECOND LOOK II "WHITE"	ARMSTRONG	1761 WH	
CT-03	KITCHEN CEILING TILE	ARMSTRONG	VL 870	
CT-05	METAL CEILING PANELS	ARMSTRONG	944U6A1	
PX-30 ALT	PAINTED GYPSUM WALL BOARD	SHERWIN WILLIAMS	SW 7006 EXTRA WHITE	SCRUBBABLE EPOXY

HEAT EXHAUST HOOD SCHEDULE							
ITEM NO	DESCRIPTION	MODEL NUMBER	UNIT WIDTH	UNIT DEPTH	PROVIDED BY	INSTALLED BY	Comments
SSH1	STAINLESS STEEL HOOD AT SANDWICH STATION	TBD	5' - 0"	3' - 0"	GENERAL CONTRACTOR	GENERAL CONTRACTOR	TYPE II HEAT EXHAUST HOOD
SSH2	STAINLESS STEEL HOOD AT OVEN HOOD	TBD	6' - 0"	4' - 0"	GENERAL CONTRACTOR	GENERAL CONTRACTOR	TYPE II HEAT EXHAUST HOOD

- MUSIC SYSTEM NOTES**
1. MUSIC SYSTEM IS REQUIRED IN ALL NEW AND REMODEL STORES. MUSIC SYSTEM TO USE DBI APPROVED PROGRAMMING
 2. ALL CEILING SPEAKERS TO BE FLUSH MOUNTED WHITE. ALL EXTERIOR SPEAKERS TO BE BLACK WITH EXTERIOR GRADE CONSTRUCTION
 3. ONE SPEAKER IN EACH BATHROOM. TO BE FLUSH MOUNTED WHITE
 4. A MINIMUM OF TWO SPEAKERS IN THE SEATING AREA (NO SPEAKERS IN THE SERVICE AREA).
 5. A MINIMUM OF TWO SPEAKERS AT EXTERIOR SEATING AREAS WHERE APPLICABLE.
 6. SPEAKER AT EXTERIOR OF BUILDING ADJACENT TO ENTRY.
 7. PROVIDE AND INSTALL SEPARATE VOLUME CONTROLS FOR EACH AREA (RESTROOMS, SEATING AREA, EXTERIOR)
 8. HARDWARE TO BE INSTALLED IN THE OFFICE. FIELD VERIFY AND COORDINATE WITH FRANCHISE FOR THE EXACT LOCATION OF THE UNIT AND VOLUME CONTROLS.



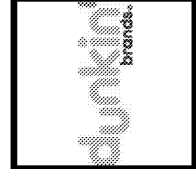
1 REFLECTED CEILING PLAN - NEW WORK
A1.3 1/4" = 1'-0"



RELEASED FOR CONSTRUCTION

No.	Date	Description

This Drawing and all associated designs are the property of COPELAND ARCHITECTURE and shall be returned upon completion of work. Use or copy is permitted by contract only. Unauthorized use will be prosecuted.



A NEW DARK ROAST STORE
DUNKIN' DONUTS
for
SHULER DEVELOPMENT
STORE 357147
4880-4890 PORT ROYAL ROAD
SPRING HILL, TN 37174



REFLECTED CEILING PLAN - NEW WORK
EDWARD L. COPELAND, AIA
4511 CHAMBLEE DUNWOODY ROAD, SUITE E-1
ATLANTA, GEORGIA 30338
PH. 770.951.9525 FAX 770.551.9524
WWW.COPELANDARCHITECTURE.COM

DRAWN BY: RMG
CHECKED BY: ELC
DATE: 07/07/17
SCALE: AS NOTED
C.A. COMMISSION NUMBER 1704
SHEET NAME REFLECTED CEILING PLAN - NEW WORK
SHEET NUMBER

A1.3