

1 FIRST FLOOR - NEW WORK-DIMENSION
1/4" = 1'-0"

ADA NOTES

THE GENERAL CONTRACTOR SHALL ACQUAINT HIMSELF WITH THE BARRIER FREE REQUIREMENTS FOR THE STATE AND THE AMERICAN DISABILITIES ACT (ADA) AND SHALL INSURE THAT THIS FACILITY WILL BE ACCESSIBLE ACCORDING TO THE STRICTER REQUIREMENTS OF THE APPLICABLE STANDARDS. THE FOLLOWING IS A PARTIAL LIST OF REQUIREMENTS.

1. DOOR HARDWARE SHALL BE MOUNTED BETWEEN 36" AND 42" ABOVE FLOOR AND BE LEVER TYPE.
2. TOILETS
 - A. LAVATORY TO HAVE LEVER HANDLES, SPRING FAUCETS OR SELF METERING FAUCETS.
 - B. A COAT HOOK 48" ABOVE THE FLOOR SHALL BE MOUNTED ON THE BACK SIDE OF THE BARRIER FREE STALL DOOR.
 - C. LOCATE THE WATER CLOSET 18" FROM THE CENTER LINE OF THE FIXTURE TO THE WALL. THE SEAT WILL BE 17" TO 19" ABOVE THE FLOOR TO THE TOP OF SEAT. FLUSH HANDLE TO BE ON EXPOSED SIDE OF WATER CLOSET.
 - D. PROVIDE ONE 42" AND ONE 36" LONG x 1 1/2" OUTSIDE DIAMETER PEENED GRAB BARS, 1 1/2" FROM THE WALL WITH ONE BEHIND AT 8" FROM THE WALL AND ONE ADJACENT TO AT 12" FROM THE WALL 33"-36" PARALLEL TO AND ABOVE THE FLOOR.
 - E. LAVATORY TO BE MOUNTED 34" MAX. ABOVE THE FINISHED FLOOR TO RIM WITH KNEE SPACE OF 30" IN WIDTH AND 27" IN CLEAR HEIGHT, (28" CLEAR UNDER FRONT EDGE).
 - F. INSTALL MIRROR 40" MAX. ABOVE THE FINISHED FLOOR (TO BOTTOM) AND 72" TO TOP.
 - G. DISPENSERS TO BE MOUNTED A MAXIMUM OF 42" ABOVE THE FLOOR TO ALL OPERATING OR DISPENSING SLOTS.
 - H. TOILET PAPER DISPENSERS MOUNTED 19" MIN. TO CENTER LINE ABOVE THE FLOOR.

ADA STATEMENT

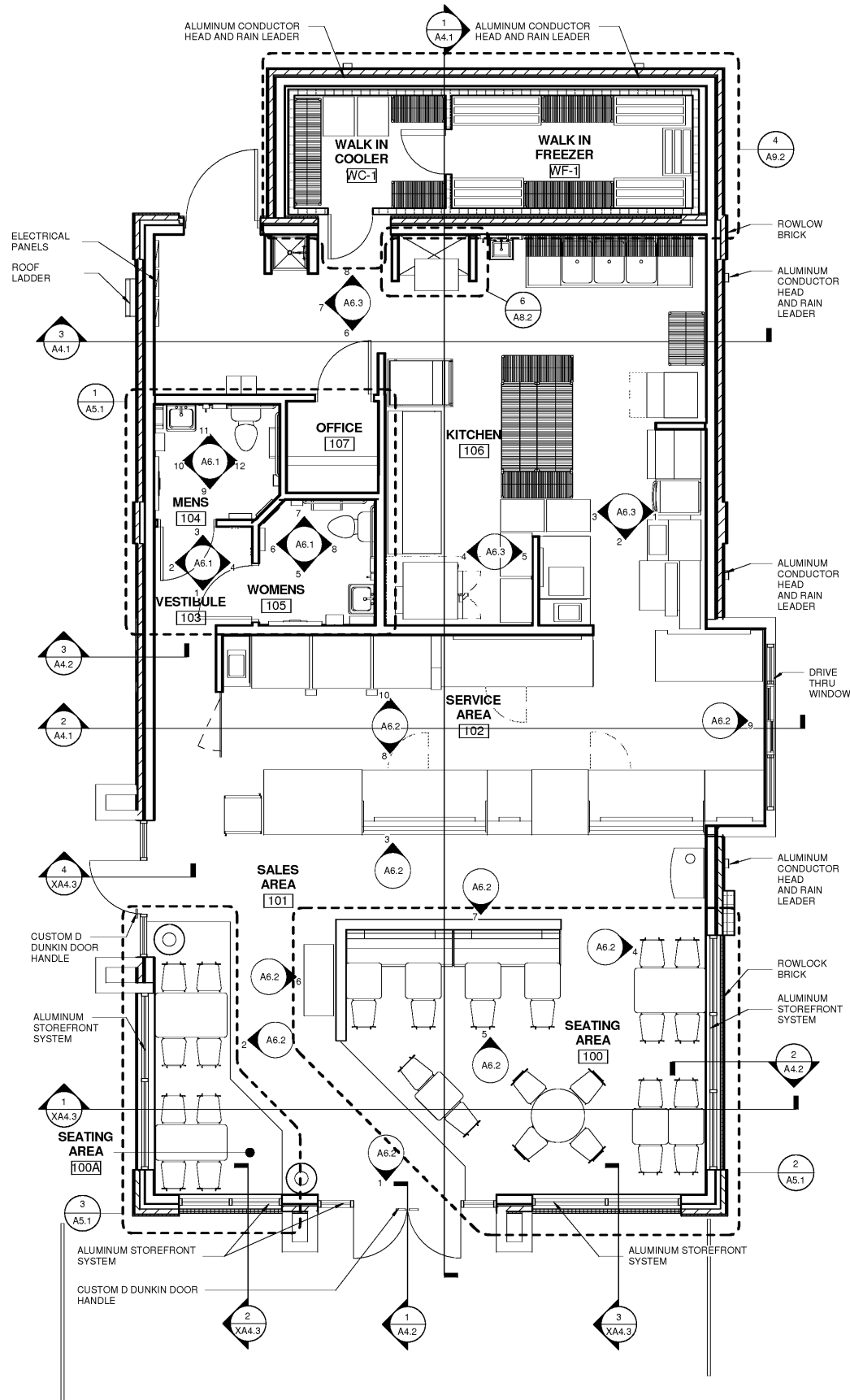
I HEREBY CERTIFY TO THE BEST OF MY UNDERSTANDING THAT THE PLANS AND DRAWINGS FOR THIS PROJECT WERE DRAWN IN ACCORDANCE WITH ALL THE FEDERAL, STATE AND LOCAL LAWS, INCLUDING, BUT NOT LIMITED TO, THE AMERICANS WITH DISABILITIES ACT (THE "ADA"), THE ADA ACCESSIBILITY GUIDELINES AND ANY STATE OR LOCAL ACCESSIBILITY CODES, REGULATIONS OR STANDARDS

EDWARD L. COPELAND AIA, NCARB

ARCHITECT'S SIGNATURE

FLOOR PLAN NOTES

1. DIMENSIONS ARE FROM FACE OF STUD/MASONRY UNLESS NOTED OTHERWISE. DIMENSIONS NOTED AS "CLEAR" ARE FROM FACE OF PARTITION TO FACE OF PARTITION UNLESS OTHERWISE NOTED.
2. DIMENSIONS NOTED AS "CLEAR" SHALL BE DEEMED CRITICAL. ADJACENT DIMENSIONS SHALL BE ADJUSTED AS REQUIRED.
3. PROVIDE 1'-6" MINIMUM ON THE "PULL" SIDE CLEARANCE FOR HANDICAPPED ACCESS FROM EDGE OF ALL DOORS TO THE ADJACENT FIXTURE (S) OR FINISHED WALL SURFACE & 1'-0" MINIMUM CLEARANCE ON THE PUSH SIDE.
4. ALL DOOR JAMBS SHALL BE 6" FROM THE FINISHED SURFACE OF THE CORNER OF THE ROOM U.N.O.
5. "ALIGN" WHERE NOTED, SHALL MATCH FINISH SURFACE OF PARTITION / CONSTRUCTION WITH ADJACENT CONSTRUCTION AND/OR ARCHITECTURAL ELEMENT.
6. PROVIDE UTILITY AND CLEANING ACCESS AT ALL FRONT LINE CASEWORK W/ DRAINS (TYP.)
7. INSTALL FIRE EXTINGUISHERS PER CODE.
8. INSTALL BRUSHED ALUMINUM CORNER GUARDS AT ALL OUTSIDE CORNERS OF SUITE, FROM THE TOP OF THE BASE TILE TO TOP OF OPENING OR CEILING, WHICHEVER IS APPLICABLE. 2" X 2" BRUSHED ALUMINUM CORNER GUARDS, (TYPICAL THROUGHOUT KITCHEN) AND 1/2" BRUSHED ALUMINUM CORNER GUARD (THROUGHOUT SALES AREA)
9. ALL INTERIOR WALLS AND PARTITIONS SHALL BE OF NONCOMBUSTIBLE OR LIMITED-COMBUSTIBLE MATERIALS PER NFPA 101 CHAPTER 10.
10. G.C. TO COORDINATE PERMIT, APPROVALS, AND LOCATION OF DUMPSTER AND STORAGE UNIT PRIOR TO STORE CLOSING
11. GENERAL CONTRACTOR TO DISCONNECT ALL EXISTING EQUIPMENT. WALK IN UNIT TO REMAIN IN OPERATION AS DIRECTED BY FRANCHISEE.
12. G.C. TO OBTAIN ALL CONSTRUCTION MATERIALS IN ADVANCE AND STORE WITHIN ON-SITE STORAGE UNIT. MATERIALS WITHIN STORAGE UNIT ARE TO BE PACKED AND STAGED ACCORDING TO SEQUENCE OF PROJECT TO FACILITATE LOADING JOB.
13. BACK OF HOUSE TO BE THOROUGHLY CLEANED INCLUDING ALL WALLS, FLOORS, RACKS, ETC.
14. EQUIPMENT SUPPLIER TO PLACE ALL NEW EQUIPMENT.
15. ALL ELEVATIONS REFER TO AN ASSUMED ELEVATION OF 0'-0" THAT EQUALS EXISTING FINISH FLOOR LEVEL.
16. GENERAL CONTRACTOR TO MAKE ALL MECHANICAL, PLUMBING AND ELECTRICAL CONNECTIONS FOR ALL EQUIPMENT AS INDICATED ON EQUIPMENT PLAN.
17. REFER TO PLUMBING PLANS FOR FLOOR DRAIN, DRAIN AND CLEAN OUTS. COORDINATE TILE INSTALLATION AROUND THESE ITEMS WITH PLUMBING CONTRACTOR TO ACHIEVE CLEANEST POSSIBLE INSTALLATION.
18. PROVIDE POSITIVE SLOPE TO FLOOR DRAINS WHERE POSSIBLE, FIELD COORDINATE WITH EXISTING CONDITIONS. COORDINATE SLOPES WITH TILE CONTRACTOR TO ACHIEVE CLEAN SMOOTH TRANSITIONS.
19. ALL ELEVATIONS REFER TO AN ASSUMED ELEVATION OF 0'-0" THAT EQUALS EXISTING FINISH FLOOR LEVEL.
20. GENERAL CONTRACTOR TO PROVIDE ANCHOR BOLTS FOR SLAB MOUNTED SAFE IN OFFICE (UNLESS NOTED OTHERWISE) REFER TO SPECIFICATIONS TO BE PROVIDED BY FRANCHISEE.
21. GENERAL CONTRACTOR TO INSTALL MYLAR ROLL DOWN SHADES AT GLAZING. SHADES ARE OPTIONAL PER FRANCHISEE
22. THE GENERAL CONTRACTOR IS RESPONSIBLE FOR PROVIDING AND INSTALLING THE HEAT EXHAUST HOODS.

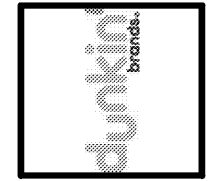


2 FIRST FLOOR - NEW WORK
1/4" = 1'-0"



No.	Date	Description

This Drawing and all associated designs are the property of COPELAND ARCHITECTURE and shall be returned upon completion of work. Use or copy is permitted by contract only. Unauthorized use will be prosecuted.



A NEW DARK ROAST STORE
DUNKIN' DONUTS
for
SHULER DEVELOPMENT
STORE 357147
4880-4890 PORT ROYAL ROAD
SPRING HILL, TN 37174



FLOOR PLAN AND DIMENSION PLAN
EDWARD L. COPELAND, AIA
4511 CHAMBLEE DUNWOODY ROAD, SUITE E1
ATLANTA, GEORGIA 30338
PH. 770.951.9525 FAX 770.551.9524
WWW.COPELANDARCHITECTURE.COM

DRAWN BY: FMG
CHECKED BY: ELC
DATE: 07/07/17
SCALE: AS NOTED
C.A. COMMISSION NUMBER 1704
SHEET NAME FLOOR PLAN AND DIMENSION PLAN
SHEET NUMBER A1.1

RELEASED FOR CONSTRUCTION