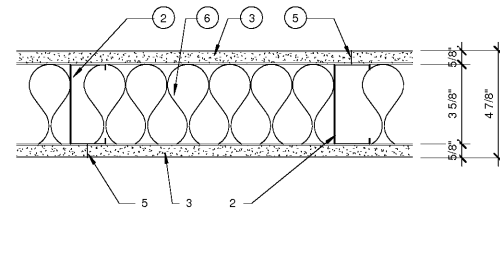


- FLOOR AND TOP RUNNERS - (NOT SHOWN) - 6" CHANNEL SHAPED, FABRICATED FROM 20 GA. CORROSION-PROTECTED STEEL, WITH MIN. 1" LONG LEGS, ATTACHED TO FLOOR WITH FASTENERS 24" O.C. MAX. BRACE TOP RUNNERS AT 8'-0" O.C. MAX. SEAL THE PARTITION PERIMETER WITH A 1/4" MIN. BEAD OF ACOUSTICAL SEALANT. SEAL AROUND ALL CUTOUPS.
- STEEL STUDS - 6" CHANNEL SHAPED, FABRICATED FROM 20 GA. CORROSION-PROTECTED STEEL, MIN. 1 1/4" FLANGES AND 1/4" RETURN, SPACED 16" O.C.
- SUBSTRATE PER SCHEDULE
  - GYPSON WALLBOARD - 5/8" DUROCK CEMENT BOARD WITH BEVELED, SQUARE OR TAPERED EDGES, APPLIED VERTICALLY OR HORIZONTALLY. VERTICAL JOINTS CENTERED OVER STUDS AND STAGGERED ONE STUD CAVITY ON OPPOSITE SIDES OF STUDS. HORIZONTAL EDGE JOINTS AND HORIZONTAL BUTT JOINTS ON OPPOSITE SIDES OF STUDS STAGGERED A MIN. OF 12". STOP GYP. BD. 2" ABOVE
  - GYPSON WALLBOARD - 5/8" GYPSON PANELS WITH BEVELED, SQUARE OR TAPERED EDGES, APPLIED VERTICALLY OR HORIZONTALLY. VERTICAL JOINTS CENTERED OVER STUDS AND STAGGERED ONE STUD CAVITY ON OPPOSITE SIDES OF STUDS. HORIZONTAL EDGE JOINTS AND HORIZONTAL BUTT JOINTS ON OPPOSITE SIDES OF STUDS STAGGERED A MIN. OF 12". STOP GYP. BD. 2" ABOVE
  - EXTERIOR GRADE PLYWOOD - 5/8" SHEETS
- FASTENERS - (NOT SHOWN) - TYPE S OR S-12 SELF-DRILLING, SELF-TAPPING STEEL SCREWS USED TO ATTACH PANELS TO STUDS (ITEM 2), 1" LONG, SPACED 8" O.C. WHEN PANELS ARE APPLIED HORIZONTALLY, OR 12" O.C. WHEN PANELS ARE APPLIED VERTICALLY.
- JOINT TAPE AND COMPOUND - VINYL OR CASEIN, DRY OR PREMIXED JOINT COMPOUND APPLIED IN THREE COATS TO JOINTS AND SCREW HEADS OF OUTER LAYERS. PAPER TAPE, NOM 2" WIDE, EMBEDDED IN FIRST LAYER OF COMPOUND OVER ALL JOINTS OF OUTER PANELS
- BATTS AND BLANKETS - FIBERGLASS BATTS, FRICTION FITTED BETWEEN STUDS AND RUNNERS. MIN. 3 1/2" NOMINAL THICKNESS AT RESTROOMS AND OFFICE ONLY

1 WALL TYPE A  
A0.5 3' = 1'-0"

WALL TYPE A SCHEDULE		
TYPE MARK	DESCRIPTION (SIDE ONE / SIDE TWO)	COMMENTS
A3	REINFORCED FIBERGLASS PANELS OVER 5/8" EXTERIOR GRADE SHEATING SUBSTRATE/ TILE OVER 5/8" CEMENT BOARD SUBSTRATE	
A5	REINFORCED FIBERGLASS PANELS OVER 5/8" EXTERIOR GRADE PLYWOOD SUBSTRATE / REINFORCED FIBERGLASS PANELS OVER 5/8" EXTERIOR GRADE PLYWOOD SUBSTRATE	
A13	PAINT-WALL COVERING OVER 5/8" GYPSON WALL BOARD / TILE OVER 5/8" CEMENT BOARD - INSTALL SOUND INSULATION	
A14	PAINT-WALL COVERING OVER 5/8" GYPSON WALL BOARD / TILE OVER 5/8" CEMENT BOARD - INSTALL SOUND INSULATION	
A15	PAINT-WALL COVERING OVER 5/8" GYPSON WALL BOARD / TILE OVER 5/8" CEMENT BOARD - INSTALL SOUND INSULATION	
A16	PAINT-WALL COVERING OVER 5/8" GYPSON WALL BOARD / TILE OVER 5/8" CEMENT BOARD - INSTALL SOUND INSULATION	
A17	REINFORCED FIBERGLASS PANELS OVER 5/8" EXTERIOR GRADE SHEATING SUBSTRATE/ TILE OVER 5/8" CEMENT BOARD SUBSTRATE	



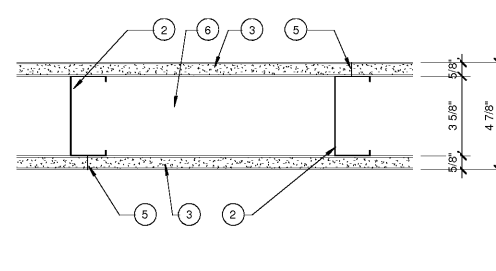
- FLOOR AND TOP RUNNERS - (NOT SHOWN) - 3 5/8" CHANNEL SHAPED, FABRICATED FROM 20 GA. CORROSION-PROTECTED STEEL, WITH MIN. 1" LONG LEGS, ATTACHED TO FLOOR WITH FASTENERS 24" O.C. MAX. BRACE TOP RUNNERS AT 8'-0" O.C. MAX. SEAL THE PARTITION PERIMETER WITH A 1/4" MIN. BEAD OF ACOUSTICAL SEALANT. SEAL AROUND ALL CUTOUPS.
- STEEL STUDS - 3 5/8" CHANNEL SHAPED, FABRICATED FROM 20 GA. CORROSION-PROTECTED STEEL, MIN. 1 1/4" FLANGES AND 1/4" RETURN, SPACED 16" O.C.
- SUBSTRATE PER SCHEDULE
  - GYPSON WALLBOARD - 5/8" DUROCK CEMENT BOARD WITH BEVELED, SQUARE OR TAPERED EDGES, APPLIED VERTICALLY OR HORIZONTALLY. VERTICAL JOINTS CENTERED OVER STUDS AND STAGGERED ONE STUD CAVITY ON OPPOSITE SIDES OF STUDS. HORIZONTAL EDGE JOINTS AND HORIZONTAL BUTT JOINTS ON OPPOSITE SIDES OF STUDS STAGGERED A MIN. OF 12". STOP GYP. BD. 2" ABOVE
  - GYPSON WALLBOARD - 5/8" GYPSON PANELS WITH BEVELED, SQUARE OR TAPERED EDGES, APPLIED VERTICALLY OR HORIZONTALLY. VERTICAL JOINTS CENTERED OVER STUDS AND STAGGERED ONE STUD CAVITY ON OPPOSITE SIDES OF STUDS. HORIZONTAL EDGE JOINTS AND HORIZONTAL BUTT JOINTS ON OPPOSITE SIDES OF STUDS STAGGERED A MIN. OF 12". STOP GYP. BD. 2" ABOVE
  - EXTERIOR GRADE PLYWOOD - 5/8" SHEETS
- FASTENERS - (NOT SHOWN) - TYPE S OR S-12 SELF-DRILLING, SELF-TAPPING STEEL SCREWS USED TO ATTACH PANELS TO STUDS (ITEM 2), 1" LONG, SPACED 8" O.C. WHEN PANELS ARE APPLIED HORIZONTALLY, OR 12" O.C. WHEN PANELS ARE APPLIED VERTICALLY.
- JOINT TAPE AND COMPOUND - VINYL OR CASEIN, DRY OR PREMIXED JOINT COMPOUND APPLIED IN THREE COATS TO JOINTS AND SCREW HEADS OF OUTER LAYERS. PAPER TAPE, NOM 2" WIDE, EMBEDDED IN FIRST LAYER OF COMPOUND OVER ALL JOINTS OF OUTER PANELS
- BATTS AND BLANKETS - FIBERGLASS BATTS, FRICTION FITTED BETWEEN STUDS AND RUNNERS. MIN. 3 1/2" NOMINAL THICKNESS AT RESTROOMS AND OFFICE ONLY

2 WALL TYPE B  
A0.5 3' = 1'-0"

WALL TYPE B SCHEDULE		
TYPE MARK	DESCRIPTION (SIDE ONE / SIDE TWO)	COMMENTS
B2	PAINT-WALL COVERING OVER 5/8" GYPSON WALL BOARD / TILE OVER 5/8" CEMENT BOARD - INSTALL SOUND INSULATION	
B3	FRP OVER 5/8" EXTERIOR GRADE PLYWOOD SUBSTRATE / TILE OVER 5/8" CEMENT BOARD SUBSTRATE	
B4	FULL HEIGHT RESTROOM TILE OVER 5/8" CEMENT BOARD / FULL HEIGHT RESTROOM TILE OVER 5/8" CEMENT BOARD	
B5	REINFORCED FIBERGLASS PANELS OVER 5/8" EXTERIOR GRADE SHEATING SUBSTRATE / REINFORCED FIBERGLASS PANELS OVER 5/8" EXTERIOR GRADE SHEATING SUBSTRATE	
B7	REINFORCED FIBERGLASS PANELS OVER 5/8" EXTERIOR GRADE PLYWOOD SUBSTRATE / WHITE WALL TILE OVER 5/8" CEMENT BOARD SUBSTRATE	
B13	PAINT-WALL COVERING OVER 5/8" GYPSON WALL BOARD / TILE OVER 5/8" CEMENT BOARD - INSTALL SOUND INSULATION	

3 WALL TYPE C  
A0.5 3' = 1'-0"

WALL TYPE C SCHEDULE		
TYPE MARK	DESCRIPTION (SIDE ONE / SIDE TWO)	COMMENTS
C1	PAINT / WALL COVERING EACH SIDE. 5/8" GYPSON BOARD SUBSTRATE	



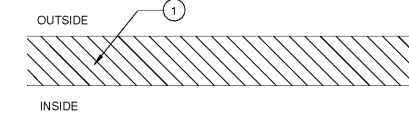
- FLOOR AND TOP RUNNERS - (NOT SHOWN) - 3 5/8" CHANNEL SHAPED, FABRICATED FROM 20 GA. CORROSION-PROTECTED STEEL, WITH MIN. 1" LONG LEGS, ATTACHED TO FLOOR WITH FASTENERS 24" O.C. MAX.
- STEEL STUDS - 3 5/8" CHANNEL SHAPED, FABRICATED FROM 20 GA. CORROSION-PROTECTED STEEL, MIN. 1 1/4" FLANGES AND 1/4" RETURN, SPACED 16" O.C.
- GYPSON WALLBOARD OR 5/8" DUROCK CEMENT BOARD WITH BEVELED, SQUARE OR TAPERED EDGES, APPLIED VERTICALLY OR HORIZONTALLY. VERTICAL JOINTS CENTERED OVER STUDS AND STAGGERED ONE STUD CAVITY ON OPPOSITE SIDES OF STUDS. HORIZONTAL EDGE JOINTS AND HORIZONTAL BUTT JOINTS ON OPPOSITE SIDES OF STUDS STAGGERED A MIN. OF 12".
- FASTENERS - (NOT SHOWN) - TYPE S OR S-12 SELF-DRILLING, SELF-TAPPING STEEL SCREWS USED TO ATTACH PANELS TO STUDS (ITEM 2), 1" LONG, SPACED 8" O.C. WHEN PANELS ARE APPLIED HORIZONTALLY, OR 12" O.C. WHEN PANELS ARE APPLIED VERTICALLY.
- JOINT TAPE AND COMPOUND - VINYL OR CASEIN, DRY OR PREMIXED JOINT COMPOUND APPLIED IN THREE COATS TO JOINTS AND SCREW HEADS OF OUTER LAYERS. PAPER TAPE, NOM 2" WIDE, EMBEDDED IN FIRST LAYER OF COMPOUND OVER ALL JOINTS OF OUTER PANELS

REFER TO DETAIL 2/A8.1 FOR LOW WALL DETAILING

4 WALL TYPE E  
A0.5 3' = 1'-0"

WALL TYPE E SCHEDULE		
TYPE MARK	DESCRIPTION	COMMENTS
E1	PAINT-WALL COVERING OVER 5/8" GYPSON WALL BOARD	
E2	BACK LINE WALL TILE OVER 2/8" CEMENT BOARD SUBSTRATE	
E3	FULL HEIGHT RESTROOM TILE OVER 5/8" CEMENT BOARD SUBSTRATE	
E4	FULL HEIGHT RESTROOM TILE OVER 5/8" CEMENT BOARD SUBSTRATE	

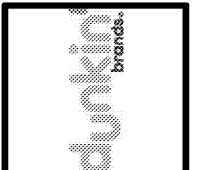
NOTES:  
 1. NOT ALL WALL TYPES WILL BE USED ON ALL PROJECTS. REFER TO FLOOR PLANS FOR WALL TYPES USED.  
 2. WALLS AND PARTITIONS WHICH EXCEED 6'-0" IN HEIGHT SHALL HAVE ADEQUATE ABILITY TO RESIST. A HORIZONTAL LOAD OF 5 PSF.  
 3. WALLS AND PARTITIONS WHICH EXCEED 8'-0" IN HEIGHT SHALL HAVE ADEQUATE ABILITY TO RESIST APPLICABLE LATERAL SEISMIC DESIGN FORCES.



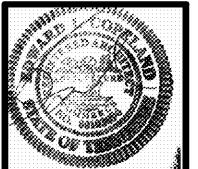
- EXTERIOR WALL - CONSTRUCTION VARIES REFER TO WALL TYPE "E" VARIATIONS FOR INSIDE FACE FINISH AND SUBSTRATE MATERIAL

No.	Date	Description

This Drawing and all associated designs are the property of COPELAND ARCHITECTURE and shall be returned upon completion of work. Use or copy is permitted by contract only. Unauthorized use will be prosecuted.



A NEW DARK ROAST STORE  
 DUNKIN' DONUTS  
 for  
 SHULER DEVELOPMENT  
 STORE 357/147  
 4880-4890 PORT ROYAL ROAD  
 SPRING HILL, TN 37174



WALL TYPES  
**EDWARD L. COPELAND, AIA**  
 4511 CHAMBLEE DUNWOODY ROAD, SUITE E-1  
 ATLANTA, GEORGIA 30338  
 PH. 770.551.9525 FAX 770.551.9524  
 WWW.COPELANDARCHITECTURE.COM

DRAWN BY: RMG
CHECKED BY: ELC
DATE: 07/07/17
SCALE: AS NOTED
C.A. COMMISSION NUMBER 1704
SHEET NAME WALL TYPES

SHEET NUMBER  
**A0.5**

RELEASED FOR CONSTRUCTION