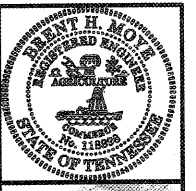


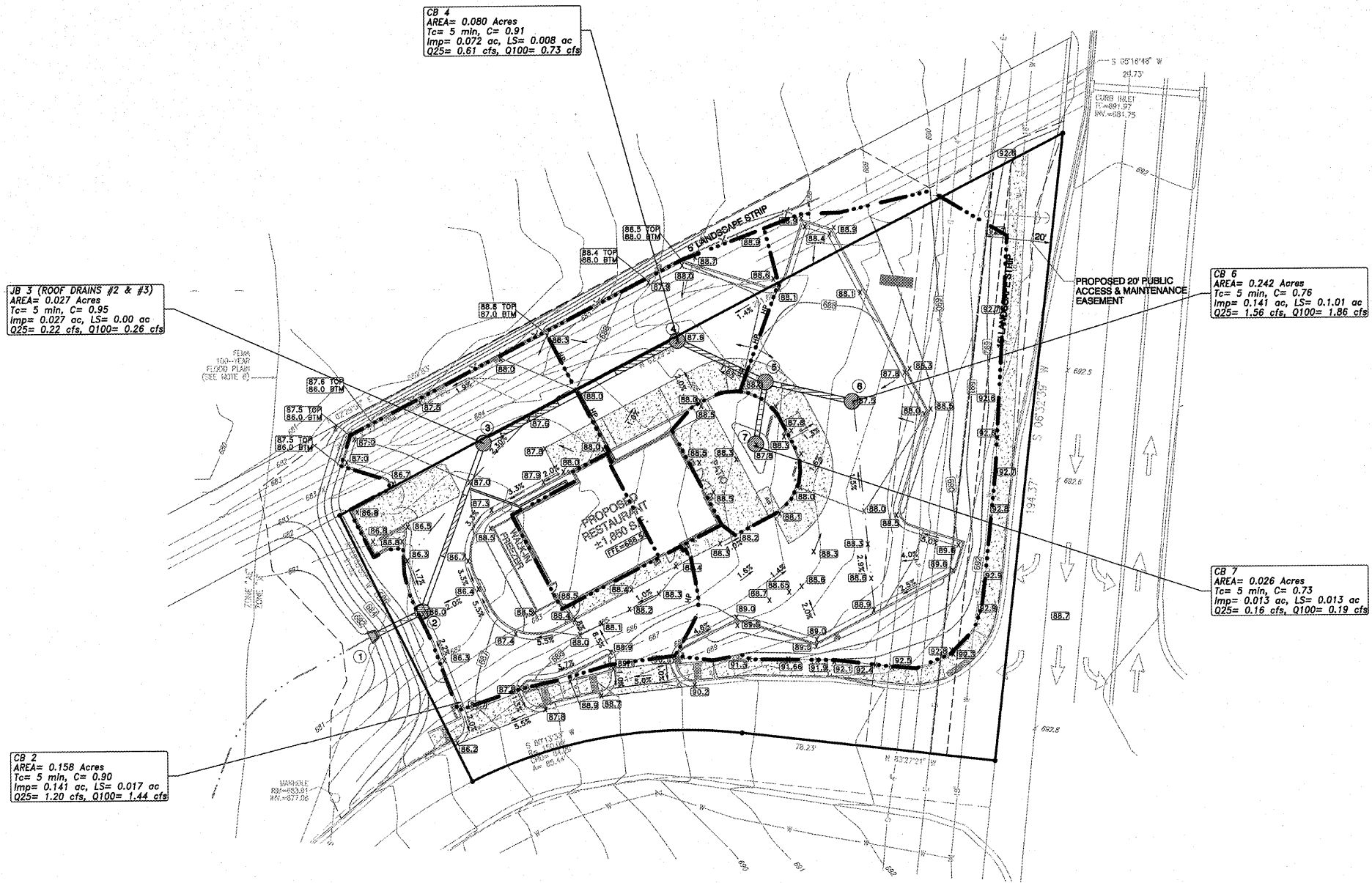
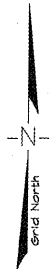
DRAINAGE NOTES

1. THIS DRAINAGE AREA PLAN DELINEATES THE BASINS TO EACH CONVEYANCE SYSTEM USING THE RATIONAL METHOD.
2. THIS PROJECT IS LOCATED ON LOT 5 OF THE RESERVE COMMERCIAL PARK NORTH. THE DEVELOPED SITE OF LOT 5 WAS INCLUDED IN THE ORIGINAL STORMWATER MANAGEMENT DESIGN. THE ORIGINAL DESIGN PROFESSIONAL, LEON STANFORD, IS TO PROVIDE THE CITY OF SPRING HILL WITH DOCUMENTATION OF THE ORIGINAL STORMWATER DESIGN THAT ALLOWS FOR THE RELEASE OF RUNOFF FROM THIS SITE INTO THE ADJACENT FLOODPLAIN LOCATED IN THE COMMON AREA.
3. TOTAL SITE AREA IS ±0.919 ACRES.
4. TOTAL IMPERVIOUS AREA IS ±0.510 AC NEW, ±0.078 AC EXISTING, ±0.589 AC TOTAL.



LEAD
Lead Investigation and Development

374 RaceTrack Rd, Suite B
McDonough, GA 30252
P 678.432.5772
F 678.432.5483



CB 3 (ROOF DRAINS #2 & #3)
AREA= 0.027 Acres
Tc= 5 min, C= 0.95
Imp= 0.027 ac, LS= 0.00 ac
Q25= 0.22 cfs, Q100= 0.26 cfs

CB 4
AREA= 0.080 Acres
Tc= 5 min, C= 0.91
Imp= 0.072 ac, LS= 0.008 ac
Q25= 0.61 cfs, Q100= 0.73 cfs

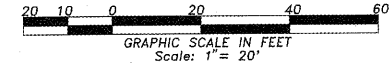
CB 5
AREA= 0.242 Acres
Tc= 5 min, C= 0.76
Imp= 0.141 ac, LS= 0.101 ac
Q25= 1.56 cfs, Q100= 1.86 cfs

CB 7
AREA= 0.026 Acres
Tc= 5 min, C= 0.73
Imp= 0.013 ac, LS= 0.013 ac
Q25= 0.16 cfs, Q100= 0.19 cfs

CB 2
AREA= 0.158 Acres
Tc= 5 min, C= 0.90
Imp= 0.141 ac, LS= 0.017 ac
Q25= 1.20 cfs, Q100= 1.44 cfs

- LEGEND**
- POB POINT OF BEGINNING
 - IPS IRON PIN SET
 - IPF IRON PIN FOUND
 - CMF CONCRETE MONUMENT FOUND
 - UP UTILITY POLE
 - LP LIGHT POLE
 - FP FLAG POLE
 - SSMH SANITARY SEWER MANHOLE
 - SDMH STORM DRAIN MANHOLE
 - DI DROP INLET
 - INV INVERT
 - FH FIRE HYDRANT
 - EP EDGE OF PAVEMENT
 - TC TOP OF CURB
 - BC BOTTOM OF CURB
 - TW TOP OF WALL
 - BW BOTTOM OF WALL
 - OU OVERHEAD UTILITY
 - UE UNDERGROUND UTILITY
 - CMP CORRUGATED METAL PIPE
 - RCP REINFORCED CONCRETE PIPE
 - PVC POLYVINYL CHLORIDE PIPE
 - GUY GUY WIRE ANCHOR
 - TR TRANSFORMER
 - JB JUNCTION BOX
 - SWCB SINGLE WING CATCH BASIN
 - DWCB DOUBLE WING CATCH BASIN
 - CLF CHAIN LINK FENCE
 - WV WATER VALVE
 - WM WATER METER
 - CO SEWER CLEAN-OUT
 - GV GAS VALVE

Developed Drainage Plan



24-HR CONTACT
ALLEN CURTIS
770-303-8200



Developed Drainage Basin Prepared For:

DUNKIN' DONUTS

Developer:
SHULER DEVELOPMENT, LLC.

6400 POWERS FERRY RD
SUITE 350
ATLANTA, GA 30339
770-303-8200

DATE	RELEASE DESCRIPTION
06-19-17	REVISED PER STAFF COMMENTS (06-16-17)
07-02-17	REVISED PER WORK SESSION COMMENTS (06-28-17)
07-07-17	REVISED PER CITY COMMENT
07-11-17	REVISED PER PLANNING COMMISSION COMMENTS

DATE: JUNE 11, 2017

THIRD CIVIL DISTRICT

A: Map Q27, 30.06

B: Map Q27, 01.02

CITY: SPRING HILL

COUNTY: MAURY

STATE: TENNESSEE

JOB NUMBER:
2016.095

10

10 OF 14 SHEETS