

1. THIS DRAWING IS THE PROPERTY OF A.L.R. ARCHITECTURE, P.A. AND IS NOT TO BE REPRODUCED OR COPIED IN WHOLE OR IN PART. IT IS NOT TO BE USED ON ANY OTHER PROJECT AND IS TO BE RETURNED ON REQUEST.

2. MATERIALS, FINISHES AND ALL OTHERS WHICH ARE NOT OTHERWISE SPECIFIED IN THIS DRAWING SHALL BE DETERMINED BY THE ARCHITECT. MATERIALS WHICH ARE SPECIFICALLY DEFINED THEREON SHALL BE USED UNLESS OTHERWISE NOTED ON THE PROJECT.

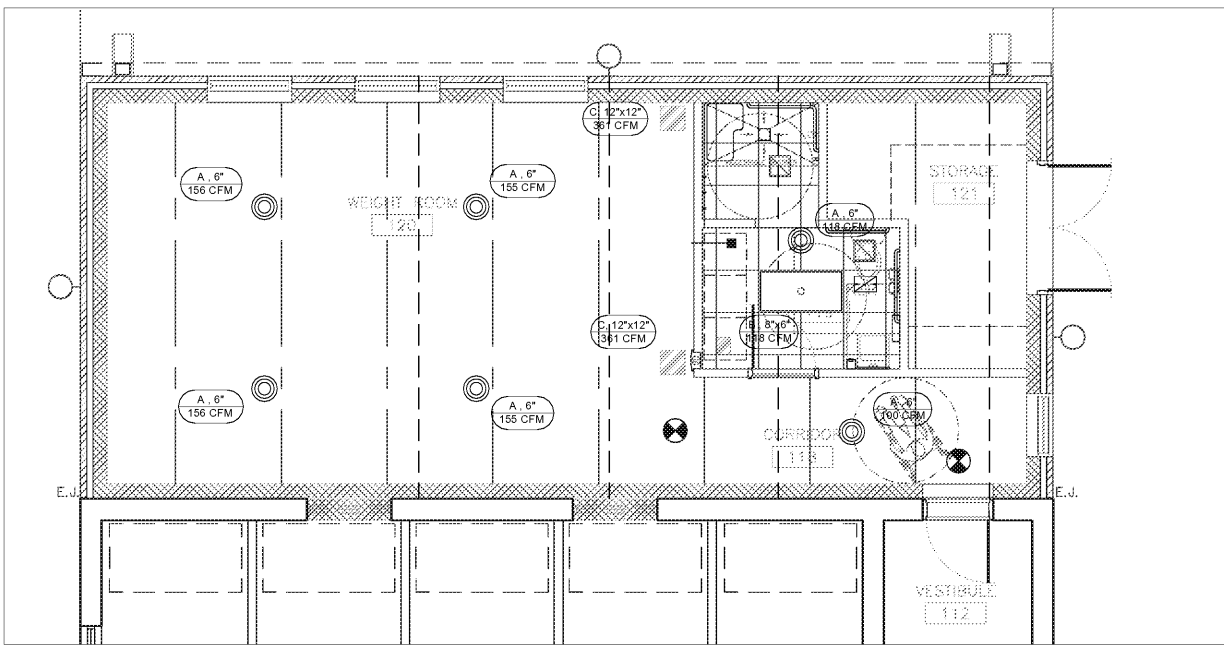
**Mechanical Installation Requirements**

1. Seal the joints airtight between package units and supply ducts. Seal joints above the roof and not traversing through the target spaces.
2. Airtight seals shall be field applied mastic complying with UL 181 A-M or mastic tape complying with UL 181 A-P.
3. Contractor will locate equipment as such so that maintenance personnel will have access to panels, control boards and valves.
4. Contractor will perform a test and balance of the system in accordance with the 2012 NCECC section 503.2.9. Test shall result in +5% to -5% of design flow.
5. Contractor will follow the latest SMANCA HVAC Duct Construction Standards for duct sheet thickness and fastening methods.
6. Condensation piping shall be constructed of PVC or CPVC and be routed a minimum of 18" away from equipment toward roof drain.
7. Support the duct routes with a maximum of 10' between centerline of supports.
8. Install 7 day programmable thermostat at 40° AFF. Wall mounted.
9. Install diffusers and grills in the open ceiling. Support air terminals, diffusers and grills independently. Do not rely on ceiling grid for support.
10. Interior ductwork is not insulated.
11. Route gas piping across the roof from natural gas meter to new rooftop unit. Support piping per NCMC at no greater than 10' between supports.
12. Provide and install restroom exhaust fan, controlled with single pull switch mounted in two gang box with restroom lighting, ceiling mounted.
13. Install ductwork as close to ceiling as possible.

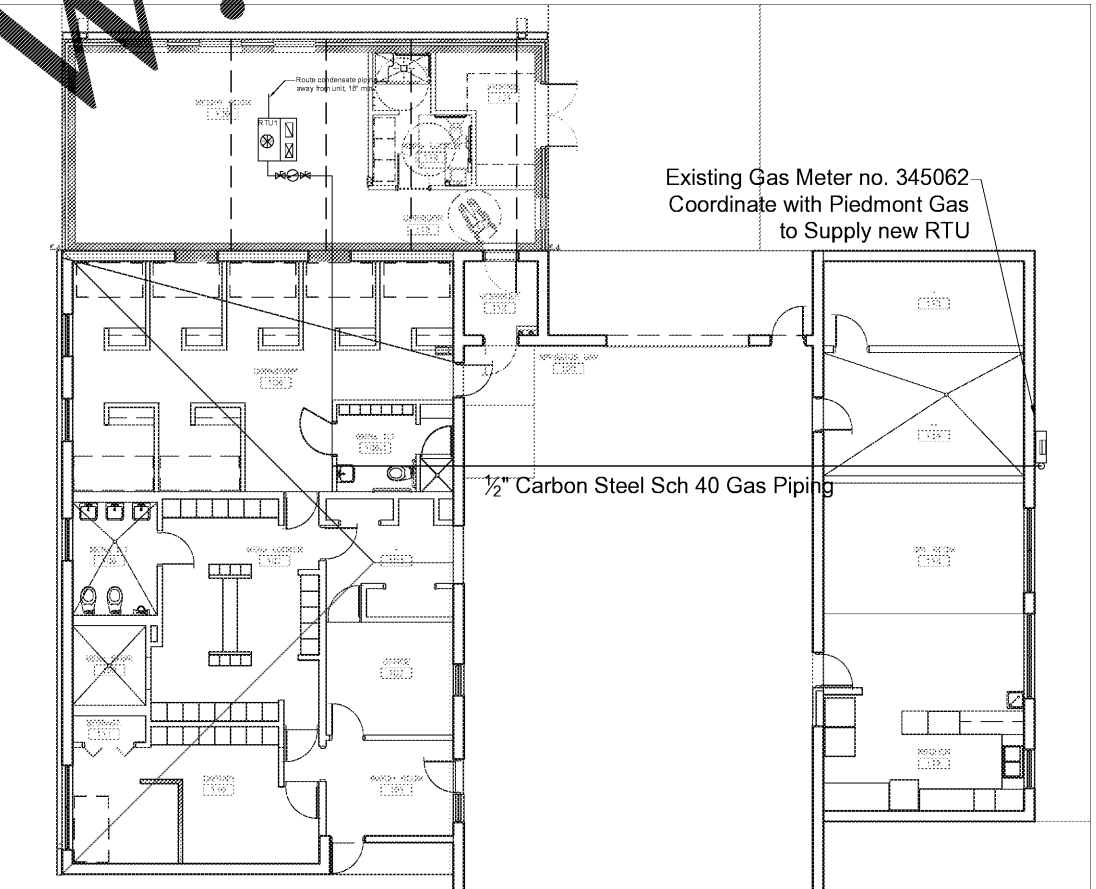
Revisions		
No.	Date	Descrip.

ADDITION FOR

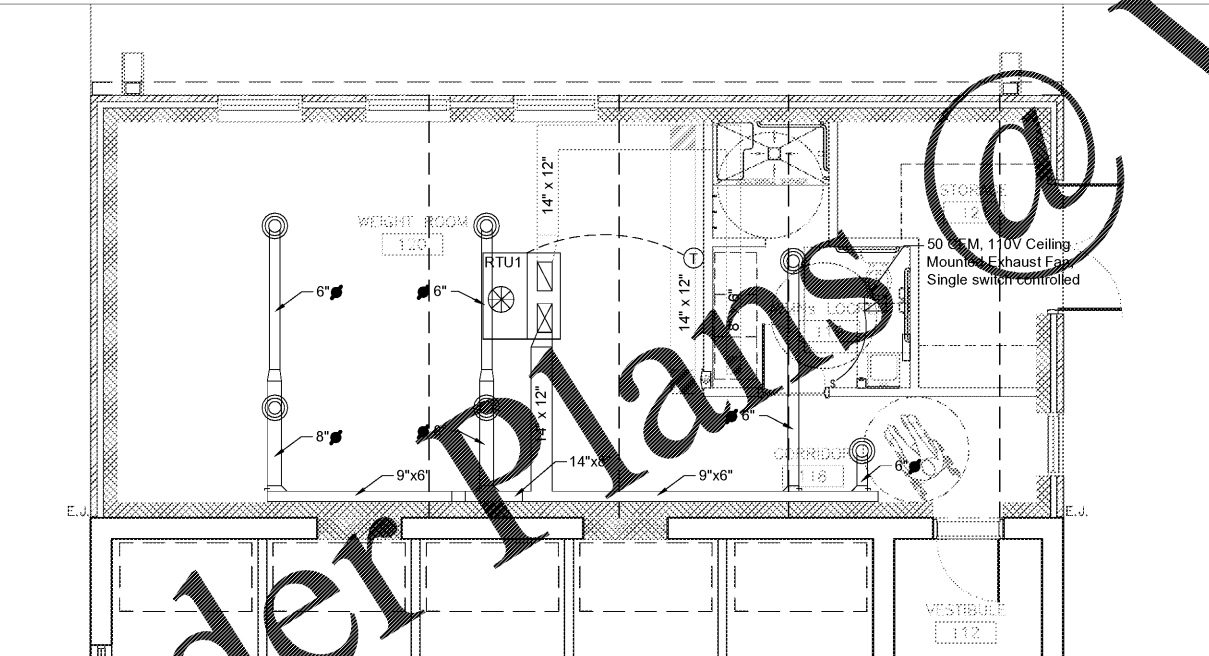
City of Charlotte  
Engineering & Property Management  
CFD  
FIRE STATION 15  
3617 FRONTENAC AVENUE  
CHARLOTTE, NC 28215



**2** Mechanical RCP Plan  
M1.1 Scale: 1/4" = 1' - 0"



**3** Mechanical Gas Piping Plan  
M1.1 Scale: 1/8" = 1' - 0"



**1** Mechanical Plan  
M1.1 Scale: 1/4" = 1' - 0"



07/25/2017

**AeroRaQ Engineering Inc**  
Engineering Services  
8511 Davis Parkway, Suite C6-205  
Charlotte, North Carolina 28269  
Firm License # C-3509  
Phone: 704-469-8463

**ALR**  
architects  
www.alr-arch.com  
317 East 21st, Suite 400  
Charlotte, NC 28202  
Phone: 704-376-2892  
Fax: 704-376-8888

Mechanical Plan
SHEET TITLE:
<b>M1.1</b>
SHEET NUMBER:
PROJECT# 8829-05
DATE: 12/07/15
00