

FINISH SCHEDULE

Room No.	Room	Floor	Base	Walls	CEILING	Notes
112	VESTIBULE	VCT	RB-1	PT-1	EXPOSED/PT-1	
118	CORRIDOR	RES-1	RB-1	PT-1	EXPOSED/PT-1	
119	WOMEN'S LOCKER ROOM	CT-1/CT-2	CERAMIC TILE	PT-1/CT3	ACP-2	CT-2 AT SHOWER ENCLOSURE FLOOR - SLOPE TOWARD DRAIN, CT-3 AT SHOWER ENCLOSURE WALLS ONLY
120	WEIGHT ROOM	RES-1	CPT-1	PT-1	EXPOSED/PT-1	PAINT ALL EXPOSED STEEL DECK, BAR JOISTS, MECHANICAL DUCTWORK, PLUMBING PIPING AND ELECTRICAL CONDUIT.
121	STORAGE	SEALED CONC.	RB-1	PT-1	EXPOSED/PT-1	PAINT ALL EXPOSED STEEL DECK, BAR JOISTS, MECHANICAL DUCTWORK, PLUMBING PIPING AND ELECTRICAL CONDUIT.

FINISH LEGEND:

CT-1	FLOOR TILE	12X12 PORCELAIN FLOOR TILE, Basis of Design: Daltile- "Volume 1.0"
CT-2	FLOOR TILE (Shower Enclosure)	6"x6" PORCELAIN FLOOR TILE, Basis of design: Daltile- "Volume 1.0", Slope toward drain.
CT-3	WALL TILE	6"x6" PORCELAIN TILE, SAME AS ABOVE, TILE UP TO 7'-4" HIGH ON ALL SHOWER WALLS AND BOTH SIDES OF WING WALL.
CPT-1	CARPET	BASIS OF DESIGN: TANDUS POWERBOND, APPLAUSE, 111, COLOR TO BE CHOSEN BY ARCHITECT FROM MANUF FULL LINE OF AVAILABLE COLORS
VCT	VINYL COMPOSITE TILE:	MANUFACTURED BY ARMSTRONG STANDARD EXCELON 12" X12" X 1/8"
ACP-1	ACOUSTIC CEILING TILE:	2' x 2' x 5/8" LAY-IN CEILING TILE IN 15/16" SUSPENSION SYSTEM. BASIS OF DESIGN CEILING TILE: ARMSTRONG CORTEGA FINE FISSURED; COLOR WHITE. BASIS OF DESIGN SUSPENSION SYSTEM: ARMSTRONG PRELUDE; COLOR WHITE.
ACP-2	ACOUSTIC CEILING TILE:	2' x 2' x 5/8" VINYL FACED LAY-IN CEILING TILE IN 15/16" SUSPENSION SYSTEM. BASIS OF DESIGN CEILING TILE: ARMSTRONG CLEAN ROOM VL, COLOR WHITE. BASIS OF DESIGN SUSPENSION SYSTEM: ARMSTRONG PRELUDE; COLOR WHITE.
PT-1	LATEX PAINT	EGG SHELL FINISH ON GWB, SEMI GLOSS ON METAL SURFACES
RB-1	RUBBER BASE	4" RUBBER BASE. Basis of Design: TBD

GENERAL NOTES:

- ALL FINISHES SHALL BE INTERIOR FINISH MATERIALS PER IBC SECTION 803.3, TABLE 803.3 AND SECTION 804.
- SIGNAGE: PROVIDE ONE ROOM SIGN PER TOILET ROOM DOOR; SIGN TO MEET ACCESSIBILITY CODE AND IBC SECTION 1110.
- PAINT ALL NEW AND EXISTING SURFACES IN THE NEW WORK AREA, INCLUDING: HOLLOW METAL, GWB, CMU.

DOOR SCHEDULE

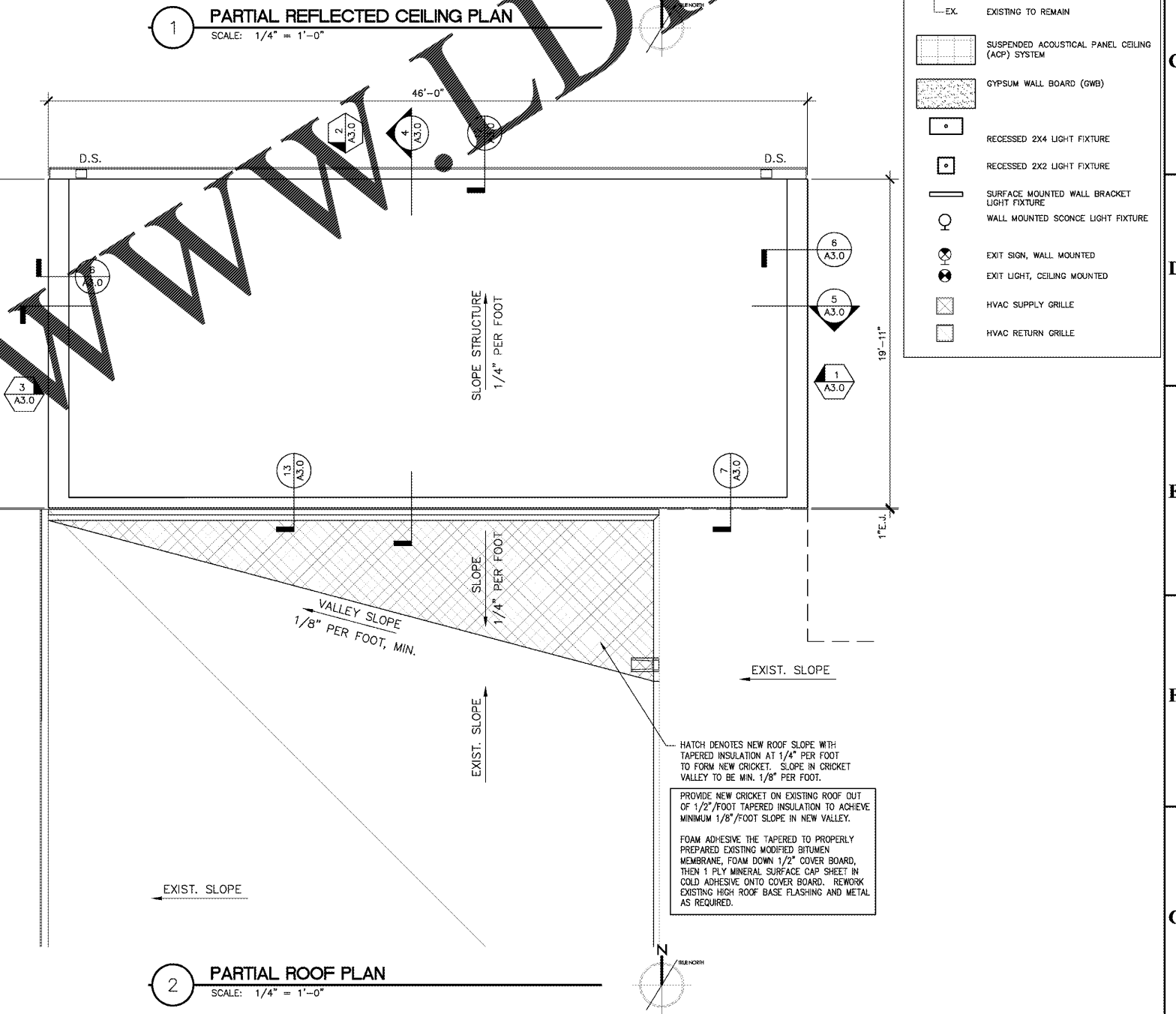
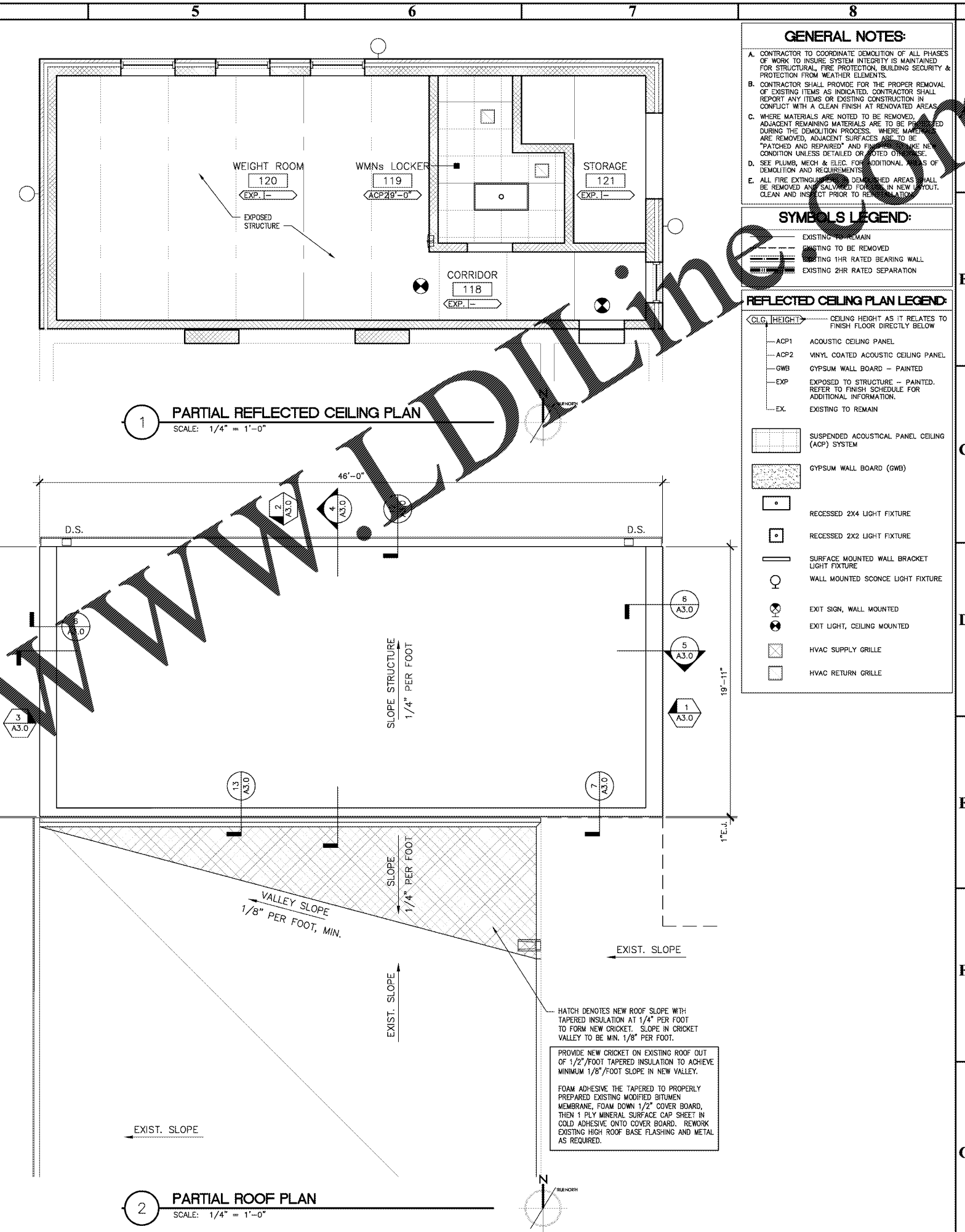
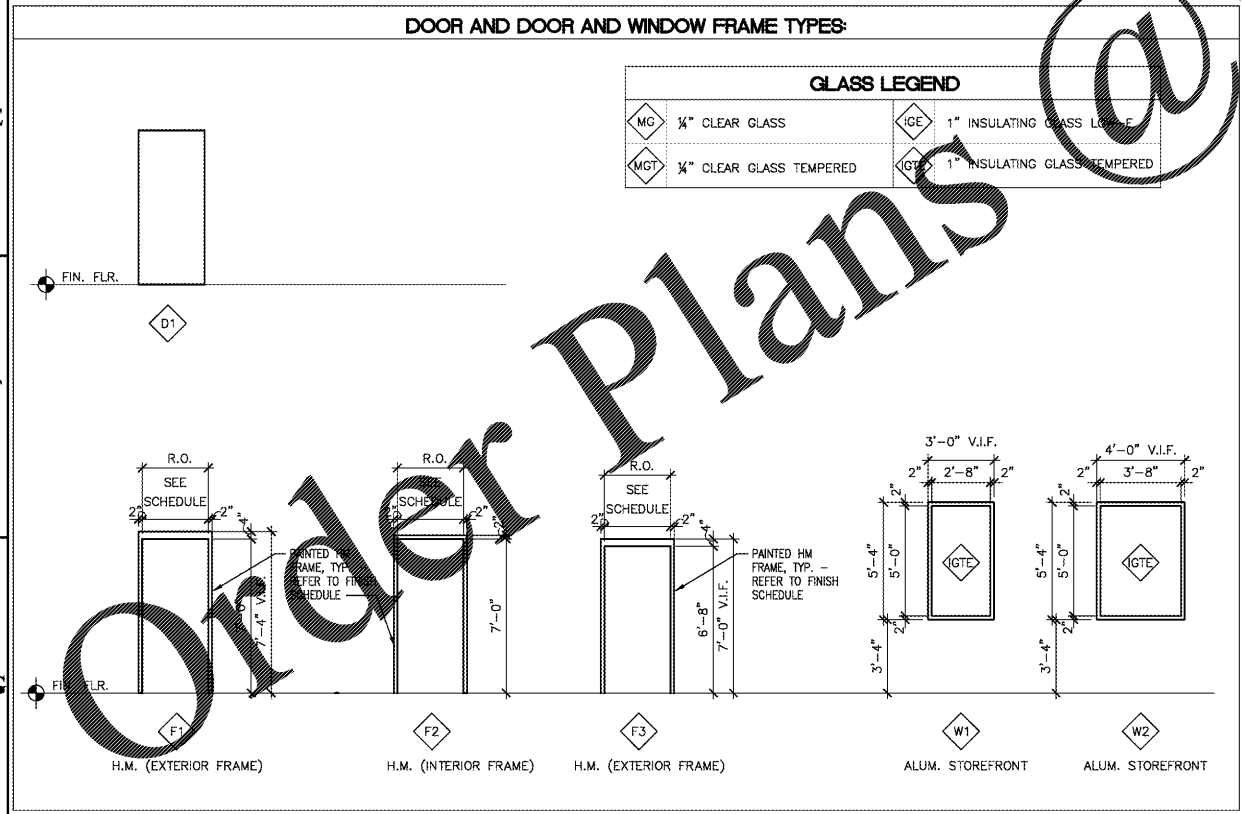
Door	Opening Size:	Door Type:	Material:	Finish:	Glass Type:	Frame Type:	Frame Material:	Notes:
118	3'-0" x 7'-0" x 3/4"	D1	FSCW	STAIN	N/A	F1	HM	
119	3'-0" x 7'-0" x 3/4"	D1	FSCW	STAIN	N/A	F2	HM	
121	(2) 3'-0" x 6'-8" x 3/4"	D1	HM	PAINT	N/A	F3	HM	NOTE CHANGE IN FINISH FLOOR ELEVATION

NOTES:

- All doors shall be 1 3/4" THK, UNLESS OTHERWISE NOTED.
- All door hardware shall comply ADA requirements, UNLESS OTHERWISE NOTED, all hardware, keyways shall be same grade, style, and lockset/keyways as is Owners established standard.
- All hollow metal doors and frames shall be extra heavy duty gauge and reinforcing, and shall be hot dipped galvanized or galvalume.

MATERIALS LEGEND:

EXST.	EXISTING TO REMAIN	WG	CLEAR WIRE GLASS
FSCW	FLUSH SOLID CORE WOOD	MGT	CLEAR GLASS TEMPERED
HM	HOLLOW METAL	IGE	INSULATED GLASS LOW-E
WD	WOOD	IGS	INSULATED GLASS SPANDREL
ALUM	ALUMINUM	POLY	POLYCARBONATE
S.S.	STAINLESS STEEL	VINYL	VINYL TRANSITION STRIP



GENERAL NOTES:

- CONTRACTOR TO COORDINATE DEMOLITION OF ALL PHASES OF WORK TO INSURE SYSTEM INTEGRITY IS MAINTAINED FOR STRUCTURAL, FIRE PROTECTION, BUILDING SECURITY & PROTECTION FROM WEATHER ELEMENTS.
- CONTRACTOR SHALL PROVIDE FOR THE PROPER REMOVAL OF EXISTING ITEMS AS INDICATED. CONTRACTOR SHALL REPORT ANY ITEMS OR EXISTING CONSTRUCTION IN CONFLICT WITH A CLEAN FINISH AT RENOVATED AREAS.
- WHERE MATERIALS ARE NOTED TO BE REMOVED, ADJACENT REMAINING MATERIALS ARE TO BE PROTECTED DURING THE DEMOLITION PROCESS. WHERE MATERIALS ARE REMOVED, ADJACENT SURFACES ARE TO BE "PATCHED AND REPAIRED" AND FINISHED TO LIKE NEW CONDITION UNLESS DETAIL OR NOTED OTHERWISE.
- SEE PLUMB, MECH & ELEC FOR ADDITIONAL PHASES OF DEMOLITION AND REQUIREMENTS.
- ALL FIRE EXTINGUISHING DEMOLISHED AREAS SHALL BE REMOVED AND SALVAGED FOR REUSE IN NEW LAYOUT. CLEAN AND INSPECT PRIOR TO RECONSTRUCTION.

SYMBOLS LEGEND:

	EXISTING TO REMAIN
	EXISTING TO BE REMOVED
	EXISTING 1HR RATED BEARING WALL
	EXISTING 2HR RATED SEPARATION

REFLECTED CEILING PLAN LEGEND:

CLG. HEIGHT	CEILING HEIGHT AS IT RELATES TO FINISH FLOOR DIRECTLY BELOW
ACP1	ACOUSTIC CEILING PANEL
ACP2	VINYL COATED ACOUSTIC CEILING PANEL
GWB	GYPSUM WALL BOARD - PAINTED
EXP	EXPOSED TO STRUCTURE - PAINTED. REFER TO FINISH SCHEDULE FOR ADDITIONAL INFORMATION.
EX	EXISTING TO REMAIN
	SUSPENDED ACOUSTICAL PANEL CEILING (ACP) SYSTEM
	GYPSUM WALL BOARD (GWB)
	RECESSED 2X4 LIGHT FIXTURE
	RECESSED 2X2 LIGHT FIXTURE
	SURFACE MOUNTED WALL BRACKET LIGHT FIXTURE
	WALL MOUNTED SCONCE LIGHT FIXTURE
	EXIT SIGN, WALL MOUNTED
	EXIT LIGHT, CEILING MOUNTED
	HVAC SUPPLY GRILLE
	HVAC RETURN GRILLE

ADDITION FOR

City of Charlotte
Engineering & Property Management

CFD
FIRE STATION 15
3617 FRONTENAC AVENUE
CHARLOTTE, NC 28215

07/25/2017

ALR
architecture
www.alr-arch.com

517 East Blvd., Suite 100
Charlotte, NC 28203

Phone: 704.348.2699
Fax: 704.348.5395

PARTIAL REFLECTED CEILING PLAN, ROOF PLAN AND SCHEDULES

SHEET TITLE:

A2.0

SHEET NUMBER:

PROJECT# **1608.05**

DATE: 07/25/2017

100% CD