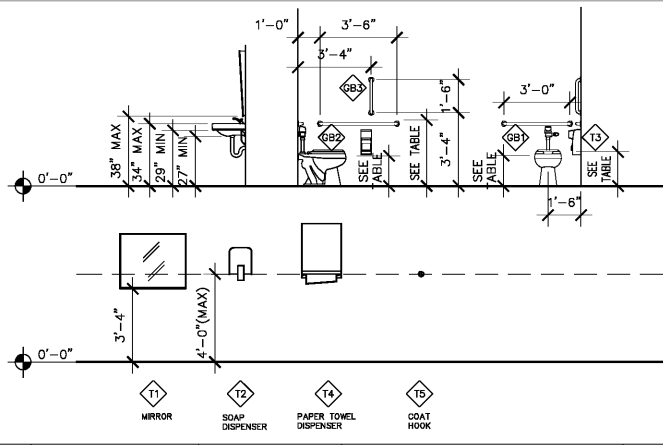


PLUMBING FIXTURE / TOILET ACCESSORIES SCHEDULE

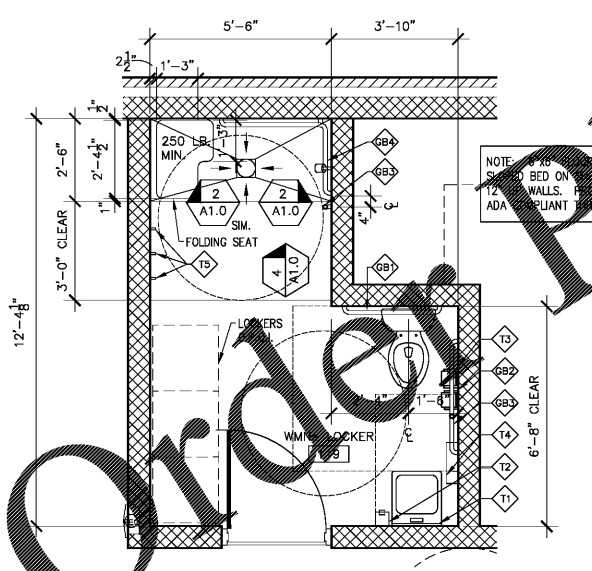


TAG	TOILET ACCESSORY:	MOUNTING HEIGHT:	MANUFACTURER:	NOTES
T1	WALL MOUNTED MIRROR	38" TO BOTTOM	STAINLESS-STEEL FRAMED; CHANNEL FRAMED; BASIS OF DESIGN: BOBRICK No. B-293-2436 (STAINLESS) 24"Wx36"H (OR EQUAL)	1,2
T2	HAND SOAP DISPENSER, SURFACE MOUNTED	48" MAX	SURFACE MOUNTED; BY OWNER	1,2
T3	TOILET TISSUE DISPENSER, SURFACE MOUNTED	18" MIN. A.F.F.	SURFACE MOUNTED; BASIS OF DESIGN: KIMBERLY CLARK No. 09021 (SMOKE) (6"x14"x7")	1,2
T4	PAPER TOWEL DISPENSER, SURFACE MOUNTED	40" TO BOTTOM, MIN.	SURFACE-MOUNTED; BASIS OF DESIGN: KIMBERLY CLARK SANITOUCH ROLL TOWEL DISPENSER No. 0990, COLOR: SMOKE	1,2
T5	COAT HOOK	48" CENTER	BASIS OF DESIGN: BOBRICK Mod. No. B 211	2
GB	36" GRAB BAR	33" MIN.-36" MAX	STAINLESS STEEL; BASIS OF DESIGN: BOBRICK MOD. NO. B-680636	1,2,4
GB2	42" GRAB BAR	33" MIN.-36" MAX	STAINLESS STEEL; BASIS OF DESIGN: BOBRICK MOD. NO. B-680642	1,2,4
GB3	18" GRAB BAR - VERTICAL	REFER TO DETAIL	STAINLESS STEEL; BASIS OF DESIGN: BOBRICK MOD. NO. B-680618	1,2,4
GB4	TWO-WALL GRAB BAR	REFER TO ENLARGED PLAN	STAINLESS STEEL; BASIS OF DESIGN: BOBRICK MOD. NO. B-68616	1,2,4

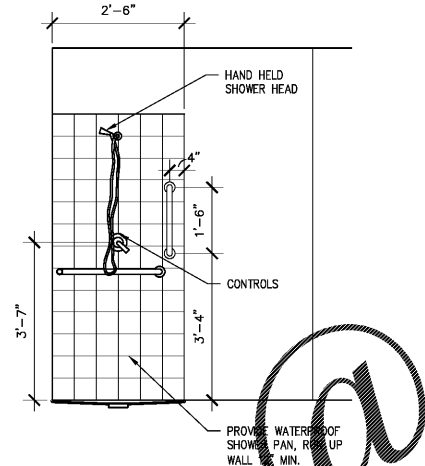
- NOTES
1. PROVIDE ADEQUATE BLOCKING AS REQUIRED FOR TOILET ACCESSORIES.
 2. ALL FIXTURES AND ACCESSORIES SHALL MEET SOUTH CAROLINA BUILDING CODE AND ACCESSIBILITY REQUIREMENTS.
 3. (U.L.G.) PROVIDE UNDER-LAVATORY GUARDS - BROCAR PRODUCTS, TRUEBRO, INC. OR APPROVED EQUAL.
 4. INSTALL GRAB BARS TO WITHSTAND A DOWNWARD LOAD OF AT LEAST 250 LBF, WHEN TESTED ACCORDING TO METHOD IN ASTM F 446.

PLUMBING FIXTURE:	MOUNTING HEIGHT:	NOTES
ADULT WATER CLOSET - ACCESSIBLE	17" MIN-19" MAX	-
LAVATORIES	18" CL. TO WALL	-
LAVATORIES - ACCESSIBLE	36" MAX.	A

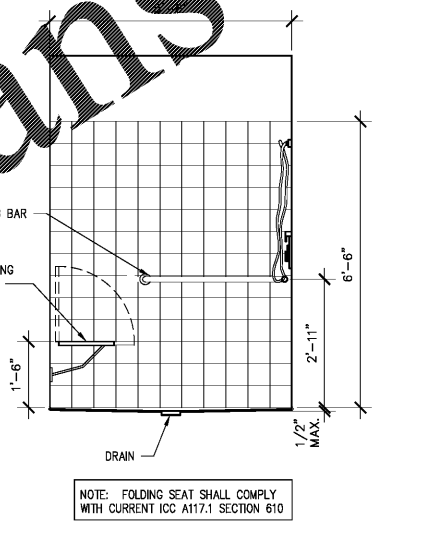
- NOTES
1. PROVIDE UNDERLAVATORY GUARDS (U.L.G.)



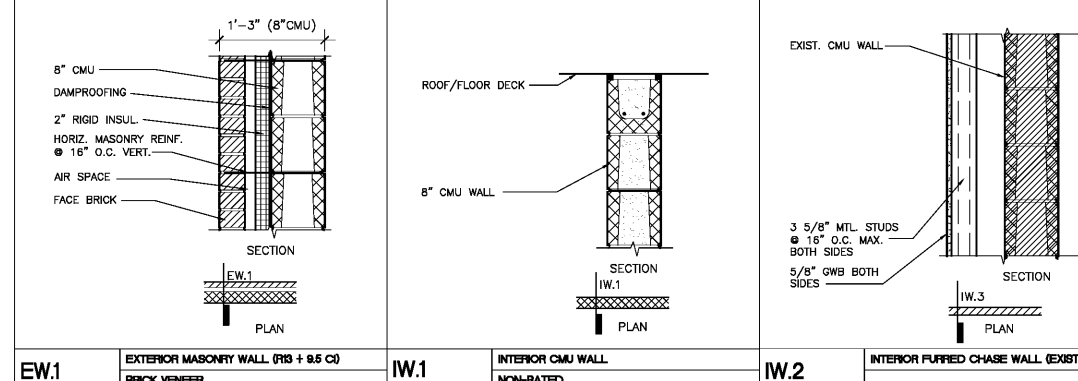
3 WOMEN'S LOCKER ROOM SCALE: 3/8" = 1'-0"



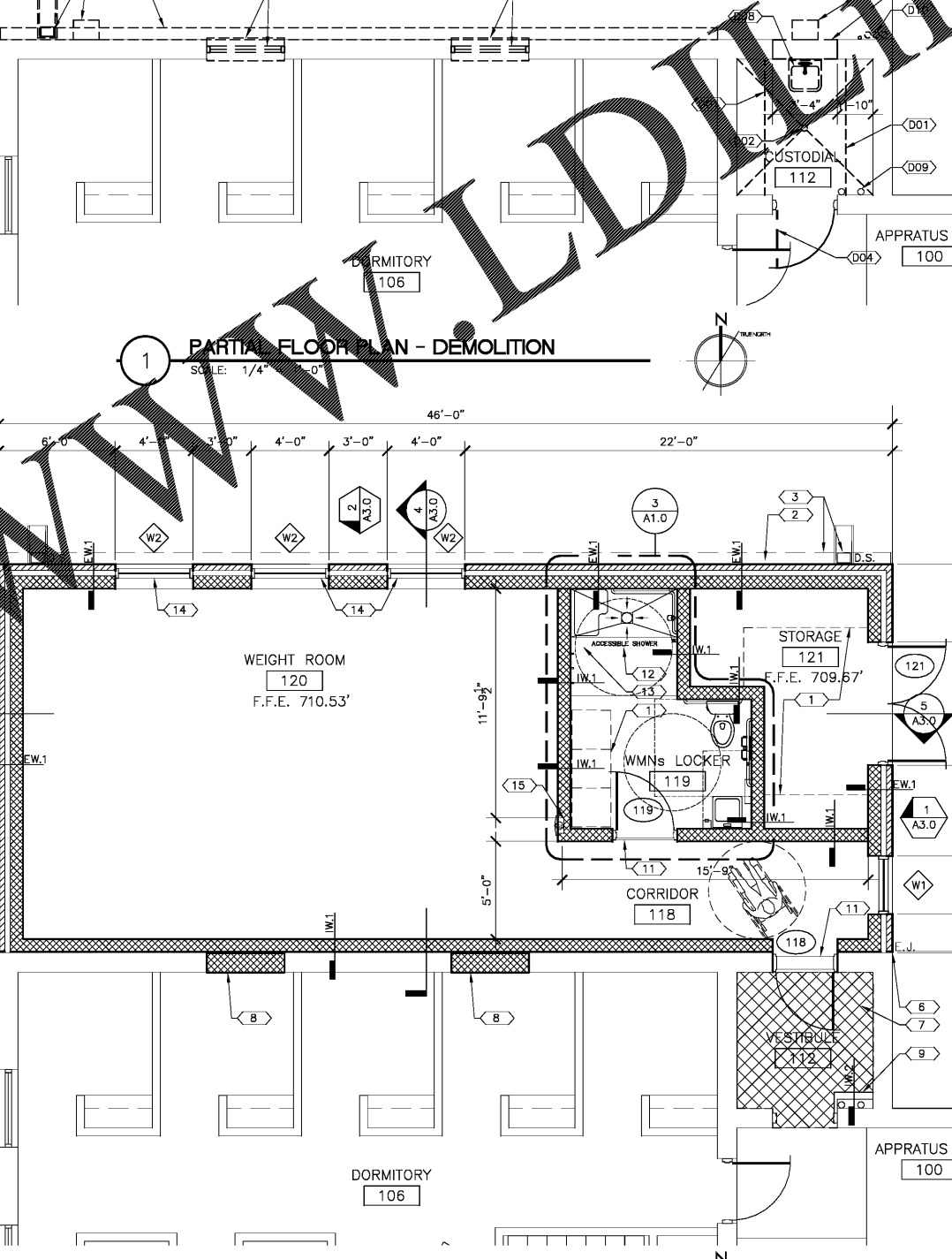
2 ELEVATION - ACCESSIBLE SHOWER SCALE: 1/4" = 1'-0"



4 ELEVATIONS - ACCESSIBLE SHOWER SCALE: 1/4" = 1'-0"



EW.1 EXTERIOR MASONRY WALL (PB + BS C) BRICK VENEER
IW.1 INTERIOR CMU WALL NON-RATED
IW.2 INTERIOR FURRED CHASE WALL (EXISTING CMU)



5 PARTIAL FLOOR PLAN - CONSTRUCTION SCALE: 1/4" = 1'-0"

GENERAL NOTES:

- CONTRACTOR TO COORDINATE DEMOLITION OF ALL PHASES OF WORK TO INSURE SYSTEM INTEGRITY IS MAINTAINED FOR STRUCTURAL, FIRE PROTECTION, BUILDING SECURITY & PROTECTION FROM WEATHER ELEMENTS.
- CONTRACTOR SHALL PROVIDE FOR THE PROPER REMOVAL OF EXISTING ITEMS AS INDICATED. CONTRACTOR SHALL REPORT ANY ITEMS OF EXISTING CONSTRUCTION IN CONFLICT WITH A CLEAN FINISH AT RENOVATED AREAS.
- WHERE MATERIALS ARE NOTED TO BE REMOVED, ADJACENT REMAINING MATERIALS ARE TO BE PROTECTED DURING THE DEMOLITION PROCESS. WHERE MATERIALS ARE REMOVED, ADJACENT SURFACES ARE TO BE "PATCHED AND REPAIRED" AND FINISHED TO MATCH NEARBY CONDITION UNLESS DETAILED OR NOTED OTHERWISE.
- SEE PLUMB, MECH & ELEC FOR ADDITIONAL DETAILS OF DEMOLITION AND REQUIREMENTS.
- ALL FIRE EXTINGUISHERS IN DEMOLISHED AREAS SHALL BE REMOVED AND SALVAGED FOR REUSE IN NEW LAYOUT. CLEAN AND INSPECT PRIOR TO RECONSTRUCTION.

SYMBOLS LEGEND:

- EXISTING TO REMAIN
- EXISTING TO BE REMOVED

KEY NOTES:

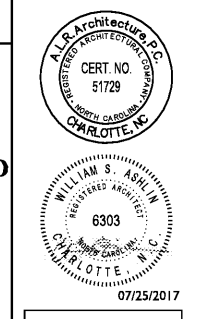
1. OWNER PROVIDED OWNER INSTALLED (O.P.O.I.) FURNITURE AND/OR EQUIPMENT SHOWN FOR REFERENCE. CONTRACTOR TO COORDINATE WITH OWNER'S REPRESENTATIVE.
2. REFER TO CIVIL DWGS FOR ALL FINISHED GRADES.
3. PROVIDE PRE-FABRICATED PRE-FINISHED GUTTER AND RAIN WATER LEADER WITH CONCRETE SPLASH BLOCK.
4. NOT USED
5. NOT USED
6. EXPANSION JOINT SEALANT COLOR SELECTION BY ARCHITECT
7. HATCH PATTERN DENOTES AREA OF CONCRETE SLAB SUBSTRATE TO RECEIVE SELF-LEVELING COMPOUND. PREPARE SURFACE TO RECEIVE NEW FLOOR FINISH - REFER TO FINISH SCHEDULE.
8. NEW MASONRY INFILL. FINISH TO MATCH ADJACENT SURFACES.
9. FRAMED CHASE TO ENCASE EXISTING RAIN WATER LEADER. ADJUST EXISTING ELECTRICAL DEVICES - REFER TO E-DWGS.
10. NOT USED
11. ADA COMPLIANT THRESHOLD
12. SLOPE SHOWER FLOOR TO DRAIN.
13. PROVIDE SHOWER ROD AND CURTAIN.
14. PROVIDE ALUMINUM HORIZONTAL LOUVER BLINDS AND MATCHING VALANCE. COLOR SELECTION TO BE APPROVED BY OWNER.
15. FIRE EXTINGUISHER CABINET (FEC).

1. THIS DRAWING IS THE PROPERTY OF ALR ARCHITECTURE, P.A. AND IS NOT TO BE REPRODUCED OR COPIED IN WHOLE OR IN PART. IT IS NOT TO BE USED ON ANY OTHER PROJECT AND IS TO BE RETURNED ON REQUEST.

2. MATERIALS, DIMENSIONS AND ALL OTHER CONDITIONS WHICH ARE NOT OTHERWISE DEFINED ON THIS DRAWING SHALL BE CONSIDERED AS HAVING THE SAME MEANING AS INDICATED CONDITIONS ARE MORE FULLY DEFINED THEREON ON THIS PROJECT OR OTHER DRAWINGS FOR THIS PROJECT.

Revisions	Date	Descrip.

ADDITION FOR
City of Charlotte
Engineering & Property Management
CFD
FIRE STATION 15
3617 FRONTENAC AVENUE
CHARLOTTE, NC 28215



ALR architecture
www.alr-arch.com
517 East Blvd, Suite 100
Charlotte, NC 28208
Phone: 704.348.2699
Fax: 704.348.5399

FLOOR PLAN - DEMO AND CONSTRUCTION AND ENLARGED PLAN
SHEET TITLE:

A10
SHEET NUMBER:
PROJECT# 1608.05
DATE: 07/25/2017

100% CD