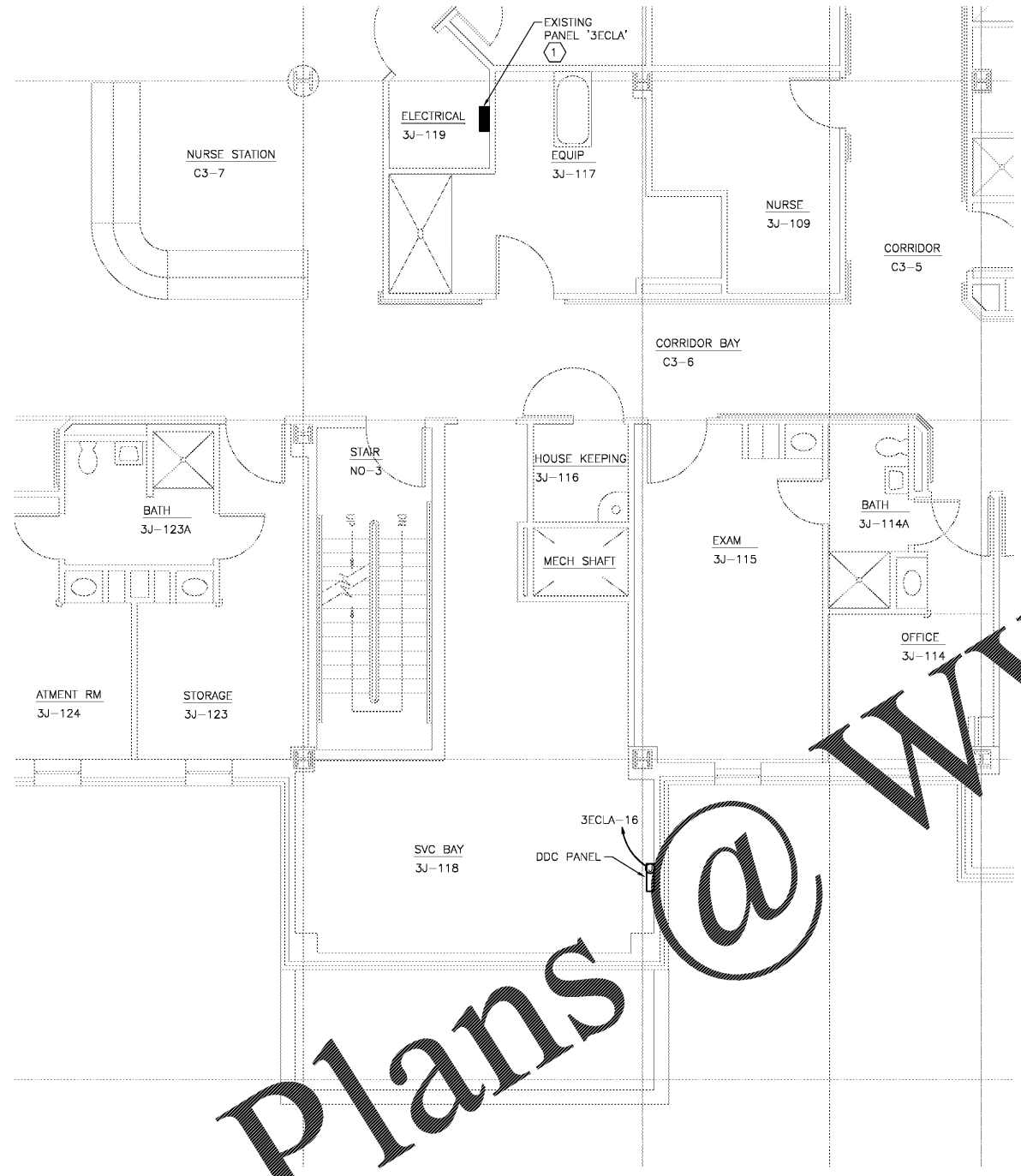


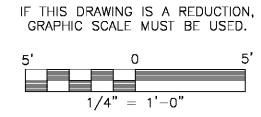
nine inches = one foot
 six inches = one foot
 one and one half inches = one foot
 one inch = one foot
 three quarters inch = one foot
 one half inch = one foot
 three eighths inch = one foot
 one quarter inch = one foot
 one eighth inch = one foot
 one sixteenth inch = one foot

GENERAL NOTES:
 1. LIGHT LINE WEIGHT INDICATES EXISTING TO REMAIN AND HEAVY LINE WEIGHT INDICATES NEW WORK.

NOTES:
 (1) PROVIDE 1 NEW CIRCUIT FROM EXISTING PANEL '3ECLA'. NEW CIRCUIT WILL FEED NEW DDC CONTROL PANEL. PROVIDE ONE NEW CIRCUIT BREAKER (1-POLE, 20AMP) ON POLE 16. PROVIDE 12, 1#12EGG IN A 3/4" EMT TO NEW CIRCUIT. EXISTING PANEL '3ECLA' IS BY GE TYPE AQF AND UTILIZES TYPE THQB CIRCUIT BREAKER. UPDATE PANEL DIRECTORY ACCORDINGLY.



ENLARGED THIRD FLOOR NEW WORK PLAN - BUILDING 143 - ELECTRICAL
 SCALE: 1/4" = 1'-0"



Order Plans @ www.LDILine.com

	 <small>Atriax, pllc 102 3rd Avenue, NE PO Box 1829, Hickory, NC 28603 Phone: 828.315.9982 Fax: 828.315.9984 www.atriaxgroup.com</small>	 <small>WileyWilson 127 Nelonwide Drive Lynchburg, VA 24502 Phone: 434.947.1901 www.wileywilson.com</small>	 <small>STEPHEN A. BOHMER State No. 28577 4/28/2017 PROFESSIONAL ENGINEER</small>	Approved: Energy Engineer	Approved: Safety Manager	Approved: Service Chief	Drawing Title EP-108 BUILDING 143 - THIRD FLOOR ELECTRICAL FLOOR PLANS	Project Title RENOVATE FOR WATER QUALITY	Date 04/28/2017		
				CONSTRUCTION DOCUMENTS	Approved: Infection Control Officer	Approved: Chief of Staff	Approved: Chief of Facility Management Svc.	Building Number 143	Checked SAB	Drawn JWG	Project No. 658-15-101
					Approved: GEMS Coordinator	Approved: Associate Director	Approved: Medical Center Director	Drawing Set 2592	Location VA MEDICAL CENTER, SALEM, VA 24153	Dwg. 151 Of 155	Veterans Affairs