

three inches = one foot
 one and one half inches = one foot
 one inch = one foot
 three quarters inch = one foot
 one half inch = one foot
 three eighths inch = one foot
 one eighth inch = one foot
 one quarter inch = one foot
 one eighth inch = one foot

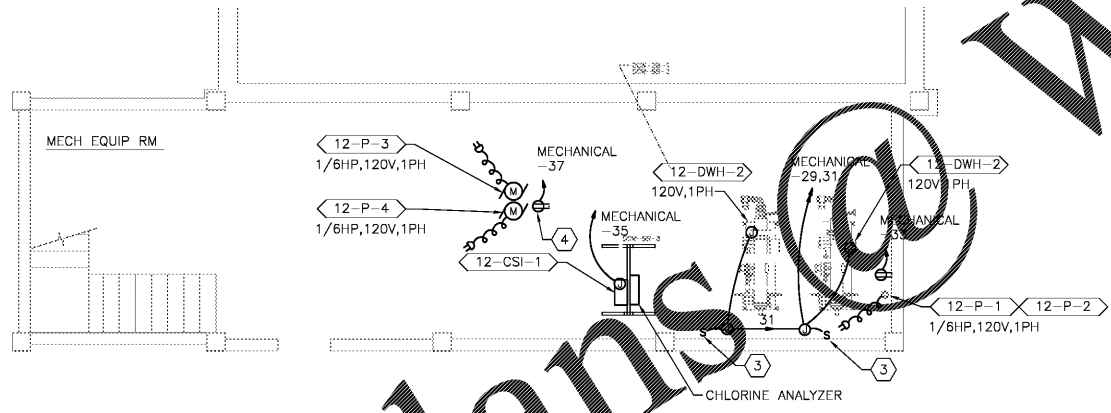
GENERAL NOTES:

1. LIGHT LINE WEIGHT INDICATES EXISTING AND HEAVY LINE WEIGHT INDICATES NEW WORK AS APPLICABLE.

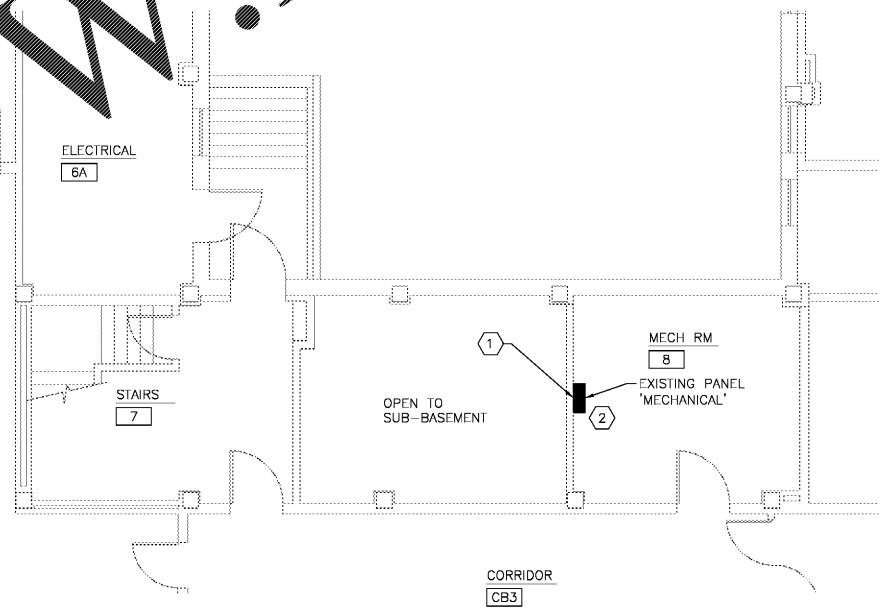
NOTES:

1. PROVIDE FIRE STOP AROUND EACH CONDUIT THAT PENETRATES WALLS OF THE MECHANICAL ROOMS.
2. PROVIDE 5 NEW CIRCUITS FROM EXISTING PANEL 'MECHANICAL'. NEW CIRCUITS WILL FEED ALL NEW MECHANICAL EQUIPMENT. PROVIDE 5 NEW CIRCUIT BREAKERS (1-POLE, 20AMP) ON POLES 29,31,33,35, AND 37. PROVIDE 2#12, 1#12EGC IN A 3/4" EMT FOR EACH NEW CIRCUIT. SHARING OF CONDUITS IS ALLOWED AND MORE THAN 3 CIRCUITS MUST BE DE-RATED ACCORDING TO THE NEC. EXISTING PANEL 'MECHANICAL' IS BY FPE AND UTILITIES TO BE THQB CIRCUIT BREAKERS. UPDATE PANEL DIRECTORY ACCORDINGLY.
3. PROVIDE A SINGLE POLE 120V SWITCH TO CONTROL DOMESTIC WATER HEATER CONTROL PANEL. MOUNT ON WALL 10" AFF.
4. SURFACE MOUNT RECEPTACLE ON CEILING FOR PUMPS.

WWW.LDILine.com



ENLARGED SUB-BASEMENT NEW WORK PLAN - BUILDING 12 - ELECTRICAL
SCALE: 1/4" = 1'-0"



ENLARGED BASEMENT NEW WORK PLAN - BUILDING 12 - ELECTRICAL
SCALE: 1/4" = 1'-0"

IF THIS DRAWING IS A REDUCTION,
 GRAPHIC SCALE MUST BE USED.
 5' 0 5'
 1/4" = 1'-0"

Order Plans

Revisions Date	 Atriax, pllc 102 3rd Avenue, NE PO Box 1829 Hickory, NC 28603 Phone: 828.315.9982 Fax: 828.315.9984 www.atriaxgroup.com	 WileyWilson 127 Nelonwide Drive Lynchburg, VA 24502 Phone: 434.947.1901 www.wileywilson.com		Approved: Energy Engineer	Approved: Safety Manager	Approved: Service Chief	Drawing Title EP-105 BUILDING 12 ELECTRICAL FLOOR PLANS	Project Title RENOVATE FOR WATER QUALITY			Date 04/28/2017	Veterans Affairs			
				CONSTRUCTION DOCUMENTS				Approved: Infection Control Officer	Approved: Chief of Staff	Approved: Chief of Facility Management Svc.	Building Number 12		Checked SAB	Drawn JWG	Project No. 658-15-101
								Approved: GEMS Coordinator	Approved: Associate Director	Approved: Medical Center Director	Location VA MEDICAL CENTER, SALEM, VA 24153		DRAWING SET 2592		Dwg. 148 Of 155