

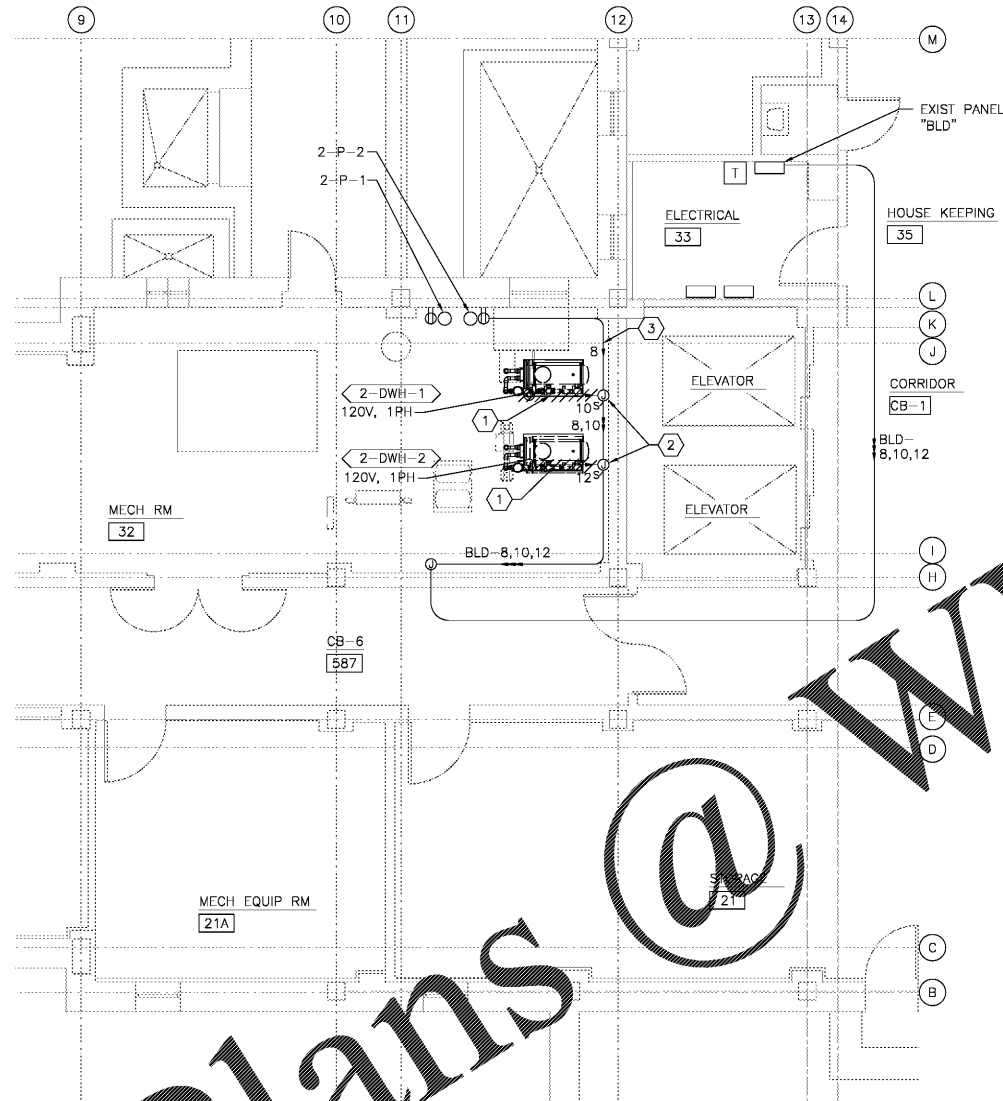
three inches = one foot
 one and one half inches = one foot
 one inch = one foot
 three quarters inch = one foot
 one half inch = one foot
 one quarter inch = one foot
 three eighths inch = one foot
 one eighth inch = one foot

GENERAL NOTES:

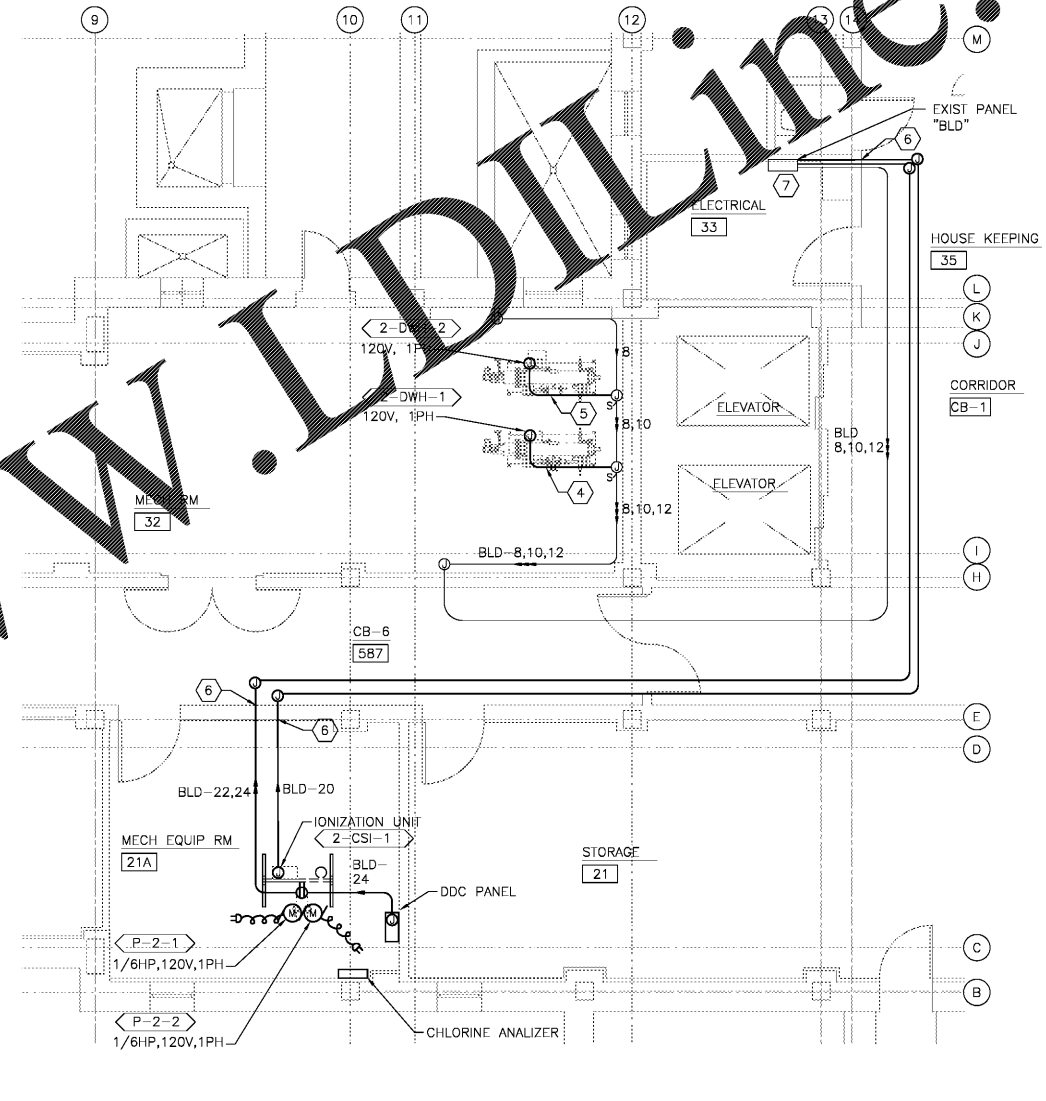
1. LIGHT LINE WEIGHT INDICATES EXISTING TO REMAIN AND HEAVY LINE WEIGHT INDICATES DEMOLITION OR NEW WORK AS APPLICABLE.

NOTES:

- 1 REMOVE 3/4" FLEXIBLE LIQUID-TIGHT AND CONDUCTORS BACK TO SWITCHES IN JUNCTION BOXES. SWITCH AND JUNCTION BOX IS EXISTING TO REMAIN AND BE REUSED TO FEED NEW WATER HEATERS.
- 2 EXISTING SWITCH AND JUNCTION BOX IS TO REMAIN AND BE REUSED TO FEED WATER HEATERS.
- 3 CIRCUIT BLD-8 CONDUIT AND CONDUCTORS ARE EXISTING TO REMAIN FROM CIRCUITS SHOWN TO PANEL "BLD."
- 4 PROVIDE 2#12,1#12EGC IN 3/4" LIQUID-TIGHT FLEXIBLE CONDUIT FROM EXISTING SWITCH TO NEW DOMESTIC WATER HEATER 2-DWH-1. REUSE EXISTING SWITCH. THE SWITCH IS THE WATER HEATERS DISCONNECT. REUSE EXISTING CIRCUIT BLD-12.
- 5 PROVIDE 2#12,1#12EGC IN 3/4" LIQUID-TIGHT FLEXIBLE CONDUIT FROM EXISTING SWITCH TO NEW DOMESTIC WATER HEATER 2-DWH-2. REUSE EXISTING SWITCH. SWITCH IS THE WATER HEATERS DISCONNECT. REUSE EXISTING CIRCUIT BLD-10.
- 6 PROVIDE FIRE STOP AT ALL WALL PENETRATION INTO MECHANICAL ROOMS.
- 7 PROVIDE 3 NEW CIRCUIT BREAKERS IN PANEL "BLD." THE CIRCUIT BREAKERS WILL FEED NEW EQUIPMENT SHOWN. PROVIDE SINGLE-POLE 20AMP CIRCUIT BREAKERS ON POLES NOTED. EXISTING PANEL "BLD" IS BY CUTLER-HAMMER TYPE PRL-1A AND USES TYPE BA CIRCUIT BREAKERS. PROVIDE 2#12, 1#12EGC IN 3/4" EMT CONDUIT TO EACH CIRCUIT. UPDATE PANEL DIRECTORY ACCORDINGLY.



ENLARGED BASEMENT DEMOLITION PLAN - BUILDING 2 - ELECTRICAL
SCALE: 1/4" = 1'-0"



ENLARGED BASEMENT NEW WORK PLAN - BUILDING 2 - ELECTRICAL
SCALE: 1/4" = 1'-0"

IF THIS DRAWING IS A REDUCTION,
GRAPHIC SCALE MUST BE USED.

Order Plans @ WWW.LDILine.com

	 Atrix, pllc 102 3rd Avenue, NE PO Box 1829 Hickory, NC 28603 Phone: 828.315.9982 Fax: 828.315.9984 www.atrigroup.com	 WileyWilson 127 Nelonwide Drive Lynchburg, VA 24502 Phone: 434.947.1901 www.wileywilson.com		Approved: Energy Engineer <hr/> CONSTRUCTION DOCUMENTS	Approved: Safety Manager <hr/> Approved: Infection Control Officer <hr/> Approved: GEMS Coordinator	Approved: Service Chief <hr/> Approved: Chief of Staff <hr/> Approved: Associate Director	Drawing Title EP-102 BUILDING 2A ELECTRICAL FLOOR PLANS	Project Title RENOVATE FOR WATER QUALITY	Date 04/28/2017 <hr/> Project No. 658-15-101	Building Number 2 <hr/> Checked SAB <hr/> Drawn JWG	DRAWING SET 2592 <hr/> Dwg. 144 Of 155	Veterans Affairs	
Revisions <table border="1" style="width: 100%; border-collapse: collapse;"> <tr><td style="width: 80%;"> </td><td style="width: 20%;">Date</td></tr> </table>		Date											
	Date												