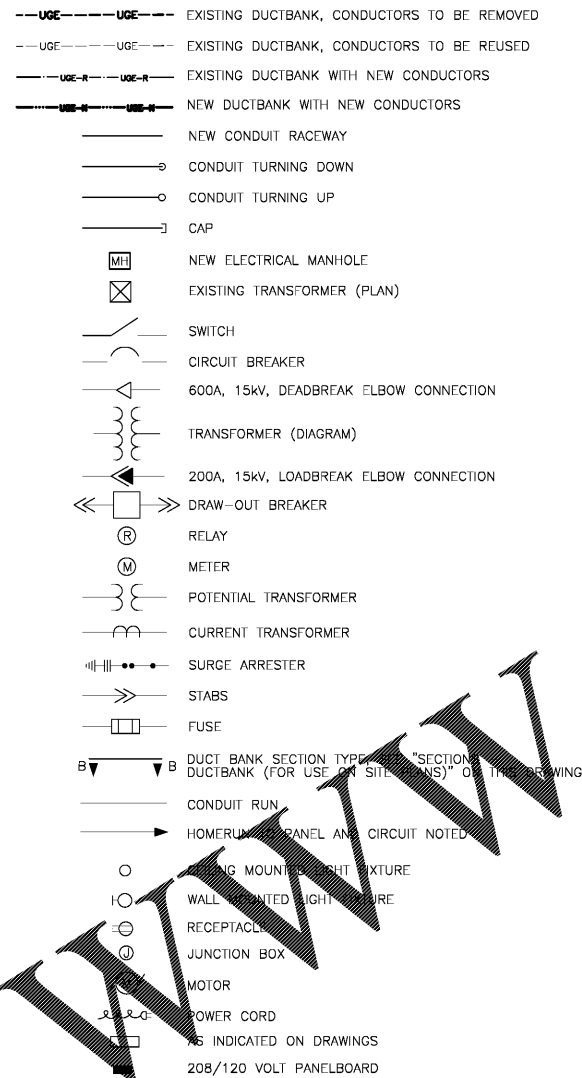


three inches = one foot
 one and one-half inches = one foot
 one inch = one foot
 three-quarters inch = one foot
 one-half inch = one foot
 one-quarter inch = one foot
 three-eighths inch = one foot
 one-eighth inch = one foot

ELECTRICAL GENERAL NOTES:

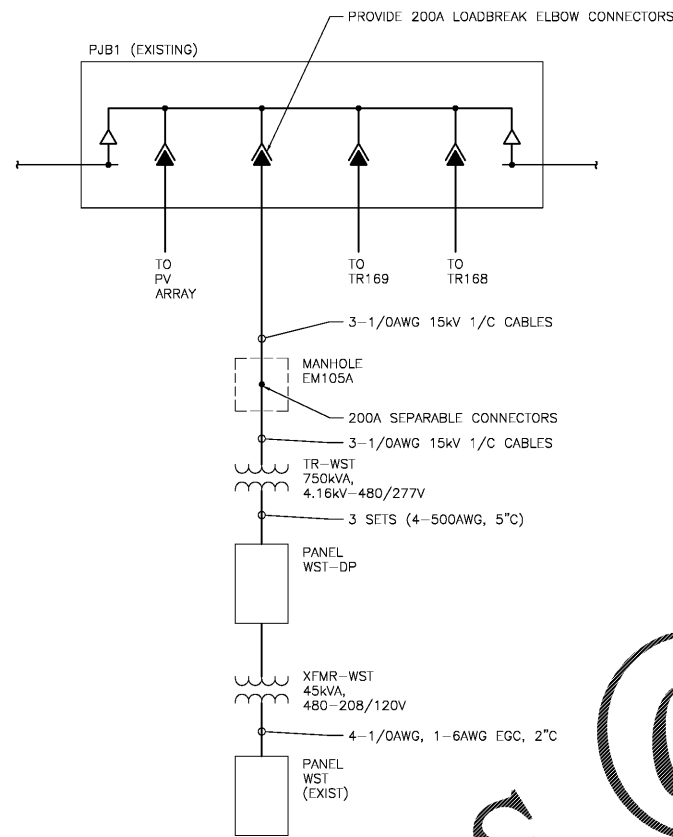
1. THE VAMC SALEM CAMPUS ELECTRICAL SYSTEM OPERATES AT 4,160V, BUT ALL EQUIPMENT INSTALLED UNDER THIS PROJECT SHALL BE RATED FOR 15,000V. PAD MOUNTED TRANSFORMERS SHALL BE EQUIPPED WITH DUAL SELECTABLE PRIMARY WINDINGS FOR OPERATION AT EITHER 4,160V OR 12,470V.
2. ELECTRICAL SERVICE TO THE WATER STORAGE TANK WILL BE UPGRADED. A PAD MOUNTED TRANSFORMER AND SERVICE SHALL BE PROVIDED FROM A SPARE POSITION IN EXISTING PEDESTAL JUNCTION BOX PJB-1 LOCATED NEAR BUILDING 168. 15,000V CONDUCTORS SHALL BE ROUTED THROUGH EXISTING DUCTBANK FROM PJB-1 TO MANHOLE EM105A. NEW DUCTBANK WILL BE REQUIRED FROM EM105A TO THE TRANSFORMER LOCATION. THE NEW ELECTRICAL SERVICE PANEL IN THE TANK SHALL RE-FEED THE EXISTING SERVICE.
3. ELECTRICAL SERVICE TO TWO WATER SERVICE BUILDINGS WILL BE UPGRADED. THESE SERVICES ARE OBTAINED DIRECTLY FROM AMERICAN ELECTRIC POWER AND SHALL BE INCREASED IN SIZE. THE CONTRACTOR SHALL BE RESPONSIBLE FOR COORDINATING THE UPGRADE OF THESE ELECTRICAL SERVICES, AND SHALL BE RESPONSIBLE FOR PAYING ALL FEES ASSOCIATED WITH THIS UPGRADE. COORDINATION WITH AEP CAN BE MADE THROUGH KEN BRANT AT 540.985.2761 OR KEBRANT@AEP.COM.

LEGEND



ABBREVIATIONS

A/AMP	AMPERE(S)	MIN	MINIMUM
ABF	AIR BLOWN FIBER	MS	MODE SWITCH (MANUAL/AUTO)
AEP	AMERICAN ELECTRIC POWER	MV	MEDIUM VOLTAGE
APCO	APPALACHIAN POWER COMPANY	MVA	MEGAVOLT-AMPERES
ART	ARTICLE	N/A	NOT APPLICABLE
AWG	AMERICAN WIRE GAUGE	NEC	NATIONAL ELECTRICAL CODE
BCSD	BARE COPPER SOFT DRAWN	NEMA	NATIONAL ELECTRICAL MANUFACTURERS' ASSOCIATION
BRKR	BREAKER	OC,O/C	ON CENTER
BLDG	BUILDING	P	POLE
C	CONDUIT	PADMT, PM	PADMOUNT
CB	CIRCUIT BREAKER	PH	PHASE
CKT	CIRCUIT	PJB	PEDESTAL JUNCTION BOX
CLR	CLEAR	PNLBD	PANELBOARD
CWP	CHILLED WATER PIPING	POFB	PULL OUT FUSE BLOCK
CMU	CONCRETE MASONRY UNIT	PP	PART PLAN
COMM	COMMUNICATION	PROT	PROTECTION
CONC	CONCRETE	PSI	POUNDS PER SQUARE INCH
CONFIG	CONFIGURATION	PU	PICKUP
CONN	CONNECTION, OR CONNECTED, AS APPLICABLE	PV	PHOTOVOLTAIC
COIR	CONTRACT OFFICERS TECHNICAL REPRESENTATIVE	PT	POLYETHYLENE TEREPHTHALATE
CPT	CONTROL POWER TRANSFORMER	RIM	RIM
CT	CURRENT TRANSFORMER	RMS	ROOT MEAN SQUARE
CU	COPPER	RSC	RIGID STEEL CONDUIT
DEMO	DEMOLITION	RTAC	REAL TIME AUTOMATION CONTROLLER
DIA	DIAMETER	RU	ROOF TOP UNIT
DIM	DIMENSION	SCHD	SCHEDULE
EGC	EQUIPMENT GROUNDING CONDUCTOR	SIG	SIGNAL
ELEC	ELECTRIC	SP	SPARE
EM	ELECTRIC MANHOLE	ST	SHORT TIME
EMT	ELECTRIC METAL TUBING	SWBD	SWITCHBOARD
EQPT	EQUIPMENT	SWGR	SWITCHGEAR
EST	ESTIMATED	SYM	SYMMETRICAL
EV	EXPLODED VIEW	SYS	SYSTEM
EW	EXPOSED WAY	TBD	TO BE DETERMINED
EXIST	EXISTING	TEL	TELEPHONE
FDR	FEEDER	TEMP	TEMPORARY
FIN	FINISH	TM	TUNNEL MANHOLE
GEC	GROUNDING ELECTRODE CONDUCTOR	TYP	TYPICAL
IND	INDUSTRIAL	UG	UNDERGROUND
GE	GOVERNMENT FURNISHED EQUIPMENT	UNK	UNKNOWN
GH	HANDHOLE	UON	UNLESS OTHERWISE NOTED
HVAC	HEATING, VENTILATING, AIR CONDITIONING	V	VOLT(S)
Hz	HERTZ	VAC	VOLTS ALTERNATING CURRENT
kcmil	THOUSAND CIRCULAR MILS	VDC	VOLTS DIRECT CURRENT
kV	KILOVOLT(S)	VT	VOLTAGE TRANSFORMER
kVA	KILOVOLT-AMPERES	W	WIRE
L	LONG	XFMR	TRANSFORMER
LA	LIGHTNING ARRESTER	Y	WYE
LT	LONG TIME		
LV	LOW VOLTAGE		
LTC	LOAD TAP CHANGER		
MCCB	MOLDED CASE CIRCUIT BREAKER		
MFR	MULTIFUNCTION RELAY		
MH	MANHOLE		

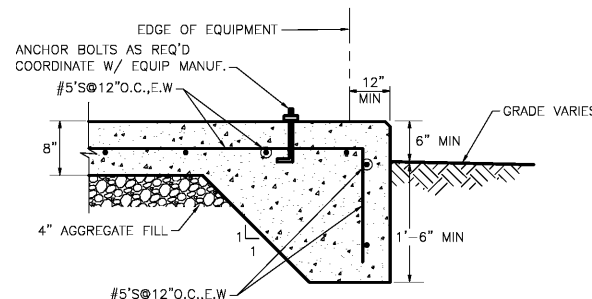


PARTIAL ONE LINE DIAGRAM
NO SCALE

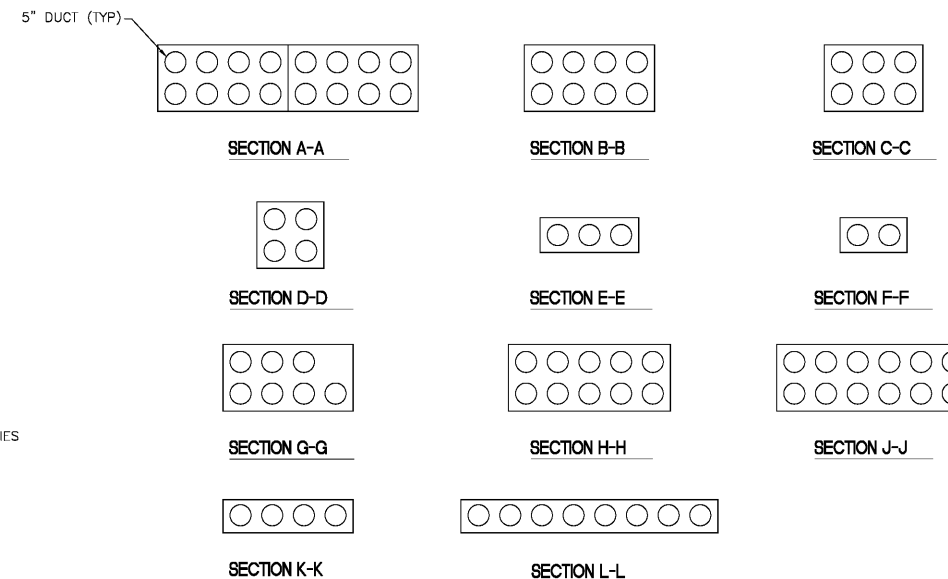
DETAIL OR SECTION INDICATION ON PLAN

SECTION LETTER
E101

DRAWING PART PLAN OR DETAIL IS LOCATED ON THIS ELECTRICAL PLAN



EQUIPMENT PAD DETAIL
NO SCALE



SECTIONS - DUCTBANK (FOR USE ON SITE PLANS)
NO SCALE

Order Plans

Revisions	Date	 Atrix, plc 102 3rd Avenue, NE PO Box 1628, Hickory, NC 28603 Phone: 828.315.9962 Fax: 828.315.9964 www.atrigroup.com	 WileyWilson 127 Natterville Drive Lynchburg, VA 24502 Phone: 434.947.1901 www.wileywilson.com	 COMMONWEALTH OF VIRGINIA STEPHEN A. BOWMAN Lic. No. 28577 4/28/2017 PROFESSIONAL ENGINEER	Approved: Energy Engineer CONSTRUCTION DOCUMENTS	Approved: Safety Manager Approved: Infection Control Officer Approved: GEMS Coordinator	Approved: Service Chief Approved: Chief of Staff Approved: Associate Director	Drawing Title E-001 ONE LINE DIAGRAM, LEGEND, ABBREVIATIONS, AND GENERAL NOTES	Project Title RENOVATE FOR WATER QUALITY	Date 04/28/2017 Project No. 658-15-101	Building Number Checked SAB Drawn RSE	Location VA MEDICAL CENTER, SALEM, VA 24153	DRAWING SET 2592 Dwg. 143 Of 155	Veterans Affairs
-----------	------	--	---	---	--	---	---	--	--	---	---	--	---	------------------