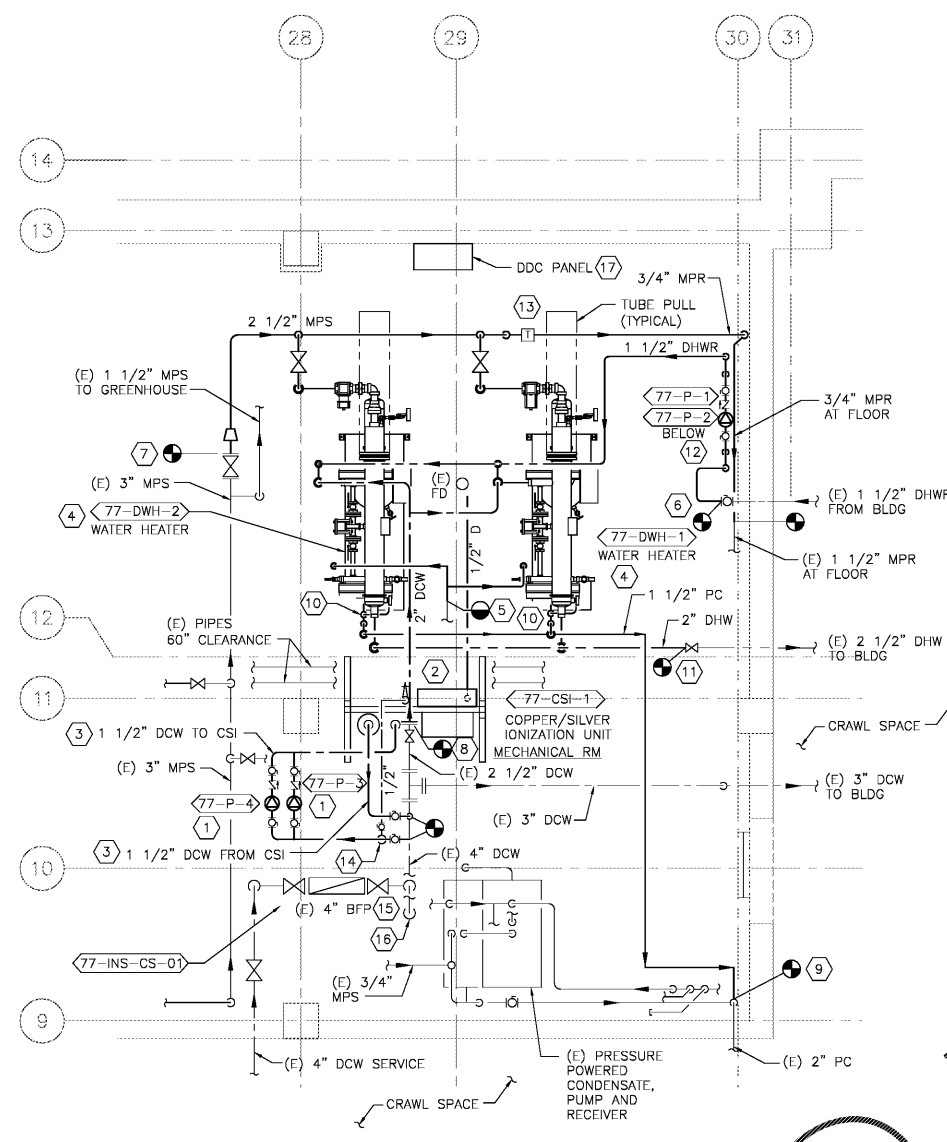
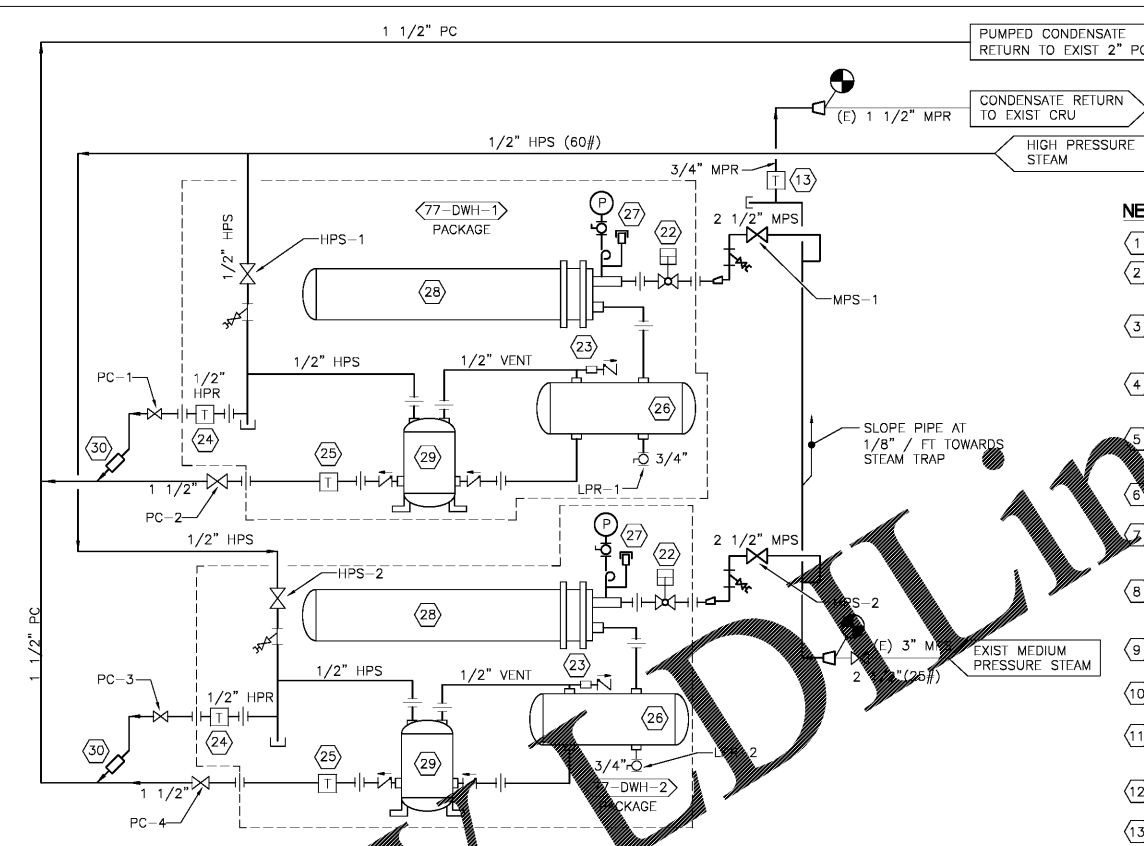


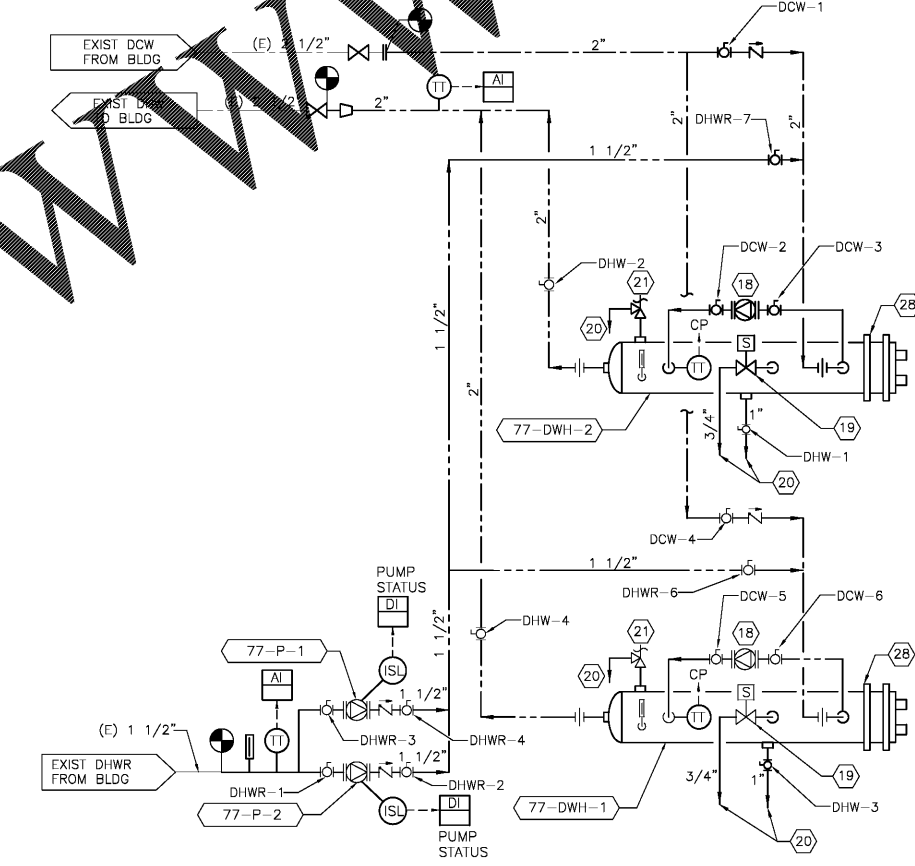
three inches = one foot  
 one and one-half inches = one foot  
 one inch = one foot  
 three-quarters inch = one foot  
 one-half inch = one foot  
 three-eighths inch = one foot  
 one-quarter inch = one foot  
 one-eighth inch = one foot



PLAN NORTH  
 1 ENLARGED SUB-BASEMENT PLUMBING NEW WORK PLAN  
 SCALE: 1/2" = 1'-0"



A BLDG 77 DOMESTIC WATER HEATERS STEAM AND CONDENSATE DIAGRAM  
 NO SCALE



B BLDG 77 DOMESTIC WATER HEATERS DOMESTIC WATER DIAGRAM  
 NO SCALE

- NEW WORK NOTES:**
- 1 CSI PUMPS, MOUNT AT 6'-9" ABOVE FINISHED FLOOR.
  - 2 CHLORINE ANALYZER, ROUTE 1/2" DRAIN FROM CHLORINE ANALYZER TO NEAREST FLOOR DRAIN. PROVIDE SHUT-OFF VALVE IN VERTICAL. CONNECT TO DDC PANEL.
  - 3 CONNECT 1 1/2" DCW PIPING TO EXIST FROM THE CSI UNIT TO EXISTING 4" DCW LINE. SEE DIAGRAM 'A' ON DRAWING PL-501.
  - 4 INSTALL WATER HEATERS ON CONCRETE PAD. INSTALL AND ENSURE THE WATER IS LEVEL. INSTALL WATER HEATER PER MANUFACTURER'S RECOMMENDATIONS.
  - 5 CONNECT 1/2" HPS TO EXISTING 1/2" HPS AND ROUTE TO THE PRESSURE POWERED CONDENSATE PUMP ON SKID. SEE DIAGRAM 'A' ON THIS DRAWING.
  - 6 CONNECT 1 1/2" DHWR TO EXISTING 1 1/2" DHWR PIPING. SEE DIAGRAM 'B' ON THIS DRAWING.
  - 7 CONNECT 2 1/2" MPS TO EXISTING 3" MPS LINE. ROUTE AND CONNECT TO WATER HEATER PER MANUFACTURER'S RECOMMENDATIONS. SEE DIAGRAM 'A' ON THIS DRAWING.
  - 8 CONNECT 2" DCW TO EXISTING 2 1/2" DCW LINE. ROUTE AND CONNECT TO WATER HEATER. SEE DIAGRAM 'B' ON THIS DRAWING.
  - 9 CONNECT 1 1/2" PC TO EXISTING 2" PC LINE. SEE DIAGRAM 'A' ON THIS DRAWING.
  - 10 CONNECT 1/2" HPR TO 1 1/2" PC PIPE. SEE DIAGRAM 'A' ON THIS DRAWING.
  - 11 CONNECT 2" DHW TO EXISTING 2 1/2" DHW AT VALVE. ROUTE AND CONNECT TO WATER HEATER. SEE DIAGRAM 'B' ON THIS DRAWING.
  - 12 HOT WATER RECIRC PUMPS, STACK PUMPS AS SHOWN ON PLANS WITH THE UPPER PUMP AT 4'-0" ABOVE FINISHED FLOOR.
  - 13 STEAM TRAP ASSEMBLY, SEE DETAIL 'F' ON DWG PL-501. CONNECT 3/4" MPR TO EXISTING 1 1/2" MPR LINE.
  - 14 1/2" DCW TO CHLORINE ANALYZER.
  - 15 INSULATE EXISTING AMES COLT 400 BACKFLOW PREVENTER AND ASSOCIATED SHUT-OFF VALVES.
  - 16 PROVIDE PRESSURE TRANSMITTER AND TEMPERATURE TRANSMITTER IN EXISTING 4" DCW MAIN AND CONNECT TO DDC PANEL.
  - 17 CONNECT TO EXISTING BUILDING AUTOMATION SYSTEM VIA EXISTING DDC PANEL LOCATED IN MECH ROOM 12R. REFER TO DRAWING PL-77-102.
  - 18 WATER HEATER CIRCULATING PUMP
  - 19 HIGH TEMPERATURE DUMP VALVE
  - 20 TO FLOOR DRAIN
  - 21 PRESSURE AND TEMPERATURE RELIEF VALVE
  - 22 STEAM CONTROL VALVE
  - 23 AIR VENT AND CHECK VALVE
  - 24 INVERTED BUCKET STEAM TRAP
  - 25 FLOAT & THERMOSTATIC STEAM TRAP
  - 26 CONDENSATE RECEIVER
  - 27 VACUUM BREAKER
  - 28 SHELL & TUBE HEAT EXCHANGER
  - 29 PRESSURE POWERED PUMP
  - 30 TRAP DIFFUSER

**Order Plans @**

Revisions Date	<b>Atrix</b> Atrix, plc 102 3rd Avenue, NE PO Box 1628, Hickory, NC 28603 Phone: 828.315.9962 Fax: 828.315.9964 www.atraxisgroup.com	<b>WileyWilson</b> WileyWilson 127 Nantowite Drive Lynchburg, VA 24502 Phone: 434.947.1901 www.wileywilson.com		Approved: Energy Engineer	Approved: Safety Manager	Approved: Service Chief	Drawing Title PL-77-401 BLDG 77 ENLARGED SUB-BASEMENT PLUMBING PLAN NEW WORK	Project Title RENOVATE FOR WATER QUALITY	Date 04/28/2017	Veterans Affairs	
				Approved: Infection Control Officer	Approved: Chief of Staff	Approved: Chief of Facility Management Svcs.	Project No. 658-15-101				
				<b>CONSTRUCTION DOCUMENTS</b>	Approved: GEMS Coordinator	Approved: Associate Director	Approved: Medical Center Director	Building Number 77	Checked MUG	Drawn JFC	DRAWING SET 2592
							Approved: Medical Center Director	Location VA MEDICAL CENTER, SALEM, VA 24153	Dwg. 101 Of 155		