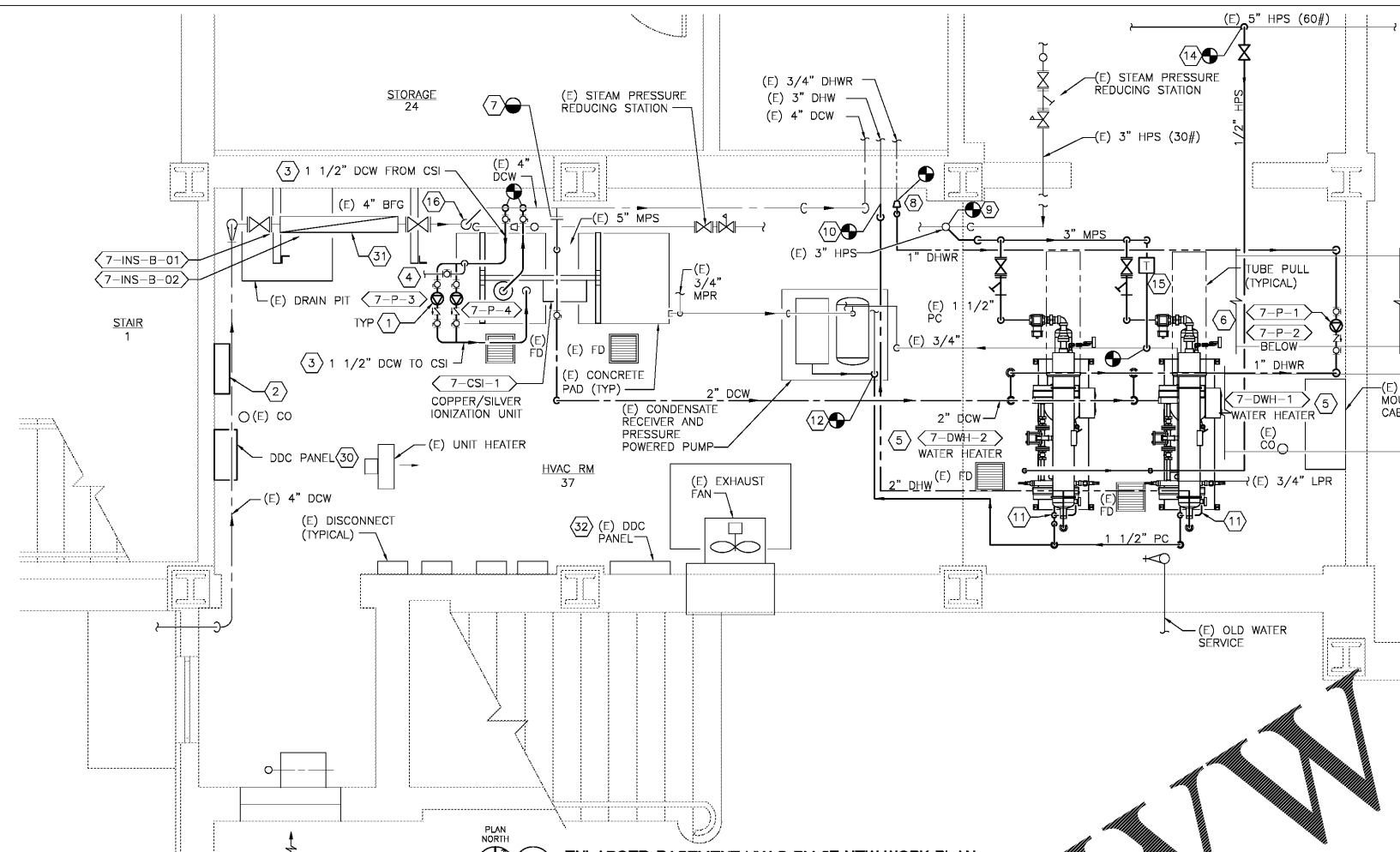
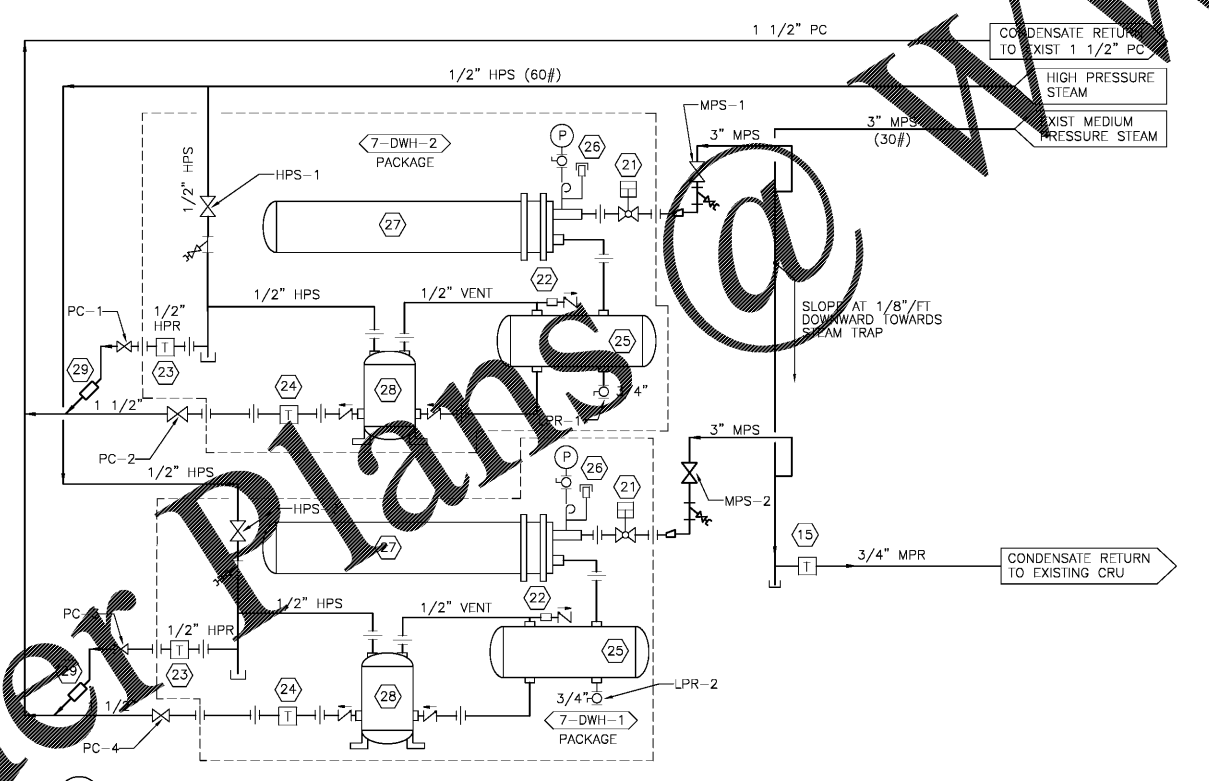


three inches = one foot
 one and one-half inches = one foot
 one inch = one foot
 three-quarters inch = one foot
 one-half inch = one foot
 three-eighths inch = one foot
 one-quarter inch = one foot
 one-eighth inch = one foot

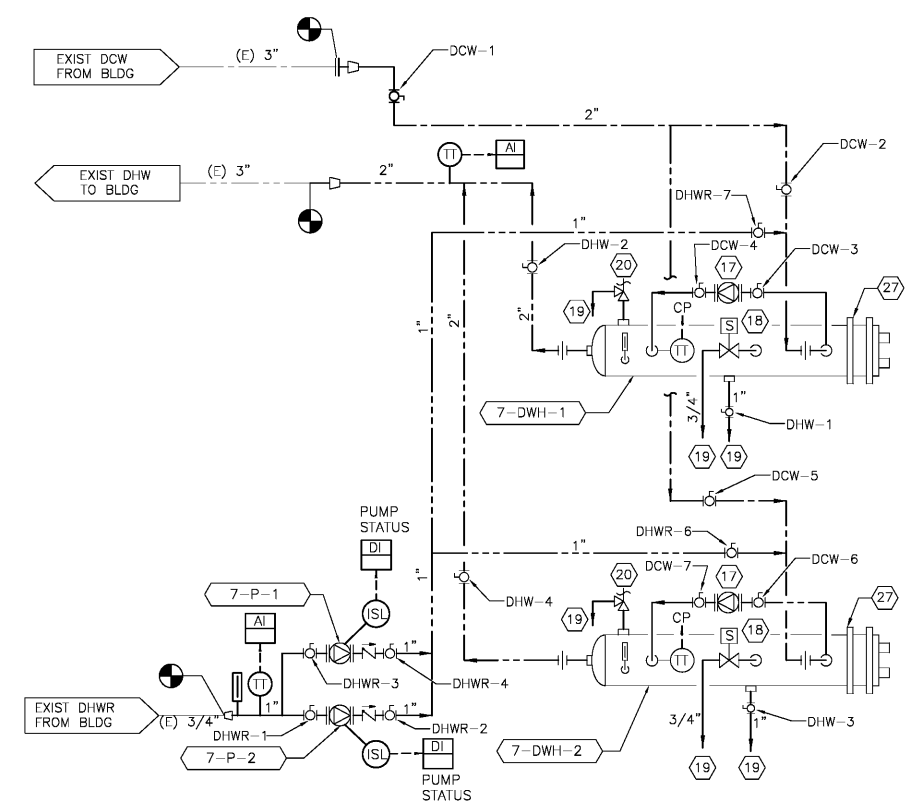


1 ENLARGED BASEMENT HVAC RM 37 NEW WORK PLAN
 SCALE: 1/2" = 1'-0"




A BLDG 7 DOMESTIC WATER HEATERS STEAM AND CONDENSATE DIAGRAM
 NO SCALE

- CONSTRUCTION NOTES:**
- 1 CSI PUMPS, MOUNT AT 5'-0" ABOVE FINISHED FLOOR.
 - 2 CHLORINE ANALYZER, ROUTE 1/2" DRAIN FROM CHLORINE ANALYZER TO NEAREST FLOOR DRAIN. PROVIDE BALL VALVE IN VERTICAL ON 1/2" DCW. CONNECT TO DDC PANEL.
 - 3 CONNECT 1 1/2" DCW PIPING TO AND FROM THE CSI UNIT TO EXISTING 4" DCW LINE, SEE DIAGRAM 'A' ON DRAWING PL-501.
 - 4 1/2" DCW TO CHLORINE ANALYZER.
 - 5 INSTALL WATER HEATER ON CONCRETE PAD. INSTALL TO ENSURE THE HEATER IS LEVEL. INSTALL HEATER PER MANUFACTURER'S RECOMMENDATIONS.
 - 6 HOT WATER RECIRC PUMPS, STACK PUMPS AS SHOWN ON PLANS WITH THE UPPER PUMP AT 4'-0" ABOVE FINISHED FLOOR.
 - 7 CONNECT TO 2" DCW TO EXISTING 3" DCW PIPE. ROUTE AND CONNECT TO WATER HEATER. SEE DIAGRAM 'A' ON THIS DRAWING.
 - 8 CONNECT 1" DHWR TO EXISTING 3/4" DHWR. SEE DIAGRAM 'B' ON THIS DRAWING.
 - 9 CONNECT 3" MPS TO EXISTING 3" MPS LINE. ROUTE AND CONNECT TO WATER HEATER PER MANUFACTURER'S RECOMMENDATIONS. SEE DIAGRAM 'A' ON THIS DRAWING.
 - 10 CONNECT 2" DHW TO EXISTING 3" DHW LINE. ROUTE AND CONNECT TO WATER HEATER. SEE DIAGRAM 'B' ON THIS DRAWING.
 - 11 CONNECT 1/2" HPR TO 2" PC PIPE. SEE DIAGRAM 'A' ON THIS DRAWING.
 - 12 CONNECT 1 1/2" PC TO EXISTING 1 1/2" PC AT RECEIVER TANK.
 - 13 ROUTE 3/4" MPR FROM END-OF-MAIN TO CONDENSATE PIPING AT RECEIVER TANK.
 - 14 CONNECT 1/2" HPS TO EXISTING 5" HPS MAIN AND ROUTE TO THE PRESSURE POWERED CONDENSATE PUMP ON SKID. SEE DIAGRAM 'A' ON THIS DRAWING.
 - 15 STEAM TRAP ASSEMBLY, SEE DETAIL 'F' ON DWG PL-501.
 - 16 PROVIDE PRESSURE TRANSMITTER AND TEMPERATURE TRANSMITTER ON EXISTING 4" DCW MAIN. CONNECT TO DDC PANEL.
 - 17 WATER HEATER CIRCULATING PUMP.
 - 18 HIGH TEMPERATURE DUMP VALVE.
 - 19 TO FLOOR DRAIN.
 - 20 PRESSURE AND TEMPERATURE RELIEF VALVE.
 - 21 STEAM CONTROL VALVE.
 - 22 AIR VALVE AND CHECK VALVE.
 - 23 INVERTED BUCKET STEAM TRAP.
 - 24 THERMOSTATIC STEAM TRAP.
 - 25 CONDENSATE RECEIVER.
 - 26 VACUUM BREAKER.
 - 27 SHELL & TUBE HEAT EXCHANGER.
 - 28 PRESSURE POWERED PUMP.
 - 29 TRAP DIFFUSER.
 - 30 CONNECT TO EXISTING BUILDING AUTOMATION SYSTEM VIA EXISTING DDC PANEL IN THE SAME ROOM.
 - 31 INSULATE EXISTING 4" WILKINS/ZURN MODEL 975RP BACKFLOW PREVENTER AND ASSOCIATED STRAINER AND SHUT-OFF VALVES. INSULATE EXISTING 2" WILKINS/ZURN MODEL 975RP BACKFLOW PREVENTER AND ASSOCIATED STRAINER AND SHUT-OFF VALVES.
 - 32 CONNECT NEW DDC PANEL TO EXISTING BAS NETWORK VIA EXISTING SIEMENS APOGEE BAS. PANEL CONTAINS MEC CONTROLLER.
 - 33 EXISTING DUCTWORK WHICH RUNS ACROSS THE MECHANICAL ROOM. 86" BOTTOM OF DUCT AFF.



B BLDG 7 DOMESTIC WATER HEATERS DOMESTIC WATER DIAGRAM
 NO SCALE

Revisions	Date

<p>Atriax, pllc 102 3rd Avenue, NE PO Box 1628, Hickory, NC 28603 Phone: 828.315.9962 Fax: 828.315.9964 www.atriaxgroup.com</p> <p>Wiley/Wilson 127 Natterville Drive Lynchburg, VA 24502 Phone: 434.947.1901 www.wileywilson.com</p>	<p>APPROVED BY: </p>	<p>Approved: Energy Engineer</p> <p>CONSTRUCTION DOCUMENTS</p>	<p>Approved: Safety Manager</p> <p>Approved: Infection Control Officer</p> <p>Approved: GEMS Coordinator</p>	<p>Approved: Service Chief</p> <p>Approved: Chief of Staff</p> <p>Approved: Associate Director</p>	<p>Drawing Title PL-7-401 BLDG 7 ENLARGED BASEMENT PLUMBING PLAN NEW WORK</p> <p>Approved: Chief of Facility Management Svc.</p> <p>Approved: Medical Center Director</p>	<p>Project Title RENOVATE FOR WATER QUALITY</p> <p>Building Number 7</p> <p>Location VA MEDICAL CENTER, SALEM, VA 24153</p>	<p>Date 04/28/2017</p> <p>Project No. 658-15-101</p> <p>DRAWING SET 2592</p> <p>Dwg. 86 Of 155</p>
---	--	---	--	--	---	--	--

Veterans Affairs