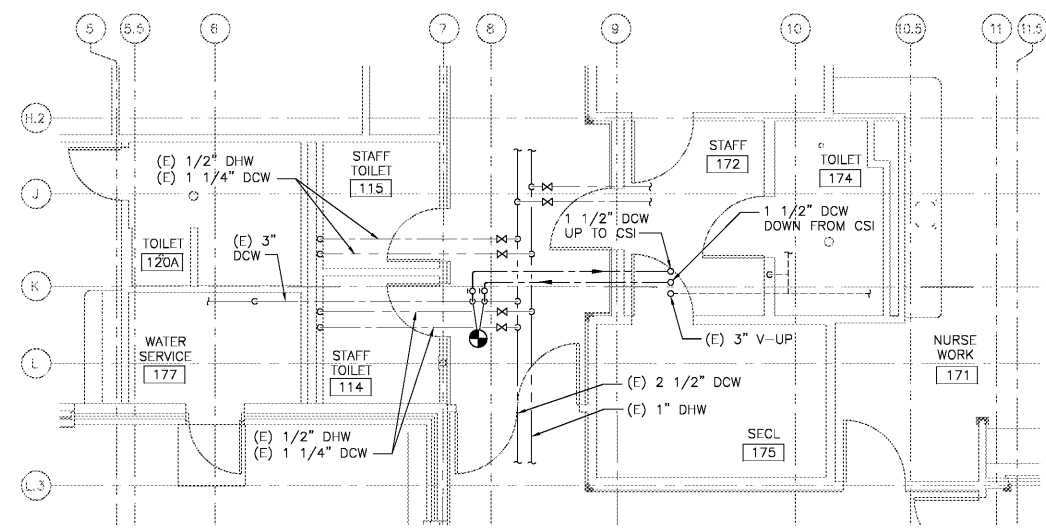
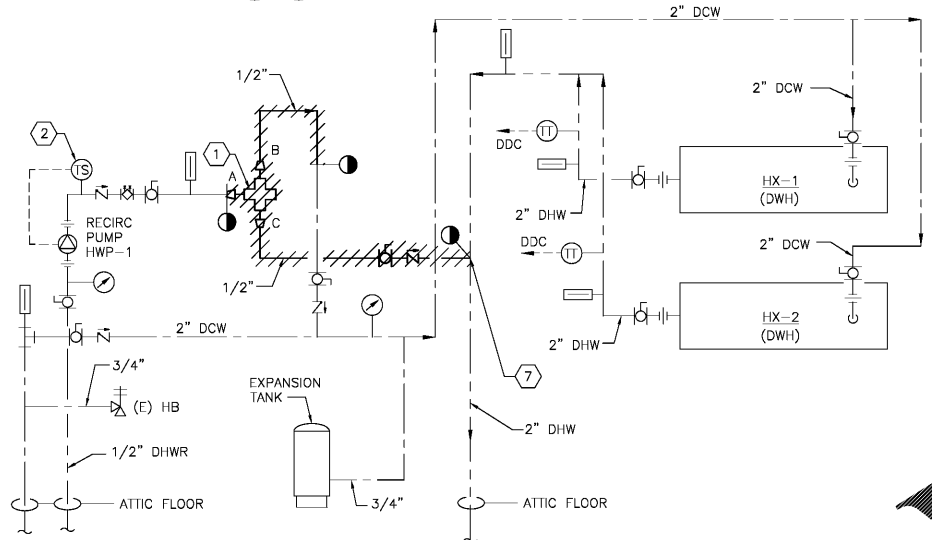


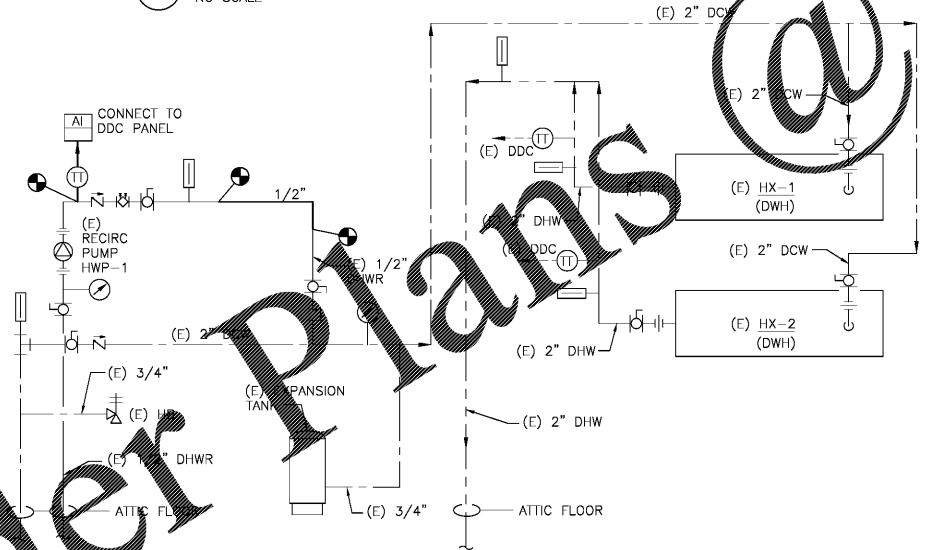
three inches = one foot
 one and one-half inches = one foot
 one inch = one foot
 three-quarters inch = one foot
 one-half inch = one foot
 three-quarters inch = one foot
 one-half inch = one foot
 three-eighths inch = one foot
 one-quarter inch = one foot
 one-eighth inch = one foot



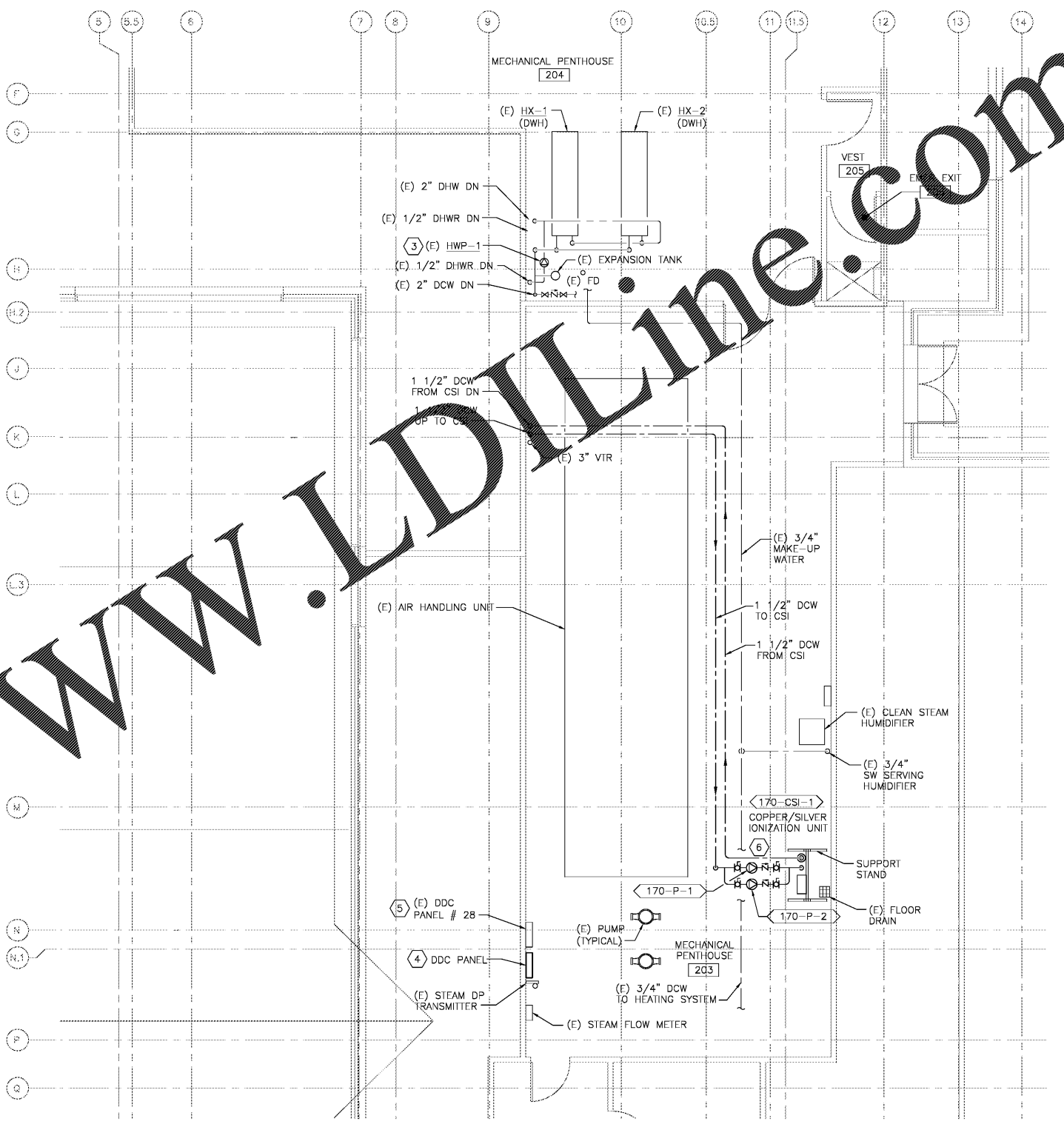
1 ENLARGED PLUMBING FLOOR PLAN
 SCALE: 1/4" = 1'-0"



A DOMESTIC HW RECIRC SYSTEM DEMOLITION DIAGRAM
 NO SCALE



B DOMESTIC HW RECIRC SYSTEM NEW WORK DIAGRAM
 NO SCALE



2 ENLARGED PLUMBING PENTHOUSE PLAN
 SCALE: 1/4" = 1'-0"

DEMOLITION AND NEW WORK NOTES:

- 1 REMOVE THERMOSTATIC MIXING VALVE AND RECONNECT 1/2" DHWR PIPE.
- 2 REMOVE AQUASTAT AND CONTROL WIRING BACK TO TO PUMP. REWIRE PUMP TO RUN CONTINUOUSLY.
- 3 PROVIDE DEMOLITION AND NEW WORK PER DIAGRAM A & B ON THIS SHEET.
- 4 CONNECT TO EXISTING BUILDING AUTOMATION SYSTEM VIA EXISTING DDC PANEL # 28.
- 5 CONNECT NEW DDC PANEL TO EXISTING BAS NETWORK VIA EXISTING SIEMENS APOGEE BAS. PANEL CONTAINS (2) PXX-485.3, 1XS1.12F4 AND TXM1.
- 6 SEE DIAGRAM "A" ON DRAWING PL-501.
- 7 REPLACE TEE AND INSULATE WITH FIBERGLASS INSULATION.

Order Plans @

WWW.LDLINE.COM

Revisions	Date

Atrix
 Atrix, pllc
 102 3rd Avenue, NE
 PO Box 1628,
 Hickory, NC 28603
 Phone: 828.315.9962
 Fax: 828.315.9964
 www.atrrixgroup.com

Wiley Wilson
 Wiley Wilson
 127 Nantowite Drive
 Lynchburg, VA 24502
 Phone: 434.947.1901
 www.wileywilson.com



Approved: Energy Engineer	Approved: Safety Manager	Approved: Service Chief
	Approved: Infection Control Officer	Approved: Chief of Staff
	Approved: GEMS Coordinator	Approved: Associate Director

Approved: Energy Engineer	Approved: Safety Manager	Approved: Service Chief
	Approved: Infection Control Officer	Approved: Chief of Staff
	Approved: GEMS Coordinator	Approved: Associate Director

Drawing Title PL-170-401 BLDG 170 ENLARGED PLUMBING PLANS NEW WORK	Project Title RENOVATE FOR WATER QUALITY	Date 04/28/2017
Approved: Chief of Facility Management Svc.	Building Number 170	Project No. 658-15-101
Approved: Medical Center Director	Checked MJG	Drawing Set 2592
	Drawn JFC	Dwg. 121 Of 155
	Location VA MEDICAL CENTER, SALEM, VA 24153	

Drawing Title PL-170-401 BLDG 170 ENLARGED PLUMBING PLANS NEW WORK	Project Title RENOVATE FOR WATER QUALITY	Date 04/28/2017
Approved: Chief of Facility Management Svc.	Building Number 170	Project No. 658-15-101
Approved: Medical Center Director	Checked MJG	Drawing Set 2592
	Drawn JFC	Dwg. 121 Of 155
	Location VA MEDICAL CENTER, SALEM, VA 24153	

Veterans Affairs