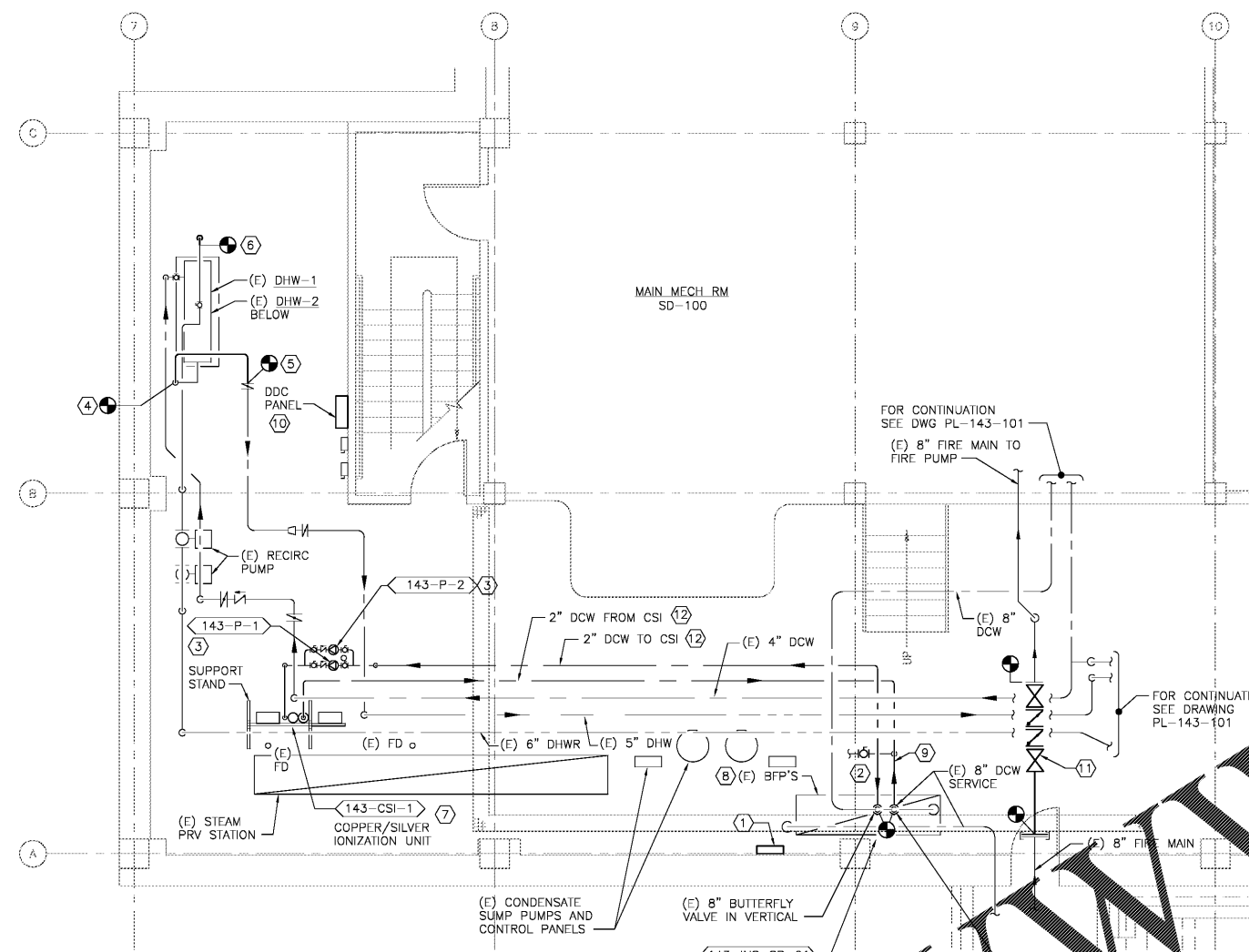
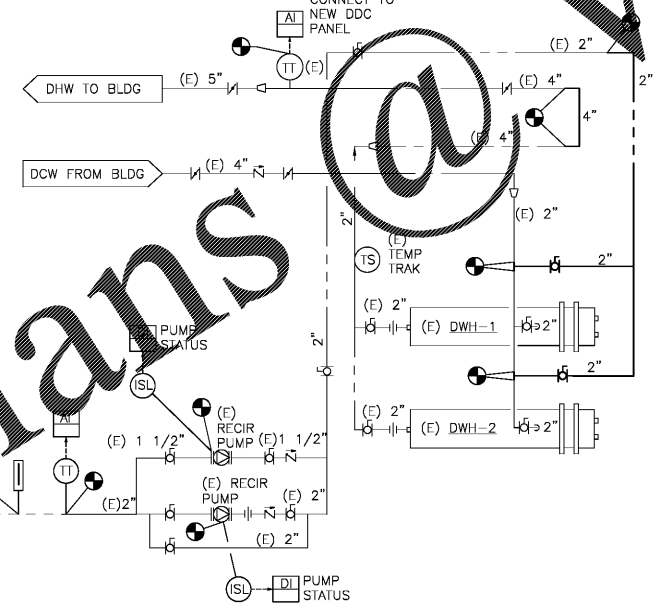


three inches = one foot
 one and one-half inches = one foot
 one inch = one foot
 three-quarters inch = one foot
 one-half inch = one foot
 three-eighths inch = one foot
 one-quarter inch = one foot
 one-eighth inch = one foot



1 ENLARGED SUB-BASEMENT PLUMBING PLAN
 SCALE: 1/4" = 1'-0"



A BLDG 143 DOMESTIC WATER HEATERS DOMESTIC WATER DIAGRAM
 NO SCALE

- NEW WORK NOTES:**
- CHLORINE ANALYZER, DISCHARGE INTO TRENCH DRAIN. CONNECT TO DDC SYSTEM. PROVIDE BALL VALVE IN VERTICAL.
 - 1/2" DCW TO CHLORINE ANALYZER.
 - CSI PUMPS, MOUNT AT 7'-0" ABOVE FINISHED FLOOR.
 - CONNECT 4" DHW TO EXISTING 4" DHW LINE FROM THE DOMESTIC WATER HEATERS. SEE DIAGRAM 'A' ON THIS DRAWING.
 - CONNECT 4" DHW TO EXISTING 4" DHW LINE UPSTREAM OF THE EXISTING BUTTERFLY VALVE, SEE DIAGRAM 'A' ON THIS DRAWING.
 - CONNECT 2" DHWR TO EXISTING 2" DHW SERVING THE DOMESTIC WATER HEATERS (DWH-1 AND DWH-2). SEE DIAGRAM 'A' ON THIS DRAWING.
 - SEE DIAGRAM 'B' ON DRAWING PL-501.
 - INSULATE TWO EXISTING W 90° 1/2 INCH BACKFLOW PREVENTERS AND ASSOCIATED STRAINER AND SHUT-OFF VALVES. INSULATE 4 FEET AND 90° ELBOW SERVING (E) 4" DCW AT FLOOR.
 - PROVIDE PRESSURE TRANSMITTER AND TEMPERATURE TRANSMITTER IN DDC AND CONNECT TO DDC PANEL.
 - CONNECT EXISTING BUILDING AUTOMATION SYSTEM VIA EXISTING DDC PANEL LOCATED IN ROOM MECH BE-130A. SEE DWG PL-143-104.
 - PROVIDE 8" DOUBLE CHECK VALVE BACKFLOW PREVENTER.
 - ROUTE 2" DCW BELOW EXISTING DCW AND DHW PIPING.

Order Plans @ www.LDILine.com

Revisions	Date

Atriax
 Atriax, plc
 102 3rd Avenue, NE
 PO Box 1628,
 Hickory, NC 28603
 Phone: 828.315.9962
 Fax: 828.315.9964
 www.atriaxgroup.com

Wiley/Wilson
 Wiley/Wilson
 127 Natterville Drive
 Lynchburg, VA 24502
 Phone: 434.947.1901
 www.wileywilson.com



Approved: Energy Engineer	Approved: Safety Manager	Approved: Service Chief
	Approved: Infection Control Officer	Approved: Chief of Staff
	Approved: GEMS Coordinator	Approved: Associate Director
CONSTRUCTION DOCUMENTS		

Approved: Chief of Facility Management Svc.	Approved: Medical Center Director
---	-----------------------------------

Drawing Title PL-143-401 BLDG 143 ENLARGED SUB-BASEMENT PLUMBING PLAN NEW WORK		Project Title RENOVATE FOR WATER QUALITY		Date 04/28/2017
Approved: Chief of Facility Management Svc.		Building Number 143	Checked MJG	Drawn JFC
Approved: Medical Center Director		Location VA MEDICAL CENTER, SALEM, VA 24153	DRAWING SET 2592 Dwg. 119 Of 155	

Veterans Affairs