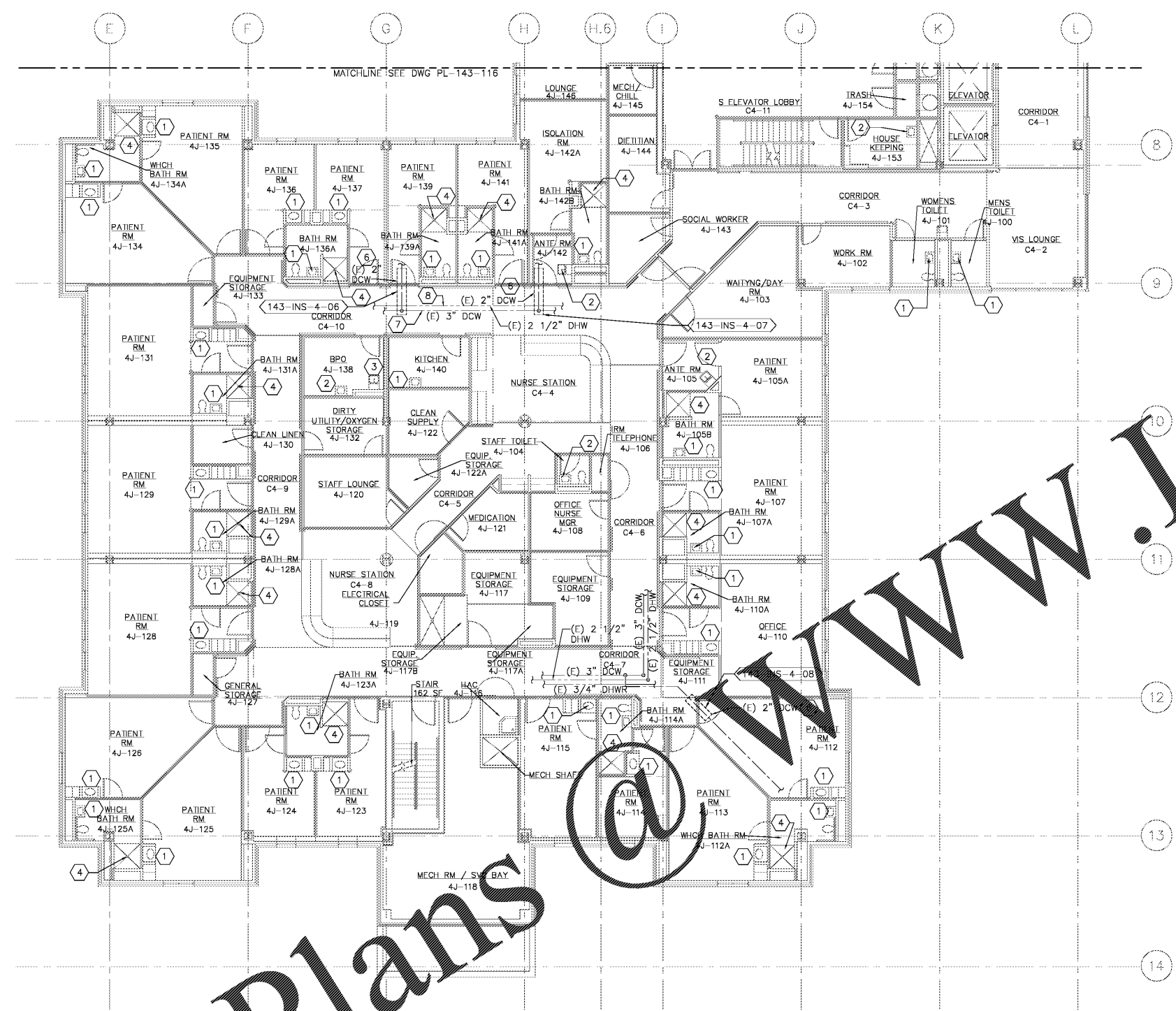
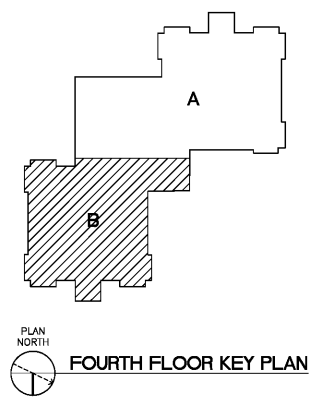


CONSTRUCTION NOTES:

- 1 PROVIDE THERMOSTATIC MIXING VALVE BELOW SINK/LAVATORY PER DETAIL C DRAWING PL-501.
- 2 PROVIDE THERMOSTATIC MIXING VALVE IN CEILING ABOVE LAV PER DETAIL D DRAWING PL-501.
- 3 PROVIDE THERMOSTATIC MIXING VALVE IN CEILING ABOVE CLINIC SINK FAUCET. MIXING VALVE SHALL SERVE CLINIC SINK FAUCET AND BEDPAN WASHER FOOT PEDAL PER DETAIL D DRAWING PL-501.
- 4 REMOVE SHOWER VALVE AND PROVIDE ASSE 1015 THERMOSTATIC AND PRESSURE BALANCING COMBINATION SHOWER VALVE. MOVE AND REPLACE PORTION OF TILE WALL TO ALLOW INSTALLATION OF NEW SHOWER VALVE.
- 5 REMOVE FAUCET AERATOR AND PROVIDE LAMINAR FLOW OUTLET.
- 6 INSULATE PIPING WITH FLEXIBLE ELASTOMERIC INSULATION.
- 7 PROVIDE TEMPERATURE SENSOR IN DHW AND CONNECT TO DDC PANEL LOCATED IN SVC BAY 3J-118 SEE DWG. PL-143-115.
- 8 PROVIDE TEMPERATURE SENSOR IN DHW AND CONNECT TO DDC PANEL LOCATED IN SVC BAY 3J-118. SEE DWG. PL-143-115.



PLAN NORTH
 1 **FOURTH FLOOR PLUMBING PLAN - AREA 'B'**
 SCALE: 1/8" = 1'-0"



three inches = one foot
 one and one-half inches = one foot
 one inch = one foot
 three-quarters inch = one foot
 one-half inch = one foot
 three-eighths inch = one foot
 one-quarter inch = one foot
 one-eighth inch = one foot

Order Plans @ www.LDILine.com

Revisions	Date

Atrix
 Atrix, plc
 102 3rd Avenue, NE
 PO Box 1628,
 Hickory, NC 28603
 Phone: 828.315.9962
 Fax: 828.315.9964
 www.atrigroup.com

WileyWilson
 WileyWilson
 127 Nantux Drive
 Lynchburg, VA 24502
 Phone: 434.947.1901
 www.wileywilson.com



Approved: Energy Engineer
 Approved: Safety Manager
 Approved: Infection Control Officer
 Approved: GEMS Coordinator

CONSTRUCTION DOCUMENTS

Approved: Service Chief
 Approved: Chief of Staff
 Approved: Associate Director

Drawing Title
 PL-143-117
 BLDG 143 FOURTH FLOOR PLUMBING PLAN
 AREA 'B' NEW WORK

Project Title
RENOVATE FOR WATER QUALITY

Approved: Chief of Facility Management Svc.
 Approved: Medical Center Director

Date
 04/28/2017

Project No.
 658-15-101

Building Number
 143

Checked
 MJG

Drawn
 JFC

Location
 VA MEDICAL CENTER, SALEM, VA 24153

DRAWING SET
 2592

Dwg. 118 Of 155

Veterans Affairs