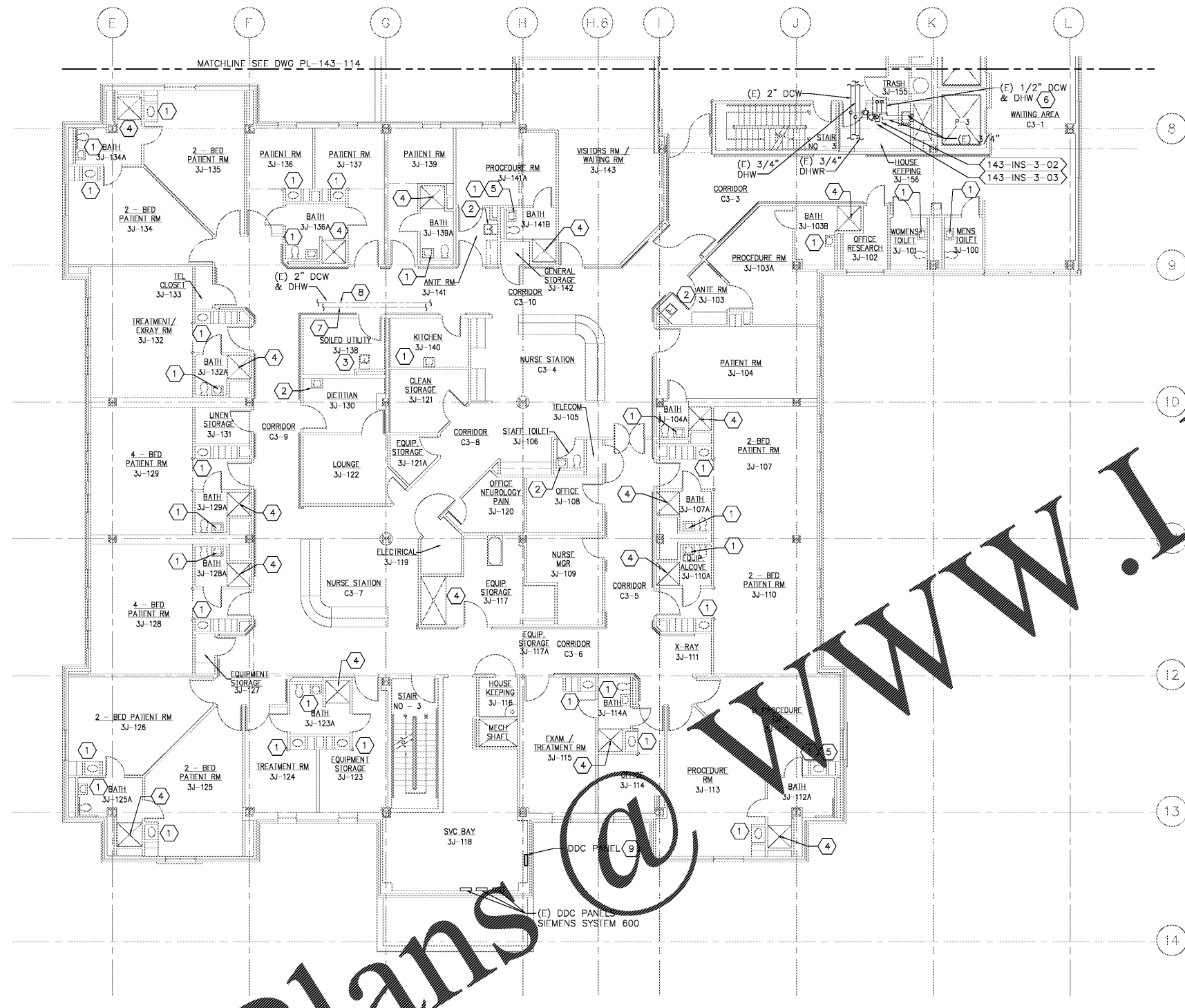
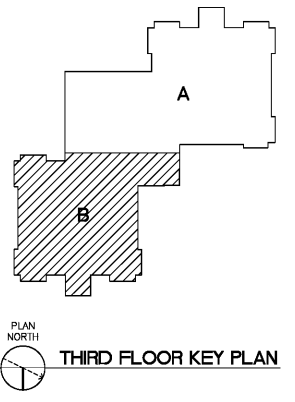


three inches = one foot  
 one and one-half inches = one foot  
 one inch = one foot  
 three-quarters inch = one foot  
 one-half inch = one foot  
 one-quarter inch = one foot  
 three-eighths inch = one foot  
 one-eighth inch = one foot  
 one-sixteenth inch = one foot



- CONSTRUCTION NOTES:**
- 1 PROVIDE THERMOSTATIC MIXING VALVE BELOW SINK/LAVATORY PER DETAIL 'C' ON DRAWING PL-501.
  - 2 PROVIDE THERMOSTATIC MIXING VALVE IN CEILING ABOVE LAV PER DETAIL 'D' ON DRAWING PL-501.
  - 3 PROVIDE THERMOSTATIC MIXING VALVE IN CEILING ABOVE CLINIC SINK FAUCET. MIXING VALVE SHALL SERVE CLINIC SINK FAUCET AND BEDPAN WASHER FOOT PEDAL PER DETAIL 'D' ON DRAWING PL-501.
  - 4 REMOVE SHOWER VALVE AND PROVIDE ASSE 1016 THERMOSTATIC AND PRESSURE BALANCING COMBINATION SHOWER VALVE. REMOVE AND REPLACE PORTION OF TILE TO ALLOW INSTALLATION OF NEW SHOWER VALVE.
  - 5 REMOVE FAUCET AERATOR AND PROVIDE LAMINAR FLOW OUTLET.
  - 6 INSULATE PIPING WITH FLEXIBLE ELASTOMERIC INSULATION.
  - 7 PROVIDE TEMPERATURE SENSOR IN DOW AND CONNECT TO DDC PANEL LOCATED IN SVC BAY 3J-118 THIS DWG.
  - 8 PROVIDE TEMPERATURE SENSOR IN DHW AND CONNECT TO DDC PANEL LOCATED IN SVC BAY 3J-118 THIS DWG. CONNECT TO EXISTING BUILDING AUTOMATION SYSTEM VIA EXISTING DDC PANEL IN THE SAME ROOM.

**1 THIRD FLOOR PLUMBING PLAN - AREA 'B'**  
 SCALE: 1/8" = 1'-0"



Order Plans

<b>CONSTRUCTION DOCUMENTS</b>	Approved: Energy Engineer	Approved: Safety Manager	Approved: Service Chief	Drawing Title PL-143-115 BLDG 143 THIRD FLOOR PLUMBING PLAN AREA 'B' NEW WORK	Project Title RENOVATE FOR WATER QUALITY	Date 04/28/2017
		Approved: Infection Control Officer	Approved: Chief of Staff	Approved: Chief of Facility Management Svcs.	Building Number 143	Project No. 658-15-101
		Approved: GEMS Coordinator	Approved: Associate Director	Approved: Medical Center Director	Checked MJG	Drawn JFC
					Location VA MEDICAL CENTER, SALEM, VA 24153	DRAWING SET 2592 Dwg. 116 Of 155

Revisions	Date

Atrix, plc  
102 3rd Avenue, NE  
PO Box 1628,  
Hickory, NC 28603  
Phone: 828.315.9962  
Fax: 828.315.9964  
www.atrigroup.com

WileyWilson  
127 Nationwide Drive  
Lynchburg, VA 24502  
Phone: 434.947.1901  
www.wileywilson.com

Michael W. Gehl  
Professional Engineer  
Lic. No. 24298  
4/22/2017

Veterans Affairs