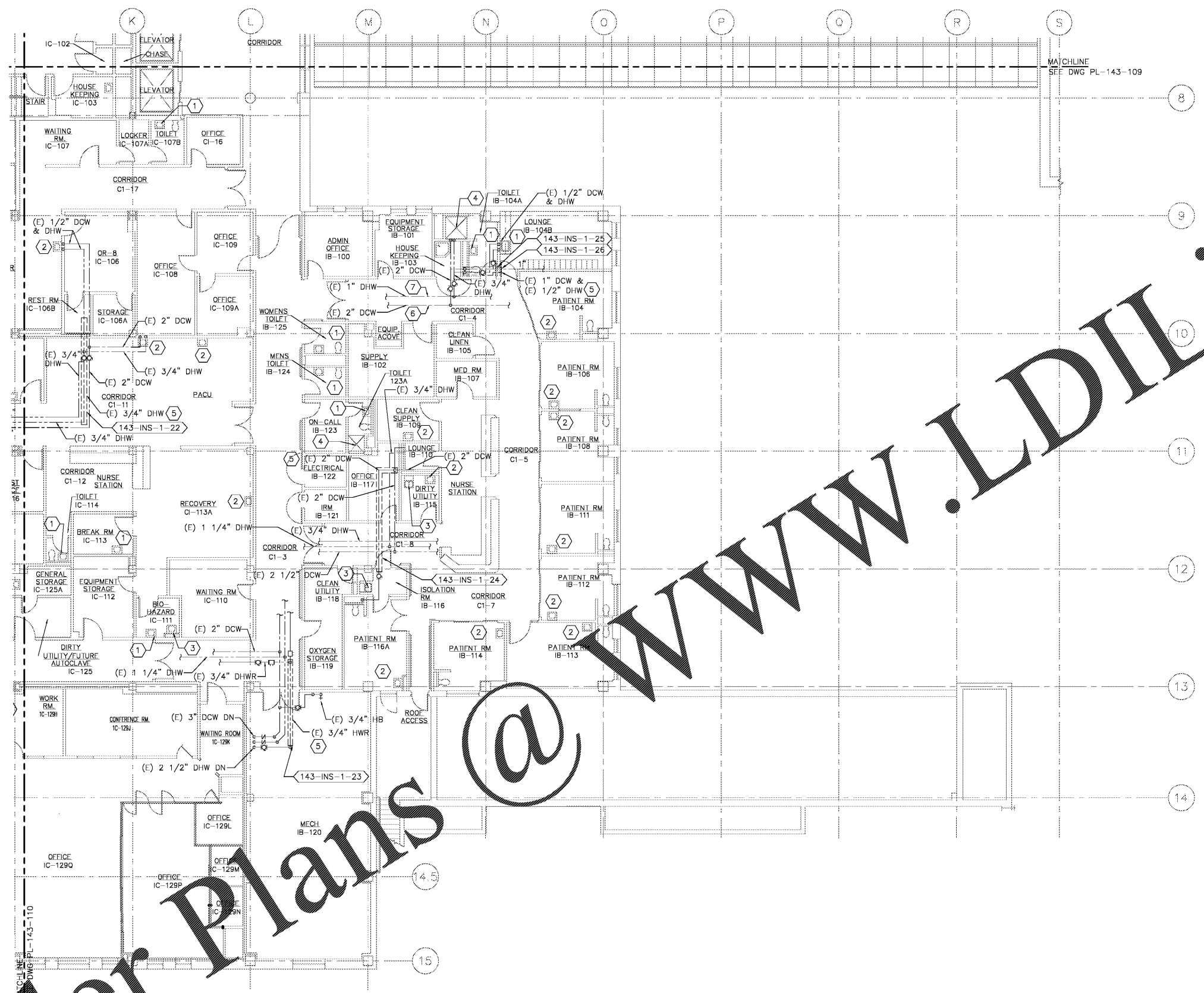


three inches = one foot
 one and one-half inches = one foot
 one inch = one foot
 three-quarters inch = one foot
 one-half inch = one foot
 three-eighths inch = one foot
 one-quarter inch = one foot
 one-eighth inch = one foot

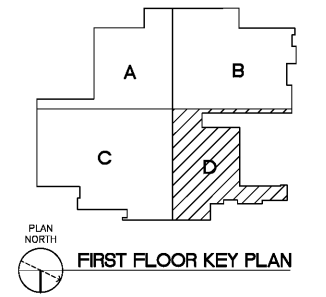


- CONSTRUCTION NOTES:**
- 1 PROVIDE THERMOSTATIC MIXING VALVE BELOW SINK/LAVATORY PER DETAIL 'C' ON DRAWING PL-501.
 - 2 PROVIDE THERMOSTATIC MIXING VALVE IN CEILING ABOVE LAV PER DETAIL 'D' ON DRAWING PL-501.
 - 3 PROVIDE THERMOSTATIC MIXING VALVE IN CEILING ABOVE CLINIC SINK FAUCET. MIXING VALVE SHALL SERVE CLINIC SINK FAUCET AND BEDPAN WASHER FOOT PEDAL PER DETAIL 'D' ON DRAWING PL-501.
 - 4 REMOVE SHOWER VALVE AND PROVIDE AS 10' THERMOSTATIC AND PRESSURE-BALANCING COMBINATION SHOWER VALVE. REMOVE AND REPLACE PORTION OF TILE WALL TO ALLOW INSTALLATION OF NEW SHOWER VALVE.
 - 5 INSULATE PIPING WITH FLEXIBLE ELASTOMER INSULATION.
 - 6 PROVIDE TEMPERATURE SENSOR IN DCW AND CONNECT TO DDC PANEL LOCATED IN SUB-BASEMENT MECH RM. REFER TO DWG. PL-143-109.
 - 7 PROVIDE TEMPERATURE SENSOR IN DHW AND CONNECT TO DDC PANEL LOCATED IN SUB-BASEMENT MECH RM. REFER TO DWG. PL-143-109.

WWW.LDILLING.COM

Order Plans @

1 PLAN NORTH
FIRST FLOOR PLUMBING PLAN - AREA 'D'
 SCALE: 1/8" = 1'-0"



Revisions Date	 Atrix, LLC 102 3rd Avenue, NE PO Box 1628, Hickory, NC 28603 Phone: 828.315.9962 Fax: 828.315.9964 www.atrifaxgroup.com	 Wiley Wilson 127 Natterville Drive Lynchburg, VA 24502 Phone: 434.947.1901 www.wileywilson.com		Approved: Energy Engineer	Approved: Safety Manager	Approved: Service Chief	Drawing Title PL-143-111 BLDG 143 FIRST FLOOR PLUMBING PLAN AREA 'D' NEW WORK	Project Title RENOVATE FOR WATER QUALITY	Date 04/28/2017	Veterans Affairs
				CONSTRUCTION DOCUMENTS	Approved: Infection Control Officer	Approved: Chief of Staff	Approved: Chief of Facility Management Svcs.	Project No. 658-15-101	Building Number 143	
				Approved: GEMS Coordinator	Approved: Associate Director	Approved: Medical Center Director	Location VA MEDICAL CENTER, SALEM, VA 24153			